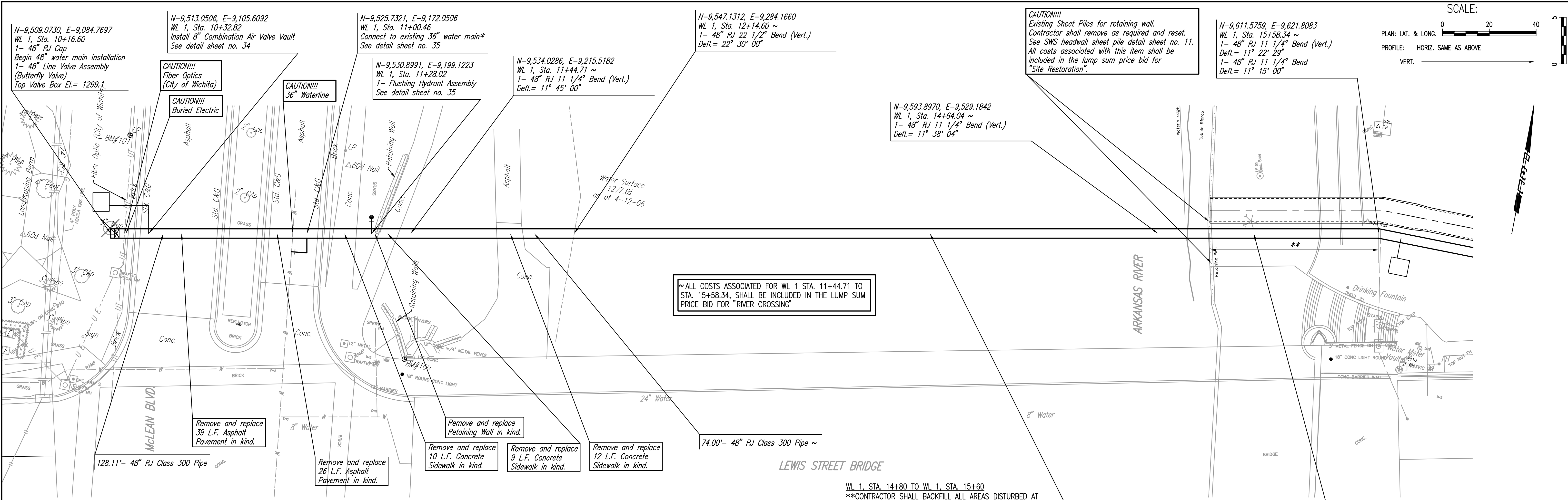


DATE	
BY	
CHECKED	
CHECKED	
PLAN	

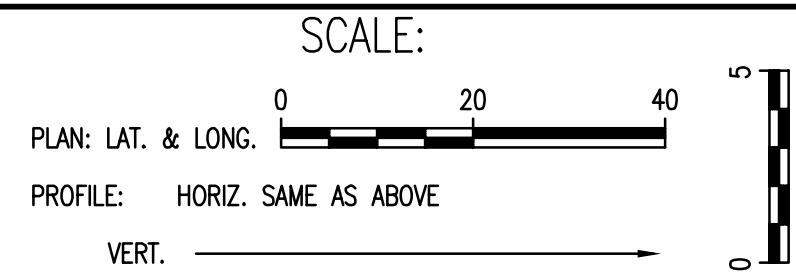
DATE	
BY	
CHECKED	
CHECKED	
PROFILE	

Save 05-25-2006 10:54:48 AM by JCA
 J:\SR\001\2005\05287\001\PhaseA\2005-05-26 to COM\DWG\29-WL Line 01



CAUTION!!!
 Existing Sheet Piles for retaining wall. Contractor shall remove as required and reset. See SWS headwall sheet pile detail sheet no. 11. All costs associated with this item shall be included in the lump sum price bid for "Site Restoration".

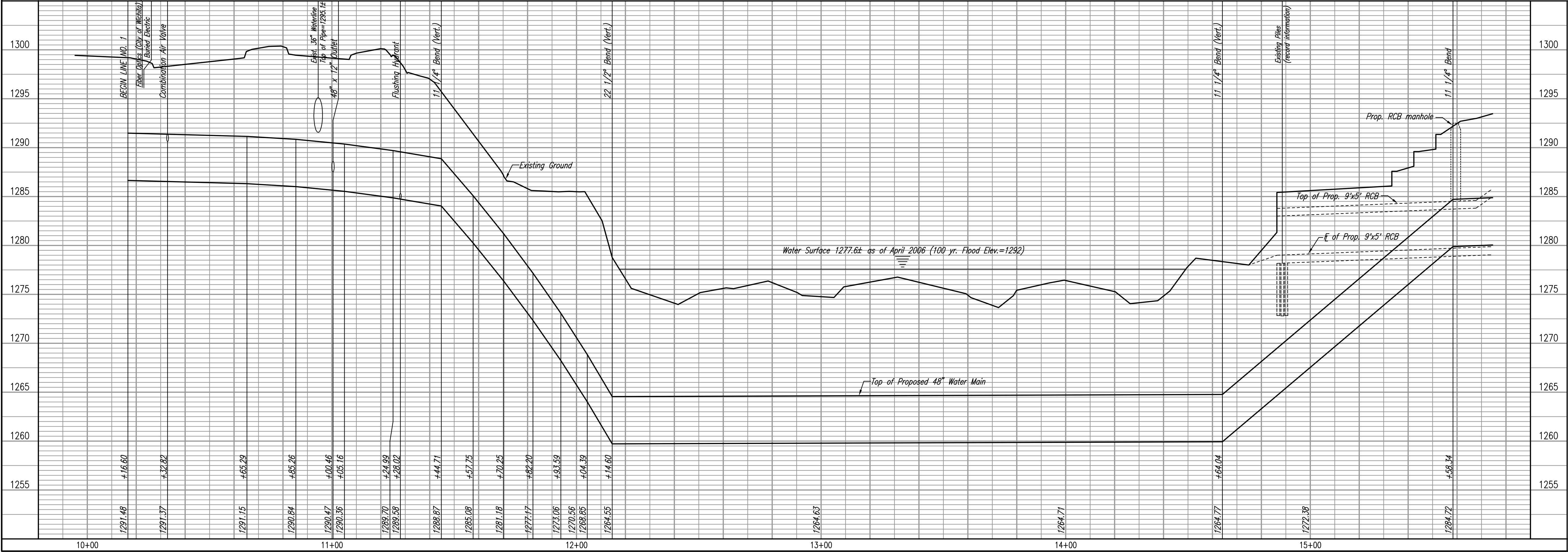
N-9,611.5759, E-9,621.8083
 WL 1, Sta. 15+58.34 ~
 1- 48" RJ 11 1/4" Bend (Vert.)
 Defl.= 11° 22' 29"
 1- 48" RJ 11 1/4" Bend
 Defl.= 11° 15' 00"



* PRIOR TO BEGINNING CONSTRUCTION, THE CONTRACTOR SHALL EXCAVATE THE EXISTING 36" WATERLINE AT STATION 11+00.46 TO VERIFY PIPE SIZE, TYPE, FITTINGS, AND HORIZONTAL AND VERTICAL LOCATION. THE CONTRACTOR SHALL REPORT HIS FINDINGS TO THE ENGINEER SO THAT ANY NECESSARY PLAN MODIFICATIONS MAY BE MADE. ANY ADDITIONAL LABOR OR MATERIALS NECESSARY TO COMPLETE THE CONNECTION SHALL BE CONSIDERED SUBSIDIARY TO THE PROJECT.

~ALL COSTS ASSOCIATED FOR WL 1 STA. 11+44.71 TO STA. 15+58.34, SHALL BE INCLUDED IN THE LUMP SUM PRICE BID FOR "RIVER CROSSING"

WL 1, STA. 14+80 TO WL 1, STA. 15+60
 **CONTRACTOR SHALL BACKFILL ALL AREAS DISTURBED AT PROPOSED WATERLINE AND BELOW PROPOSED RCB WITH ASTM C-33 SIZE 67 CRUSHED ROCK COMPACTED TO 100% (MINIMUM) ASTM D-698. ALL COSTS ASSOCIATED WITH THIS ITEM SHALL BE INCLUDED IN THE PRICE BID FOR PIPE IN PLACE.



WATERWALK PUBLIC IMPROVEMENTS - PHASE 2 PACKAGE 2
 (SOUTHEAST 46" WATERLINE - PHASE 1A)

WATERLINE NO. 1

Professional Engineering Consultants, P.A.
 303 S. TOPEKA • WICHITA, KANSAS 67202
 316-262-2691 • FAX 316-262-3003

Designed By: MDK
 Drawn By: JCA

Job No. 35-05787-001-042
 Date March 2006

JAMES L. ARKOVIR, P.E. - CITY ENGINEER
 CITY OF WICHITA, PROJECT NO. 448-301B2

Sheet 29 of 47