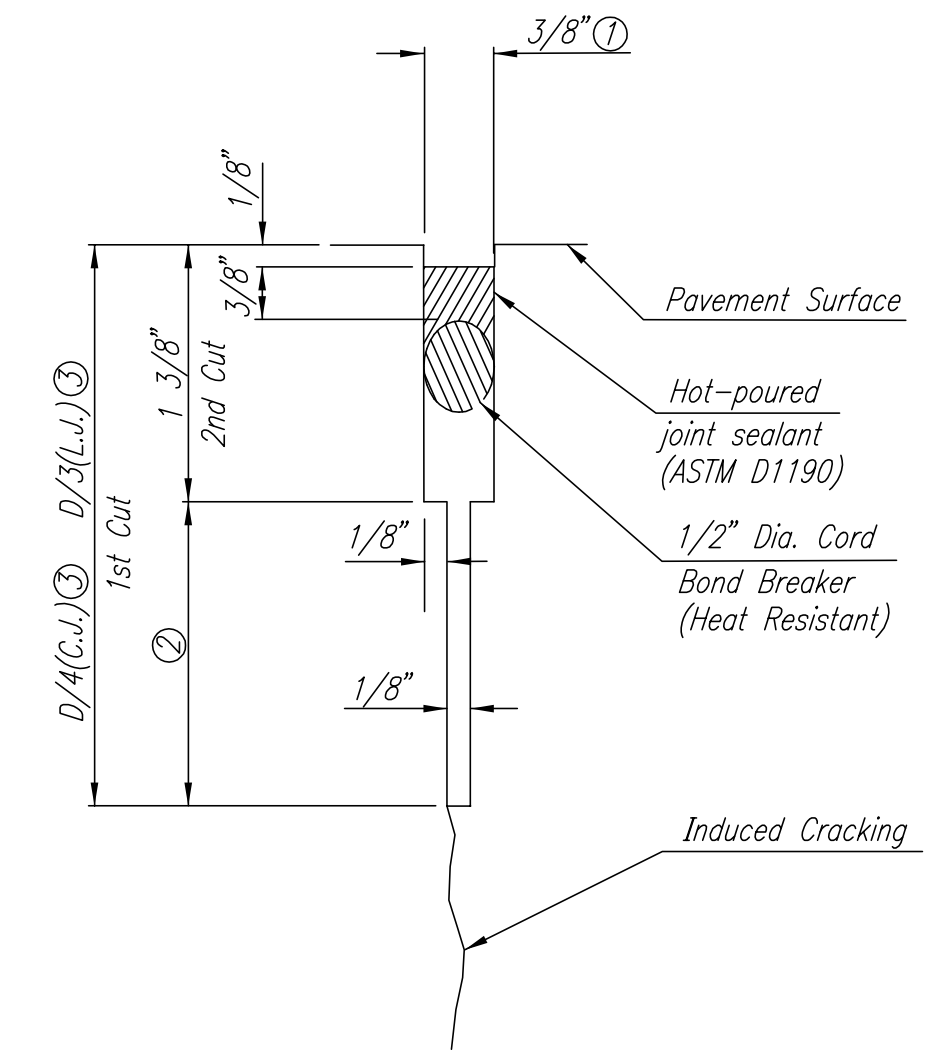


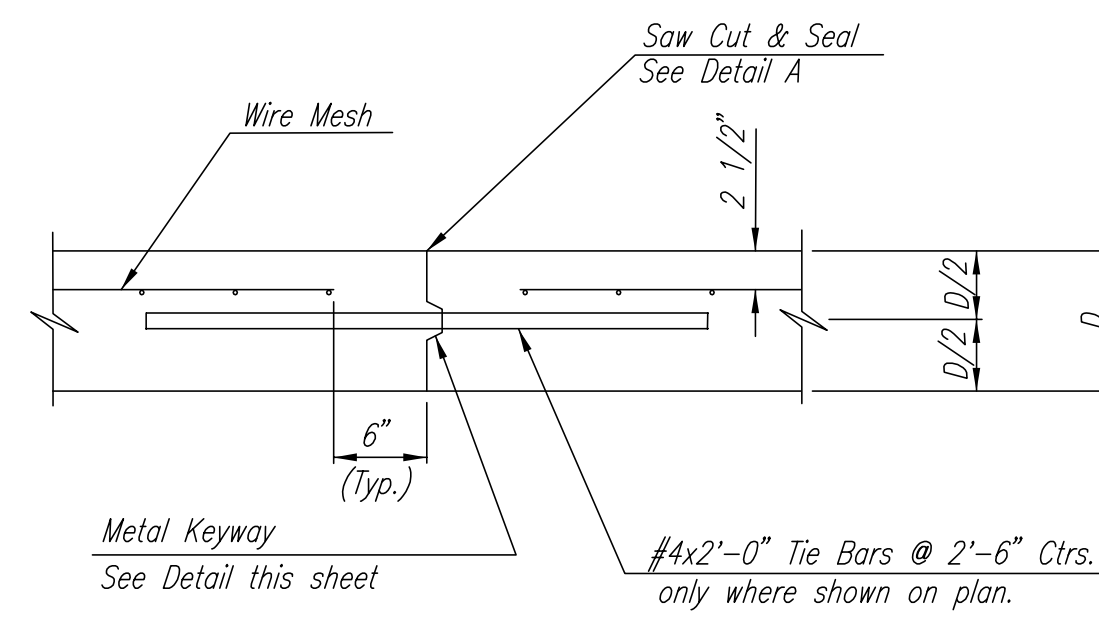
WING REINFORCING DETAIL

NOTE: OMIT WIRE FABRIC REINFORCING IN THIS SECTION.

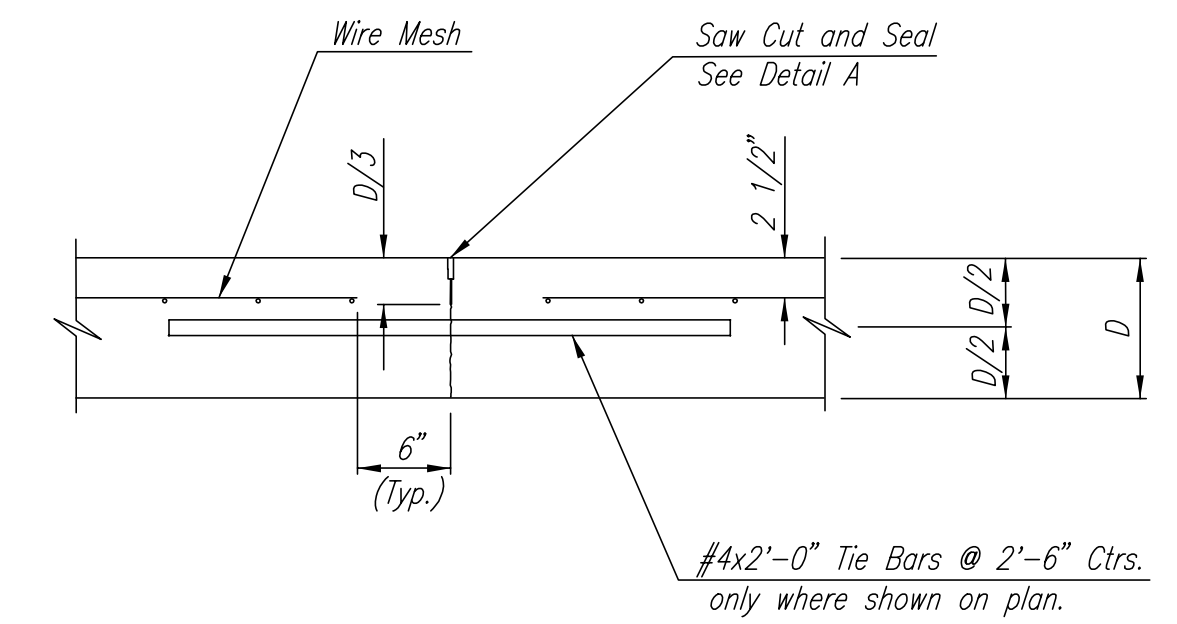


DETAIL A

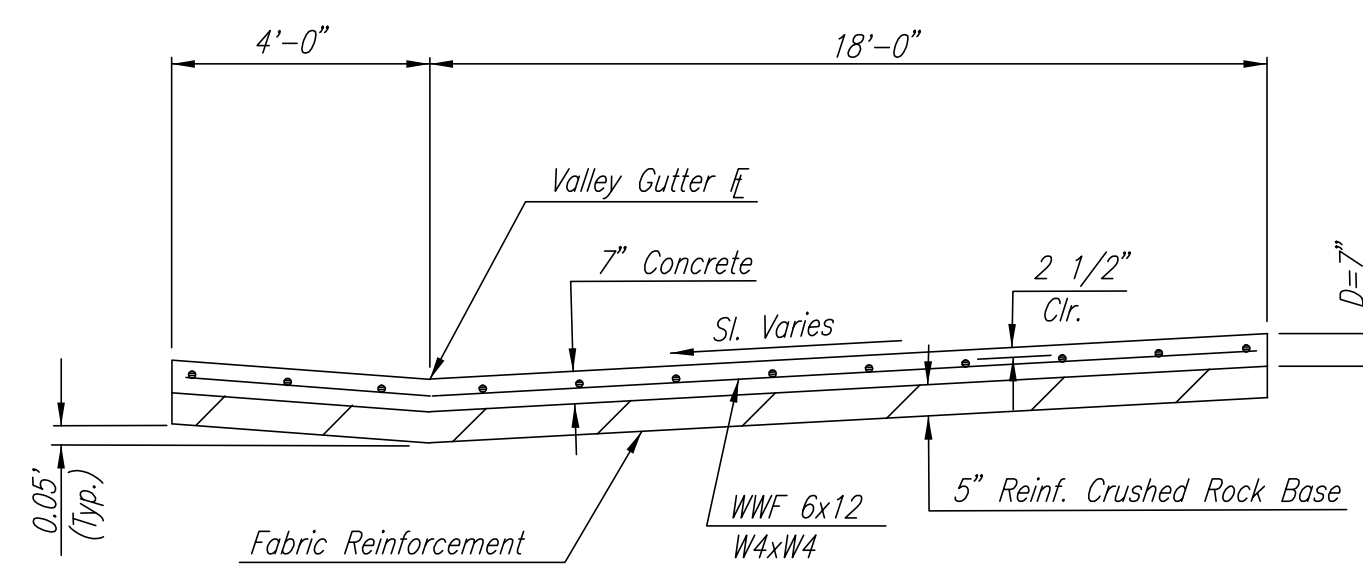
- ① To be accomplished in 2 cuts for Longitudinal Joints and Contraction Joints. Initial cut to be 1/8" wide.
- ② Eliminate bottom of cut when metal keyway is used as part of Longitudinal or Transverse Construction Joint and at Doweled Construction Joint Locations.
- ③ 1 1/2" Minimum



LONGITUDINAL CONSTRUCTION JOINT DETAIL
REINFORCED PAVEMENT
(TRANSVERSE SECTION)
(ALTERNATE L.J.)

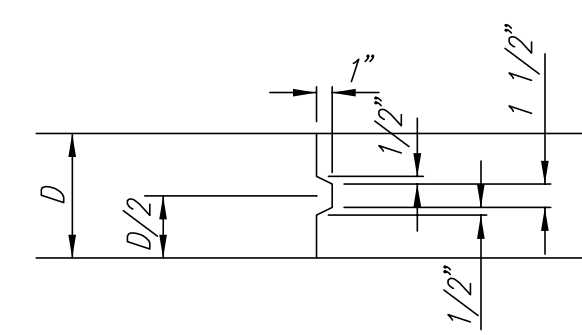


LONGITUDINAL JOINT DETAIL
REINFORCED PAVEMENT
(TRANSVERSE SECTION)
(L.J.)

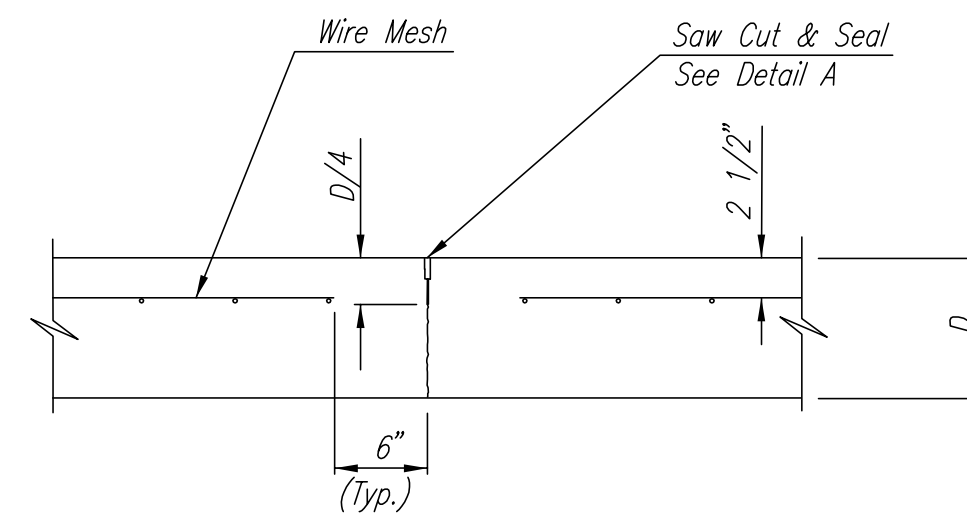


SECTION A-A

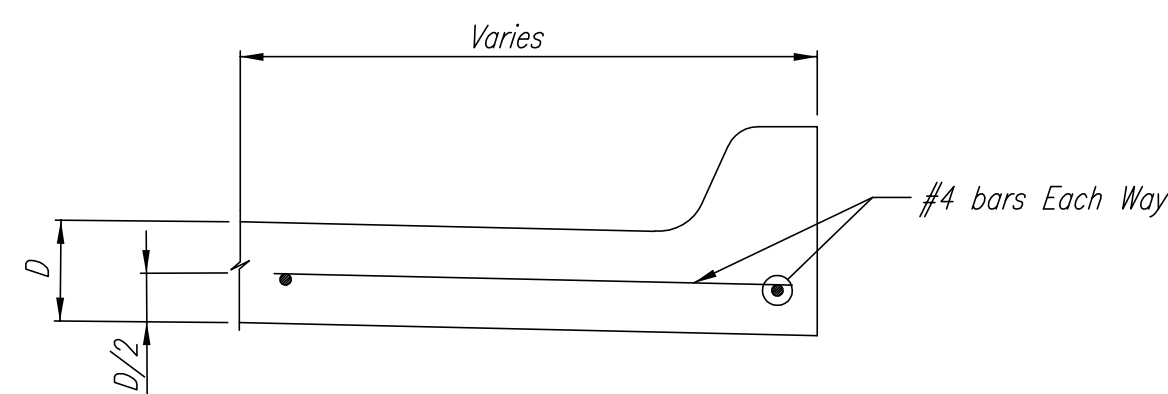
NOTE: OMIT REINFORCING MESH AT ALL JOINTS
NOTE: ALL CONCRETE VALLEY GUTTER REINFORCEMENT SHALL BE ADEQUATELY SUPPORTED BY BAR CHAIRS IN THE REQUIRED POSITION UNLESS APPROVED OTHERWISE BY THE ENGINEER.



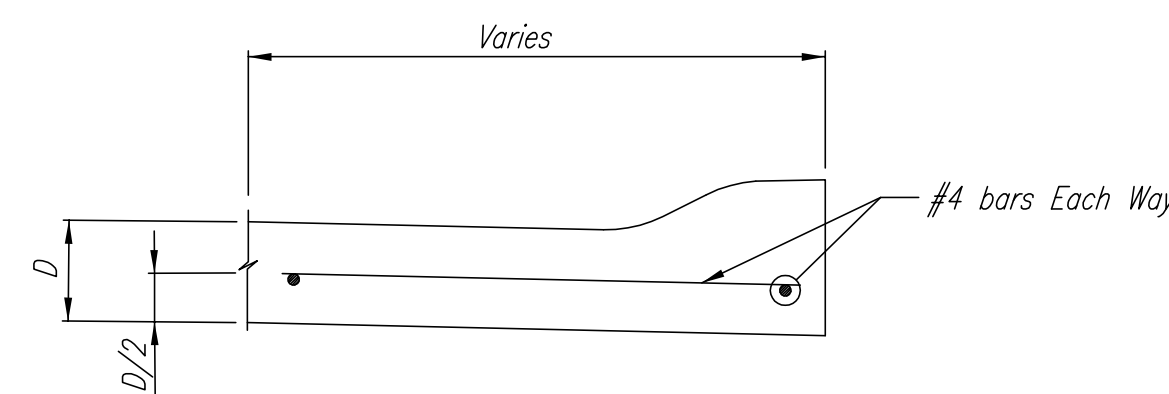
KEYWAY DETAIL



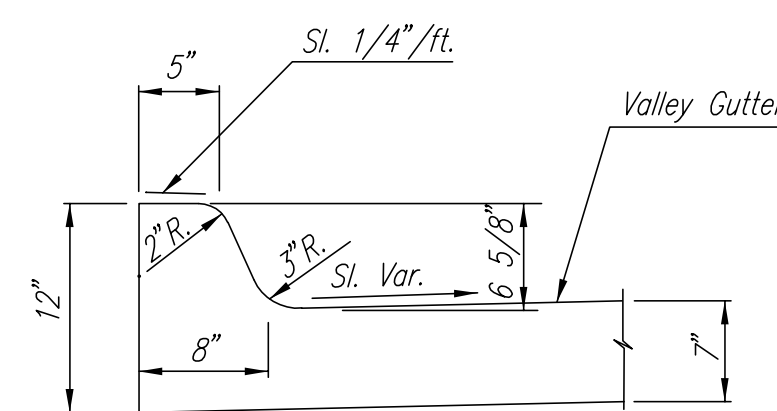
CONTRACTION JOINT DETAIL
REINFORCED PAVEMENT
(C.J.)



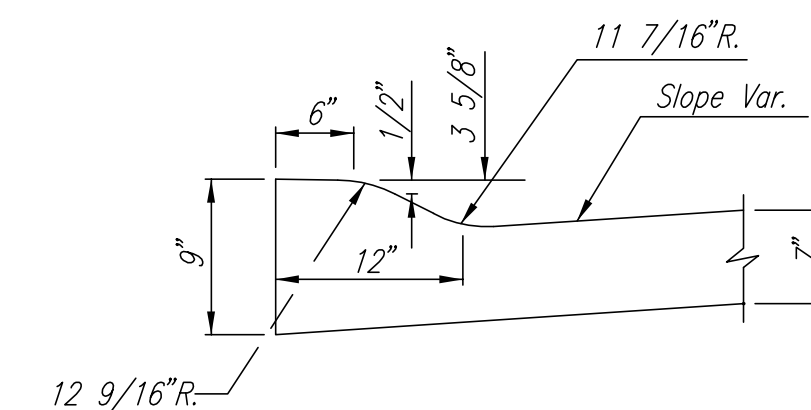
SECTION C-C



SECTION C-C

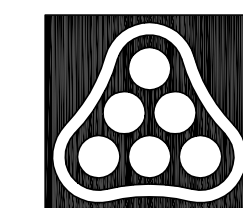


DETAIL B



DETAIL C
(ROLL-TYPE CURB)

DSNR: BDB OPER: BJS SCALE: 1"=10'-00"
03/2003\03345\000\VALGUTDL 02-10-2004 08:35:27 am



No.	Revision	By	Date
AVALON PARK			
VALLEY GUTTER DETAILS			
JAMES L. ARMOUR, P.E.—ACTING CITY ENGINEER CITY OF WICHITA PROJECT NO. 472-83835			
Professional Engineering Consultants, P.A. 303 S. TOPEKA • WICHITA, KANSAS 67202 316-262-2691 • FAX 316-262-3003			
Designed by	BDB	Job No.	35-03345-000
Drawn by	BJS	Date	JUNE 2002
			Sht. 11 of 43