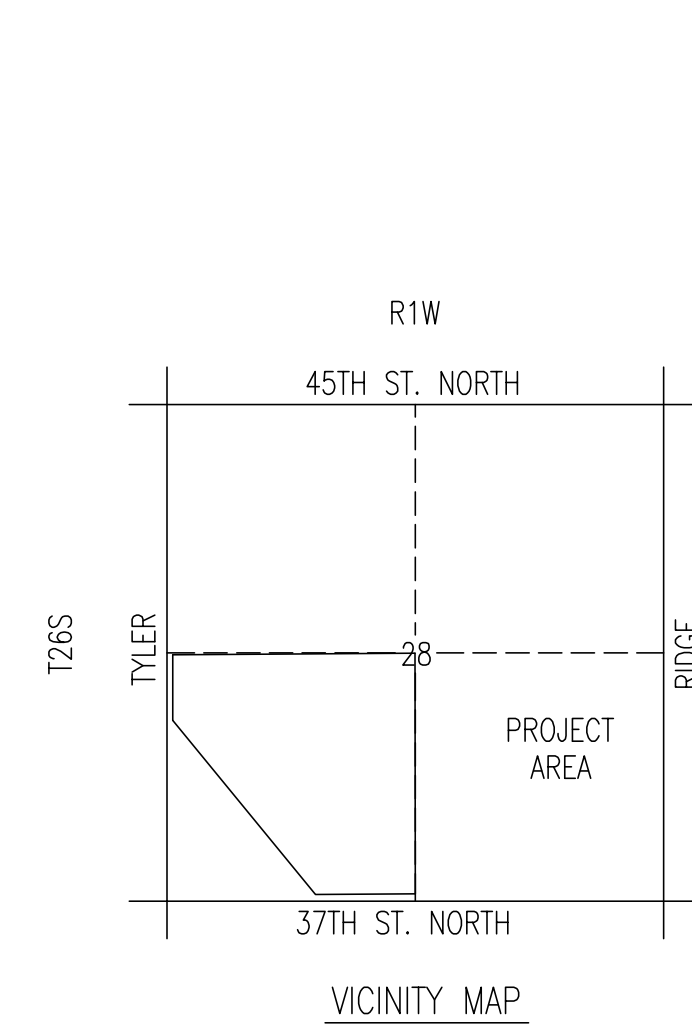


FOUR CORNER PLAN FOR
AVALON PARK
 AN ADDITION TO WICHITA
 SEDGWICK COUNTY, KANSAS

SCALE: 1" = 100'
 • = 3/4" IRON PIPE W/PCC CAP UNLESS OTHERWISE NOTED



- LEGEND
- (X) STD. BASEMENT
 - (W.O.) WALK-OUT BASEMENT
 - (V.O.) VIEW-OUT BASEMENT
 - STORM WATER FLOW
 - SPOT ELEVATION
 - W.O. WALK-OUT
 - V.O. VIEW-OUT
 - T.F. TOP OF FOUNDATION

VO OR WO WAS CONSIDERED ACCEPTABLE IF THE TOP OF FOUNDATION WAS 5' OR LESS ABOVE THE PROPERTY LINE.

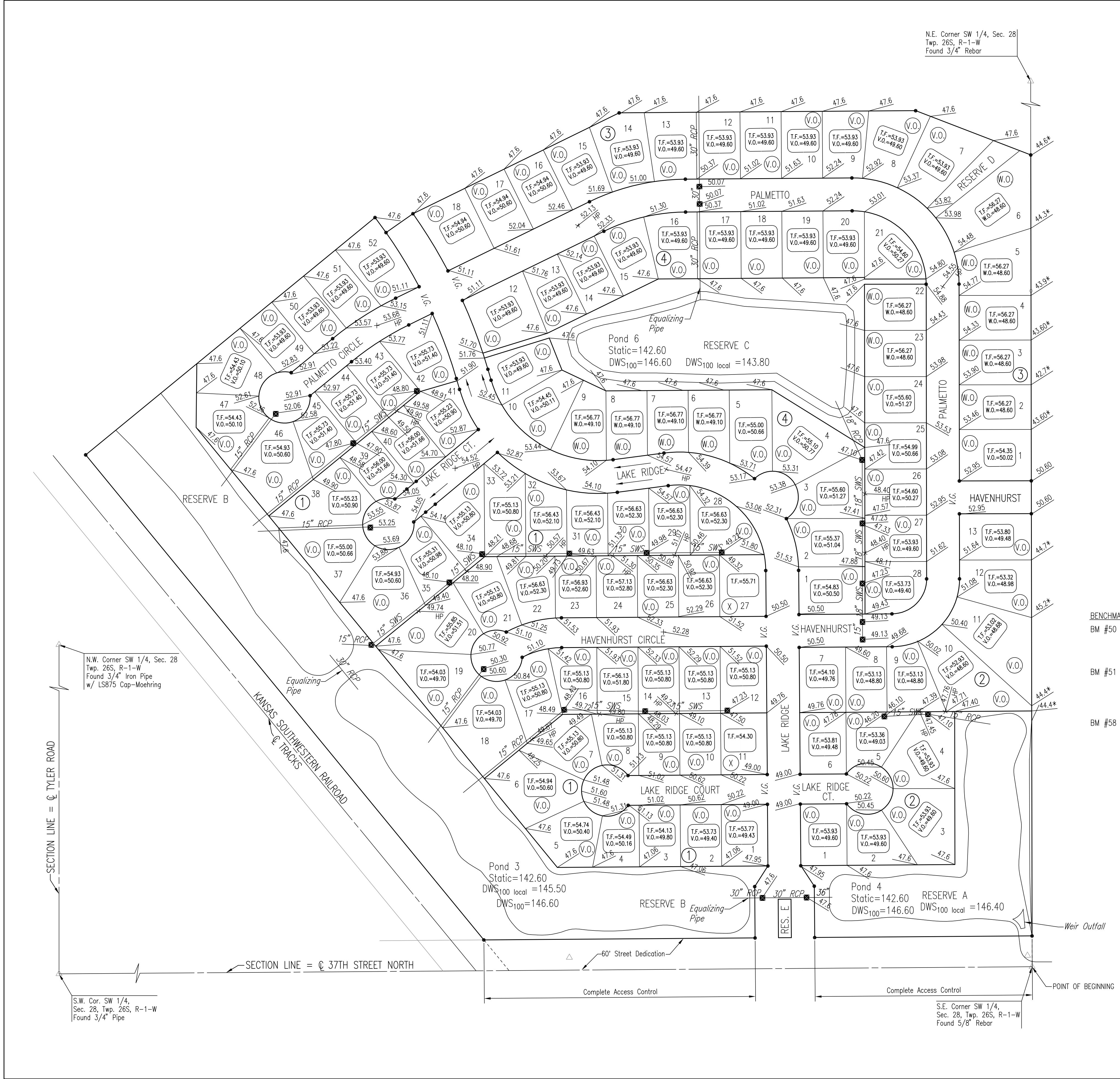
BENCHMARKS:

BM #50 - "T" Post, 1/2 mile E. of Tyler Rd., 14' N. of N. edge 37th St. N.	Elev.=1333.15 N.G.V.D. Elev.=145.75 CITY DATUM
BM #51 - "T" Post, 3/8 mile E. of Tyler Rd., 14' N. of N. edge 37th St. N., E. of R.R. tracks 186±	Elev.=1335.55 N.G.V.D. Elev.=148.15 CITY DATUM
BM #58 - Chiseled "a" on S. end concrete headwall, E. end RCB under Tyler Rd. at 1/2 mile line, S. of K96 Highway.	Elev.=1342.03 N.G.V.D. Elev.=154.63 CITY DATUM

MINIMUM OPENINGS	ELEVATION (N.G.V.D.)	CITY DATUM
BLOCK 1		
LOTS 1-6, 18-19	1336.0	148.6
LOTS 36-37, 46-52	1349.6	149.6
LOTS 7-17, 20-22, 33-35	1338.2	150.8
LOTS 38-45	1338.3	150.9
LOTS 23, 31-32	1339.0	151.6
LOTS 24-30	1339.7	152.3
BLOCK 2		
LOTS 1-4, 10-13	1336.0	148.6
LOTS 5-9	1336.2	148.8
BLOCK 3		
LOTS 1-6	1336.0	148.6
LOTS 7-18	1349.6	149.6
BLOCK 4		
LOTS 4-9, 22-25	1336.0	148.6
LOTS 1-3, 26-28	1336.8	149.4
LOTS 10-21	1349.6	149.6

REVISED FEBRUARY 6, 2004

DSNR: BDB OPER: BJS SCALE: 1"=100.00
 Q:\2003\03345\000\4CRNR-A_at 02-10-2004 09:07:17 am



N.W. Corner SW 1/4, Sec. 28, Twp. 26S, R-1-W
 Found 3/4" Iron Pipe
 w/ LS875 Cap-Moehring

S.W. Cor. SW 1/4, Sec. 28, Twp. 26S, R-1-W
 Found 3/4" Pipe

S.E. Corner SW 1/4, Sec. 28, Twp. 26S, R-1-W
 Found 5/8" Rebar

No.	Revision	By	Date
AVALON PARK-PHASE 1			
4-CORNER LOT GRADING PLAN (FOR INFORMATION ONLY)			
JAMES L. ARMOUR, P.E.-ACTING CITY ENGINEER CITY OF WICHITA PROJECT NO. 472-83835			
Professional Engineering Consultants, P.A. 303 S. TOPEKA • WICHITA, KANSAS 67202 316-262-2691 • FAX 316-262-3003			
Designed by	BDB, SPL	Job No.	35-03345
Drawn by	BJS	Date	JUNE 2002
			Sht. 29 of 43

