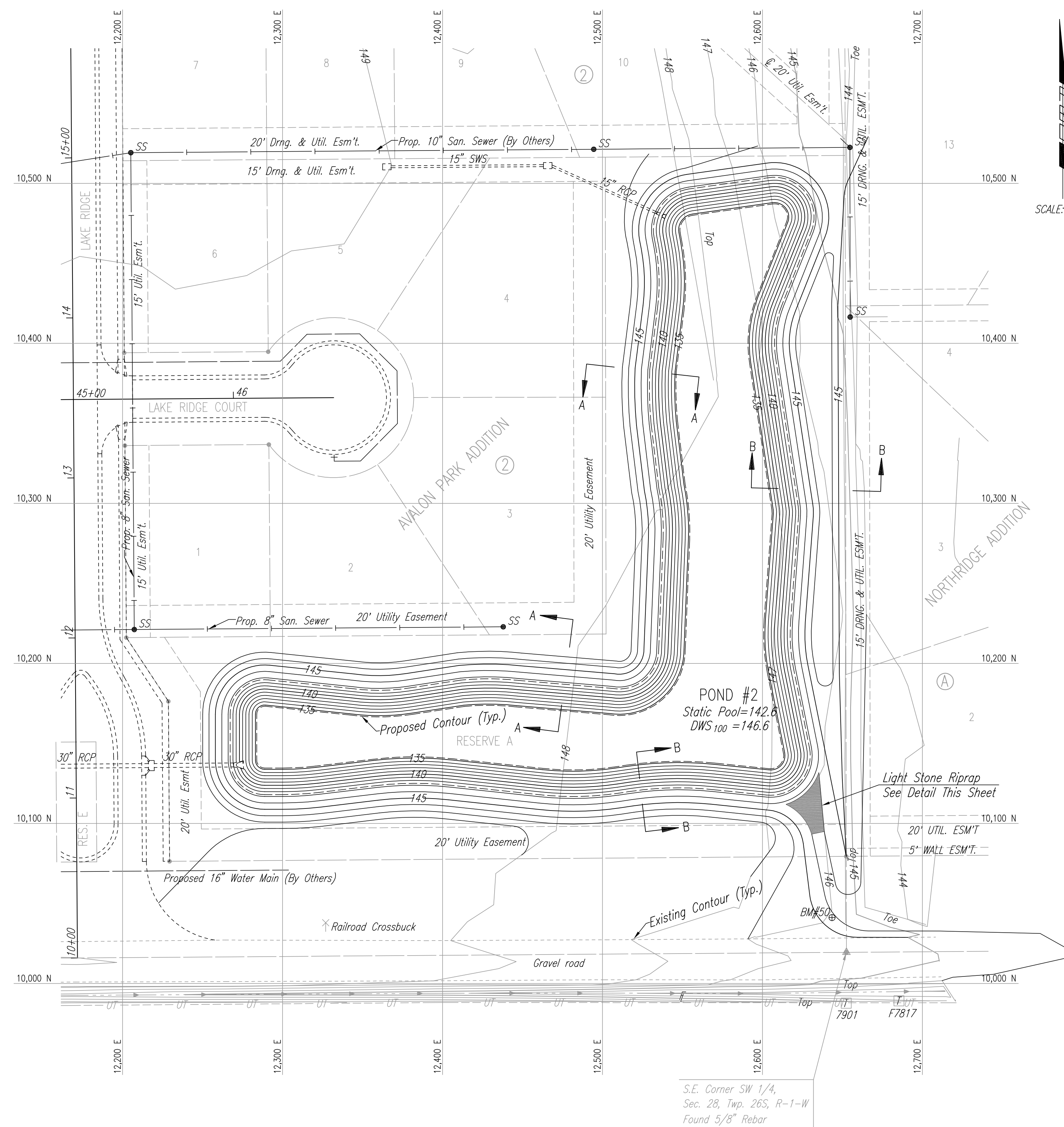
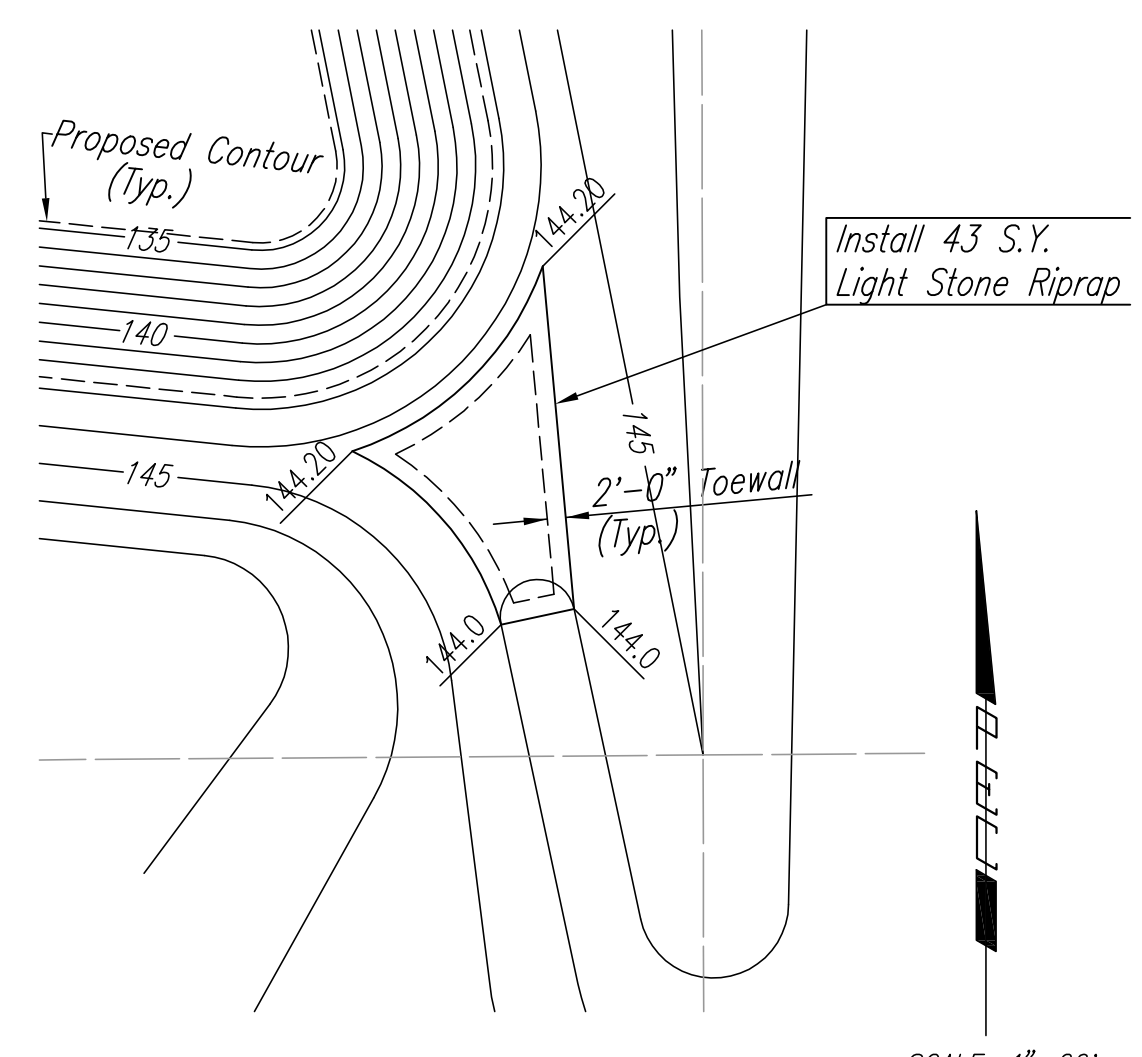
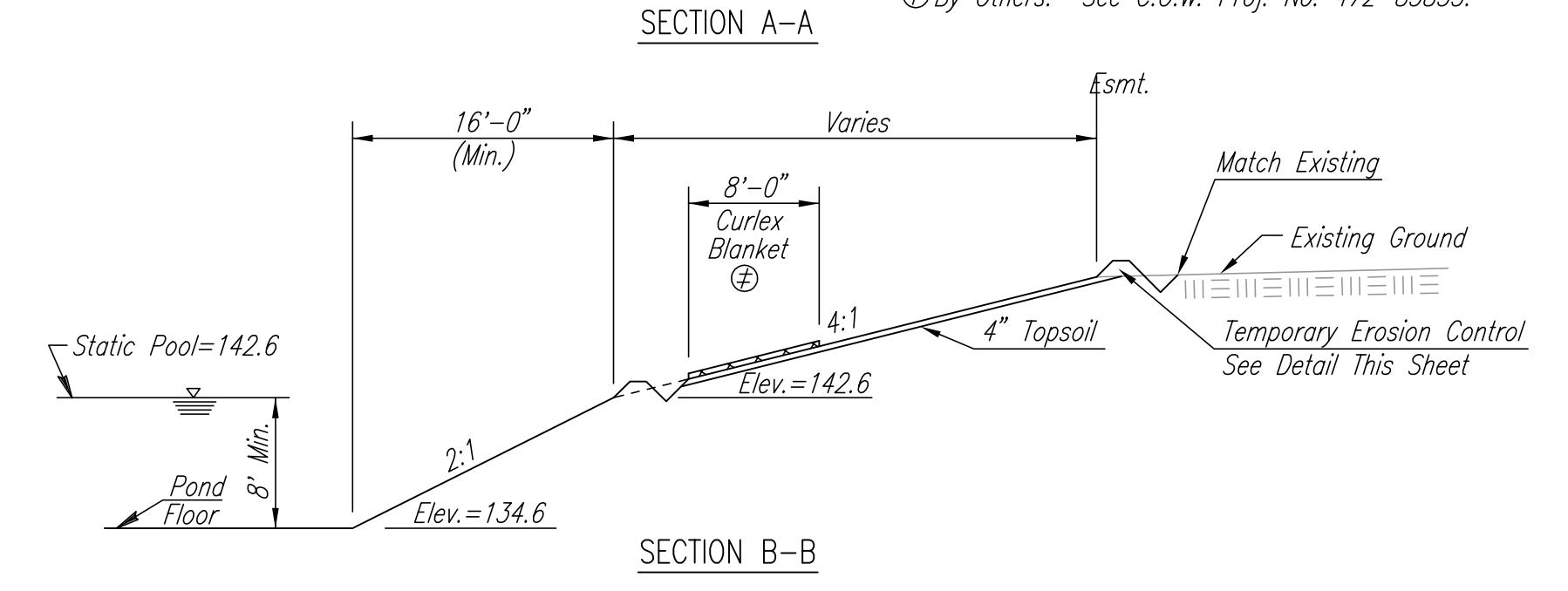
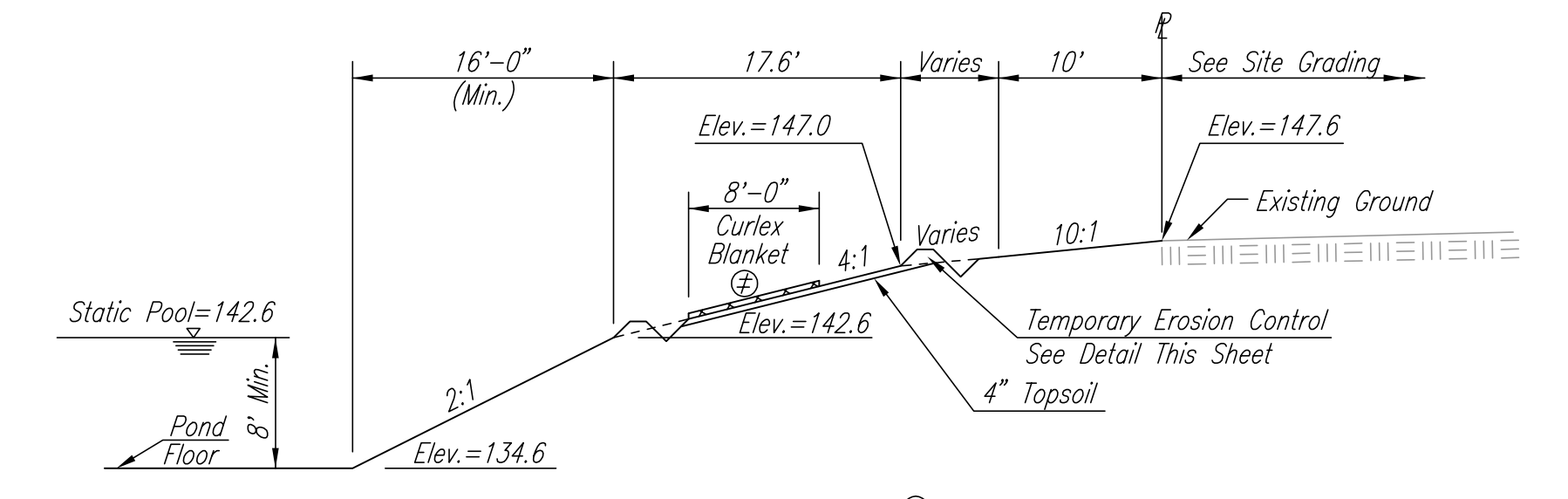


DSNR: BDB OPER: BJS SCALE: 1"=40.00  
 Q:\2003\03345\003\POND2 02-10-2004 02:11:54 pm

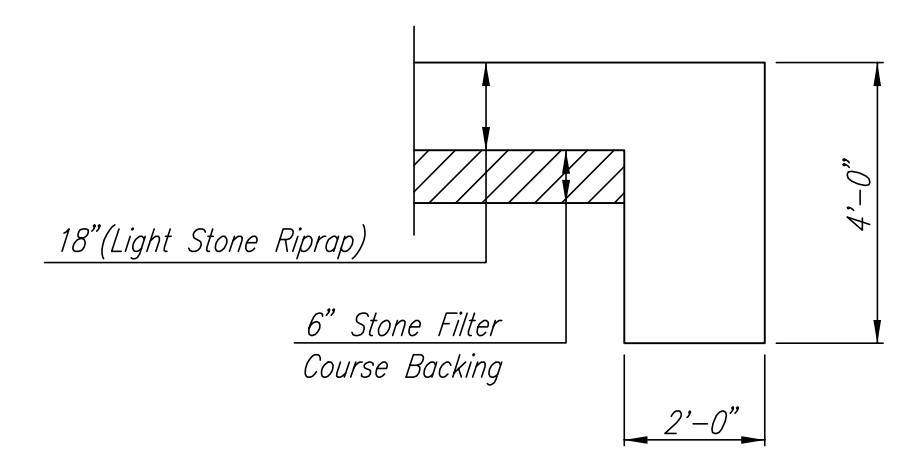


SCALE: 1"=40'

**POND GRADING NOTES**  
 CONTRACTOR SHALL PERFORM GRADING AS SHOWN BY CONTOURS AND SPOT ELEVATIONS ON THIS SHEET. EARTHWORK VOLUMES FOR THIS GRADING HAVE BEEN INCLUDED IN THE BID ITEM "UNCLASSIFIED EXCAVATION".  
 HORIZONTAL CONTROL FOR POND LAYOUT MAY BE SCALED FROM THIS DRAWING. SEE SHEET NO. 3 FOR ADDITIONAL CONTROL POINT INFORMATION.  
 ALL EXCESS MATERIAL EXCAVATED AS A RESULT OF THIS GRADING SHALL REMAIN ON-SITE FOR USE IN EITHER STREET EMBANKMENT OR SITE GRADING AS PART OF PROJ. NO. 472-83835.

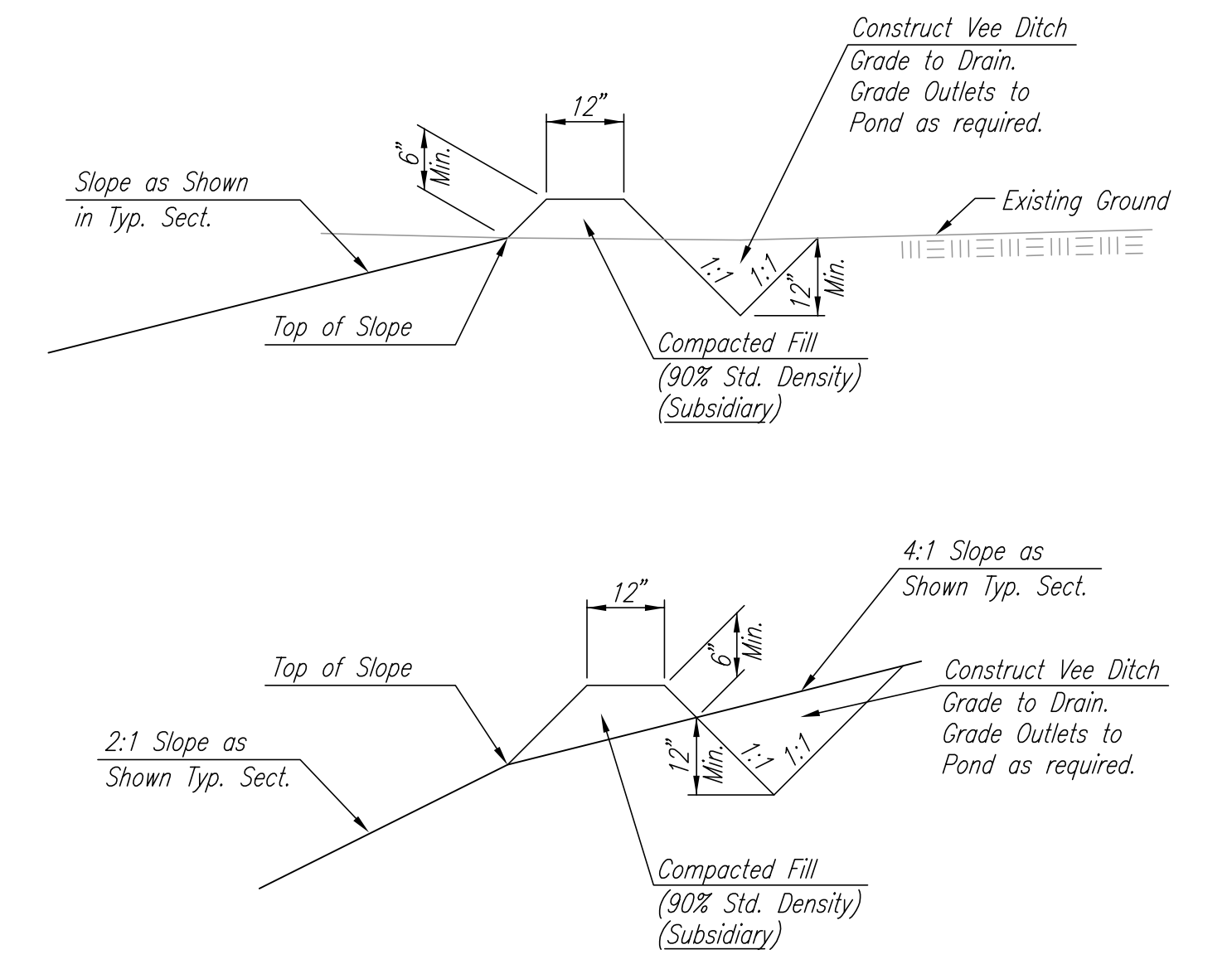


RIPRAP PLAN



TYPICAL SECTION THRU TOEWALL  
 NO SCALE

- NOTES**
- ALL RIPRAP FOR THIS PROJECT SHALL BE NATURAL STONE. NEITHER BROKEN CONCRETE, FABRIC ENVELOPE, NOR PREMIXED DRY PACKAGED CONCRETE BAG ALTERNATES WILL BE ALLOWED.
  - TOEWALLS SHALL BE INSTALLED ALONG ALL EDGES OF STONE RIPRAP.
  - GROUTING OF THE SURFACE OF THE RIPRAP SHALL NOT BE PERFORMED. GROUTING OF THE TOEWALLS SHALL BE PERFORMED PER CITY SPECIFICATIONS.



TEMPORARY EROSION CONTROL DETAIL FOR SLOPE PROTECTION

The Engineer may determine that the height of berm or depth of ditch should be increased over that shown if drainage conditions are producing slope erosion.

TEMPORARY EROSION CONTROL BERMS AND INTERCEPT DITCHES SHALL BE CONSTRUCTED AT LOCATIONS SHOWN ON THE PLANS OR AS DIRECTED BY THE ENGINEER.

ALL AREAS WHERE FLOW IS CONCENTRATED SHALL BE PROTECTED BY SILTATION BARRIERS PRIOR TO DISCHARGING INTO ANY DITCH, STORM SEWER, OR WATERCOURSE, AS APPROVED BY THE ENGINEER.

MEASUREMENT AND PAYMENT: THIS WORK SHALL NOT BE PAID FOR DIRECTLY BUT SHALL BE CONSIDERED SUBSIDIARY TO "EXCAVATION".

No.	Revision	By	Date
AVALON PARK-PHASE 1 STORM WATER DRAIN NO. 213 <b>POND NO. 2 GRADING PLAN</b> JAMES L. ARMOUR, P.E.-ACTING CITY ENGINEER CITY OF WICHITA PROJECT NO. 468-83693 <b>Professional Engineering Consultants, P.A.</b> 303 S. TOPEKA • WICHITA, KANSAS 67202 316-262-2691 • FAX 316-262-3003			
Designed by	BDB	Job No.	35-03345-003
Drawn by	BJS	Date	JUNE 2002
			Sht. 5 of 11

