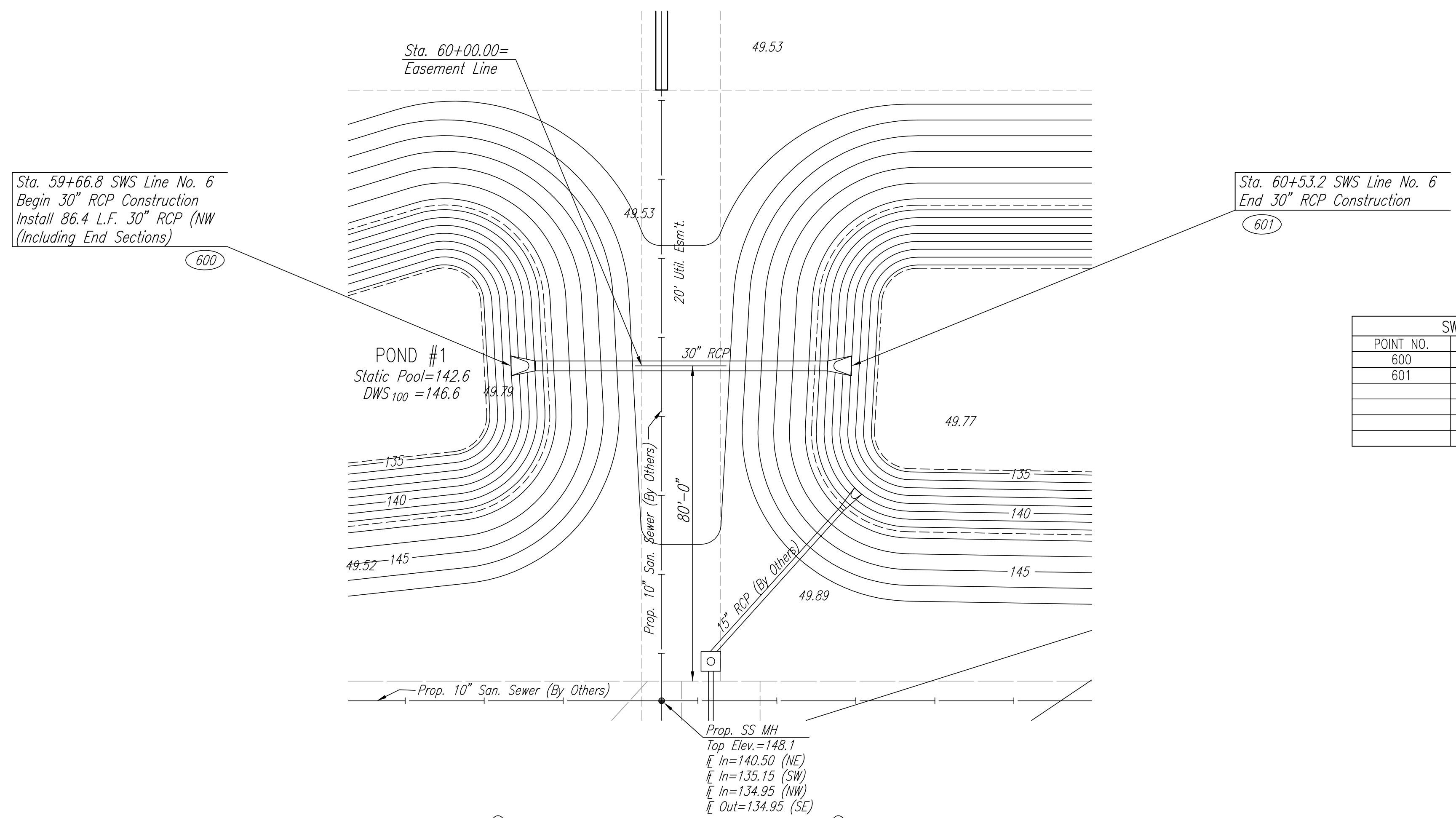
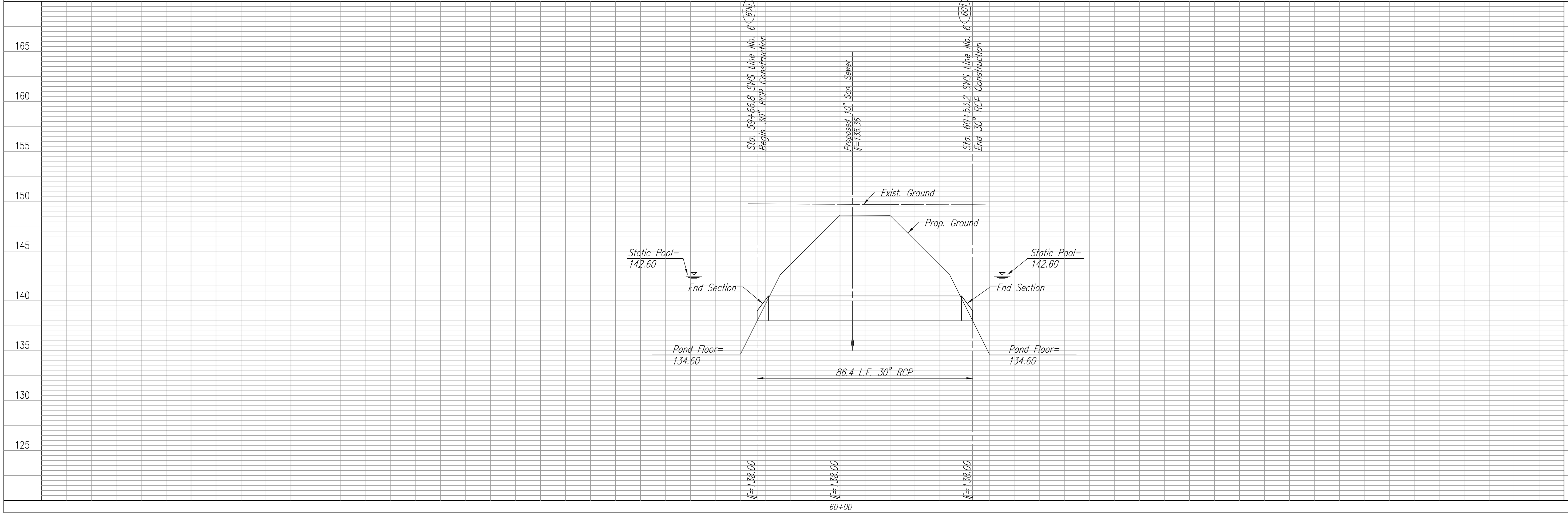


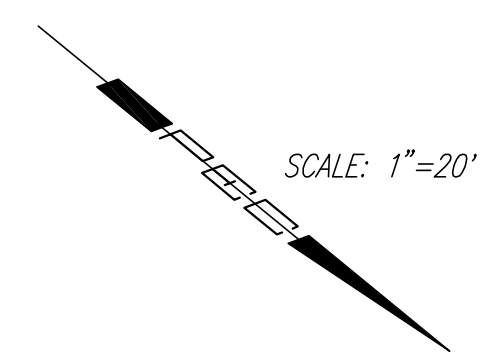
|      |         |      |
|------|---------|------|
| PLAN | CHECKED | DATE |
|      | CHECKED |      |
|      |         |      |
|      |         |      |

|         |         |      |
|---------|---------|------|
| PROFILE | CHECKED | DATE |
|         | CHECKED |      |
|         |         |      |
|         |         |      |

DSNR: BOB OPER: BUS SCALE: 1"=20.00  
 Q:\2003\03345\003\swsline1 02-10-2004 09:27:25 am



| SWS COORDINATES |            |            |
|-----------------|------------|------------|
| POINT NO.       | N          | E          |
| 600             | 10626.1563 | 11285.7072 |
| 601             | 10559.3640 | 11340.5135 |
|                 |            |            |
|                 |            |            |



**Professional Engineering Consultants, P.A.**  
 303 S. TOPEKA • WICHITA, KANSAS 67202  
 316-262-2691 • FAX 316-262-3003

Designed By: BOB  
 Drawn By: BUS

Job No.: 35-03345-003  
 Date: JUNE 2002

AVALON PARK-PHASE 1  
 STORM WATER DRAIN NO. 213  
**SWS LINE NO 1**

JAMES L. ARMOUR, P.E.-ACTING CITY ENGINEER  
 CITY OF WICHITA PROJECT NO. 468-85693