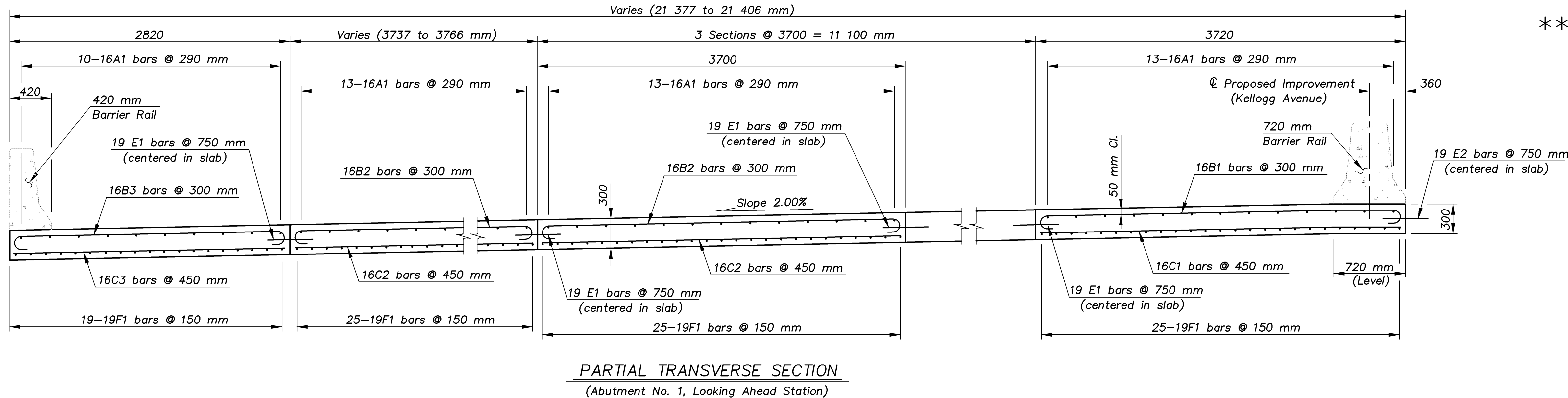


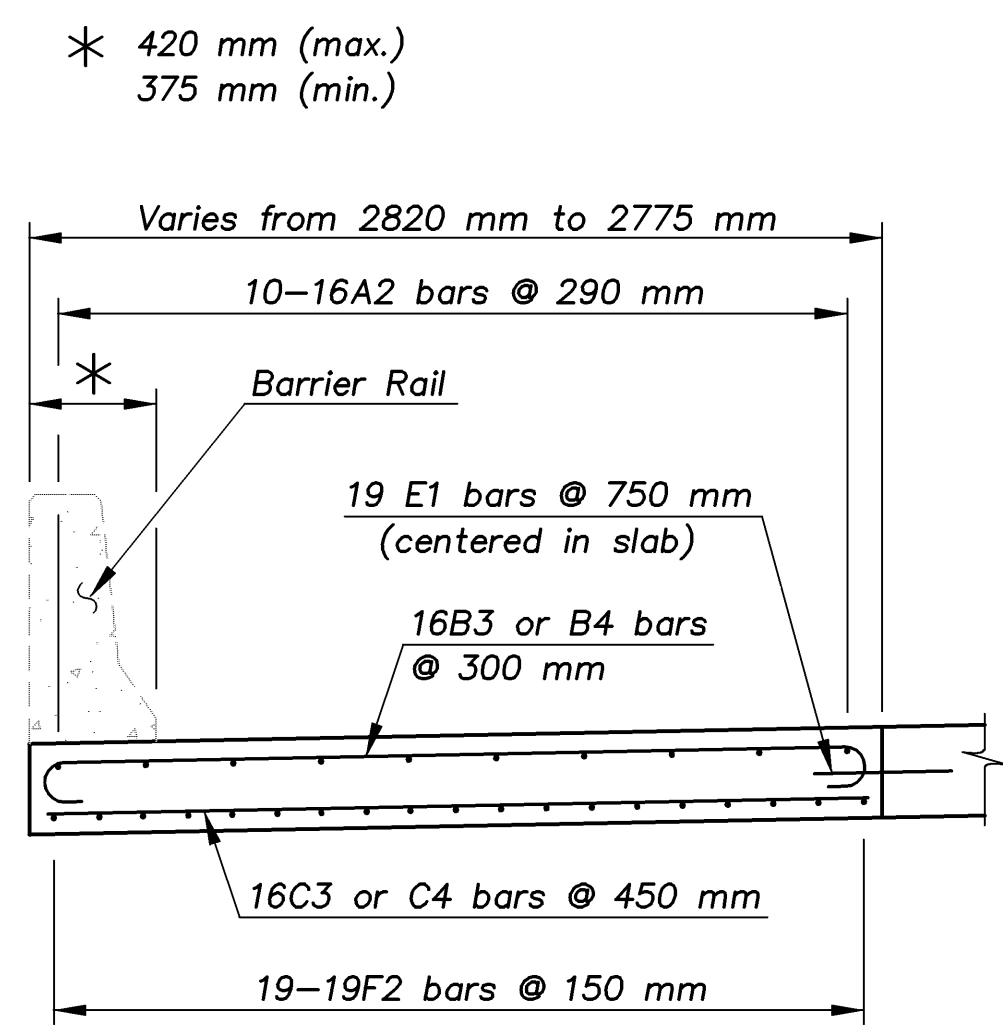
E.F. INDICATES EACH FACE.  
N.F. INDICATES NEAR FACE.  
F.F. INDICATES FAR FACE.

STATE	PROJECT NO.	YEAR	SHEET NO.	TOTAL SHEETS
KANSAS	54-87 K-8258-08	2005	30	223

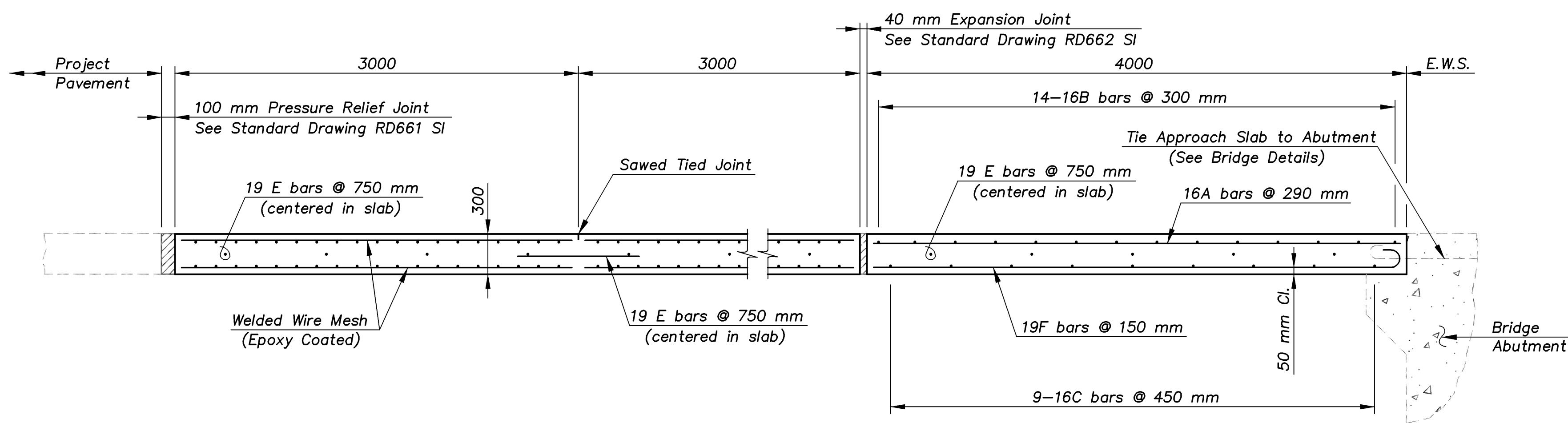
\*\* 19 mm dia. smooth bar.



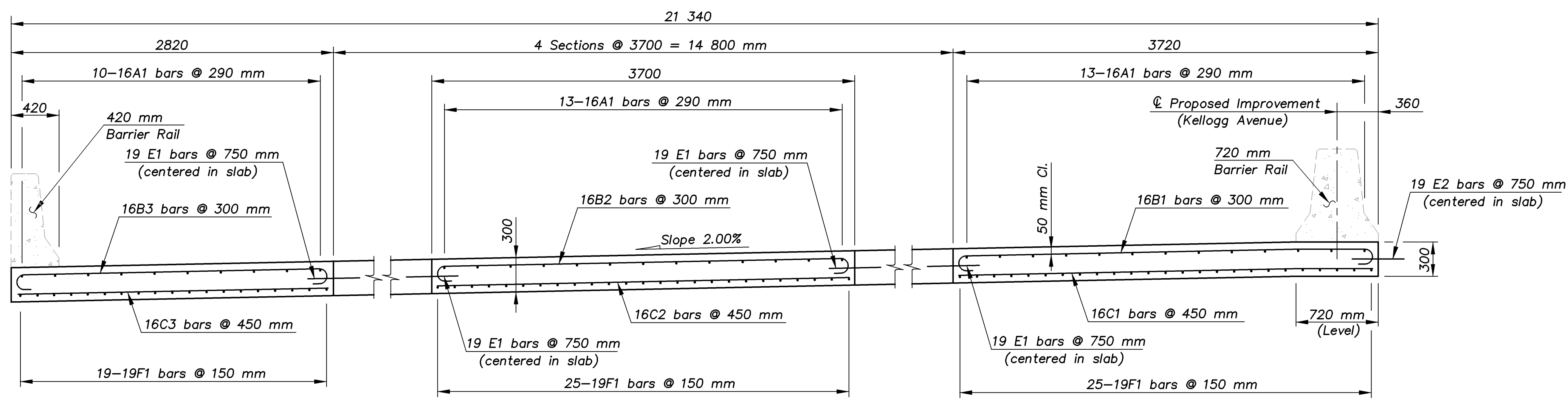
**PARTIAL TRANSVERSE SECTION**  
(Abutment No. 1, Looking Ahead Station)



**OUTSIDE SHOULDER SECTION**  
(Looking Ahead Station)



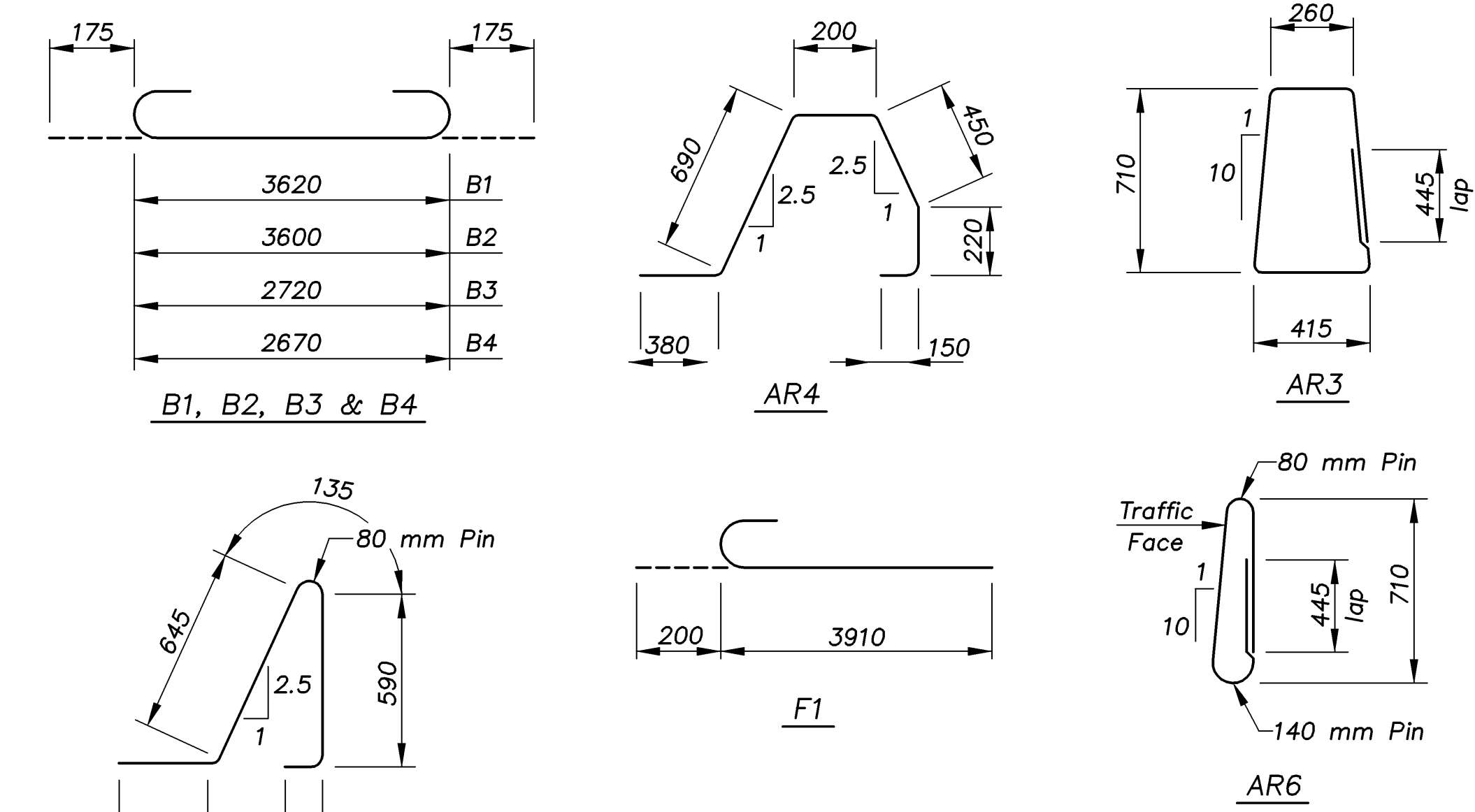
**LONGITUDINAL SECTION THRU APPROACH SLAB**



**PARTIAL TRANSVERSE SECTION**  
(Abutment No. 2, Looking Ahead Station)

BILL OF REINFORCING STEEL							
MARK	STRAIGHT BARS			BENT BARS			
	SIZE	NO.	LENGTH	MARK	SIZE	NO.	LENGTH
AR1	19	3	5900	AR3	16	34	2540
AR2	19	3	3900	AR4	16	34	2090
AR7	13	14	5900	AR5	16	34	1900
AR8	13	14	3900	AR6	16	34	1980
"FOR INFORMATION ONLY"							
E1	19	94	900	F1	19	144	4110
E2	**	13	900				
F2	19	38	2900	B1	16	14	3970
				B2	16	56	3950
A1	16	75	3900	B3	16	24	3070
A2	16	20	2900	B4	16	10	3020
C1	16	9	3620				
C2	16	36	3600				
C3	16	16	2720				
C4	16	7	2670				

**BENDING DIAGRAMS**  
NOTE: All dimensions are out to out of bars.



EASTERN/APPROACH 1:100

KANSAS DEPARTMENT OF TRANSPORTATION  
BR. NO. 54-87-31.55(704) W.B. STA. 4+575.138

**SPECIAL CONCRETE APPROACH PAVEMENT**  
W.B. KELLOGG AVENUE OVER EASTERN

Proj. No. 54-87 K-8258-08 SEDGWICK COUNTY

DESIGNED	R.S.C.	SCALE
DETAILED	T.R.G.	DATE
QUANTITIES	T.R.G.	SHEET 2 OF 3

**CFS**  
Cook, Flatt & Strobel  
ENGINEERS, P. A.