

STATE	PROJECT NO.	YEAR	SHEET NO.	TOTAL SHEETS
KANSAS	54-87 K-8258-08	2005	47	223

LEGEND

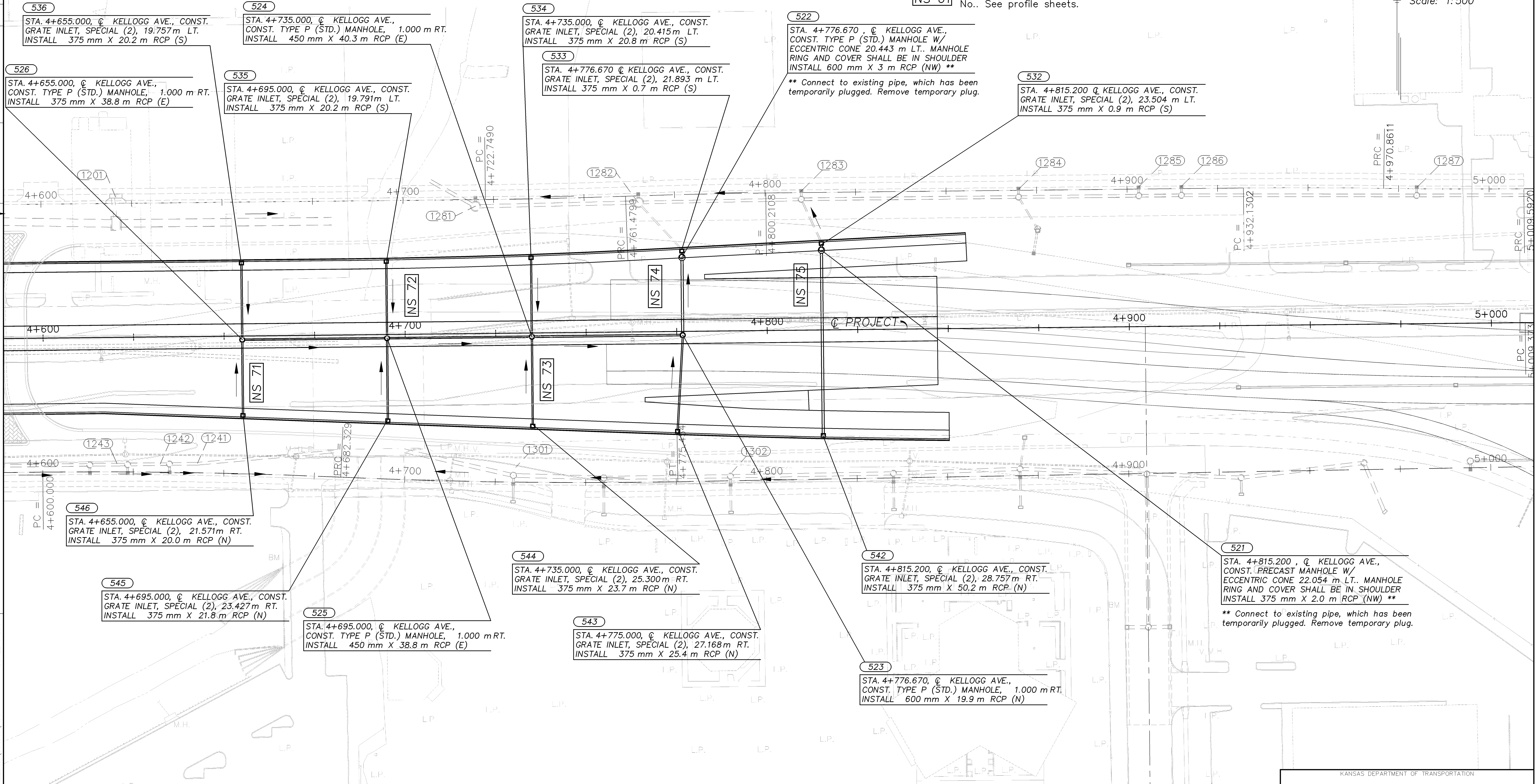


NS 61 Storm sewer reference No.. See profile sheets.

Scale: 1:500

DATE	BY

REFERENCE NOTED	REFERENCE CHECKED



536 STA. 4+655.000, @ KELLOGG AVE., CONST. GRATE INLET, SPECIAL (2), 19.757m LT. INSTALL 375 mm X 20.2 m RCP (S)

524 STA. 4+735.000, @ KELLOGG AVE., CONST. TYPE P (STD.) MANHOLE, 1.000 m RT. INSTALL 450 mm X 40.3 m RCP (E)

534 STA. 4+735.000, @ KELLOGG AVE., CONST. GRATE INLET, SPECIAL (2), 20.415m LT. INSTALL 375 mm X 20.8 m RCP (S)

522 STA. 4+776.670, @ KELLOGG AVE., CONST. TYPE P (STD.) MANHOLE W/ ECCENTRIC CONE 20.443 m LT.. MANHOLE RING AND COVER SHALL BE IN SHOULDER INSTALL 600 mm X 3 m RCP (NW) \*\*  
\*\* Connect to existing pipe, which has been temporarily plugged. Remove temporary plug.

532 STA. 4+815.200 @ KELLOGG AVE., CONST. GRATE INLET, SPECIAL (2), 23.504 m LT. INSTALL 375 mm X 0.9 m RCP (S)

526 STA. 4+655.000, @ KELLOGG AVE., CONST. TYPE P (STD.) MANHOLE, 1.000 m RT. INSTALL 375 mm X 38.8 m RCP (E)

535 STA. 4+695.000, @ KELLOGG AVE., CONST. GRATE INLET, SPECIAL (2), 19.791m LT. INSTALL 375 mm X 20.2 m RCP (S)

533 STA. 4+776.670 @ KELLOGG AVE., CONST. GRATE INLET, SPECIAL (2), 21.893 m LT. INSTALL 375 mm X 0.7 m RCP (S)

546 STA. 4+655.000, @ KELLOGG AVE., CONST. GRATE INLET, SPECIAL (2), 21.571m RT. INSTALL 375 mm X 20.0 m RCP (N)

545 STA. 4+695.000, @ KELLOGG AVE., CONST. GRATE INLET, SPECIAL (2), 23.427m RT. INSTALL 375 mm X 21.8 m RCP (N)

525 STA. 4+695.000, @ KELLOGG AVE., CONST. TYPE P (STD.) MANHOLE, 1.000 m RT. INSTALL 450 mm X 38.8 m RCP (E)

544 STA. 4+735.000, @ KELLOGG AVE., CONST. GRATE INLET, SPECIAL (2), 25.300m RT. INSTALL 375 mm X 23.7 m RCP (N)

543 STA. 4+775.000, @ KELLOGG AVE., CONST. GRATE INLET, SPECIAL (2), 27.168m RT. INSTALL 375 mm X 25.4 m RCP (N)

542 STA. 4+815.200, @ KELLOGG AVE., CONST. GRATE INLET, SPECIAL (2), 28.757m RT. INSTALL 375 mm X 50.2 m RCP (N)

521 STA. 4+815.200, @ KELLOGG AVE., CONST. PRECAST MANHOLE W/ ECCENTRIC CONE 22.054 m LT.. MANHOLE RING AND COVER SHALL BE IN SHOULDER INSTALL 375 mm X 2.0 m RCP (NW) \*\*  
\*\* Connect to existing pipe, which has been temporarily plugged. Remove temporary plug.

523 STA. 4+776.670, @ KELLOGG AVE., CONST. TYPE P (STD.) MANHOLE, 1.000 m RT. INSTALL 600 mm X 19.9 m RCP (N)

Drawn by: J:\97546\FIELDCK\STORM\P09  
Plotted: SCALE 1:500



KANSAS DEPARTMENT OF TRANSPORTATION  
STORM SEWER  
KELLOGG AND RAMPS J, K & L  
STA. 4+600 to STA. 5+000