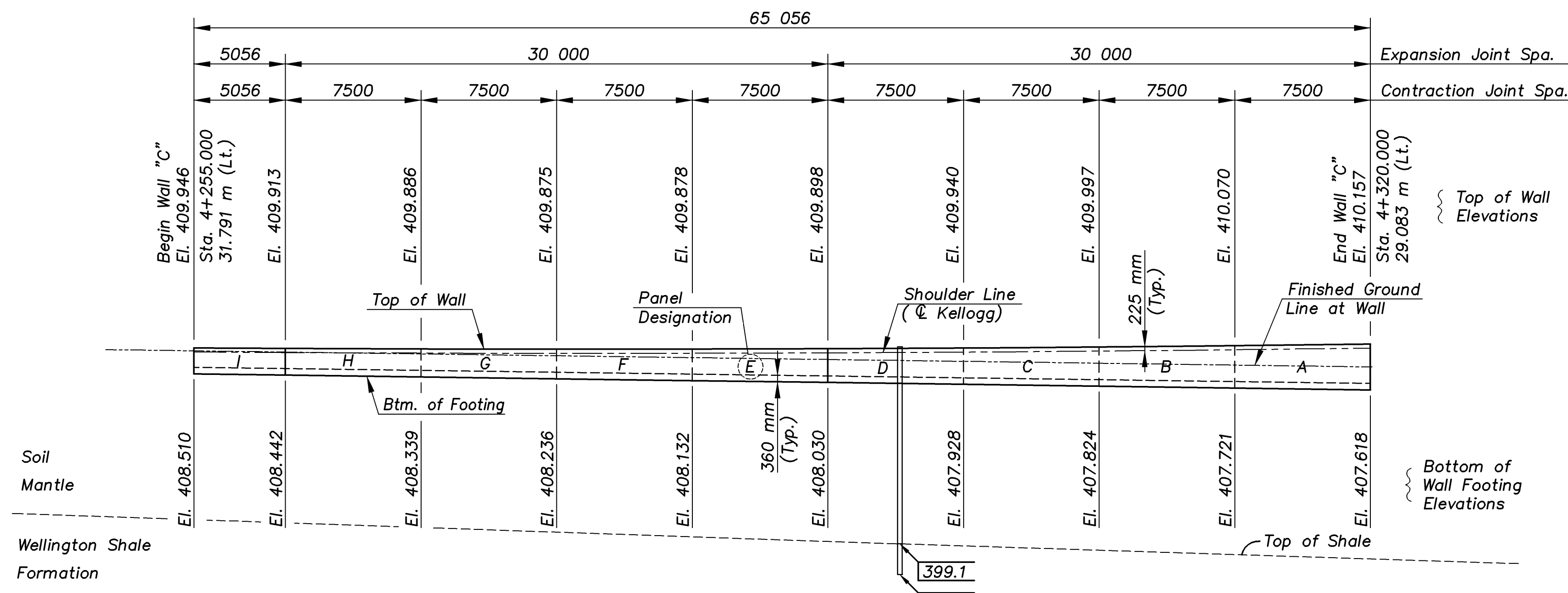
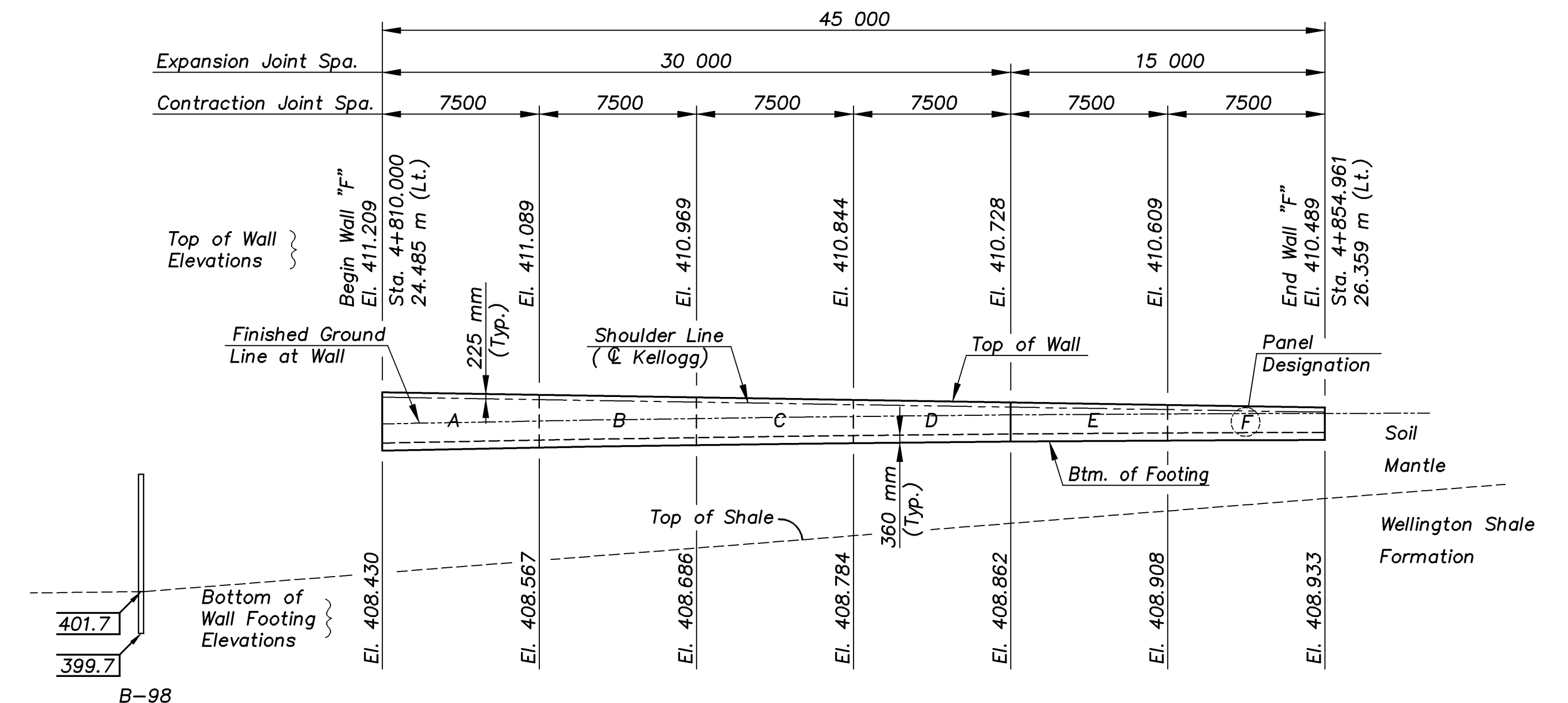


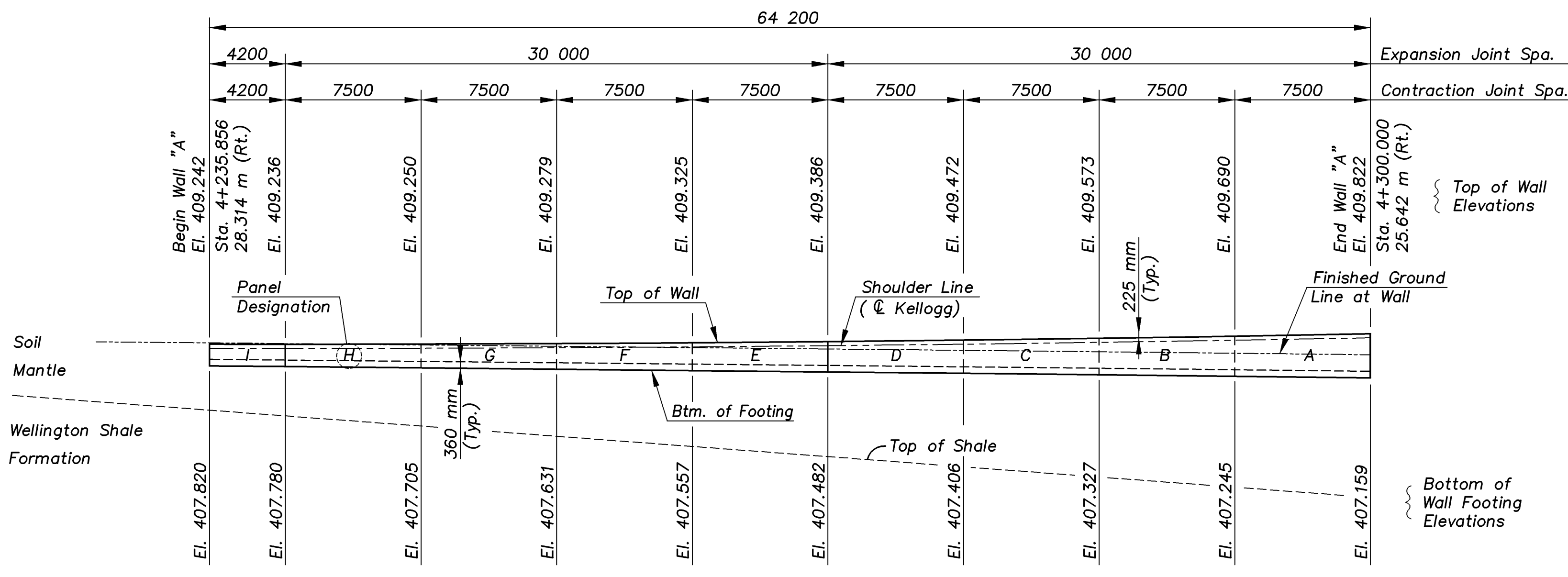
STATE	PROJECT NO.	YEAR	SHEET NO.	TOTAL SHEETS
KANSAS	54-87 K-8258-08	2005	65	223



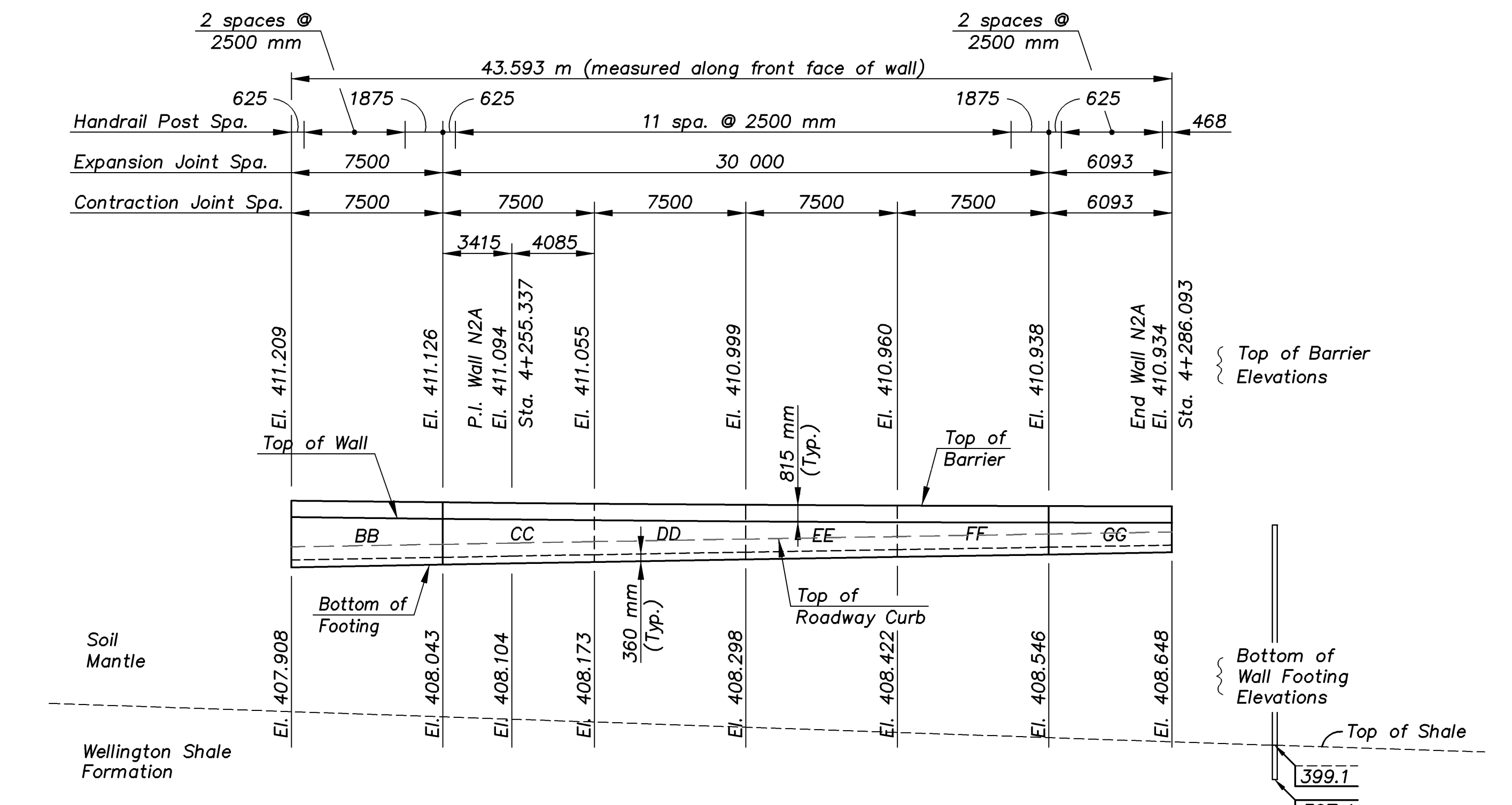
ELEVATION OF CANTILEVERED RETAINING WALL "C" (LT.)



ELEVATION OF CANTILEVERED RETAINING WALL "F" (LT.)



ELEVATION OF CANTILEVERED RETAINING WALL "A" (RT.)



ELEVATION OF CANTILEVERED RETAINING WALL "N2A" (RT.)

MISC-WALLS DETAILS 1:200

KANSAS DEPARTMENT OF TRANSPORTATION

CANTILEVERED RETAINING WALLS
(EASTERN AVENUE BRIDGE)

Proj. No. 54-87 K-8258-08 SEDGWICK COUNTY

CFS
Cook, Flatt & Strobel
ENGINEERS, P. A.

DESIGNED	R.S.C.	SCALE	Noted
DETAILED	T.R.G.	DATE	
QUANTITIES	T.R.G.	SHEET	4 OF 7