

STATE	PROJECT NO.	YEAR	SHEET NO.	TOTAL SHEETS
KANSAS	54-87 K-8258-08	2005	66	223

### WALL "A" REINFORCING STEEL SUMMARY

PANEL	MARK	NO.	MARK	NO.	MARK	NO.	MARK	NO.	MARK	NO.
A	WH1	21	WBV1	25	WV1	25				
B	WH1	20	WBV2	25	WV1	25				
C	WH1	19	WBV3	25	WV2	25				
D	WH1	18	WBV4	25	WV2	25				
E	WH1	17	WBV5	25	WV3	25				
F	WH1	16	WBV6	25	WV3	25				
G	WH1	15	WBV7	25	WV4	25				
H	WH1	14	WBV8	25	WV4	25				
I	WH2	14	WBV9	14	WV4	14				

### WALL "C" REINFORCING STEEL SUMMARY

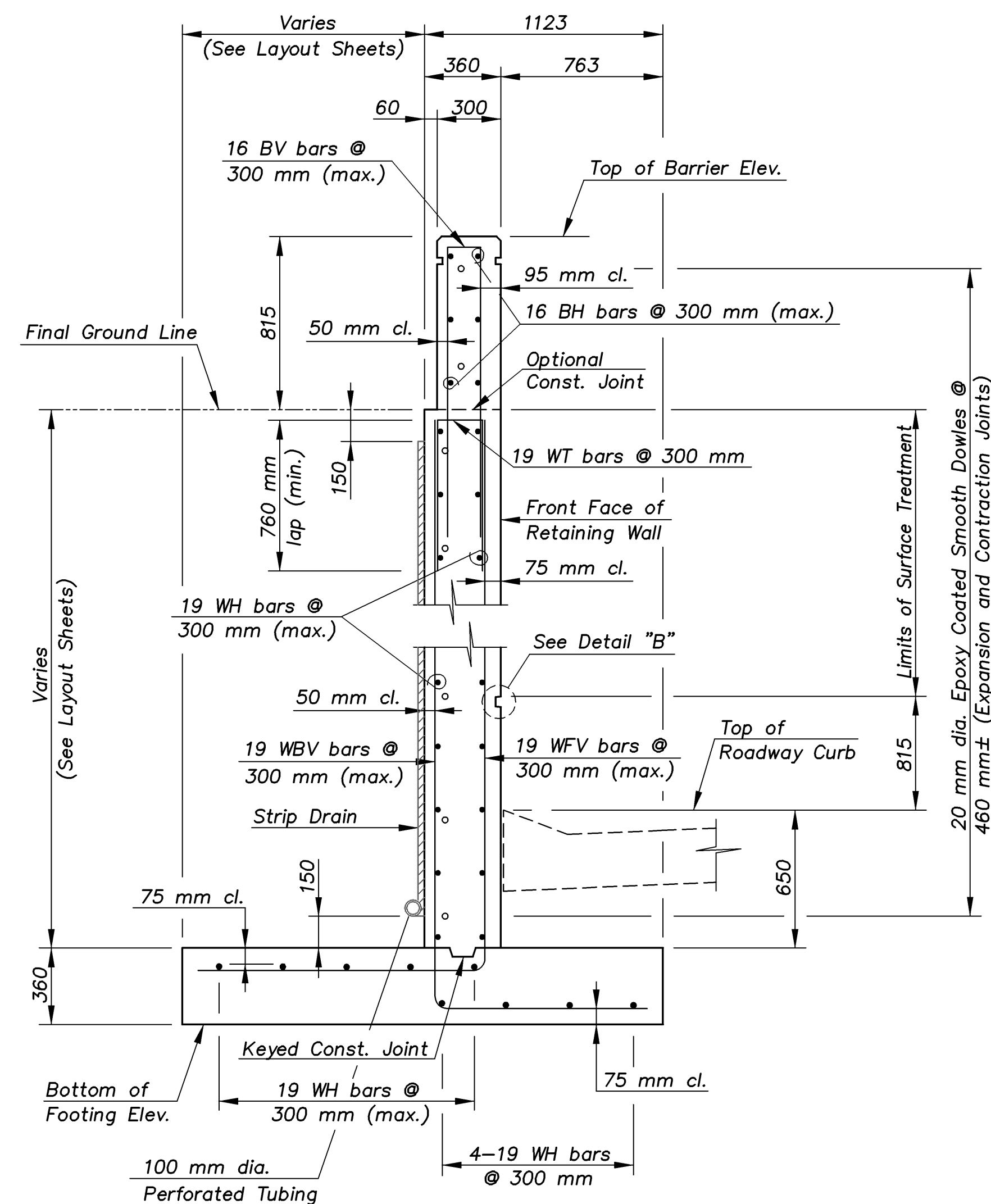
PANEL	MARK	NO.	MARK	NO.	MARK	NO.	MARK	NO.	MARK	NO.
A	WH1	21	WBV1	25	WV1	25				
B	WH1	20	WBV2	25	WV1	25				
C	WH1	18	WBV3	25	WV2	25				
D	WH1	18	WBV4	25	WV2	25				
E	WH1	16	WBV5	25	WV3	25				
F	WH1	16	WBV6	25	WV3	25				
G	WH1	15	WBV7	25	WV4	25				
H	WH1	14	WBV8	25	WV4	25				
I	WH2	14	WBV9	17	WV4	17				

### WALL "F" REINFORCING STEEL SUMMARY

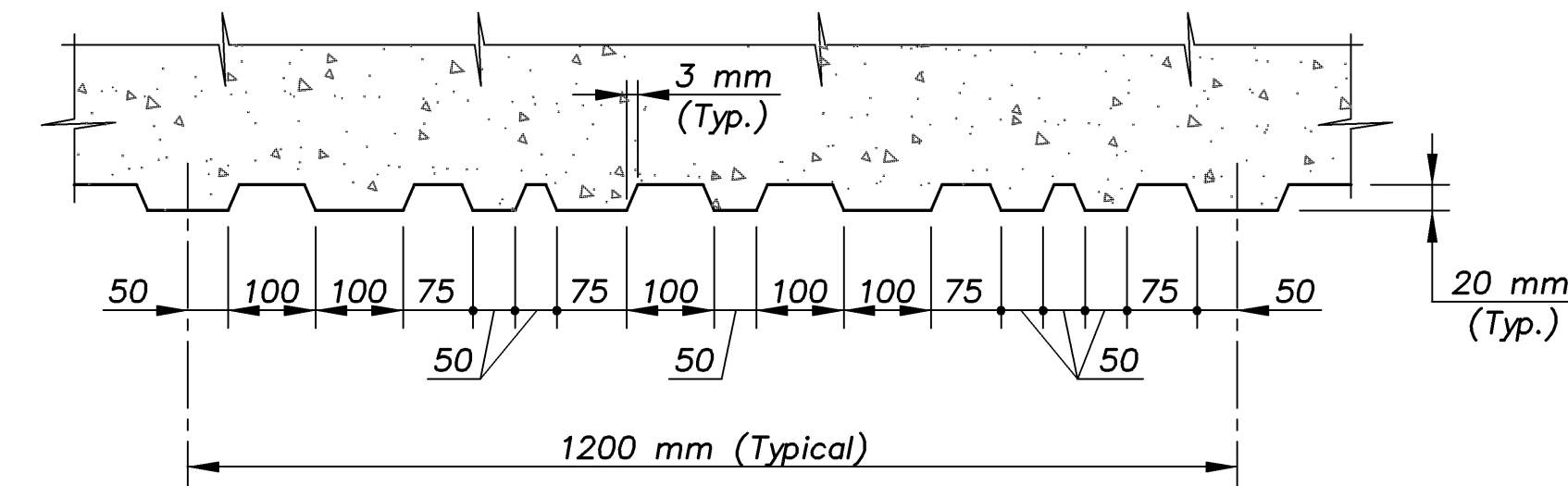
PANEL	MARK	NO.	MARK	NO.	MARK	NO.	MARK	NO.	MARK	NO.
A	WH1	20	WBV1	25	WV1	25				
B	WH1	19	WBV2	25	WV1	25				
C	WH1	17	WBV3	25	WV2	25				
D	WH1	16	WBV4	25	WV2	25				
E	WH1	15	WBV5	25	WV3	25				
F	WH1	13	WBV6	25	WV4	25				

### WALL "N2A" REINFORCING STEEL SUMMARY

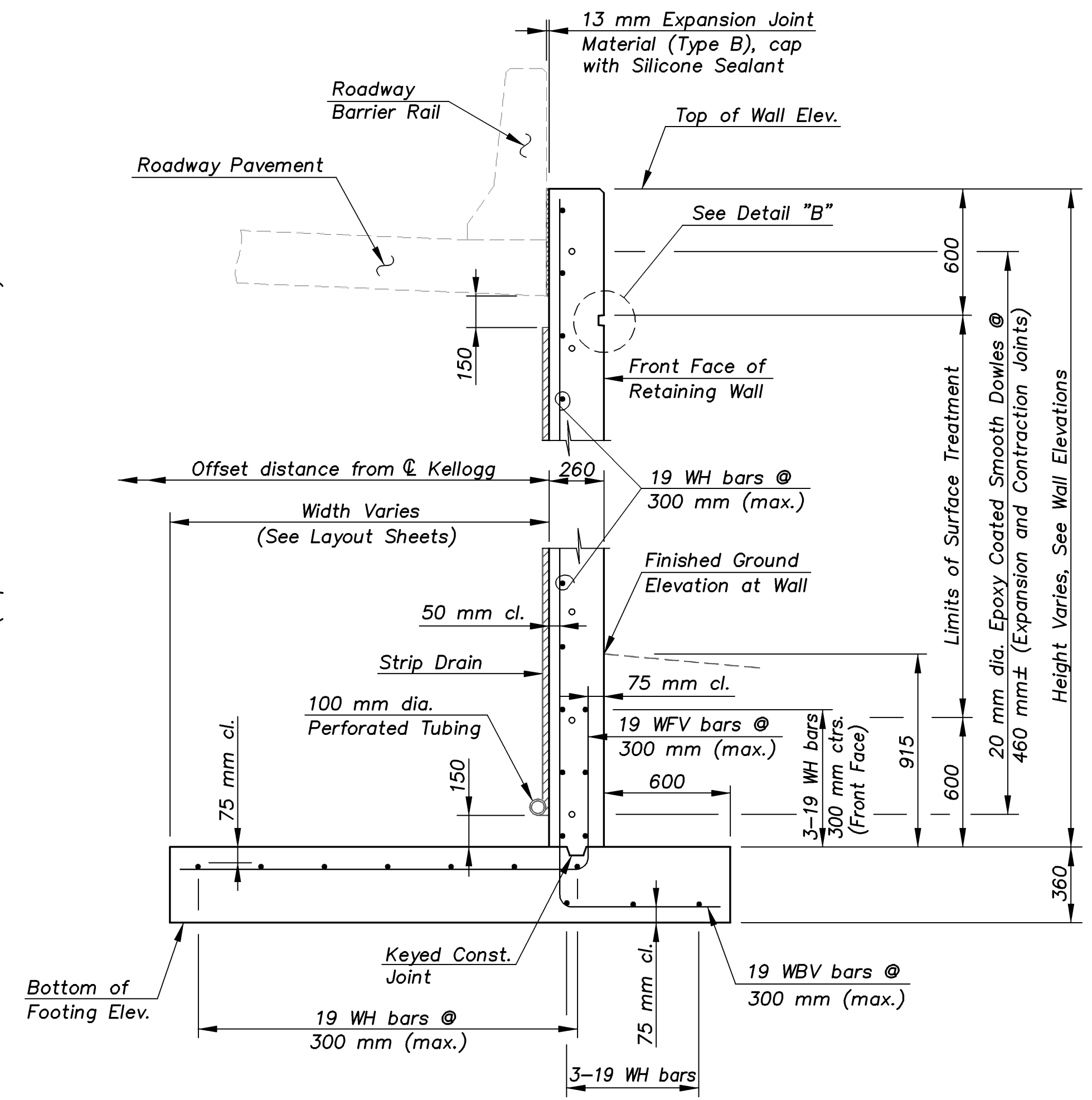
PANEL	MARK	NO.	MARK	NO.	MARK	NO.	MARK	NO.	MARK	NO.	MARK	NO.
BB	WH1	24	WBV4	25	WV4	25	WT2	25	BH1	6	BV1	25
CC	WH1	23	WBV5	25	WV5	25	WT2	25	BH1	6	BV1	25
DD	WH1	21	WBV6	25	WV6	25	WT2	25	BH1	6	BV1	25
EE	WH1	18	WBV7	25	WV7	25	WT3	25	BH1	6	BV1	25
FF	WH1	18	WBV8	25	WV8	25	WT3	25	BH1	6	BV1	25
GG	WH2	16	WBV9	21	WV9	21	WT3	21	BH2	6	BV1	21



**TYPICAL RETAINING WALL SECTION**  
WALL "N2A" (PANELS BB THRU GG)

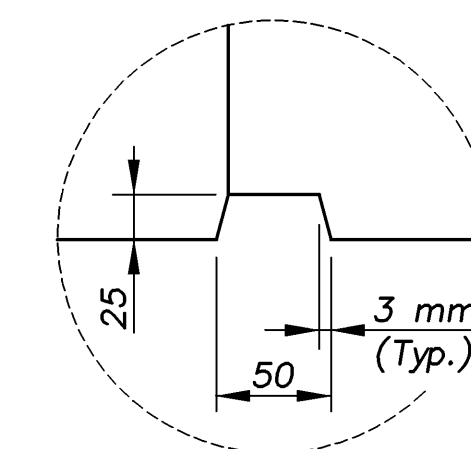


**SURFACE TREATMENT DETAIL**  
(Repeating High/Low Board Pattern)

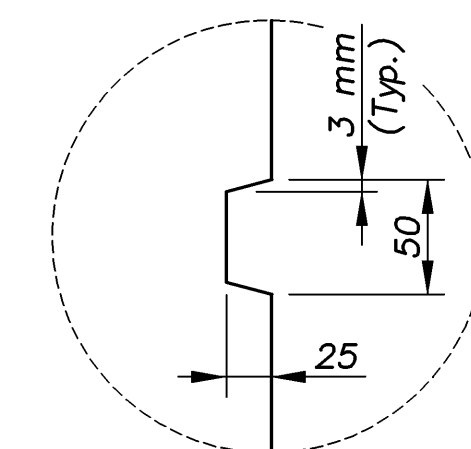


**TYPICAL RETAINING WALL SECTION**

WALL "A" (PANELS A THRU I)  
WALL "C" (PANELS A THRU I)  
WALL "F" (PANELS A THRU F)

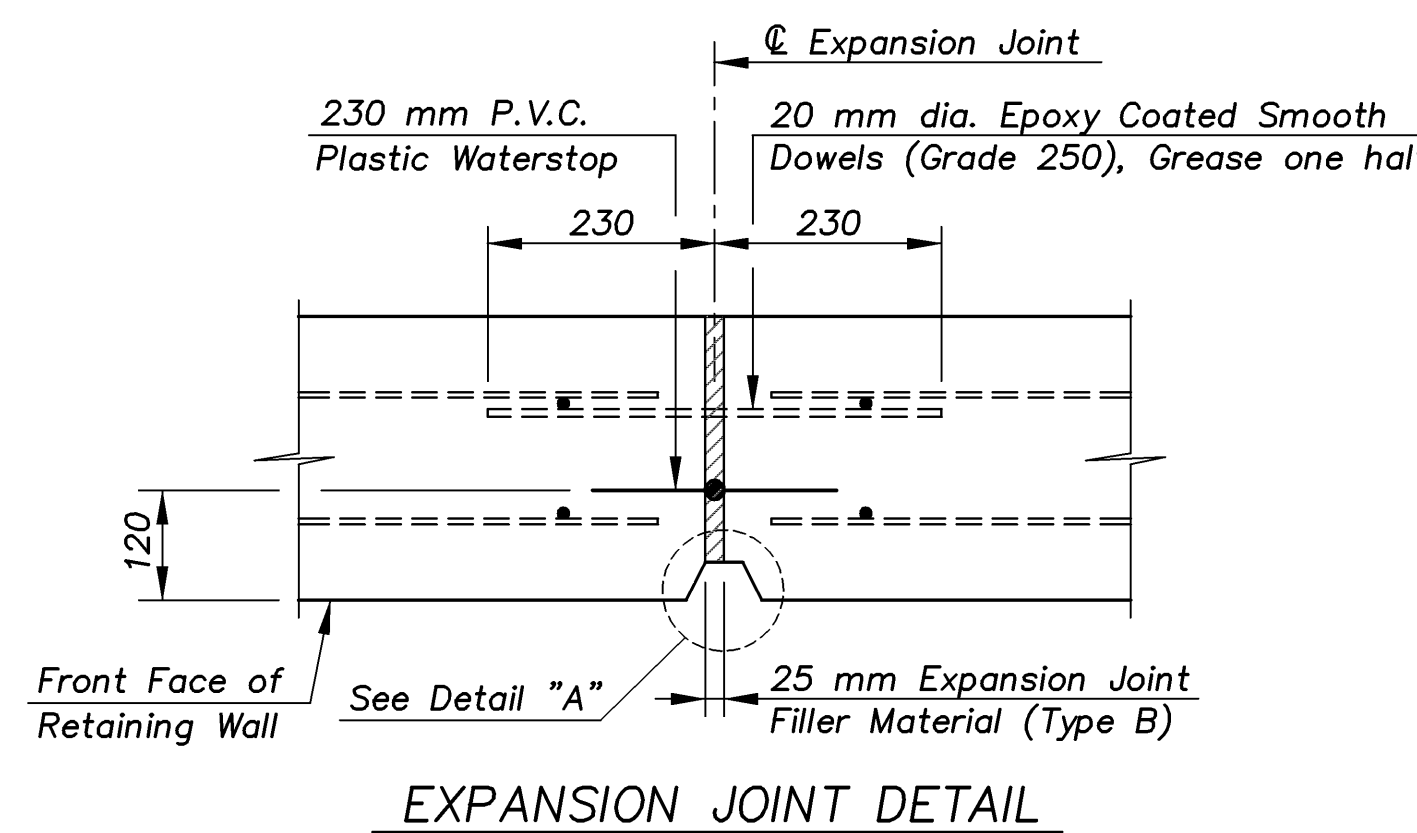


**DETAIL "A"**

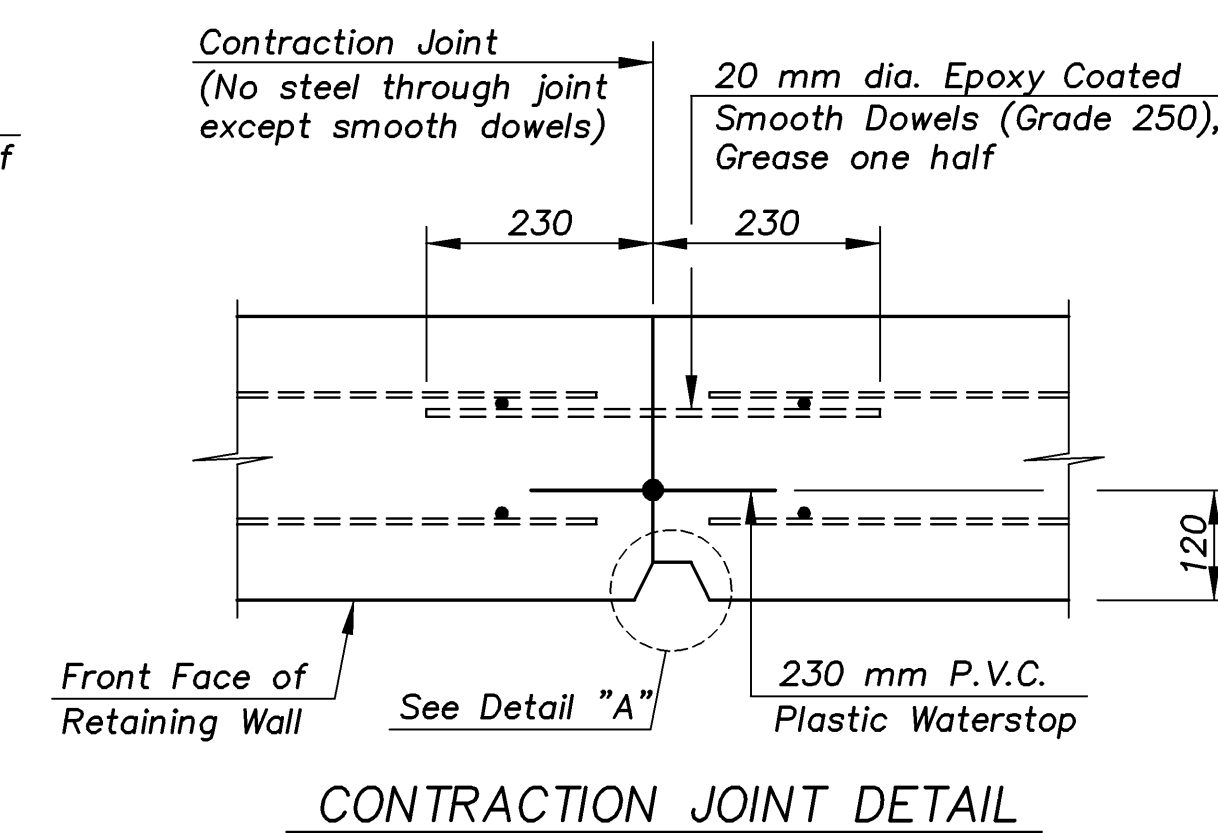


**DETAIL "B"**

**NOTE:** Expansion and Contraction Joints shall extend from top of the footing to the top of wall or barrier. A minimum of one day must elapse between placement of wall concrete on adjacent sides of contraction joint.



**EXPANSION JOINT DETAIL**



**CONTRACTION JOINT DETAIL**

KANSAS DEPARTMENT OF TRANSPORTATION

## CANTILEVERED RETAINING WALLS (EASTERN AVENUE BRIDGE)

DESIGNED R.S.C. SCALE Noted

DETAILED T.R.G. DATE

QUANTITIES T.R.G. SHEET 5 OF 7

**Cook, Flatt & Strobel**  
ENGINEERS, P. A.

Proj. No. 54-87 K-8258-08 SEDGWICK COUNTY