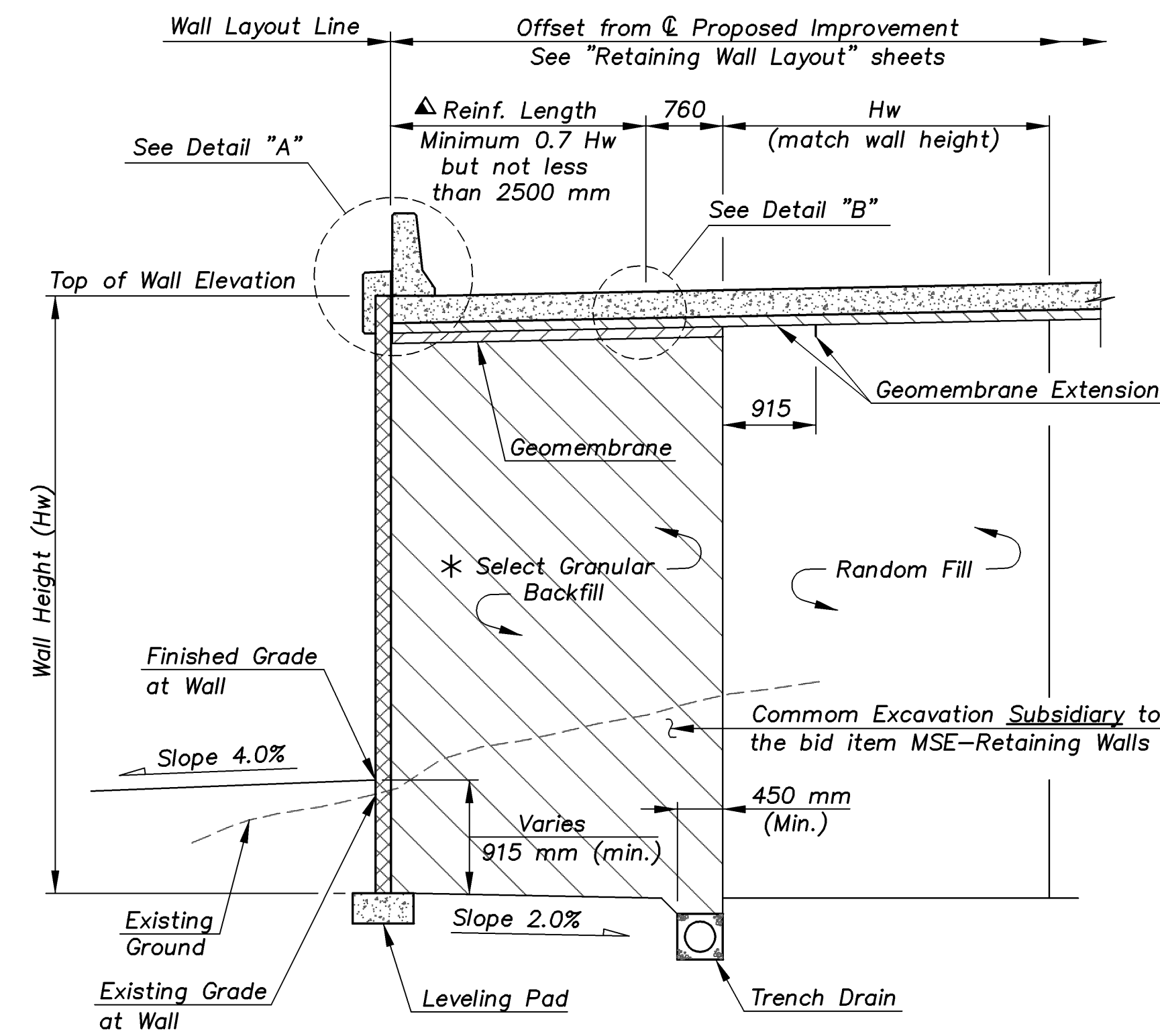


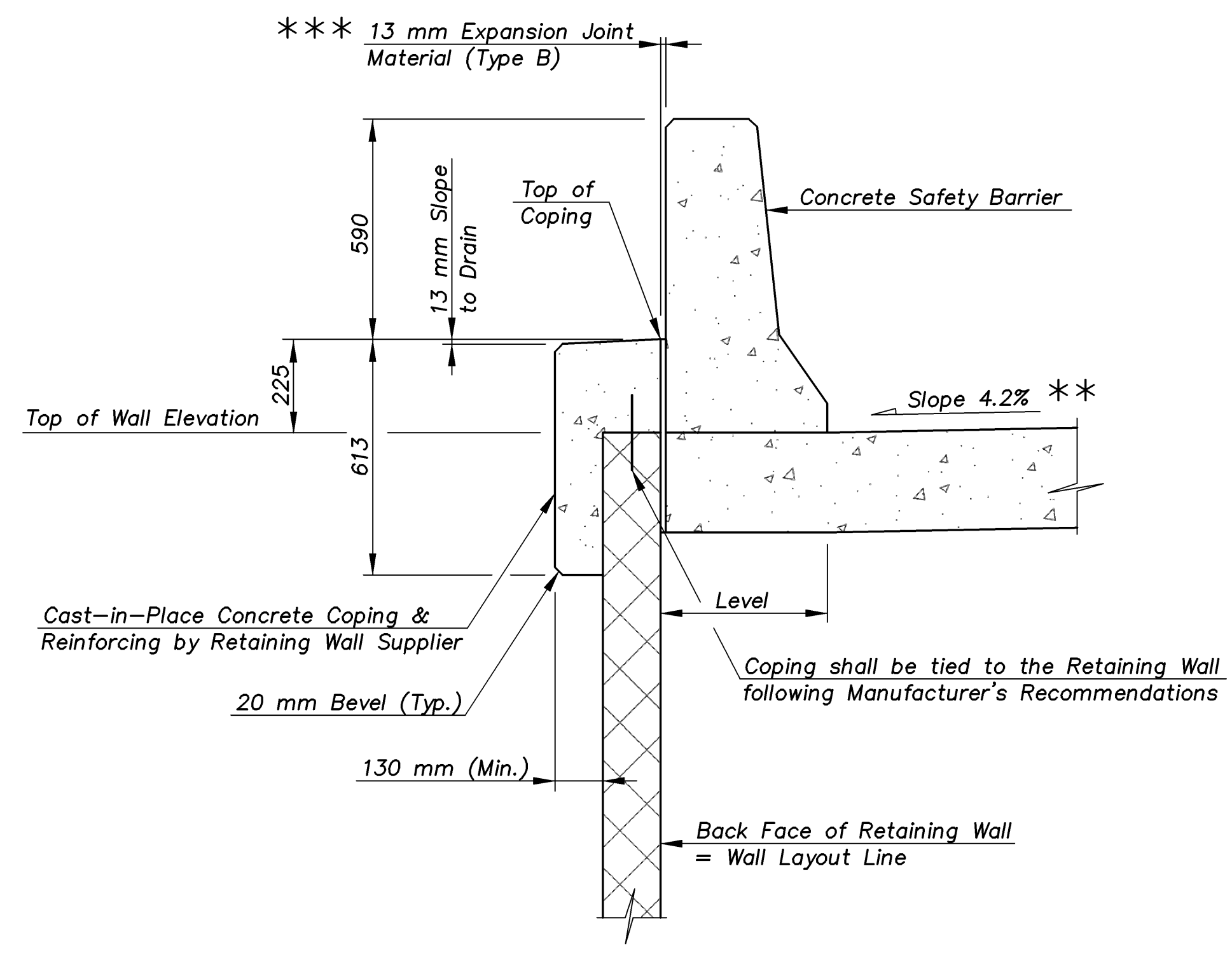
STATE	PROJECT NO.	YEAR	SHEET NO.	TOTAL SHEETS
KANSAS	54-87 K-8258-08	2005	70	223

E.F. INDICATES EACH FACE.
N.F. INDICATES NEAR FACE.
F.F. INDICATES FAR FACE.

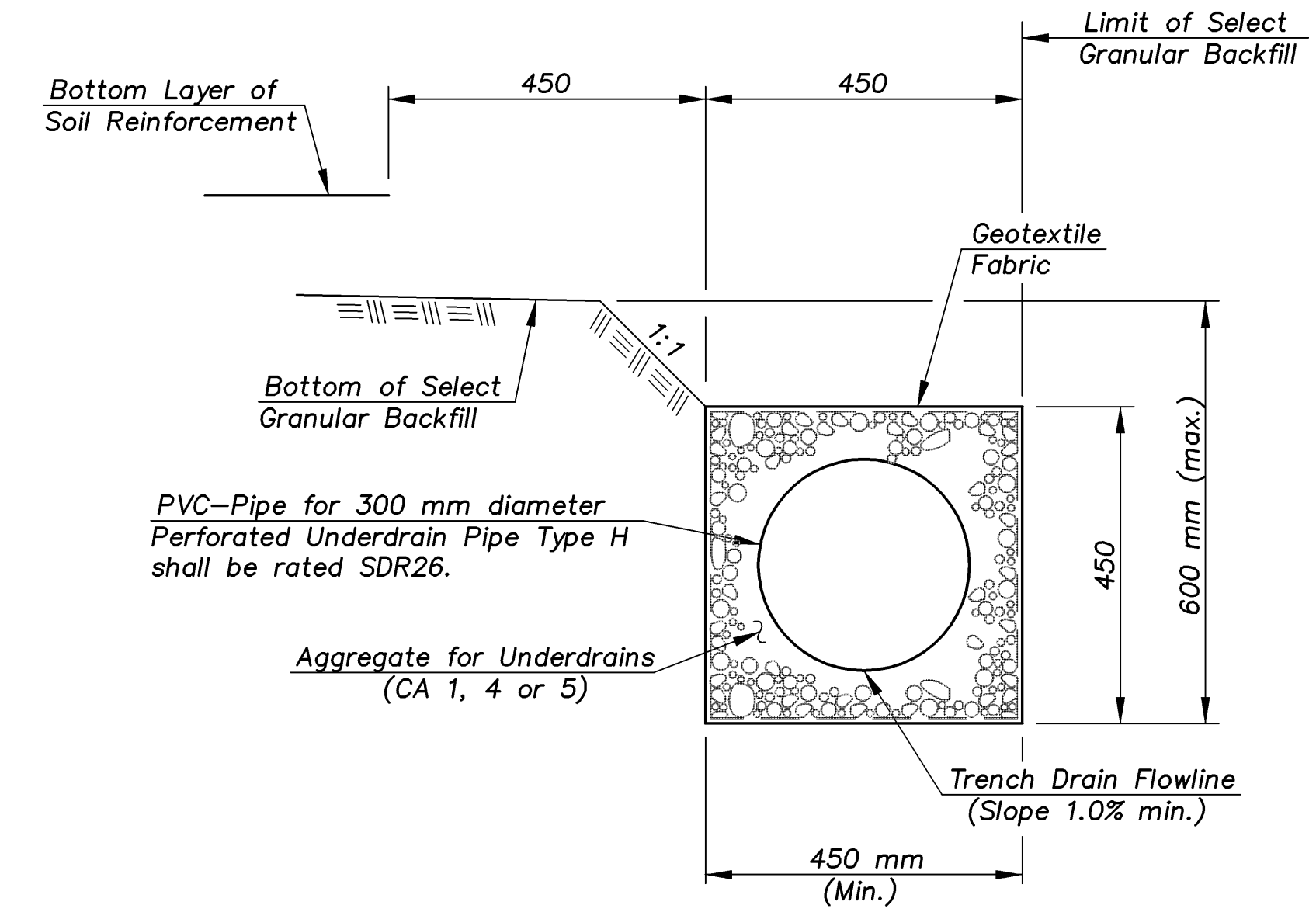


TYPICAL RETAINING WALL SECTION

- * Provide 150 mm minimum layer of Select Granular Backfill above the top layer of soil reinforcement.
- ▲ Widths may vary according to Retaining Wall Manufacturer's details.
- ** Shoulder cross slope transitions from 4.2% to 2.0% through the Concrete Bridge Approach Slab.
- *** Cap with Silicone Sealant.

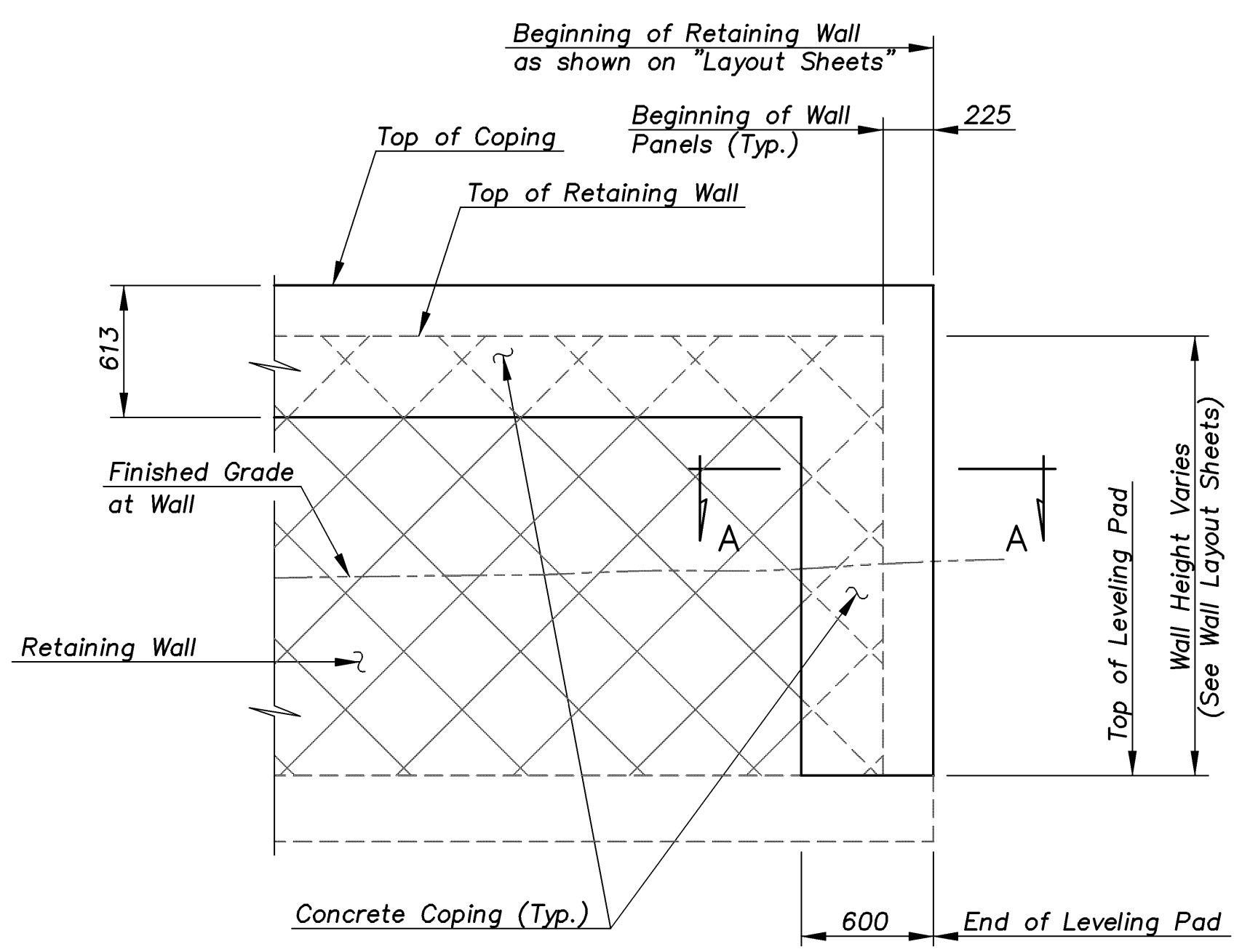


DETAIL "A"

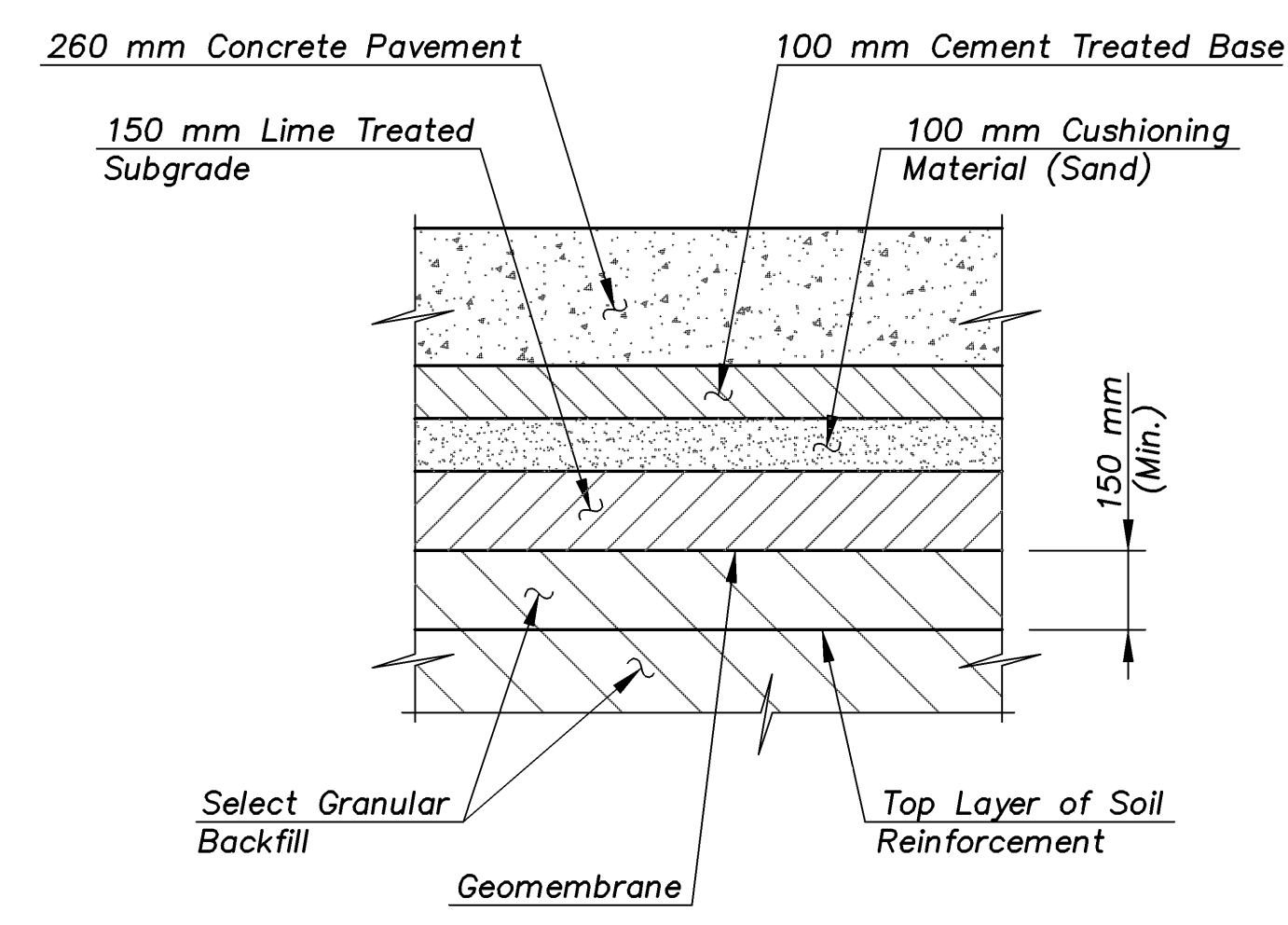


TRENCH DRAIN DETAILS

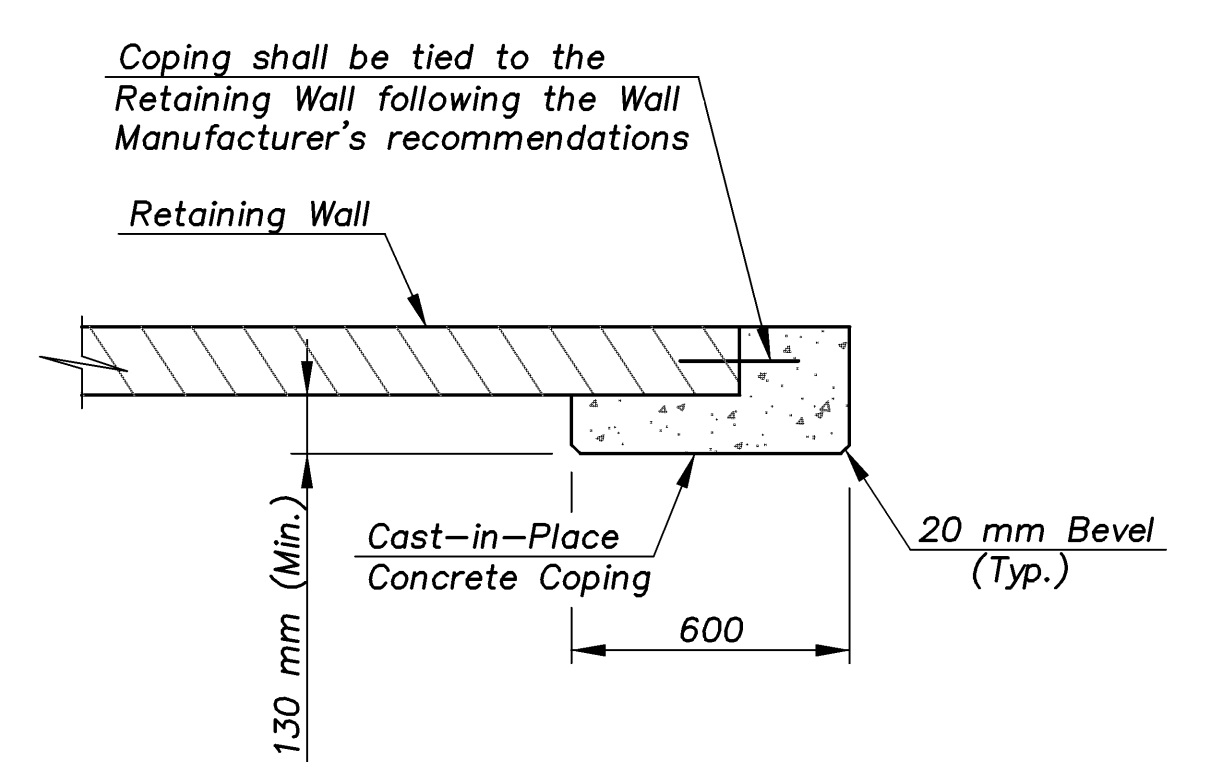
NOTES: The Geotextile Fabric for the trench drains shall conform to the requirements of the Standard Specifications. The aggregate shall be CA-1, 4 or 5. Construction of trench drains including the outlet pipes, flapgates and guide posts shall not be paid for directly, but shall be considered Subsidiary to the bid item "MSE-Retaining Walls".



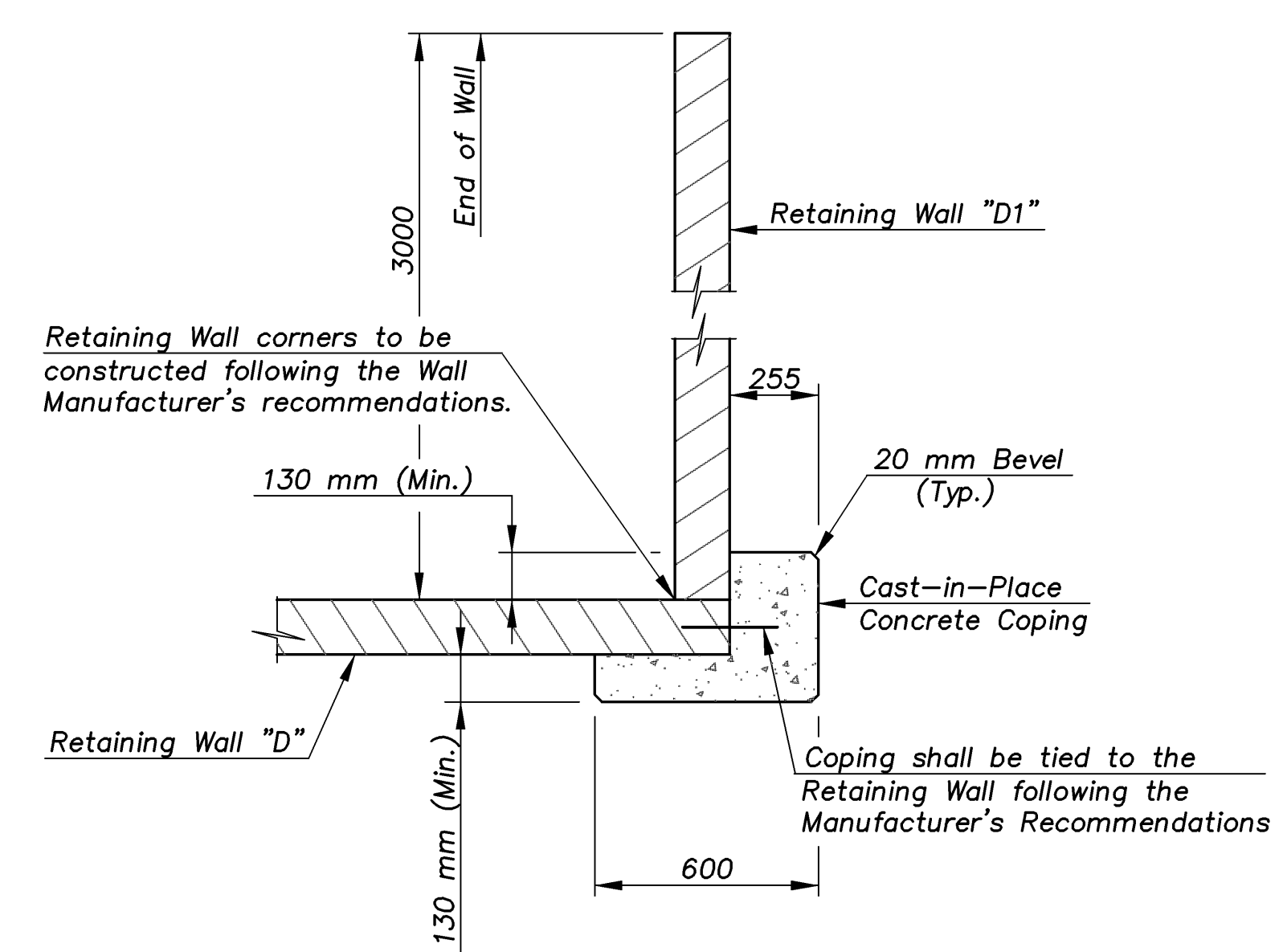
ELEVATION AT BEGINNING OF WALL



DETAIL "B"



SECTION A-A



SECTION A-A
(Wall "D" and "D1" Only)

MSE-WALL/DETAILS 1:100

KANSAS DEPARTMENT OF TRANSPORTATION		CFS Cook, Flatt & Strobel ENGINEERS, P. A.
RETAINING WALL DETAILS (EASTERN AVENUE BRIDGE)		
DESIGNED R.S.C.	SCALE Varies	Proj. No. 54-87 K-8258-08 SEDGWICK COUNTY SHEET 2 OF 8
DETAILED T.R.G.	DATE	
QUANTITIES T.R.G.	DATE	