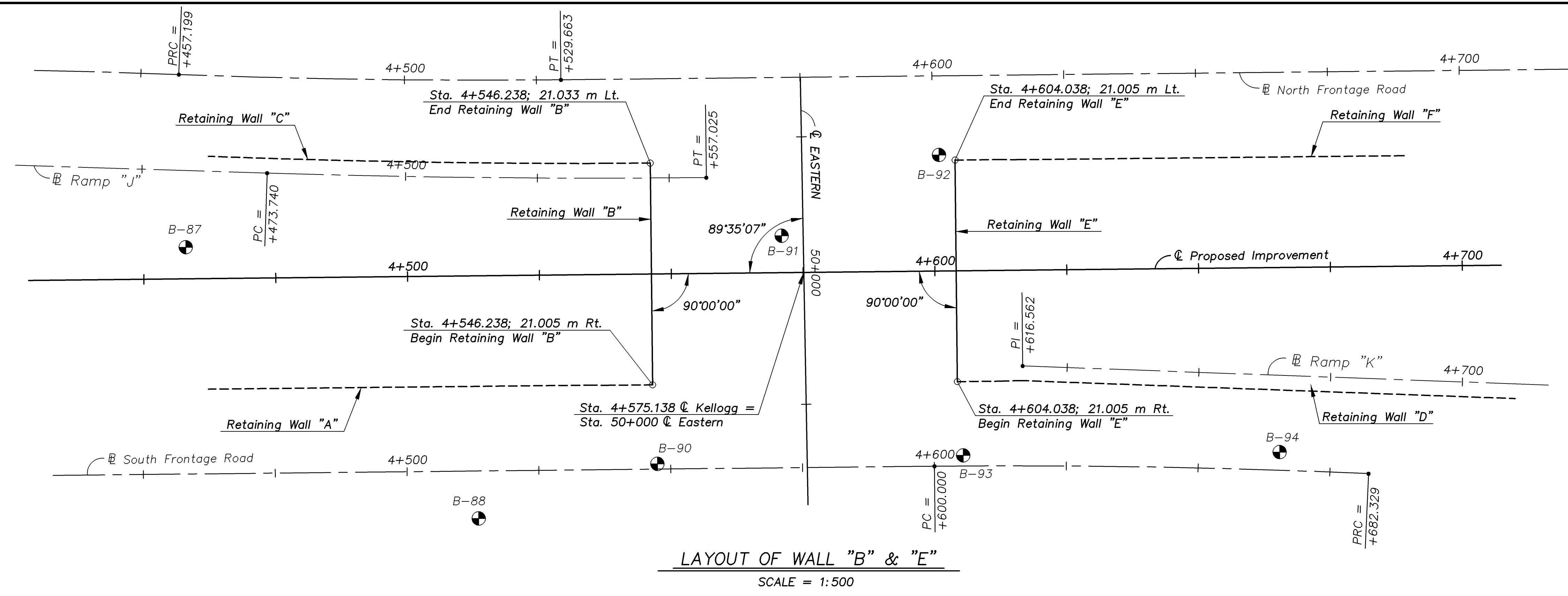
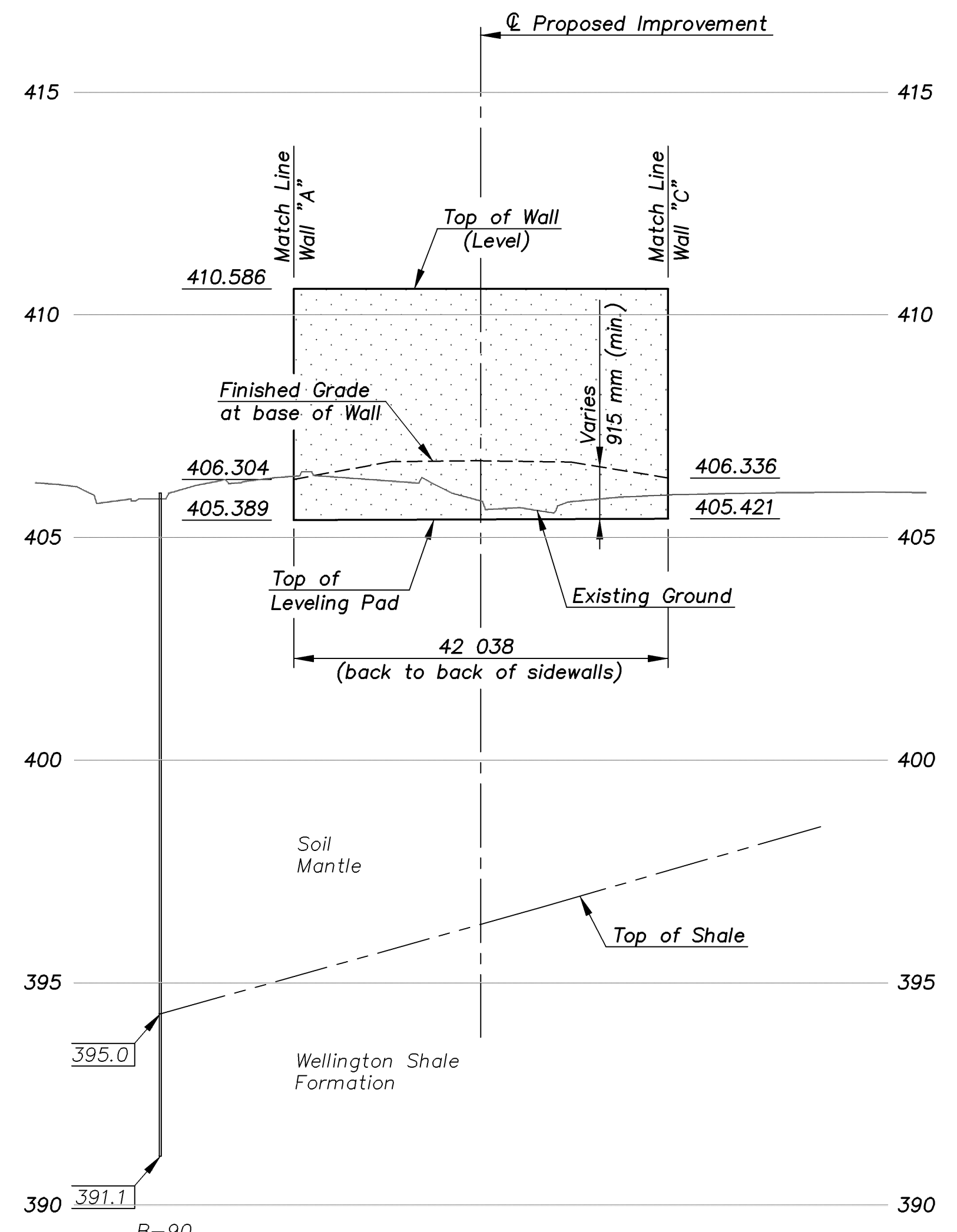


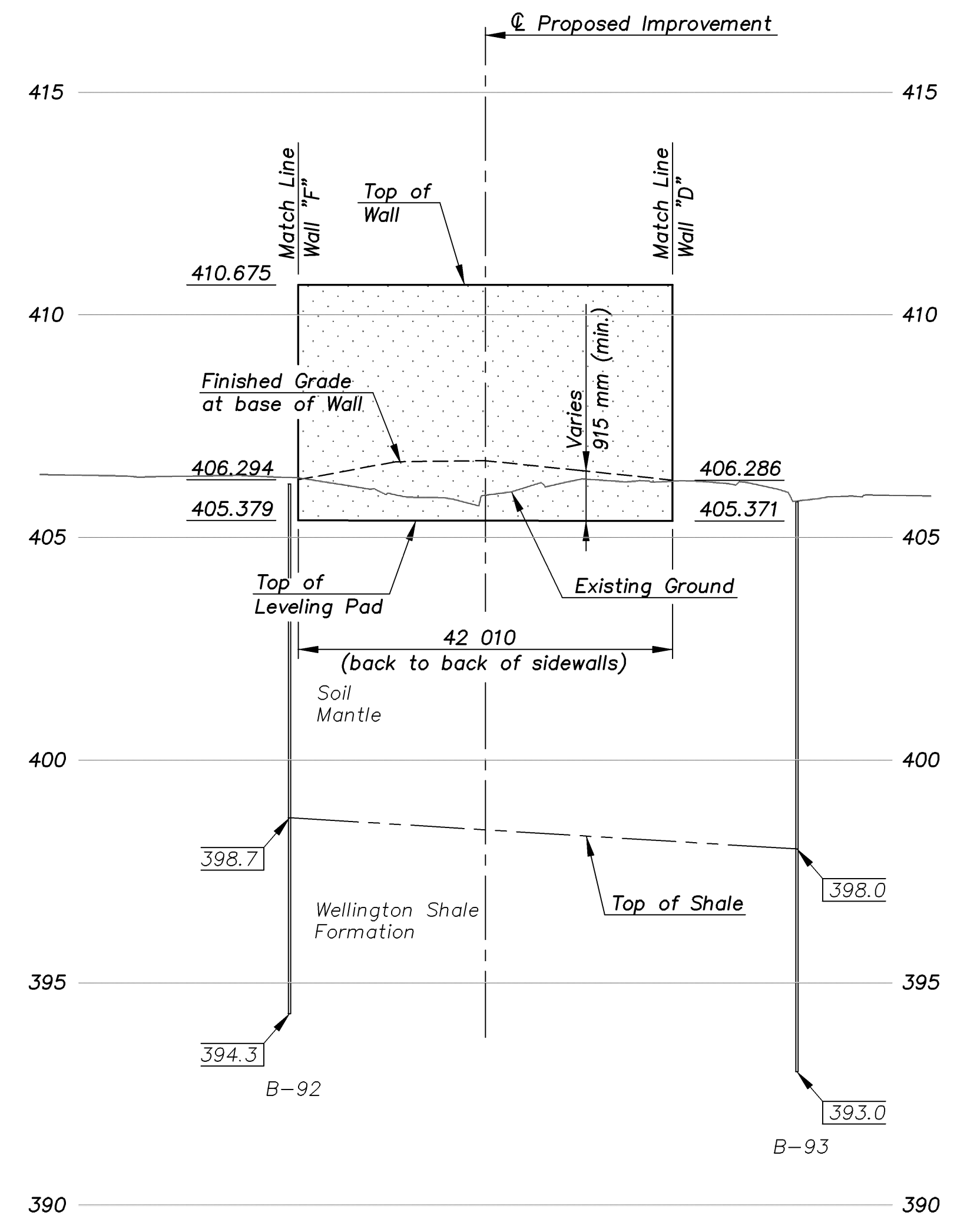
| STATE | PROJECT NO. | YEAR | SHEET NO. | TOTAL SHEETS |
|--------|-----------------|------|-----------|--------------|
| KANSAS | 54-87 K-8258-08 | 2005 | 73 | 223 |



LAYOUT OF WALL "B" & "E"
SCALE = 1:500



PROFILE OF WALL "B"
SCALE = 1:500 Horizontal
1:100 Vertical



PROFILE OF WALL "E"
SCALE = 1:500 Horizontal
1:100 Vertical

- NOTES:**
1. Stationing is along CL Proposed Improvement. Coordinates and Stationing offsets shown are to the back face of the Retaining Wall.
 2. Vertical curves shall be used on the coping to smooth out angle joints in the top of the retaining walls.
 3. The retaining wall leveling pad is shown for illustration only. Wall supplier shall determine actual leveling pad geometry and elevation.
 4. For typical wall sections and details see "Retaining Wall Details" sheets.

KANSAS DEPARTMENT OF TRANSPORTATION

RETAINING WALL LAYOUT
WALL "B" & "E"
EASTERN AVENUE BRIDGE

CFS
Cook, Flatt & Strobel
ENGINEERS, P. A.

| | | | |
|------------|--------|-------|--------|
| DESIGNED | R.S.C. | SCALE | 1:500 |
| DETAILED | T.R.G. | DATE | |
| QUANTITIES | T.R.G. | SHEET | 5 OF 8 |

Proj. No. 54-87 K-8258-08 SEDGWICK COUNTY

MSE-WALL LAYOUT 1:500