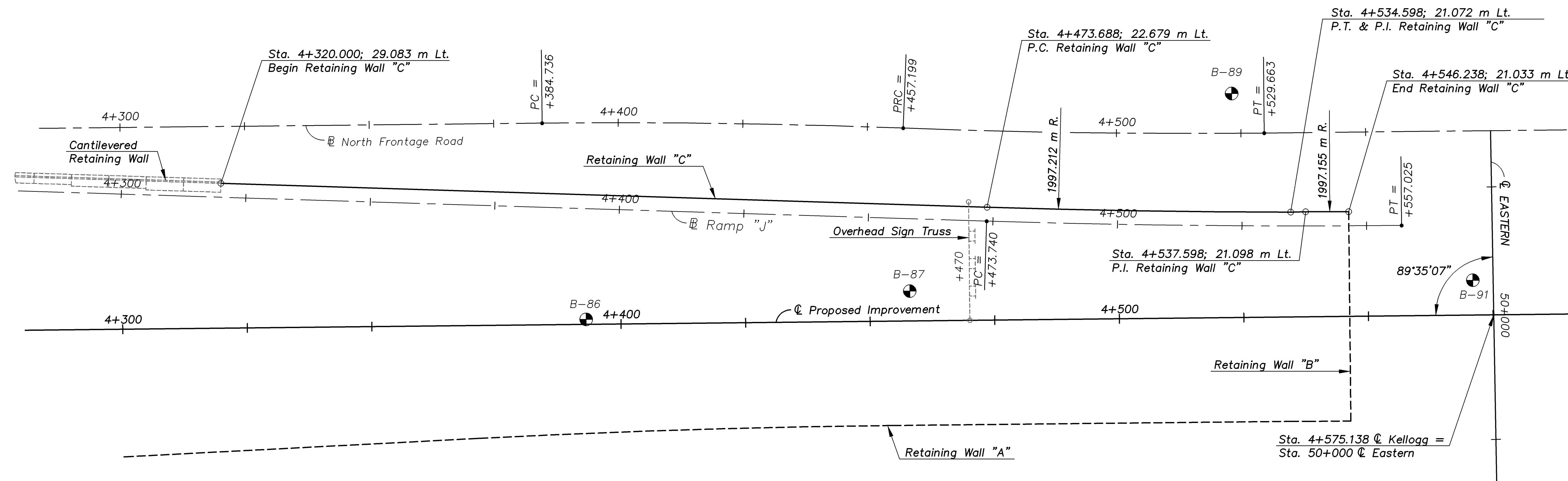
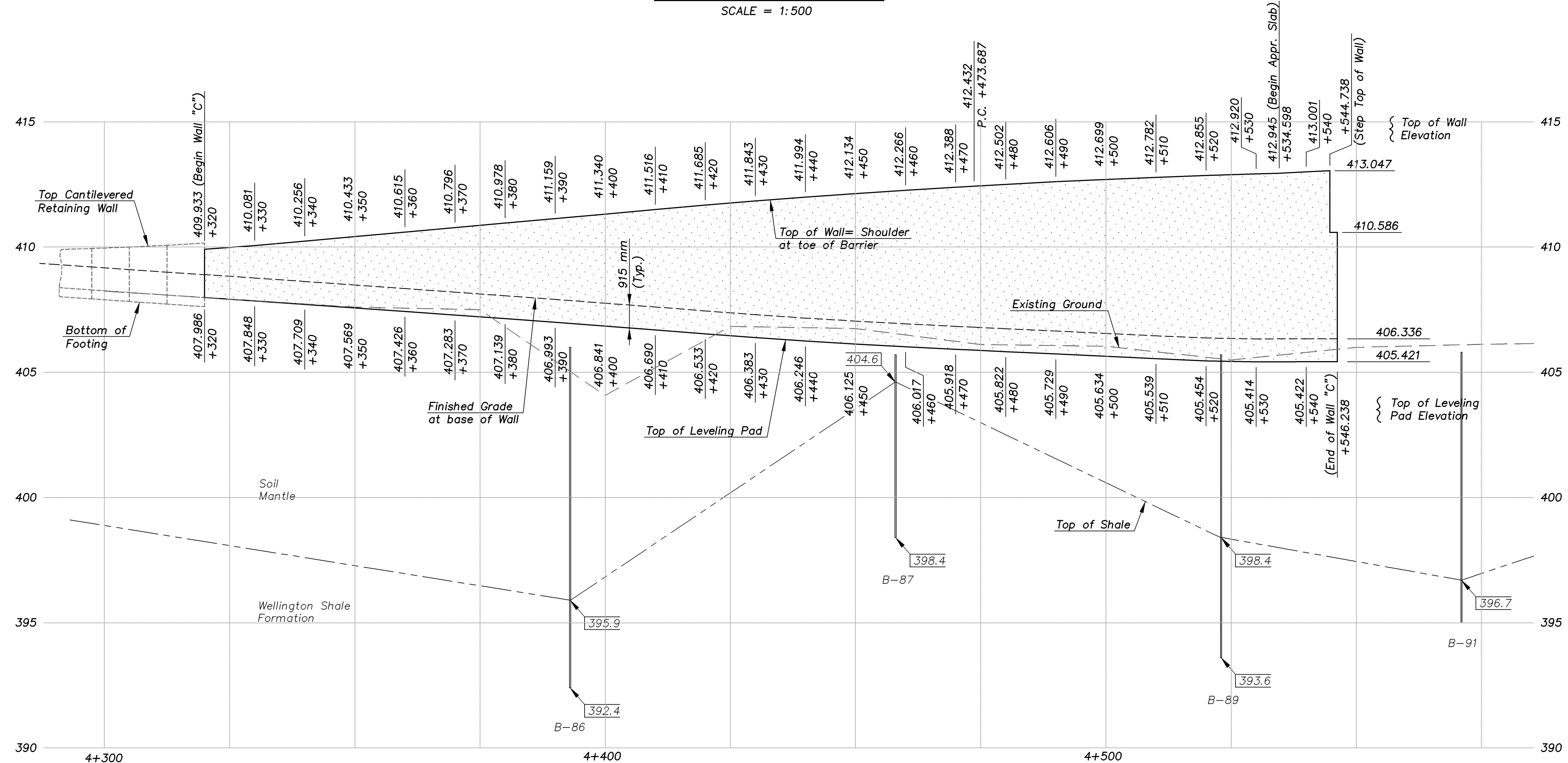


STATE	PROJECT NO.	YEAR	SHEET NO.	TOTAL SHEETS
KANSAS	54-87 K-8258-08	2005	74	223



LAYOUT OF WALL "C"
SCALE = 1:500



PROFILE OF WALL "C"
SCALE = 1:500 Horizontal
1:100 Vertical

- NOTES:
1. Stationing is along @ Proposed Improvement. Coordinates and Stationing offsets shown are to the back face of the Retaining Wall.
 2. Vertical curves shall be used on the coping to smooth out angle joints in the top of the retaining walls.
 3. The retaining wall leveling pad is shown for illustration only. Wall supplier shall determine actual leveling pad geometry and elevation.
 4. For typical wall sections and details see "Retaining Wall Details" sheets.

KANSAS DEPARTMENT OF TRANSPORTATION

CFS
Cook, Flatt & Strobel
ENGINEERS, P. A.

RETAINING WALL LAYOUT
WALL "C"
EASTERN AVENUE BRIDGE

DESIGNED	R.S.C.	SCALE	1:500
DETAILED	T.R.G.	DATE	
QUANTITIES	T.R.G.	SHEET	6 OF 8

Proj. No. 54-87 K-8258-08 SEDGWICK COUNTY

MSE-WALL LAYOUT 1:500