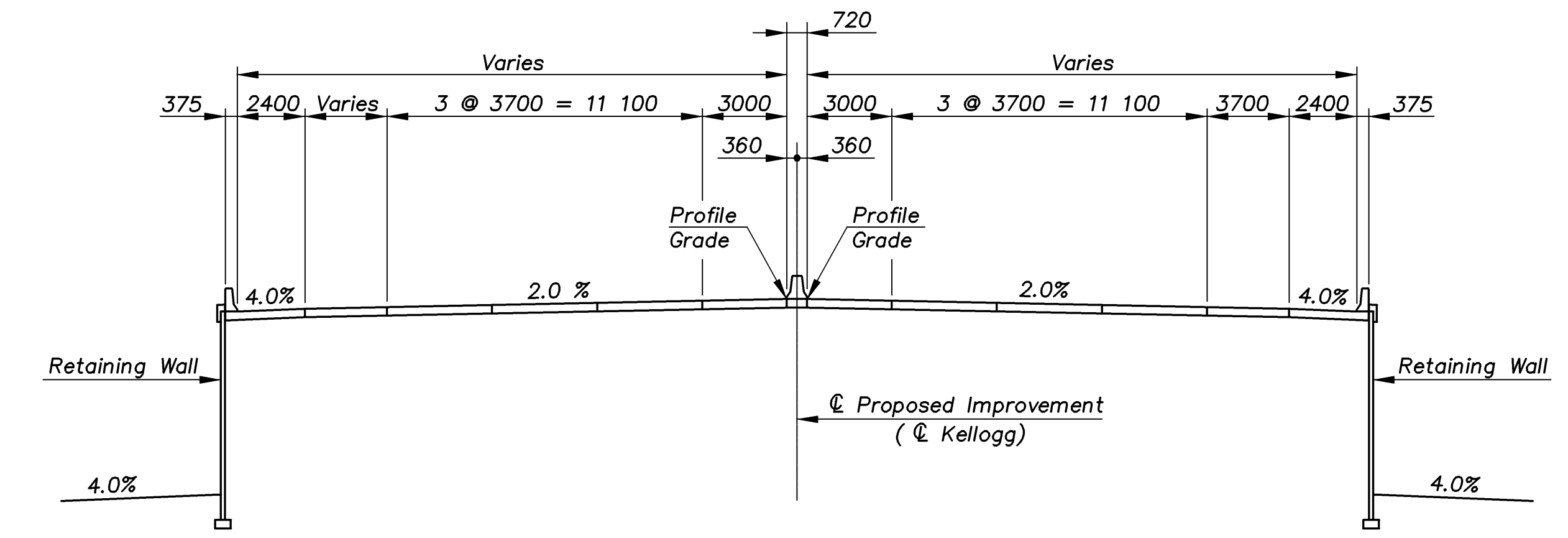
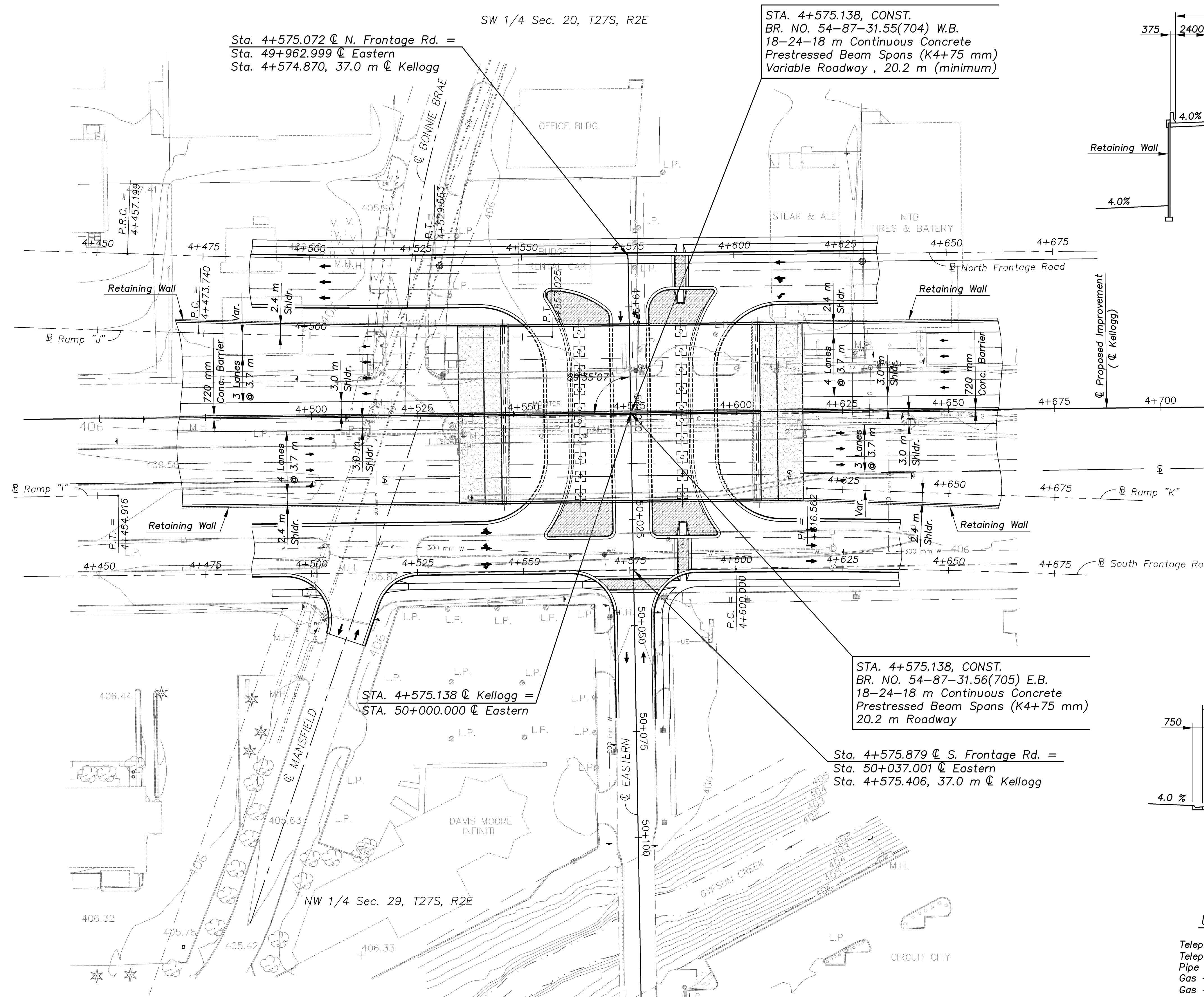


Ctr. Cor Sec. 29, T27S, R2E
 1. Cross Cut in Top of Curb at S.W. Cor of Driveway 12.181 m S.
 2. Cross Cut in Top of Curb at N.W. Cor of Driveway 4.321 m S.W.
 3. Cross Cut in Top of Curb 6.851 m W.
 4. S.W. Face of 0.15 m Pine Tree 1.000 m N.E.

Ctr. Cor Sec. 20, T27S, R2E
 1. Cross Cut in Top of Curb 9.330 m S.W.
 2. Cross Cut in Top of Curb 9.174 m S.E.
 3. Cross Cut in Top of Curb 10.172 m N.
 4. Cross Cut in Top of Curb 17.063 m N.E.

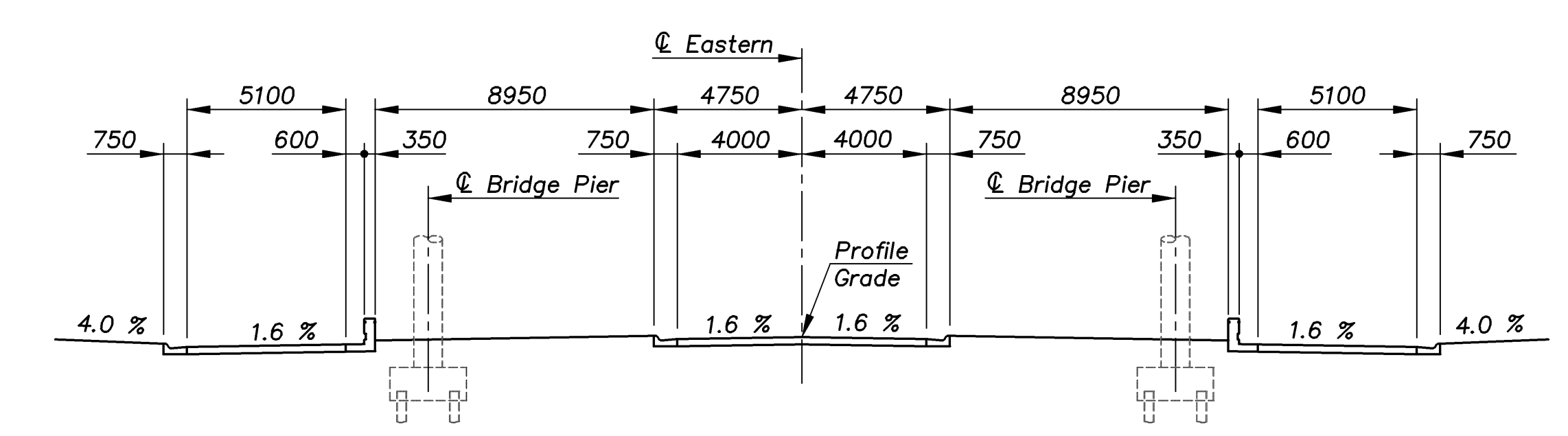
N. 1/4 Cor Sec. 29, T27S, R2E
 1. Cross Cut in Top of Curb at N. Side of Median 6.704 m S.E.
 2. Cross Cut in Top of Curb at N. Side of Median 5.096 m S.W.
 3. Cross Cut in Top of Curb at N. Side of Median 4.042 m S.
 4. Cross Cut in Top of Curb at N. Side of Bridge 11.227 m N.

STATE	PROJECT NO.	YEAR	SHEET NO.	TOTAL SHEETS
KANSAS	54-87 K-8258-08	2005	80	223



TYPICAL SECTION PROPOSED IMPROVEMENT
 (Looking Ahead Station)

Scale = 1:500
 Contour Interval = .5 m



TYPICAL SECTION PROPOSED EASTERN
 (Looking Ahead Station near Kellogg)

UTILITY OWNERS

- Telephone - Southwestern Bell
- Telephone - U.S. Sprint
- Pipe Line - Raytheon Aircraft
- Gas - Kansas Gas Service
- Gas - KPL
- Cable TV - Cox Communication
- Natural Gas - Williams Pipe Line
- Water - City of Wichita
- Power - KG&E

KANSAS DEPARTMENT OF TRANSPORTATION
 BR. NO. 54-87-31.55(704) W.B. STA. 4+575.138
 BR. NO. 54-87-31.56(705) E.B.
CONTOUR MAP
 KELLOGG AVENUE OVER EASTERN
 Proj. No. 54-87 K-8258-08 SEDGWICK COUNTY

CFS
 Cook, Flatt & Strobel
 ENGINEERS, P. A.
 DESIGNED R.S.C. SCALE 1:500
 DETAILED T.R.G. DATE
 QUANTITIES T.R.G. SHEET 2 OF 47

BM #23 - "□" Cut Top of Curb @ S.S.E. ECR of E. Ent. to Grandy's, 26.2 m S. of Q of S. Frontage Rd. & 4.7 m W. of Mansfield 66.0 m Rt. @ Sta. 4+497.648 Elev. = 405.812

BM #24 - "□" Cut Top W. Side of Sidewalk @ N. End Of Bridge Handrail 6.5 m W. of Q Ent. to Circuit City & 22.6 m S. of Q of S. Frontage Rd. 63.0 m Rt. @ Sta. 4+665.581 Elev. = 405.769

EASTERN/CONTOUR 1:500