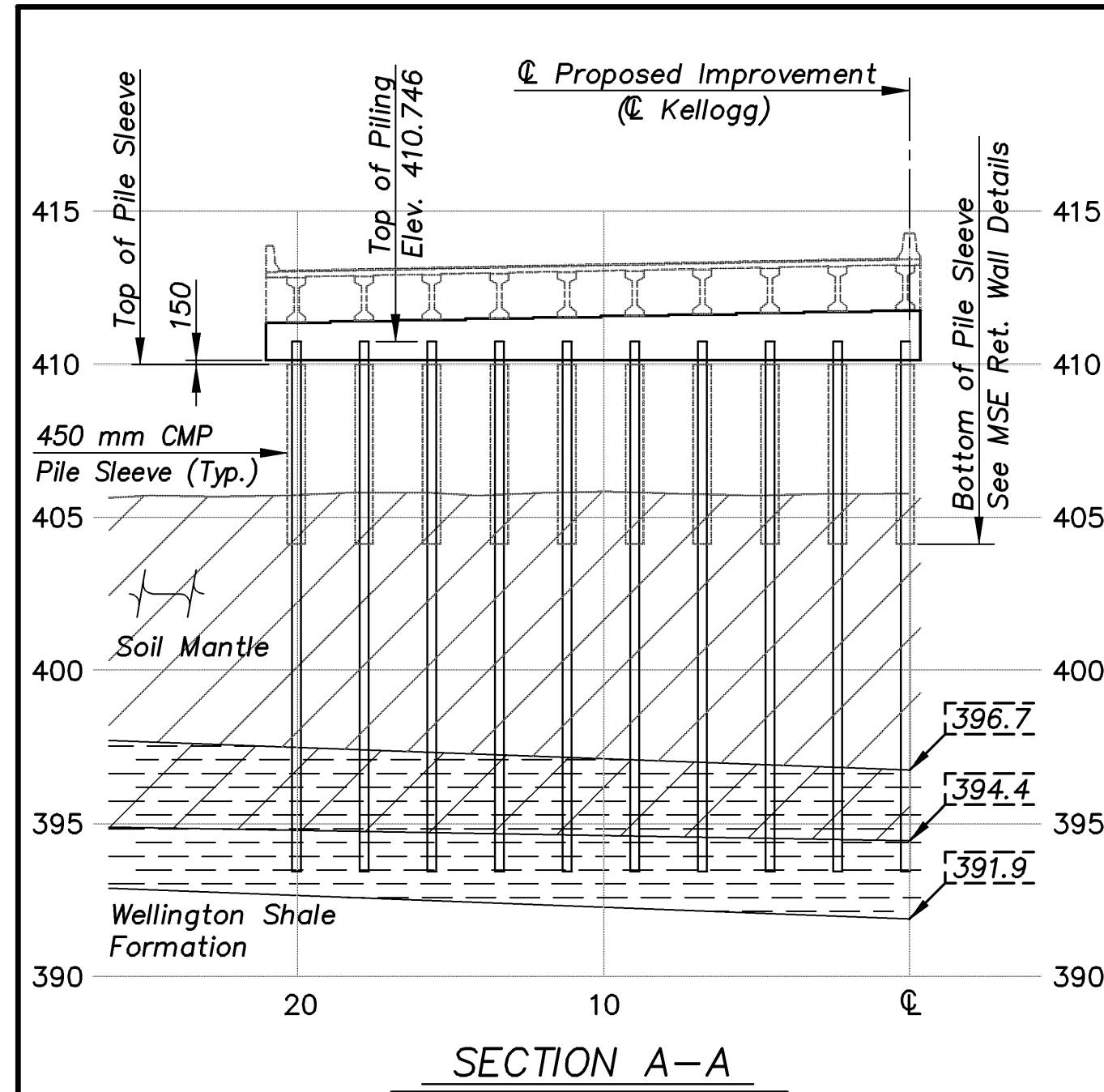
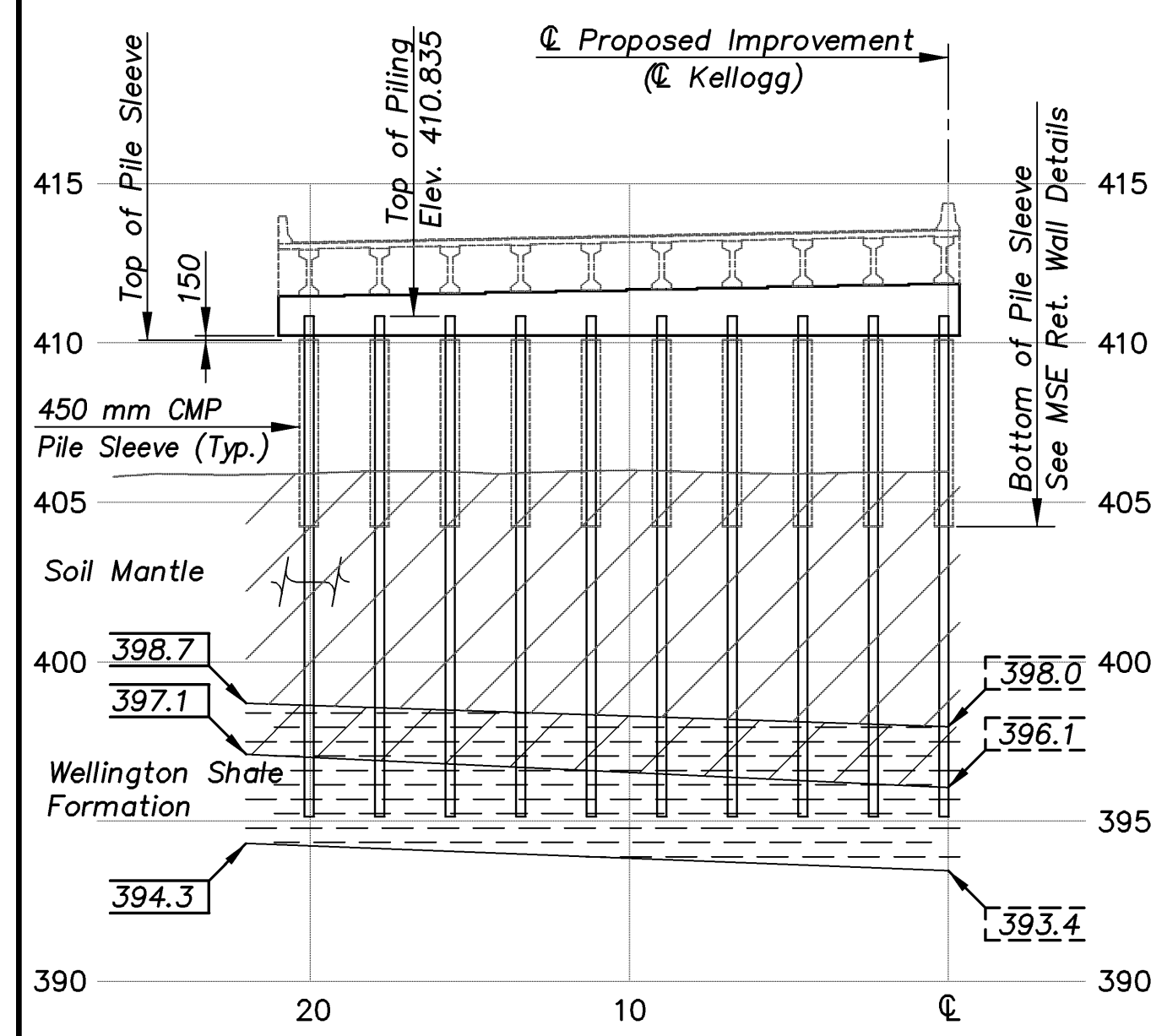


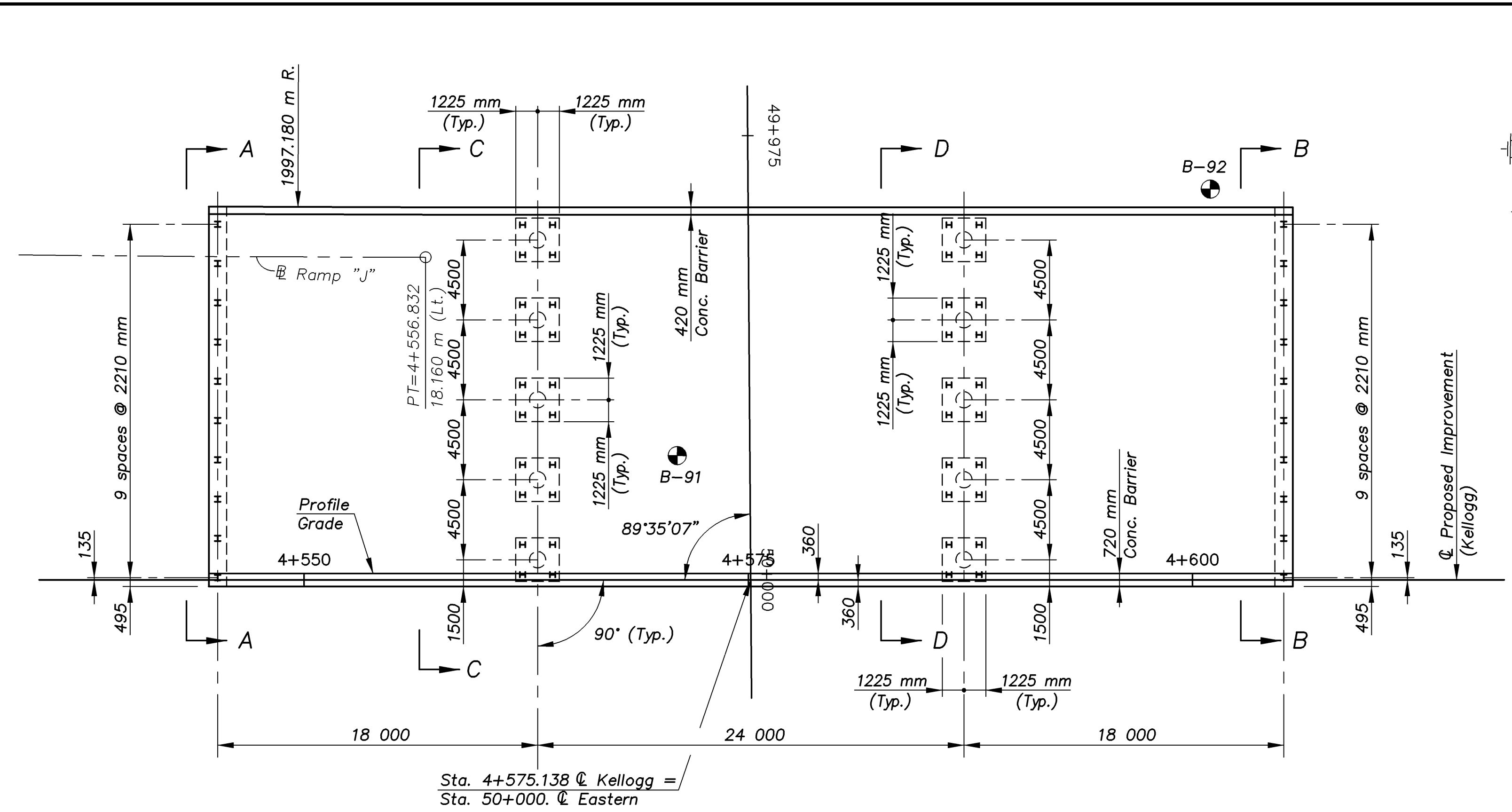
STATE	PROJECT NO.	YEAR	SHEET NO.	TOTAL SHEETS
KANSAS	54-87 K-8258-08	2005	83	223



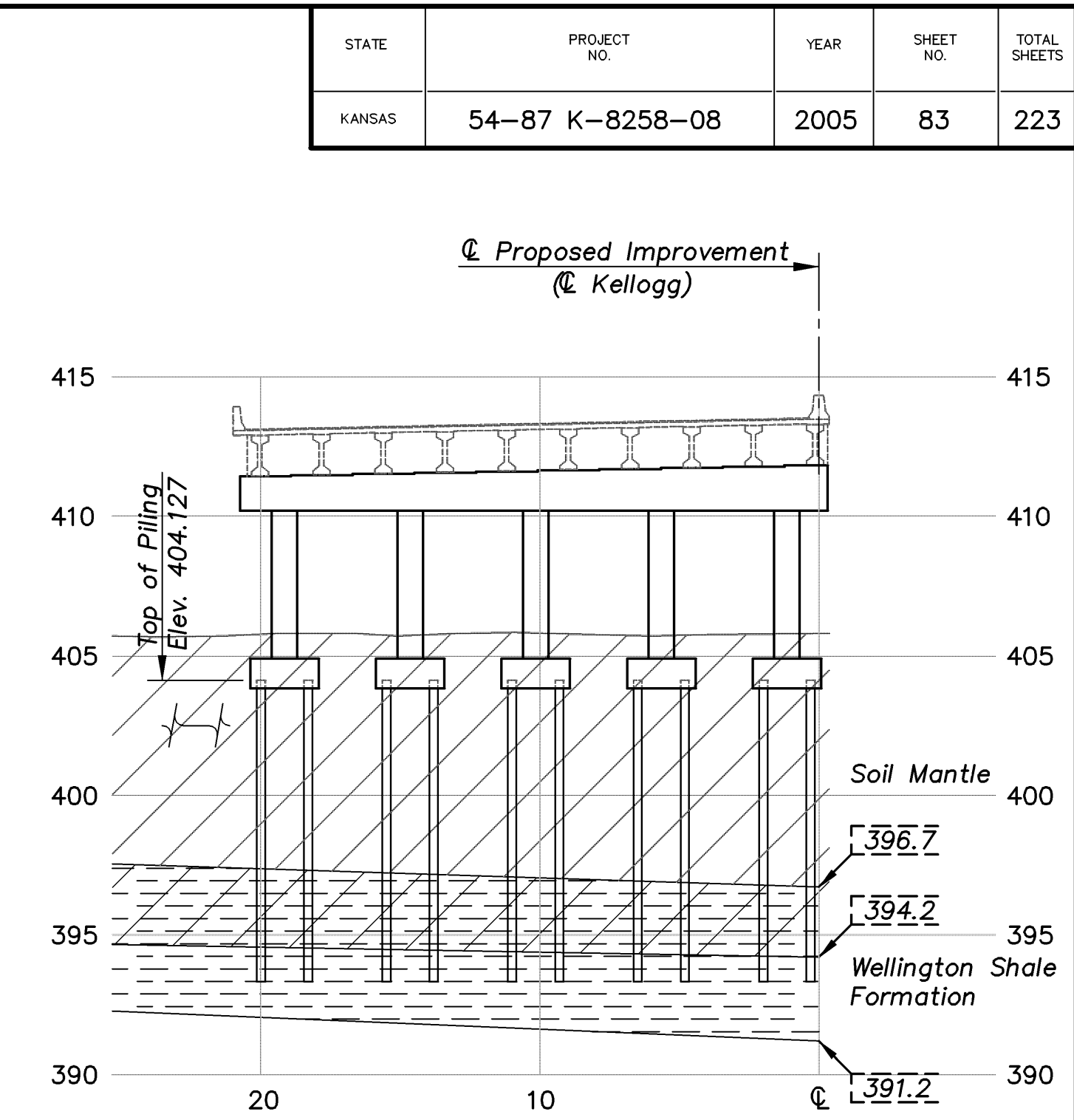
SECTION A-A



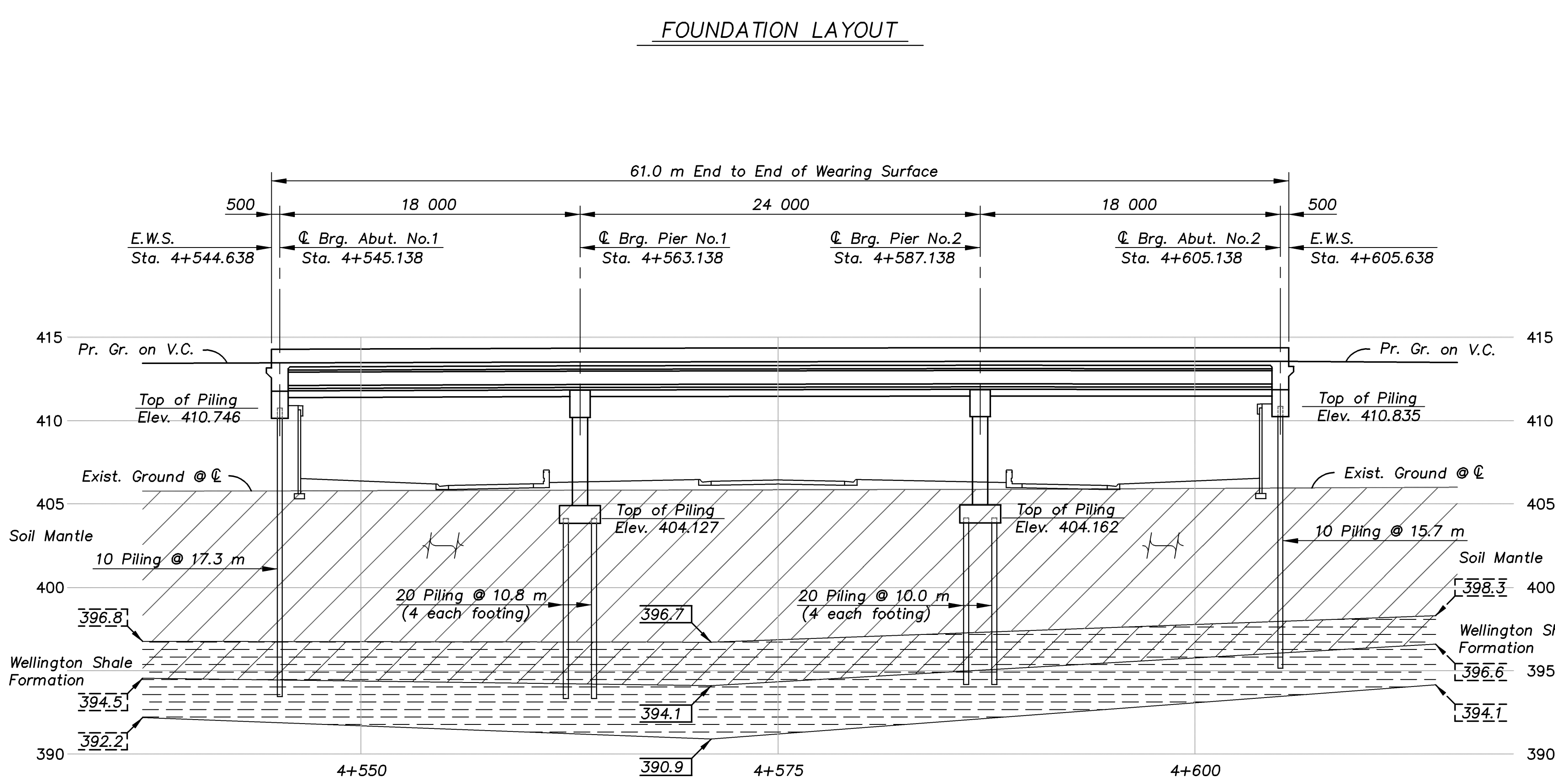
SECTION B-B



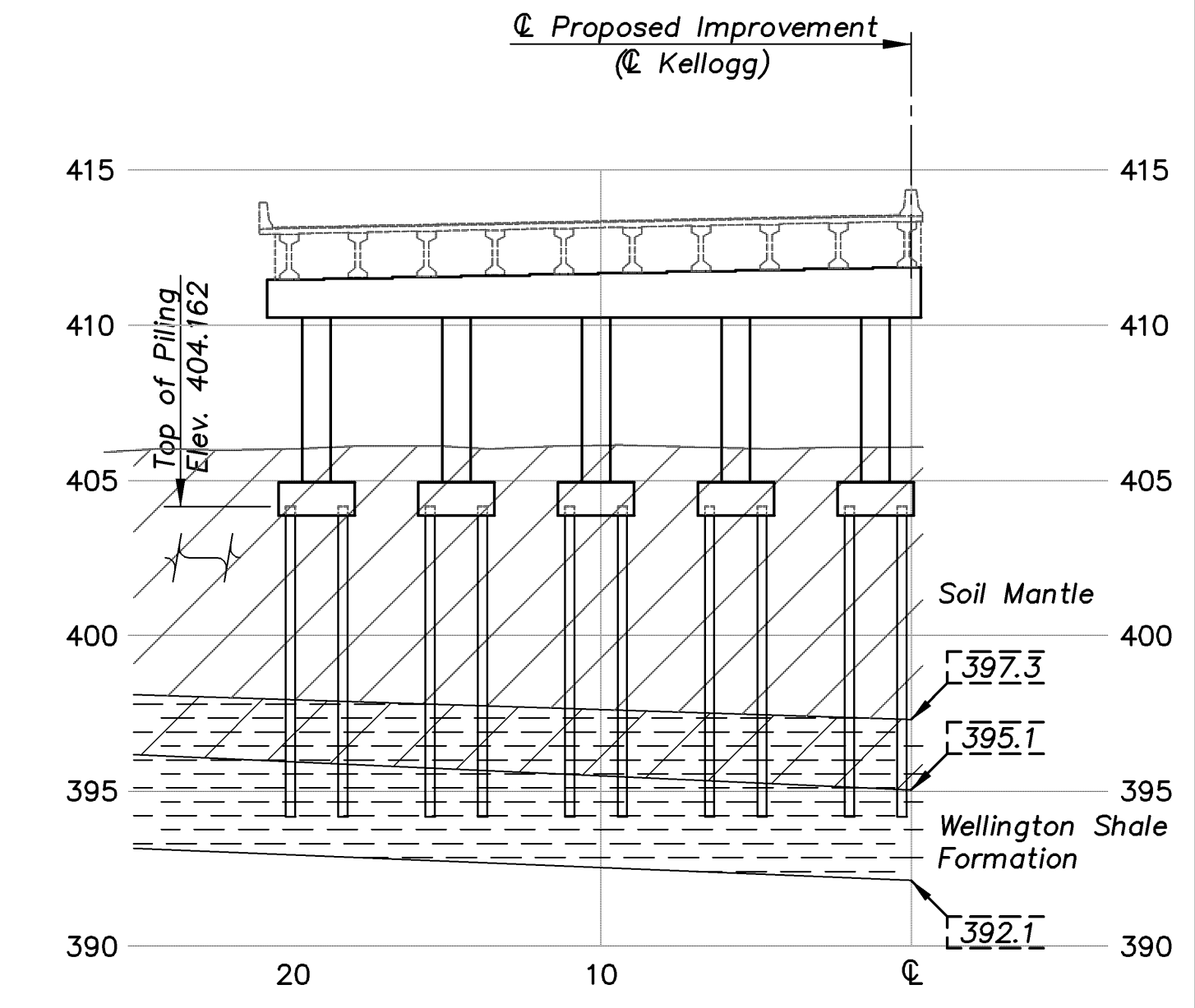
FOUNDATION LAYOUT



SECTION C-C



GEOLOGICAL PROFILE



SECTION D-D

STANDARD GEOLOGIC SYMBOLS

	Clay		Shale		Sand
	Gypsum		Weathered Shale		

STANDARD PENETRATION TEST

000.0 | 00
000.0 | 00

Elevation
SPT N-Value

UNCONFINED COMPRESSION TEST

000.0 | 00
000.0 | 00

Elevation
kPa

NOTES:
THE SOUNDINGS SHOWN ON THESE PLANS ARE TAKEN FROM NOTES OBTAINED IN THE FIELD AND REPRESENT THE BEST INFORMATION AVAILABLE.

THE COMPLETE LOGS AND LABORATORY TEST DATA ARE IN THE FILES OF THE ENGINEER AND ARE AVAILABLE AT THEIR OFFICE AT TOPEKA, KANSAS FOR INSPECTION BY INTERESTED AND QUALIFIED BIDDERS.

KANSAS DEPARTMENT OF TRANSPORTATION
BR. NO. 54-87-31.55(704) W.B. STA. 4+575.138

CFS
Cook, Flatt & Strobel
ENGINEERS, P. A.

ENGINEERING GEOLOGY
KELLOGG AVENUE OVER EASTERN

DESIGNED R.S.C. SCALE 1:200
DETAILED T.R.G. DATE
QUANTITIES T.R.G. SHEET 5 OF 47

EASTERN/GEOLOGY 1:200