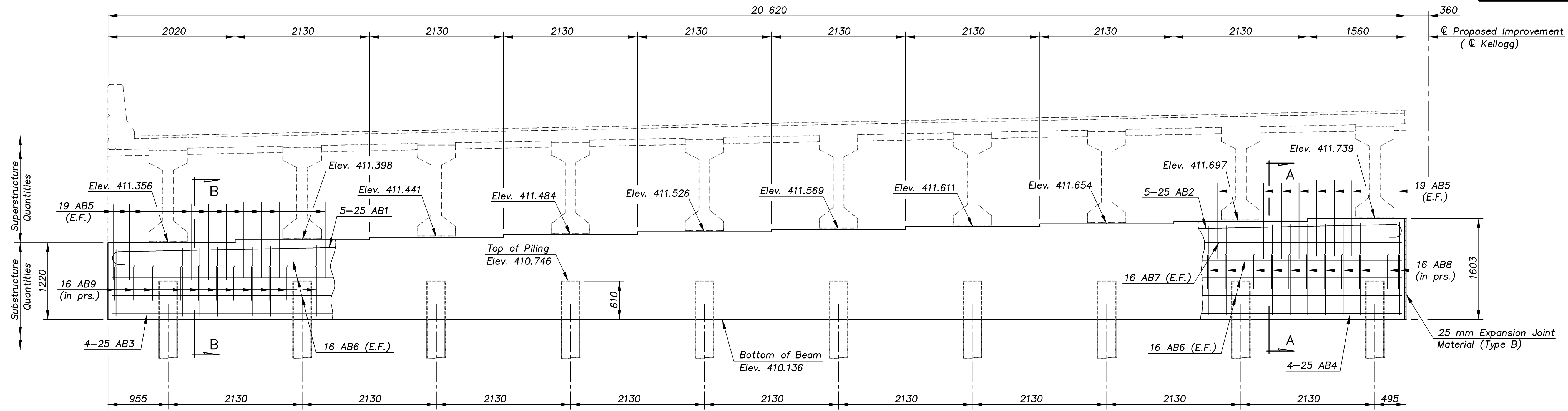


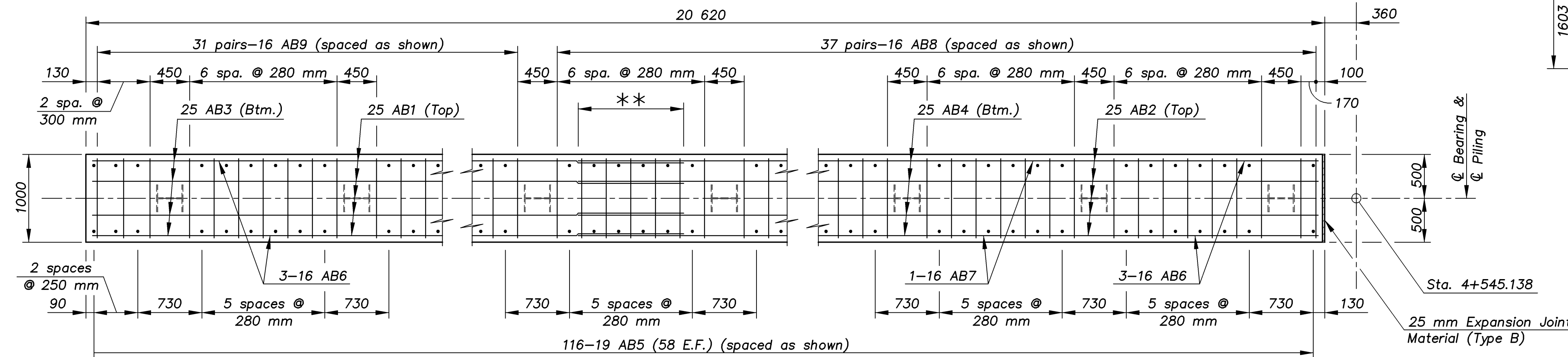
E.F. INDICATES EACH FACE.
N.F. INDICATES NEAR FACE.
F.F. INDICATES FAR FACE.

STATE	PROJECT NO.	YEAR	SHEET NO.	TOTAL SHEETS
KANSAS	54-87 K-8258-08	2005	89	223



ELEVATION OF ABUTMENT BEAM
(Looking Back Station)

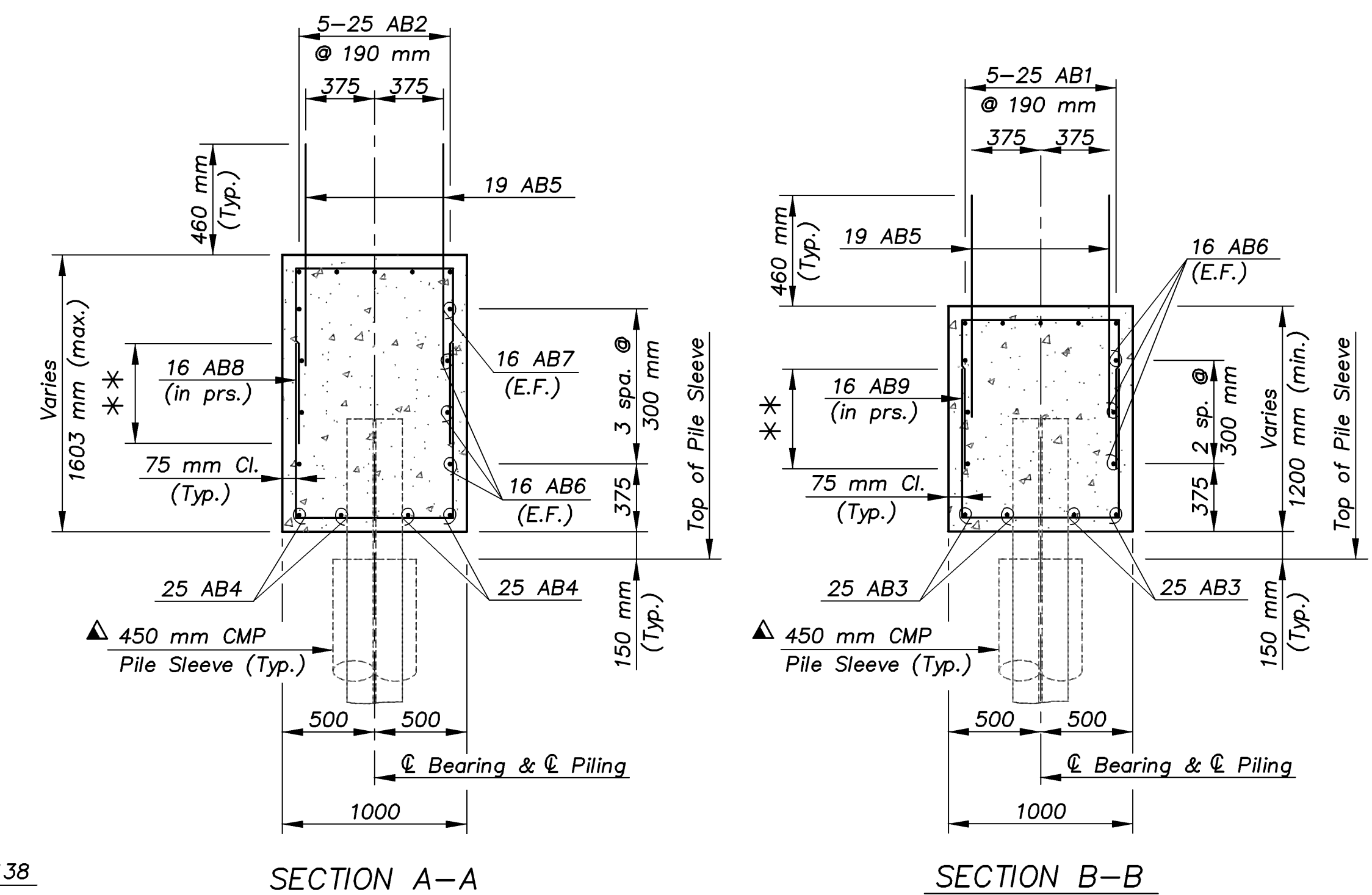
** 1680 mm lap (min.) 25 AB1 & AB2 Bars
1200 mm lap (min.) 25 AB3 & AB4 Bars
600 mm lap (min.) 16 AB6, AB8 & AB9 Bars



PARTIAL PLAN OF ABUTMENT BEAM

DESIGN PILE PRESSURE: 600 kN per Pile
Group 1 Loading
ALLOWABLE LOAD: 620 kN per Pile

▲ Abutment Pile Sleeve shall extend from the bottom of the Mechanically Stabilized Earth Retaining Wall to within 150 mm of the bottom of abutment beam at each pile location. Sleeves to be set prior to placement of Select Granular Backfill. Lateral bracing of the pile sleeves is required during the wall construction. Method of bracing shall be approved by the Engineer. Bracing shall remain in service until the Engineer authorizes its removal. All material and labor necessary to install and maintain the Abutment Pile Sleeves shall be considered Subsidiary to the bid item "Steel Pile HP310x79".



SECTION A-A

SECTION B-B

EASTERN/ABUTMENT 1:100

KANSAS DEPARTMENT OF TRANSPORTATION		BR. NO. 54-87-31.56(705) E.B.		STA. 4+575.138	
ABUTMENT NO. 1 BEAM DETAILS					
KELLOGG AVENUE OVER EASTERN					
Proj. No. 54-87 K-8258-08 SEDGWICK COUNTY					
CFS Cook, Flatt & Strobel ENGINEERS, P. A.		DESIGNED R.S.C.	SCALE	Varies	
		DATE			
		T.R.G.			
		DATE			
		T.R.G.			
		SHEET	11 OF 47		