

* Measured along the backface of abutment (E.W.S.).

E.F. INDICATES EACH FACE.
N.F. INDICATES NEAR FACE.
F.F. INDICATES FAR FACE.

STATE	PROJECT NO.	YEAR	SHEET NO.	TOTAL SHEETS
KANSAS	54-87 K-8258-08	2005	93	223

GENERAL NOTES

ABUTMENT STRIP DRAIN: The Bridge Contractor shall excavate to the limits shown on the plans, bottom of the backfill area, place the abutment strip drain, and place the perforated pipe and the backfill.

BRIDGE BACKWALL PROTECTION SYSTEM: Apply a Bridge Backwall Protection System to the approach side of the abutments in accordance with KDOT Specifications and manufacturers recommendations. Cover the abutments to the limits shown on the details. Prior to the backfilling, repair any damage done to the system at no charge to the State.

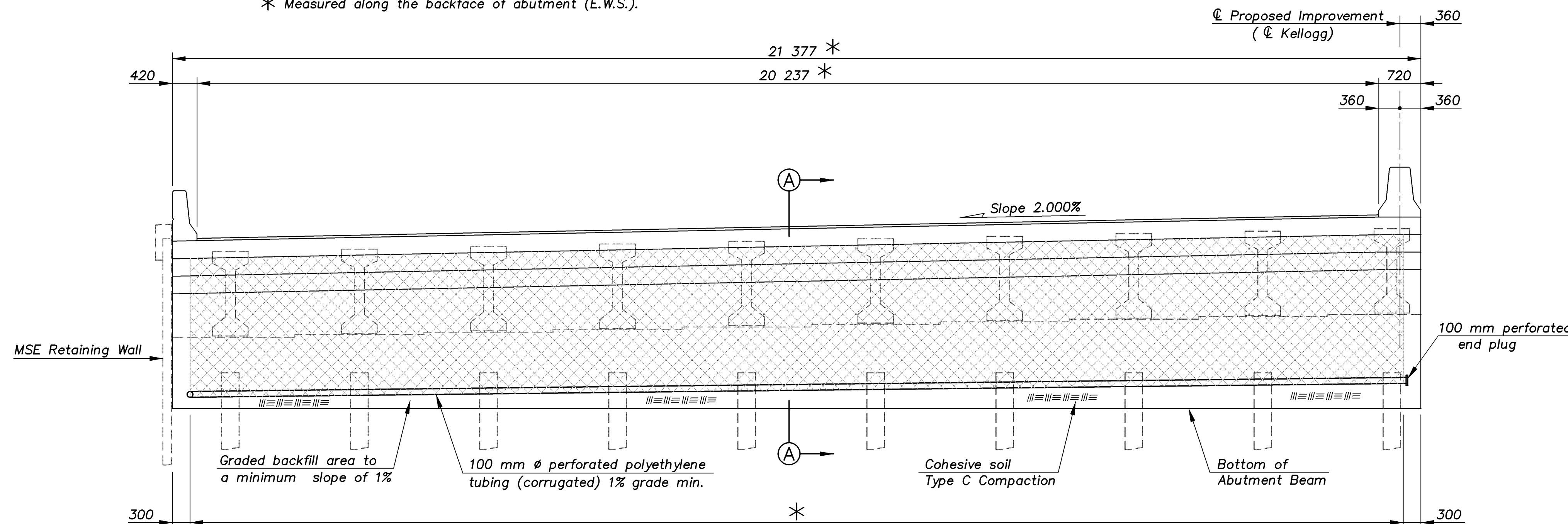
Place the Perforated pipe next to the strip drain. Care shall be taken to enclose the perforated pipe with the extension of the filter fabric.

Compact the abutment fill. See KDOT Specifications.

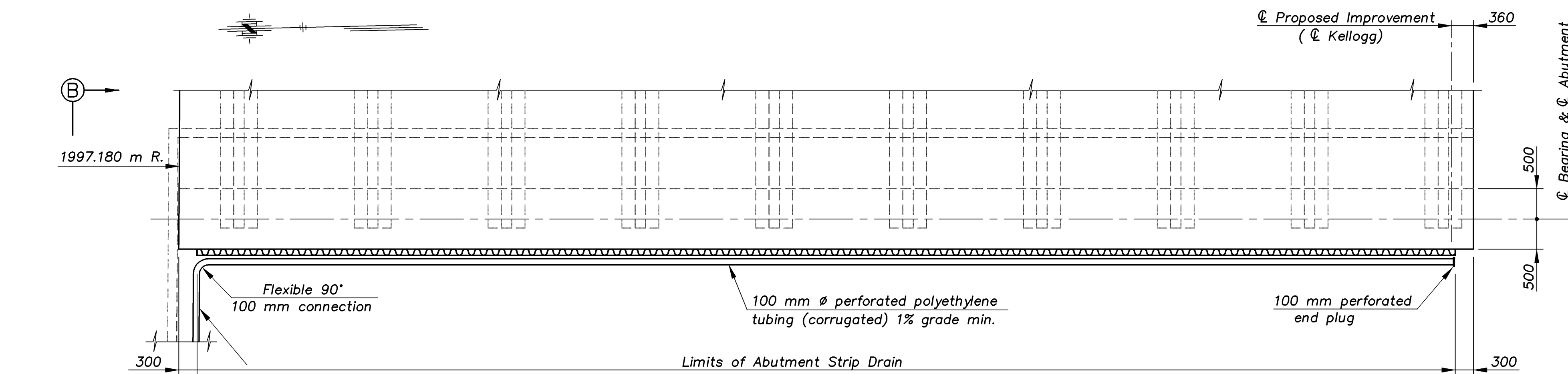
The Abutment Strip Drain material shall meet the requirements of KDOT Specifications.

Perforated pipe shall be corrugated polyethylene tubing and shall meet the requirements of the KDOT Specifications.

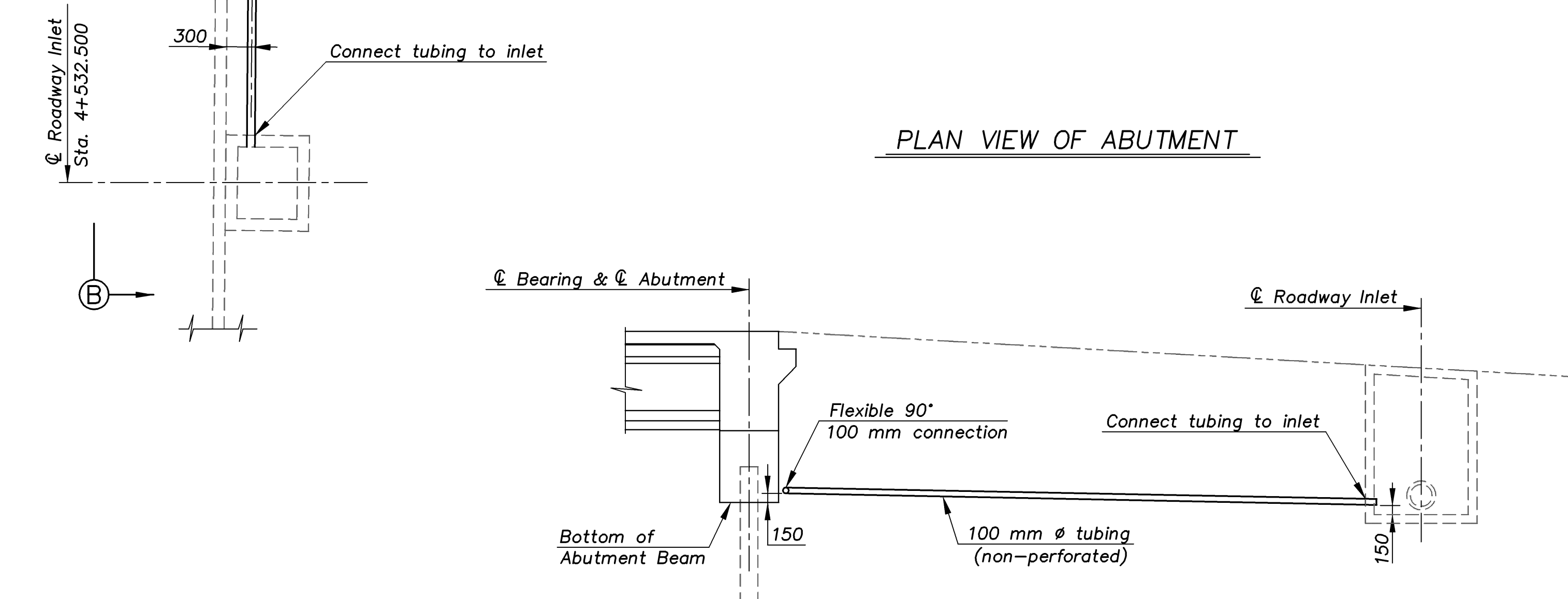
Grade the bottom surface of the excavated area to drain. Backfill this area with a cohesive type soil. The soil should be a silty clay or clay under the Kansas Classification System with a minimum plasticity index of 20. Compact the material to Type C standards.



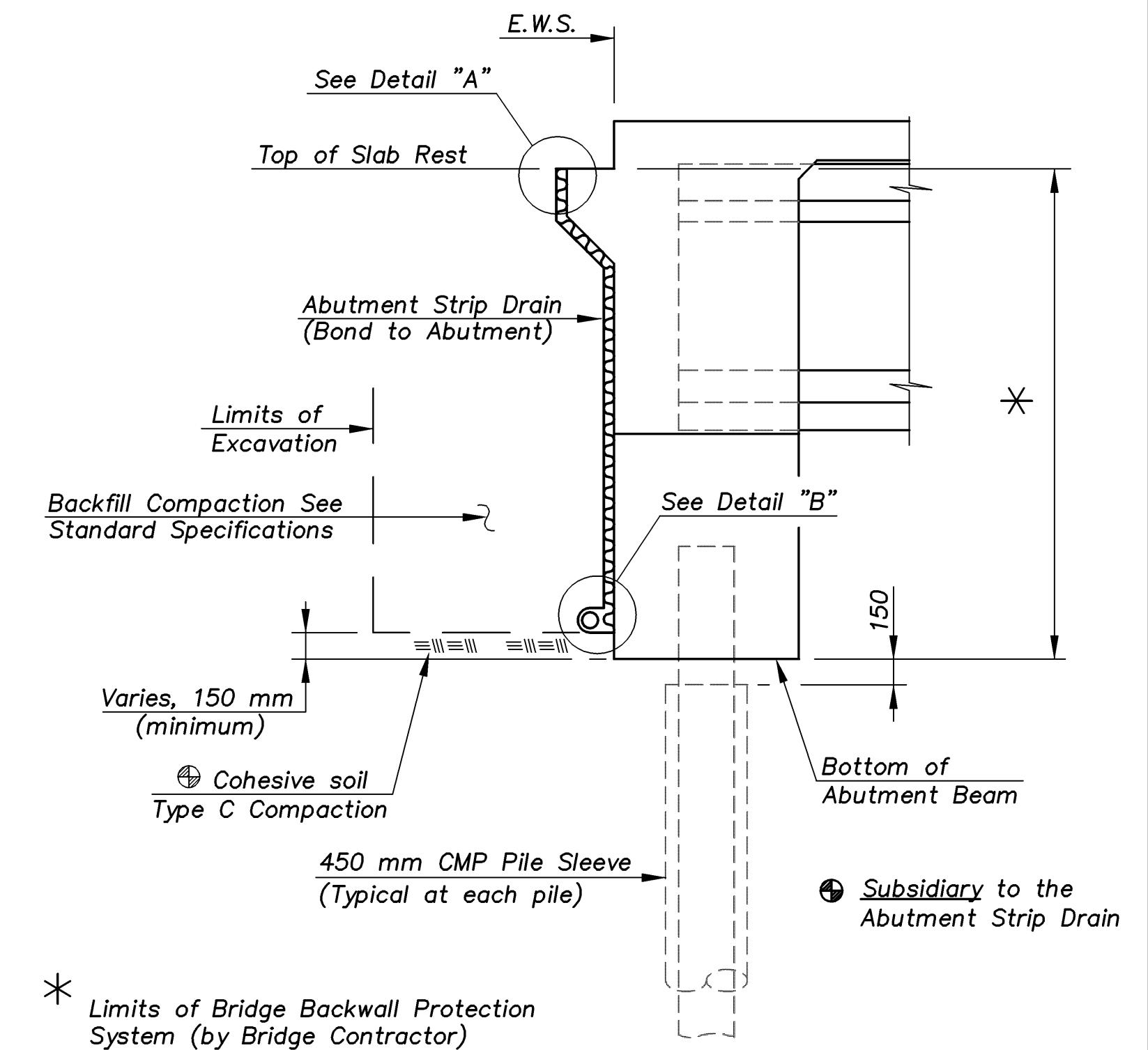
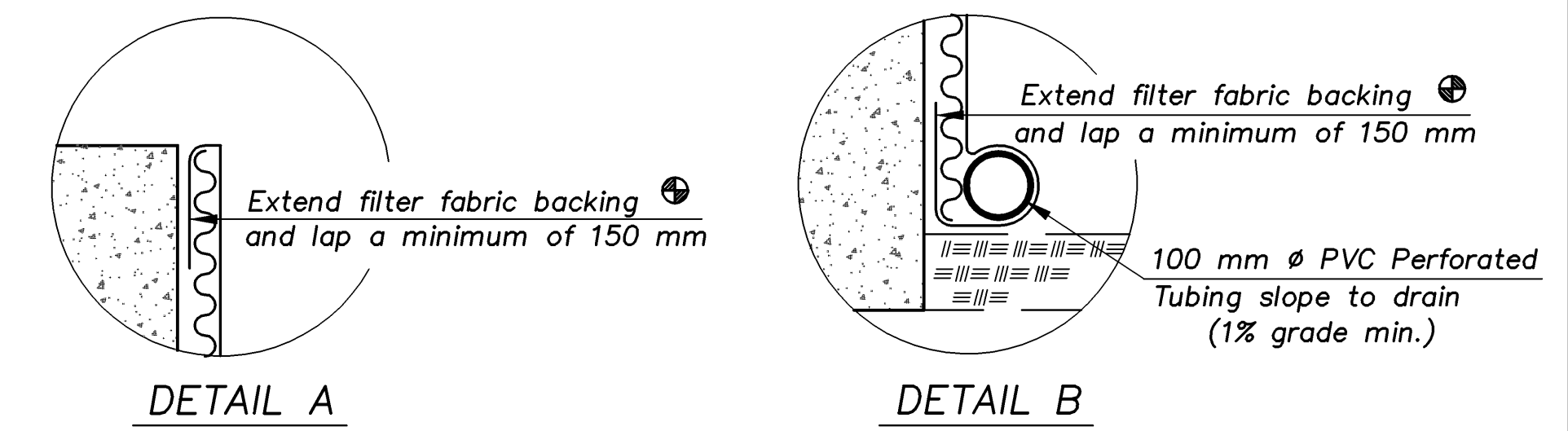
ELEVATION OF ABUTMENT



PLAN VIEW OF ABUTMENT



SECTION B-B



SECTION A-A

SUMMARY OF QUANTITIES	
Items	Quantity
ABUTMENT STRIP DRAIN	55.9 m ²
BRIDGE BACKWALL PROTECTION SYSTEM	61.2 m ²
Items Subsidiary to Strip Drain	
100 mm diameter PERFORATED PIPE	20.8 m
100 mm diameter NON-PERFORATED PIPE	11.5 m

KANSAS DEPARTMENT OF TRANSPORTATION
BR. NO. 54-87-31.55(704) W.B. STA. 4+575.138

ABUTMENT NO. 1 STRIP DRAIN
KELLOGG AVENUE OVER EASTERN

CFS
Cook, Flatt & Strobel
ENGINEERS, P. A.

DESIGNED	R.S.C.	SCALE	Varies
DETAILED	T.R.G.	DATE	
QUANTITIES	T.R.G.	SHEET	15 OF 47

Proj. No. 54-87 K-8258-08 SEDGWICK COUNTY