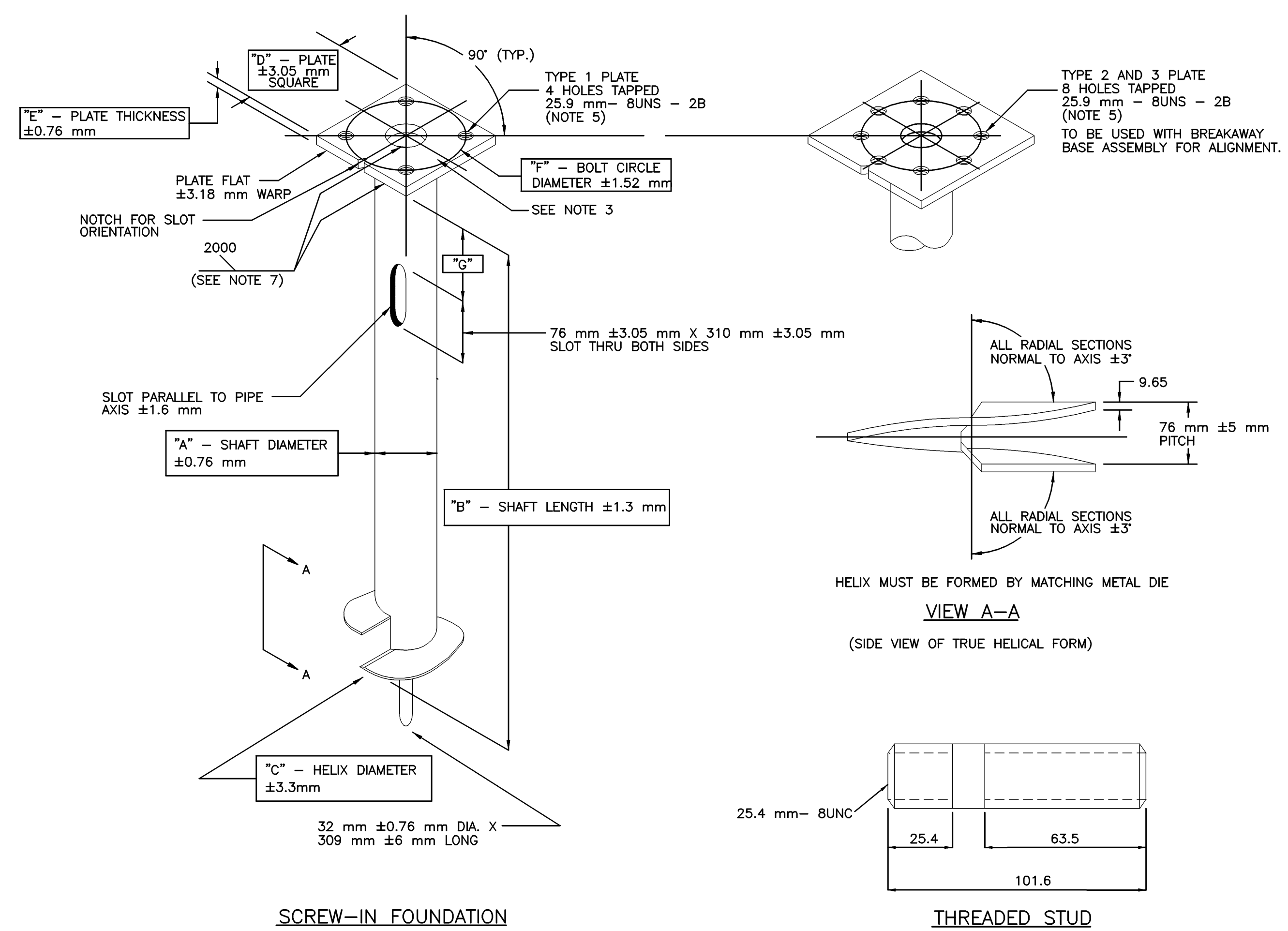
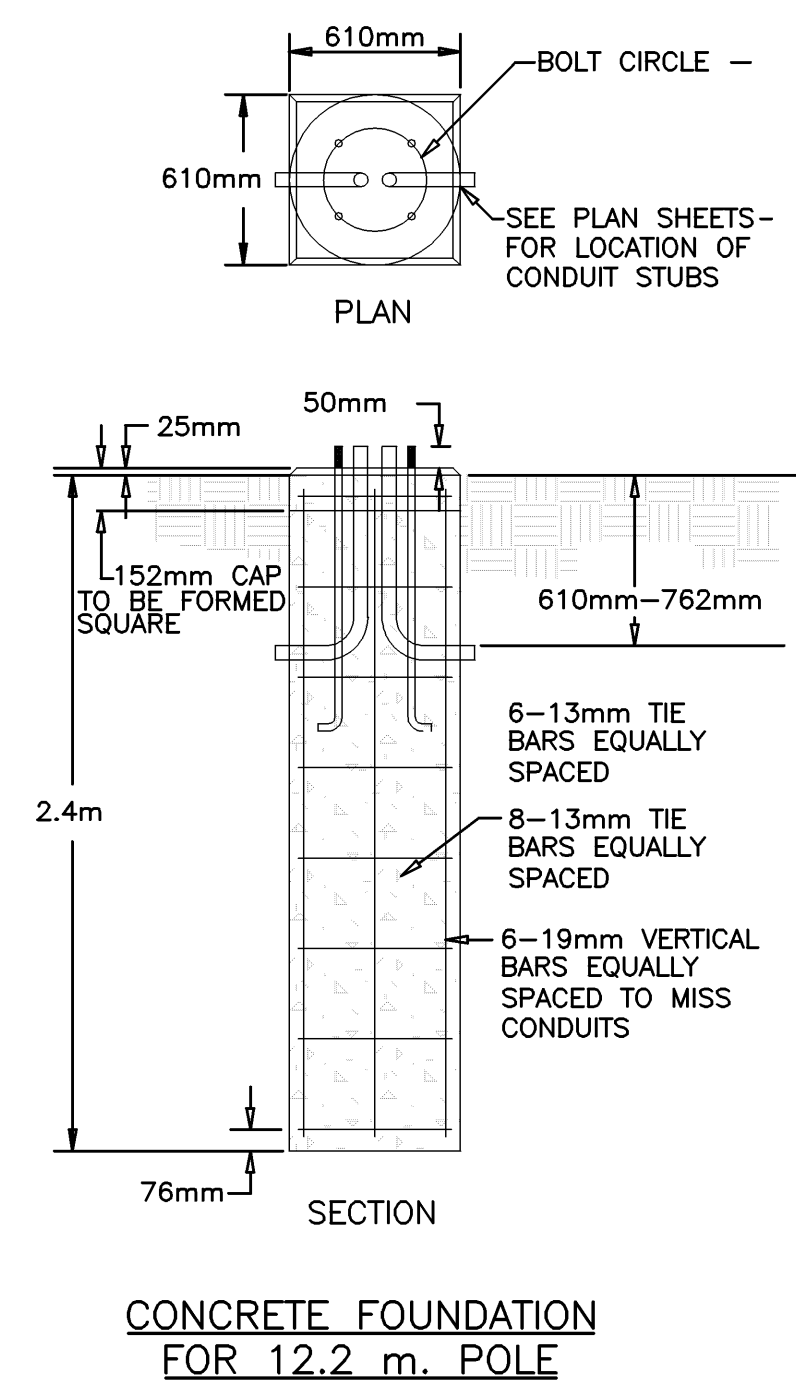


DATE	
BY	
REFERENCE NOTED	
REFERENCE CHECKED	



- NOTES:
- FINISH: HOT DIP GALVANIZE PER ASTM-A153 (LATEST REVISION).
 - BASEPLATE TO BE PERPENDICULAR TO SHAFT AXIS ($\pm 1^\circ$) AND HOLE AND CONCENTRIC (± 4.78 mm I.D. FIM) TO SHAFT AXIS
 - ALL BASES SHALL BE IDENTIFIED BY THE MANUFACTURER'S INITIALS AND THE ANCHOR TYPE (1,2 & 3) PERMANENTLY STAMP INTO THE TOP PLATE WITH 13 mm LETTERS. THE DATE OF MANUFACTURE SHALL BE PERMANENTLY STAMPED IN 6.5 mm NUMERALS.
 - PILOT POINT AND SHAFT AXES TO BE CONCENTRIC (± 3.19 mm FIM) AND IN LINE ($\pm 2^\circ$).
 - TAP 13 mm HOLES ON THE SPECIFIED BOLT CIRCLE PERPENDICULAR TO THE BASEPLATE. CLEAN AND CHASE THE THREADS AFTER HOT-DIP GALVANIZING SO THAT A BOLT MAY BE HAND INSTALLED.
 - PREHEAT (ROOM TEMPERATURE 21°C), TUMBLEBLAST, HANDGRIND, AND CLEAN BASEPLATE, HELIX, AND CORE ON ALL WELD AREAS.
 - FLAMECUT IRREGULARITIES PERMISSIBLE:
 - VALLEYS NOT TO EXCEED 2.38 mm BELOW NOMINAL SURFACE LEVEL.
 - PEAKS OR POSITIVE IRREGULARITIES NOT TO EXCEED 0.79 mm ABOVE NOMINAL SURFACE LEVEL OR INTERSECTIONS OF NOMINAL SURFACES.
 - MANUFACTURER TO HAVE IN EFFECT INDUSTRY RECOGNIZED WRITTEN QUALITY CONTROL FOR ALL MATERIALS AND MANUFACTURING PROCESSES.
 - ALL MATERIAL IS TO BE NEW, UNUSED AND MILL TRACEABLE MEETING THE FOLLOWING SPECIFICATIONS:
 - BASEPLATE: ASTM A36-(LATEST REVISION) HOT ROLLED STEEL PLATE
 - SHAFT: STEEL PIPE PILES, SEAMLESS OR STRAIGHT WELDED, GRADE 2 PER ASTM A252. ALTERNATE MATERIAL PIPE TYPE E OR S, GRADE B PER ASTM A53.
 - HELIX: ASTM A635-(LATEST REVISION) HOT ROLLED STEEL PLATE
 - PILOT POINT: ASTM A575-(LATEST REVISION) HOT ROLLED STEEL
AISI C 1045 HOT ROLLED STEEL.
 - STUD: SPECIAL 25 mm DIAMETER HOT DIP GALVANIZED STUD THREADED AT BOTH ENDS. STUD SHALL INCLUDE ONE HEX NUT AND ONE EACH LOCK AND FLAT WASHER FOR THE TYPE 1 SCREW-IN FOUNDATION.
 - ALL 9.1 METER AND 12.2 METER ALUMINUM LIGHT POLES SHALL BE FURNISHED WITH PRECISION FORM PFI-200-1 BREAKAWAY COUPLING ASSEMBLIES.
 - THE DESIGN AND PERFORMANCE INTEGRITY OF THE FOUNDATION SHALL BE VERIFIED BY FULL-SCALE TESTS BY QUALIFIED ENGINEERS INDEPENDENT OF THE MANUFACTURER. CERTIFIED TEST REPORTS SHALL BE PROVIDED UPON REQUEST.
 - FLAME CUT NOTCH OR PROJECTION WILL BE ON BASE PLATE TO INDICATE SLOT ORIENTATION.



CONCRETE FOUNDATION DETAILS

