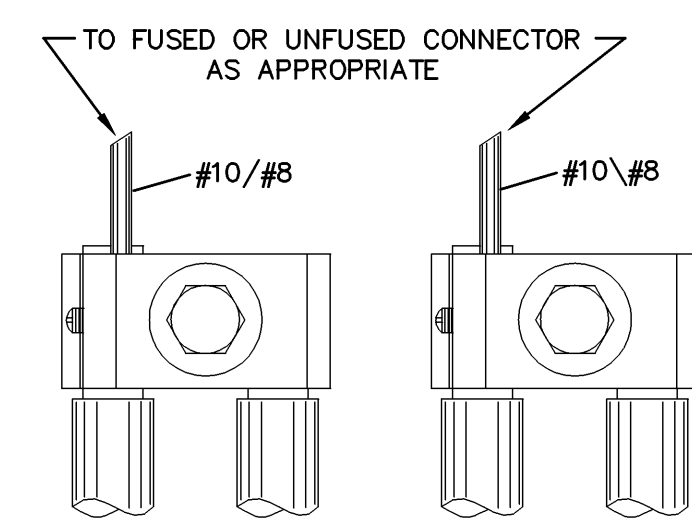
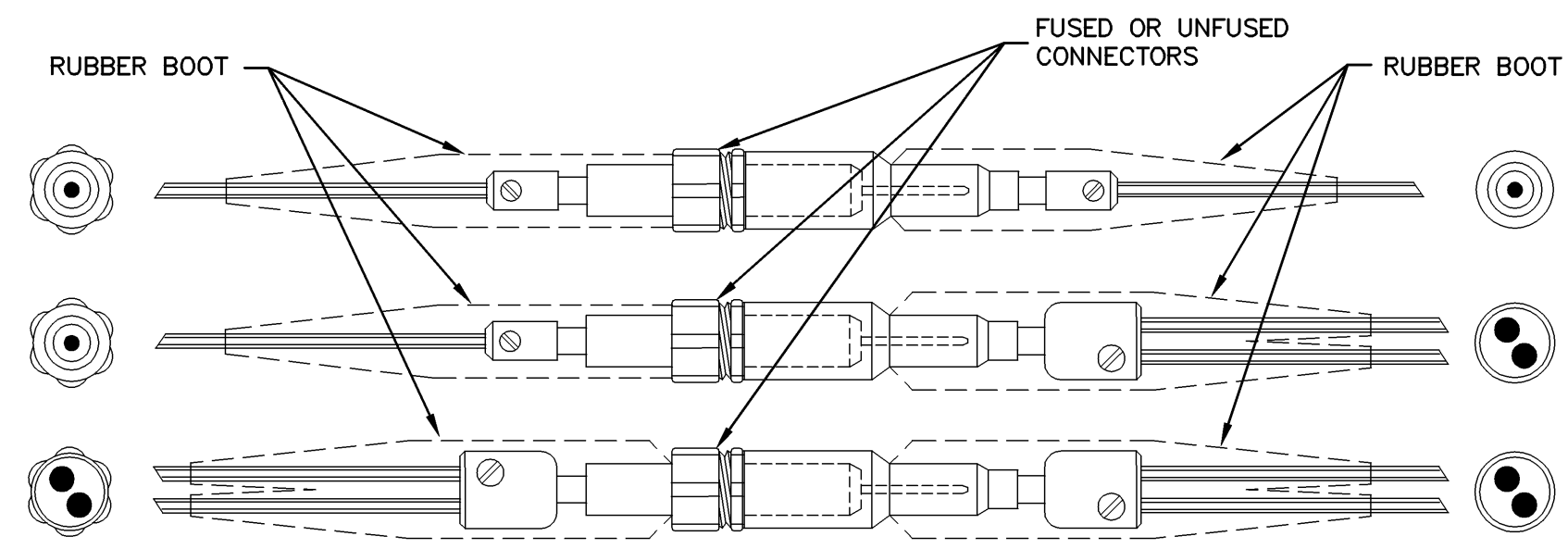
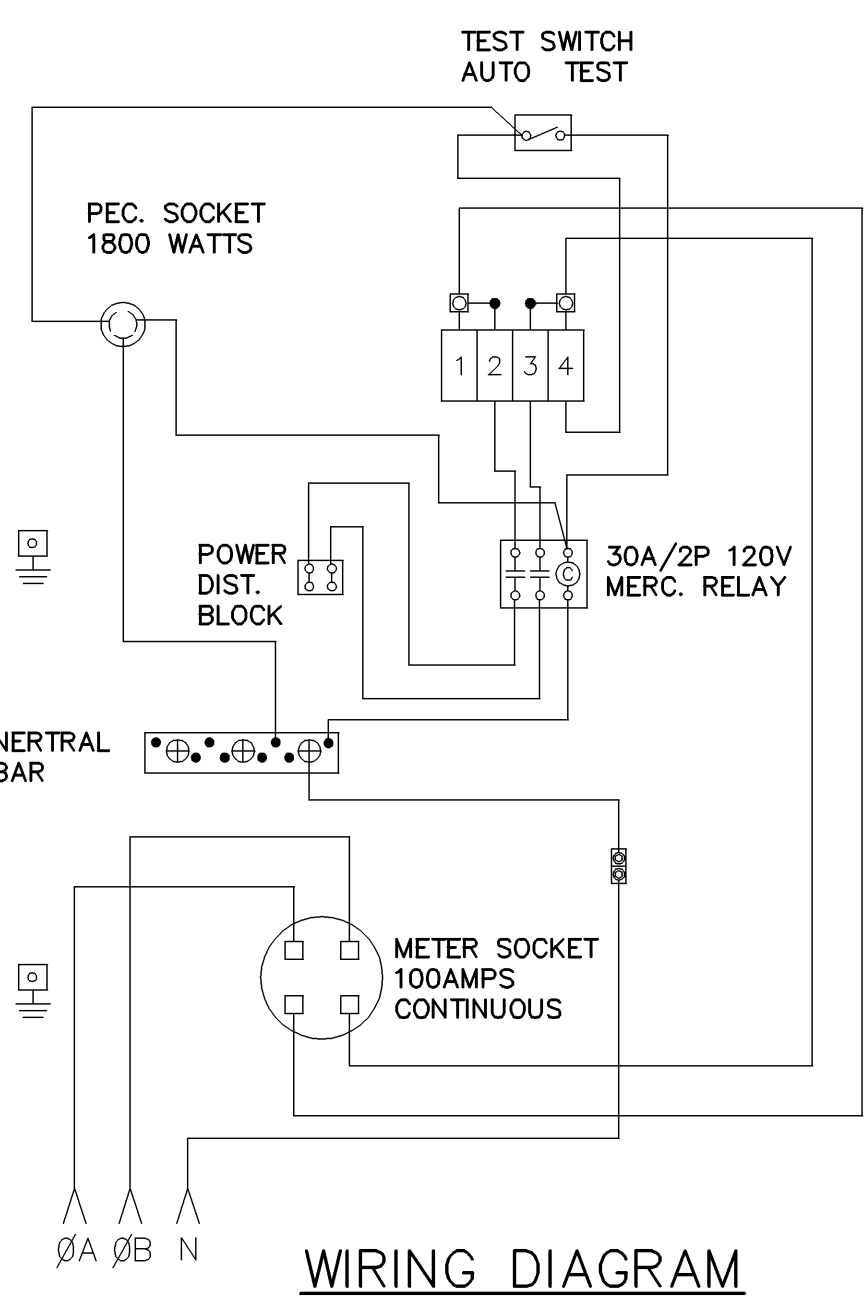


MATERIAL LIST

- 100 AMP. 4-JAW METER SOCKET.
- 100 AMP. 4-CIRCUIT INTERIOR.
- 20 A. 1-POLE CIRC. BREAKER, "CONTROL".
- 30 A. 2-POLE CIRC. BREAKER, "LIGHTING".
- 30 A. 2-POLE MERCURY CONTACTOR, 120 V. COIL.
- PHOTO CELL RECEPTACLE.
- 2-POSITION "AUTO-TEST" SWITCH.
- 100 AMP. BONDABLE NEUTRAL.
- 70 AMP. TERMINAL BLOCK.
- 38 mm CAP-OFF.
- NEUTRAL LUG.
- GRD. LUG (2).
- BLANK HUB.

NOTES:

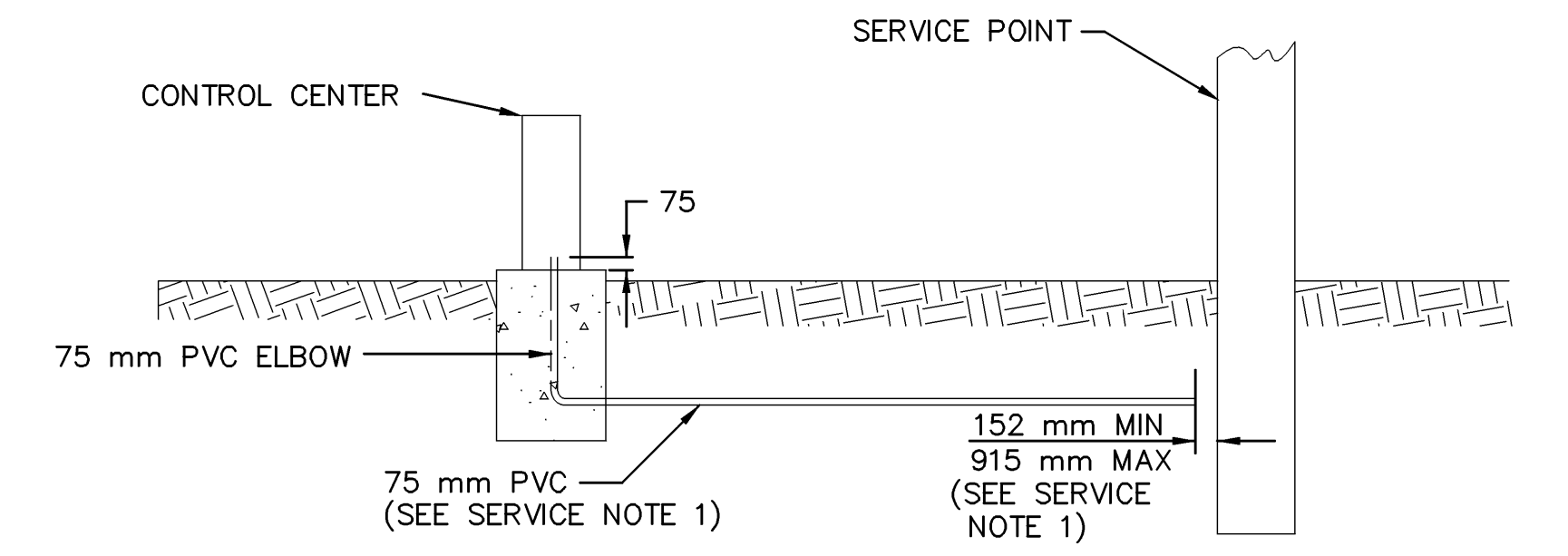
- ENCLOSURE TO BE CODE GA. CORROSION RESISTANT JET COAT STEEL, BUILT TO U.L. SPECIFICATIONS.
- 20 A. 1-POLE CIRC. BREAKER, "CONTROL".
- ALL FACTORY INSTALLED WIRE TO BE COPPER.
- ALL TERMINALS APPROVED FOR COPPER OR ALUM. WIRE.
- COPPER BUSSED CIRCUIT BREAKER INTERIOR.
- PADLOCK PROVISIONS.
- FINISH: COLOR AS REQUIRED.



NOTE: INCLUDES PLASTIC INSULATING COVER

SERVICE NOTES:

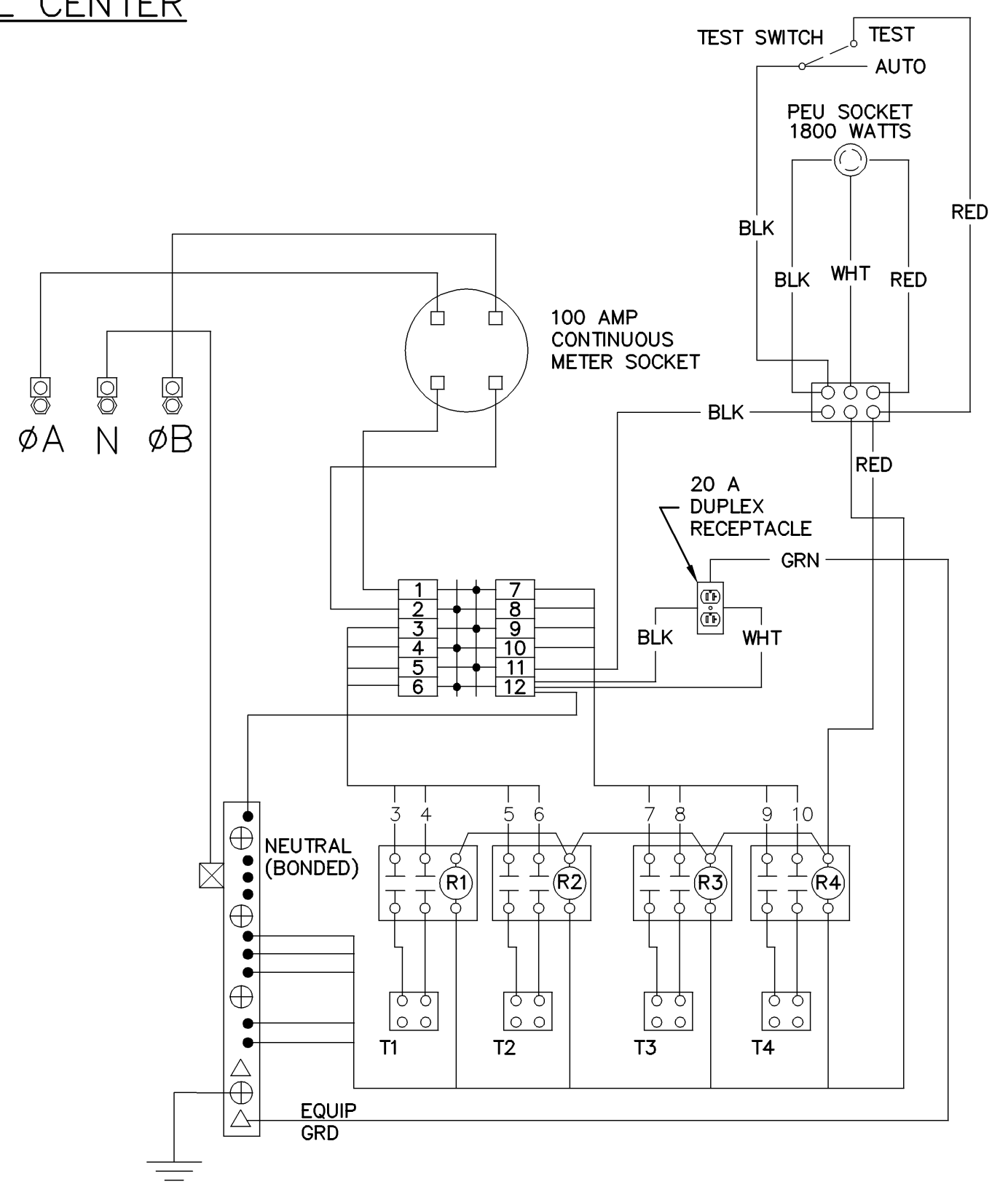
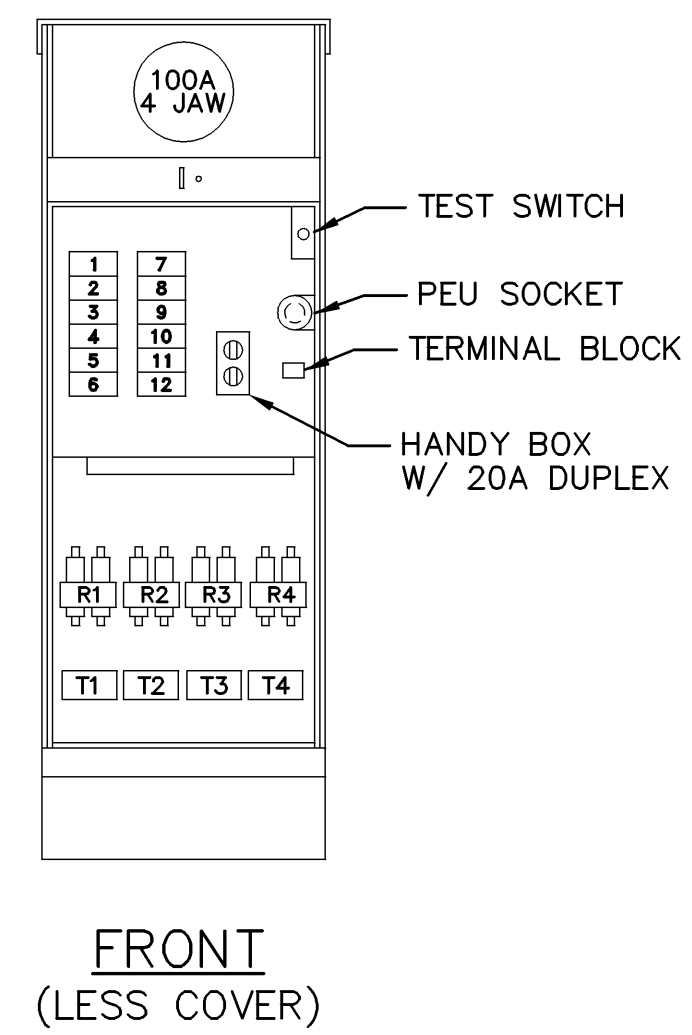
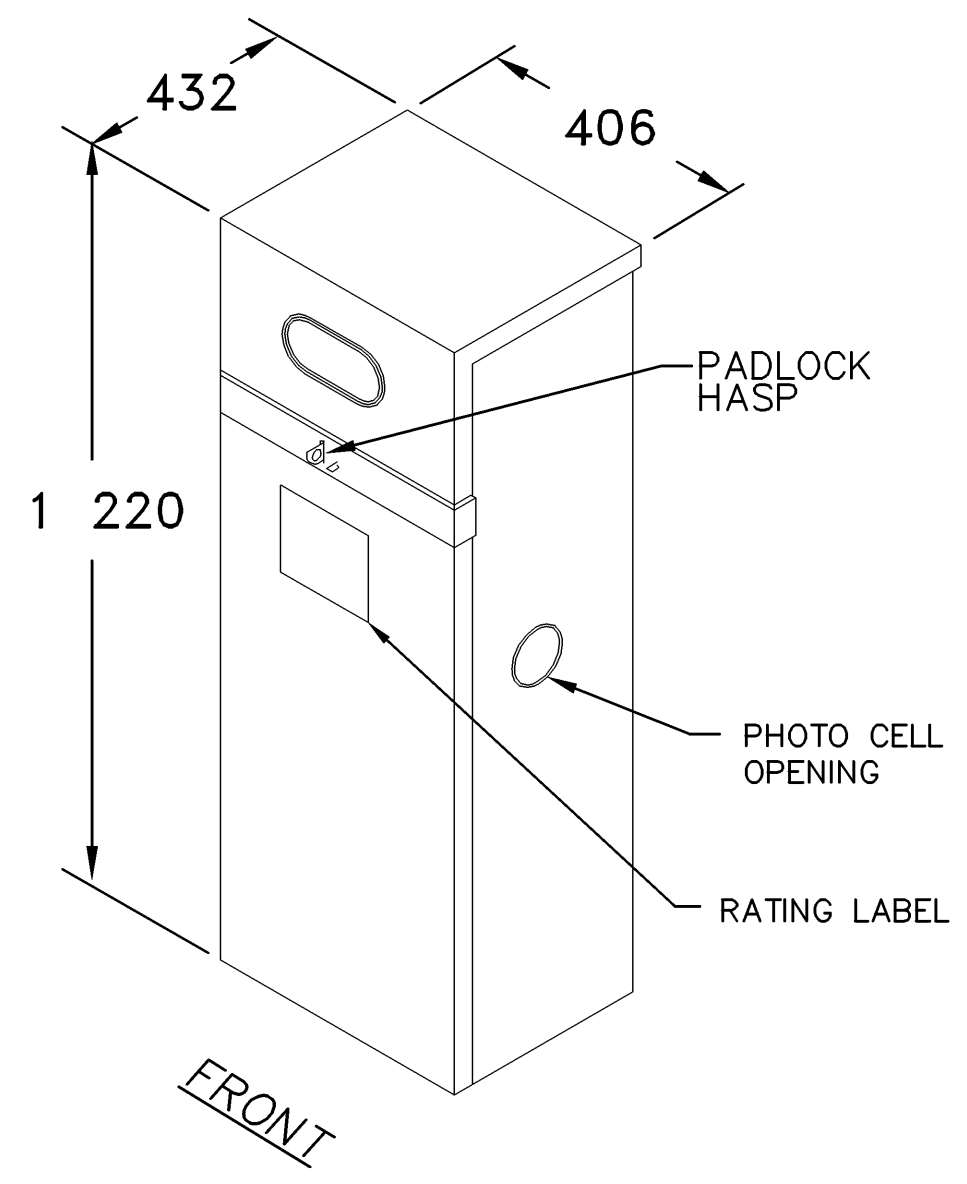
- CONTRACTOR SHALL INSTALL 75 mm PVC CONDUIT (762 mm DEEP) WITH PULL STRING TO WITHIN 152 mm MIN. - 915 mm MAX. OF THE BASE OF THE SERVICE POINT. PULL STRING TO BE PROVIDED FOR ELECTRICAL UTILITIES INSTALLED SERVICE CABLE.
- IN THE EVENT THAT ELECTRICAL UTILITIES DETERMINES THAT SERVICE CABLE MUST BE PROVIDED AND INSTALLED BY THE CONTRACTOR, THE CABLE SHALL HAVE AN AMPACITY RATING NOT LESS THAN 80 PERCENT OF THE MAXIMUM RATING OF THE CONTROL CENTER.



CONTROL CENTER NOTES:

- PROVIDE GROUND ROD(S) AS REQUIRED FOR MAXIMUM OF 25 OHMS RESISTANCE TO GROUND.
- CONCRETE SLAB TO PROVIDE SEMI-DRY WORKING AREA IN FRONT OF CONTROLLER CABINET.

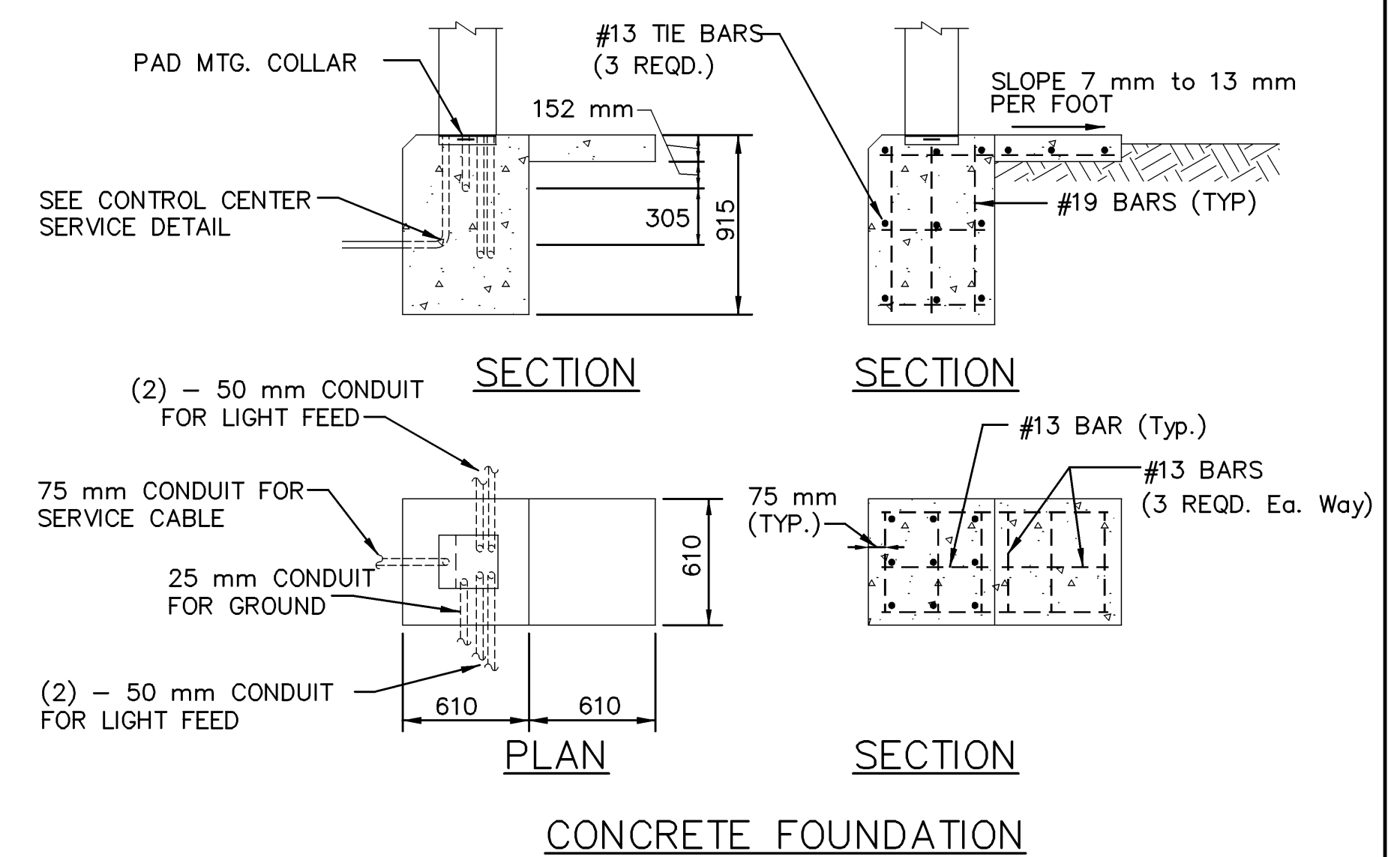
POLE MOUNTED CONTROL CENTER



CIRCUIT DIRECTORY

NO.	DESCRIPTION	QTY	AMP	POLE
3-4	CIRCUIT 1			2
5-6	CIRCUIT 2			2
7-8	CIRCUIT 3			2

SEE SPECIFICATIONS



DATE	
BY	
REFERENCE NOTED	
REFERENCE CHECKED	

Drawn by: M225
 Plotter: SCALE