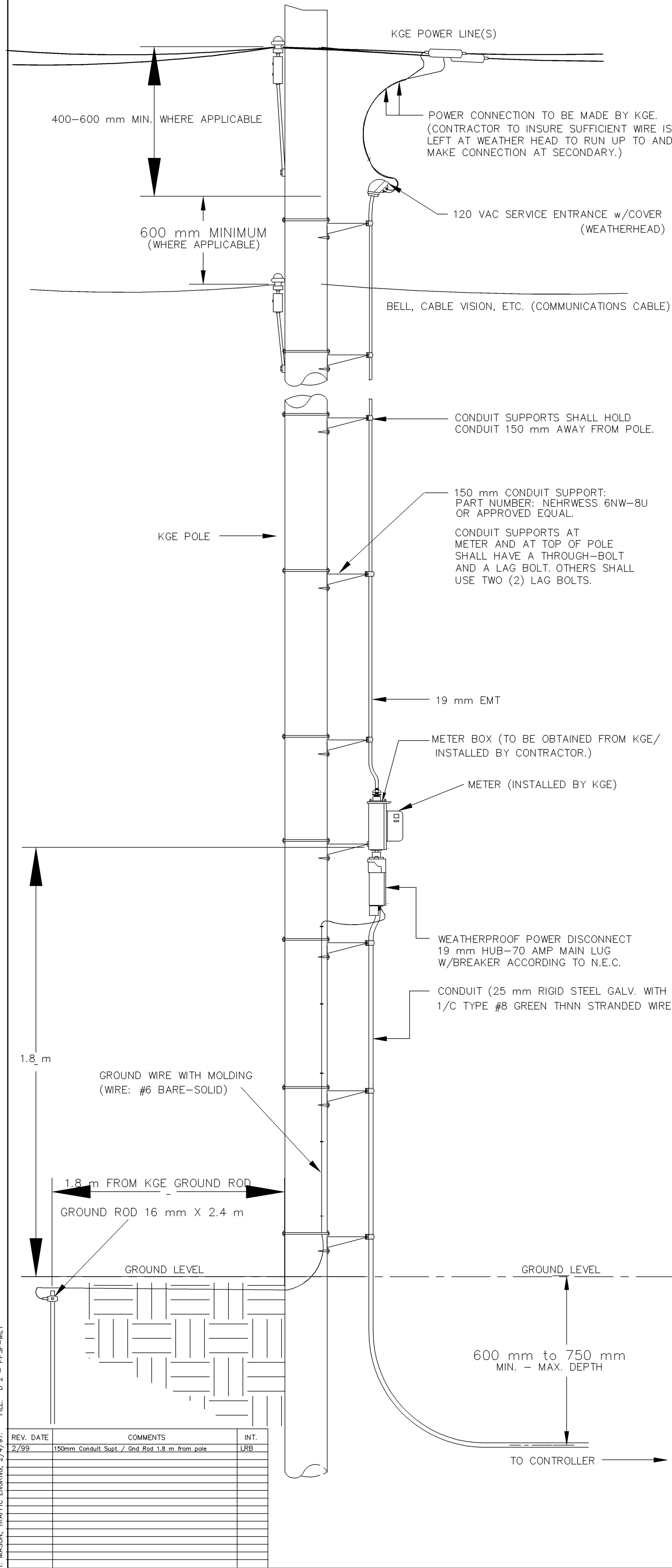
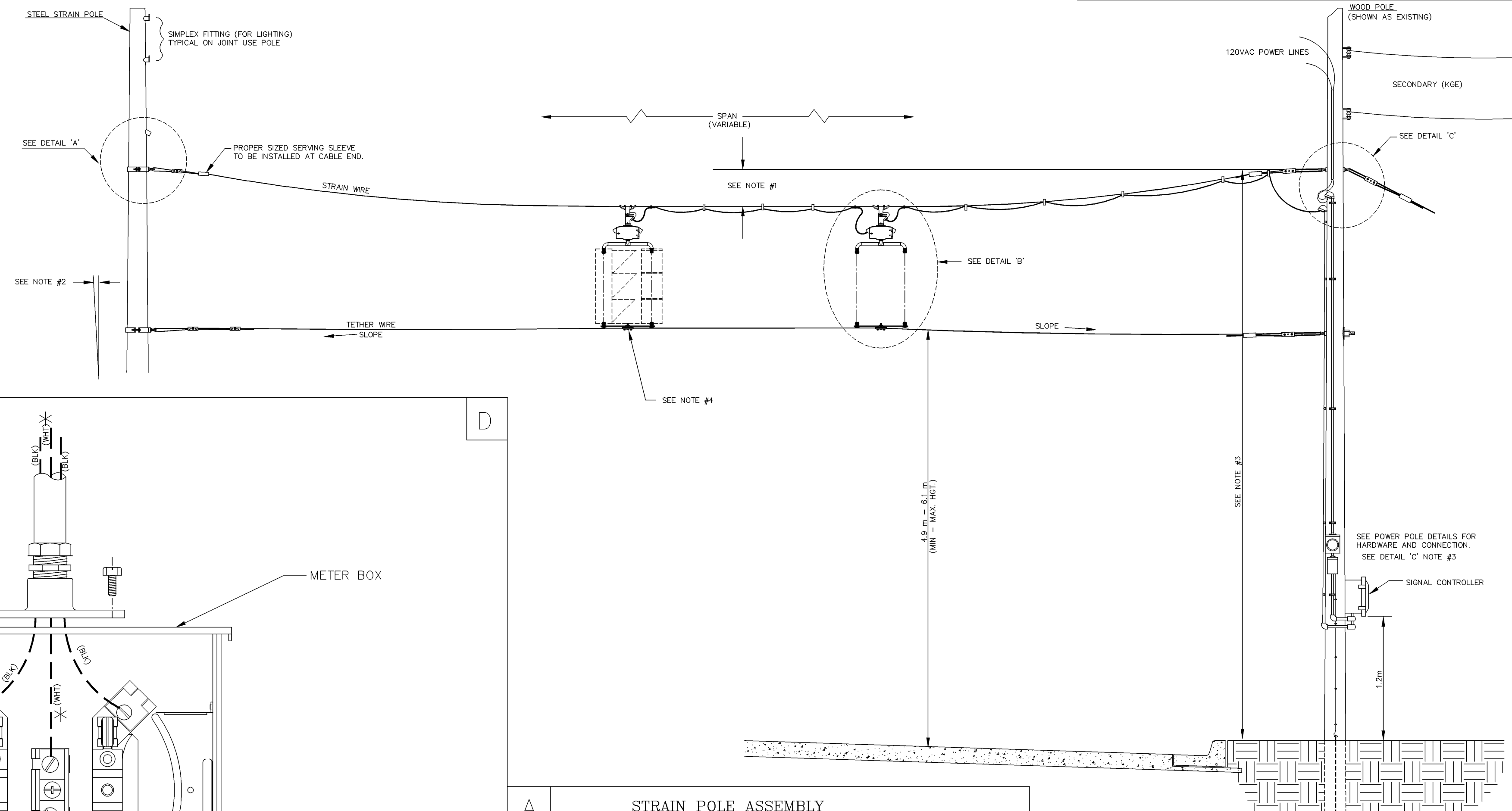


**POWER POLE DETAILS**



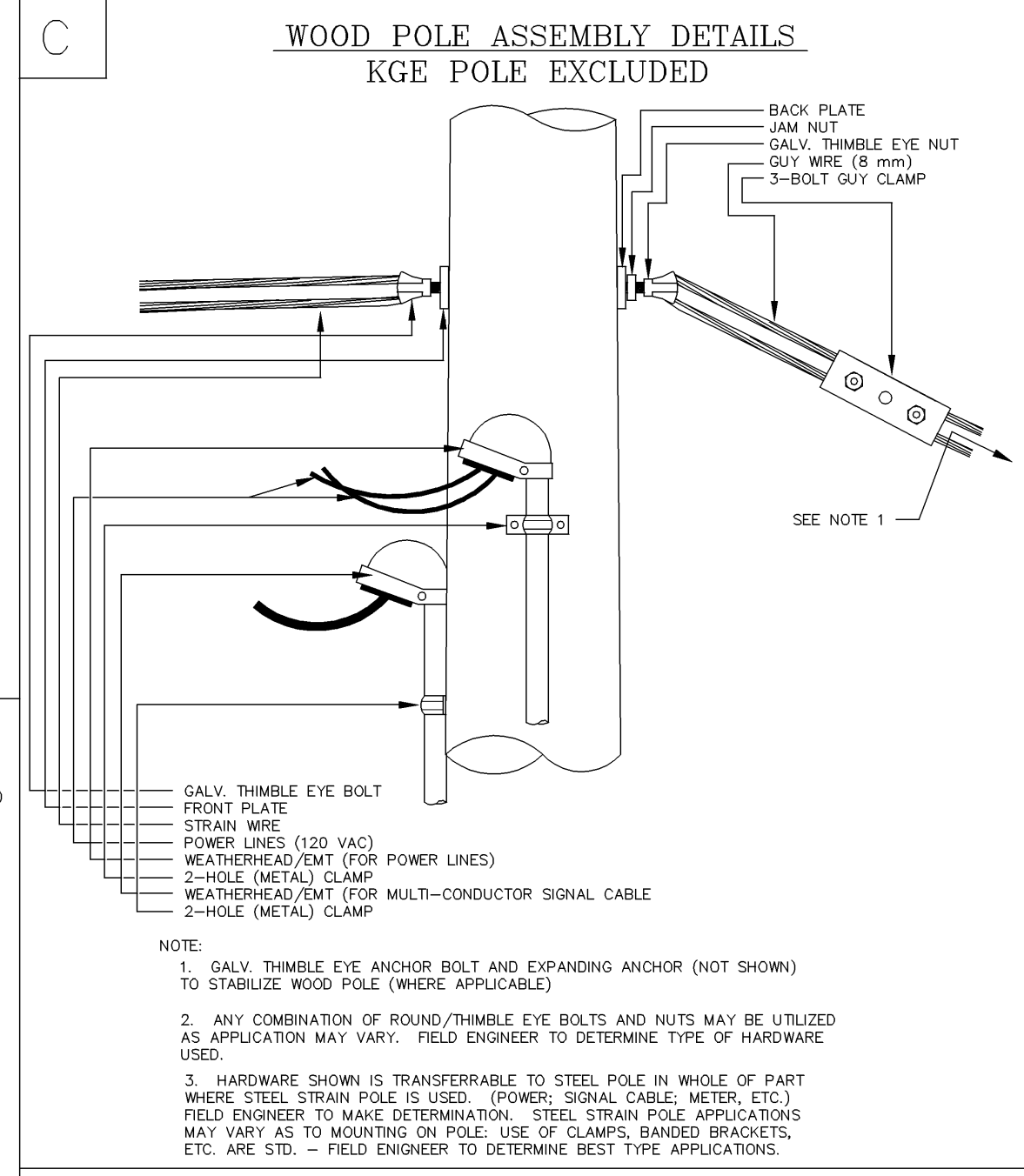
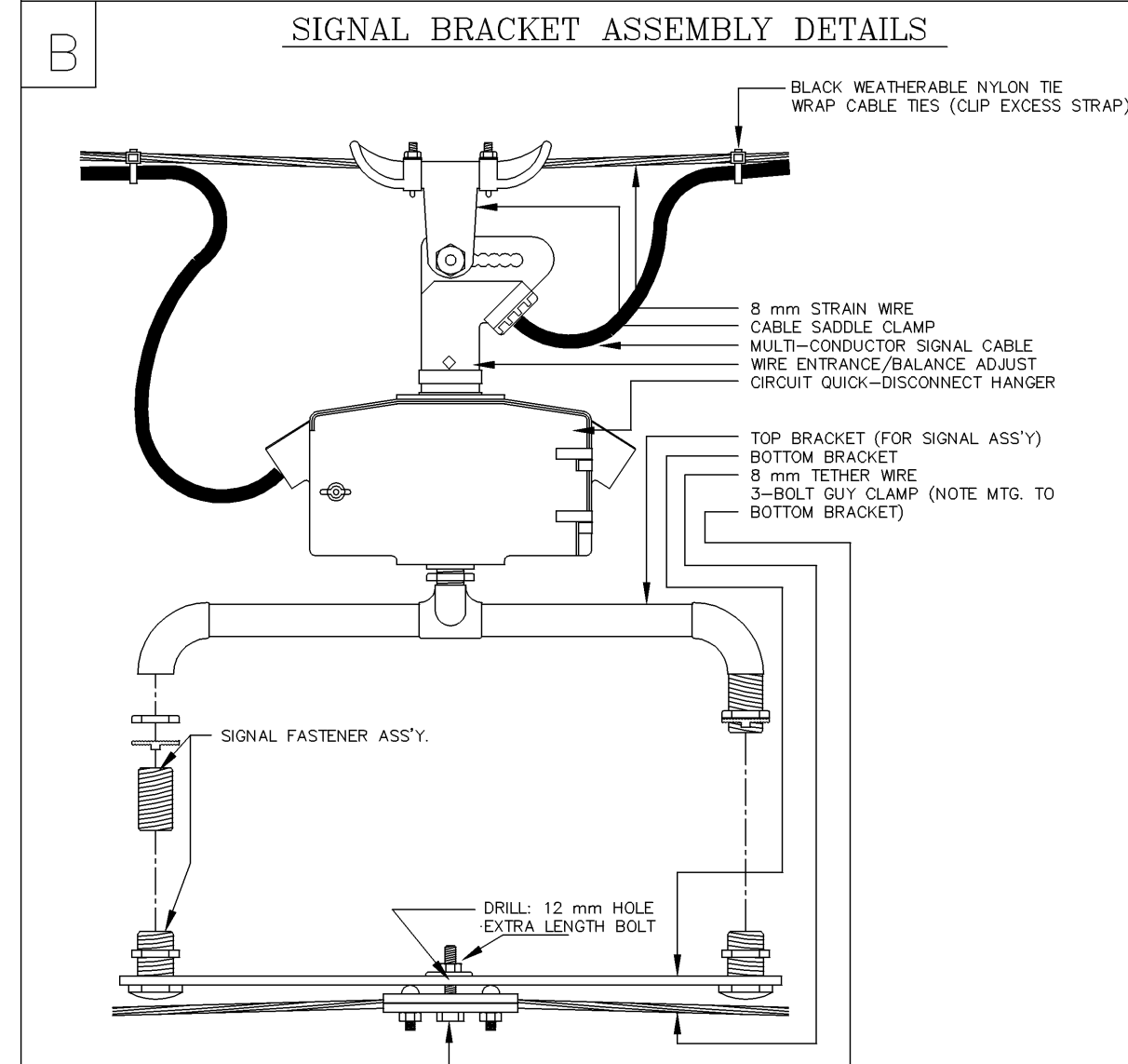
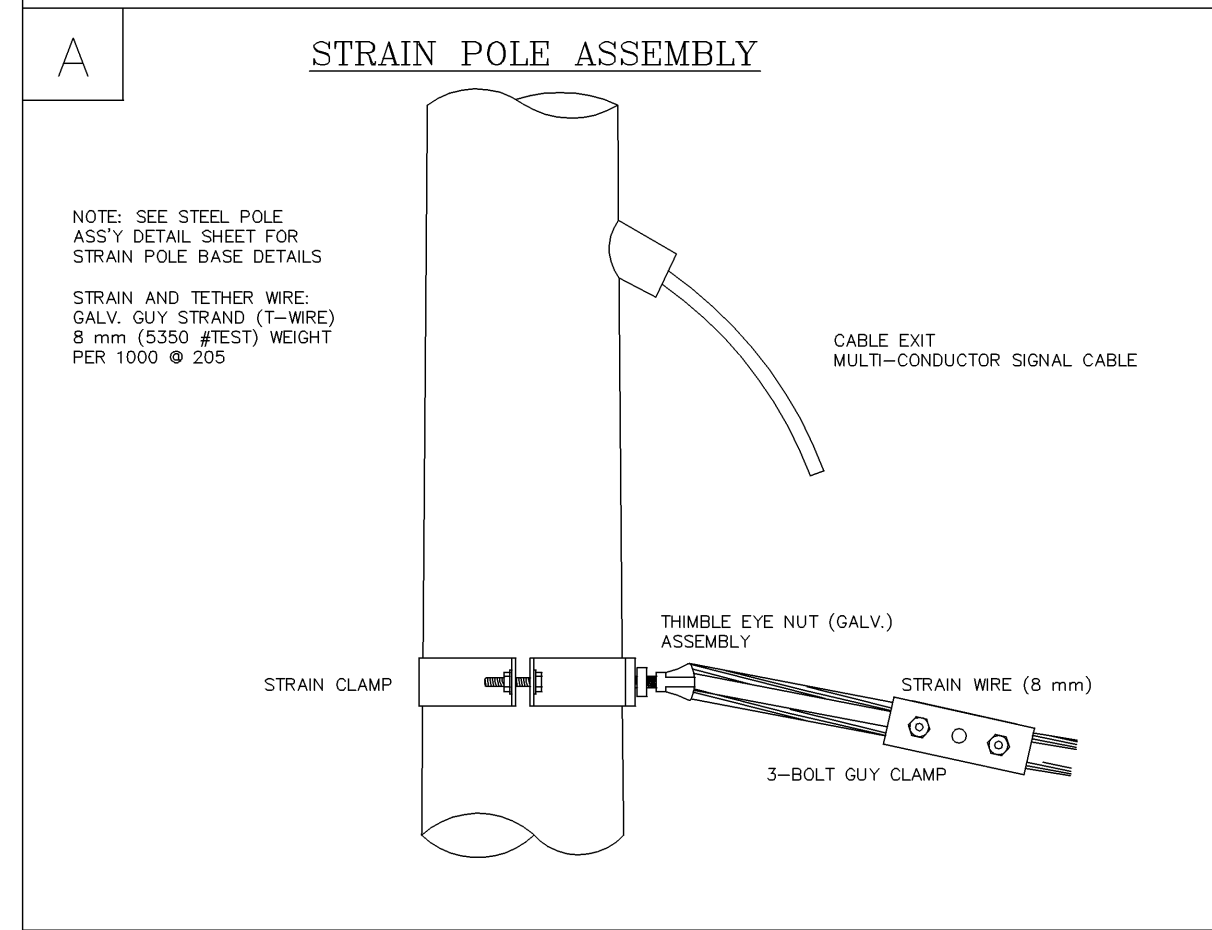
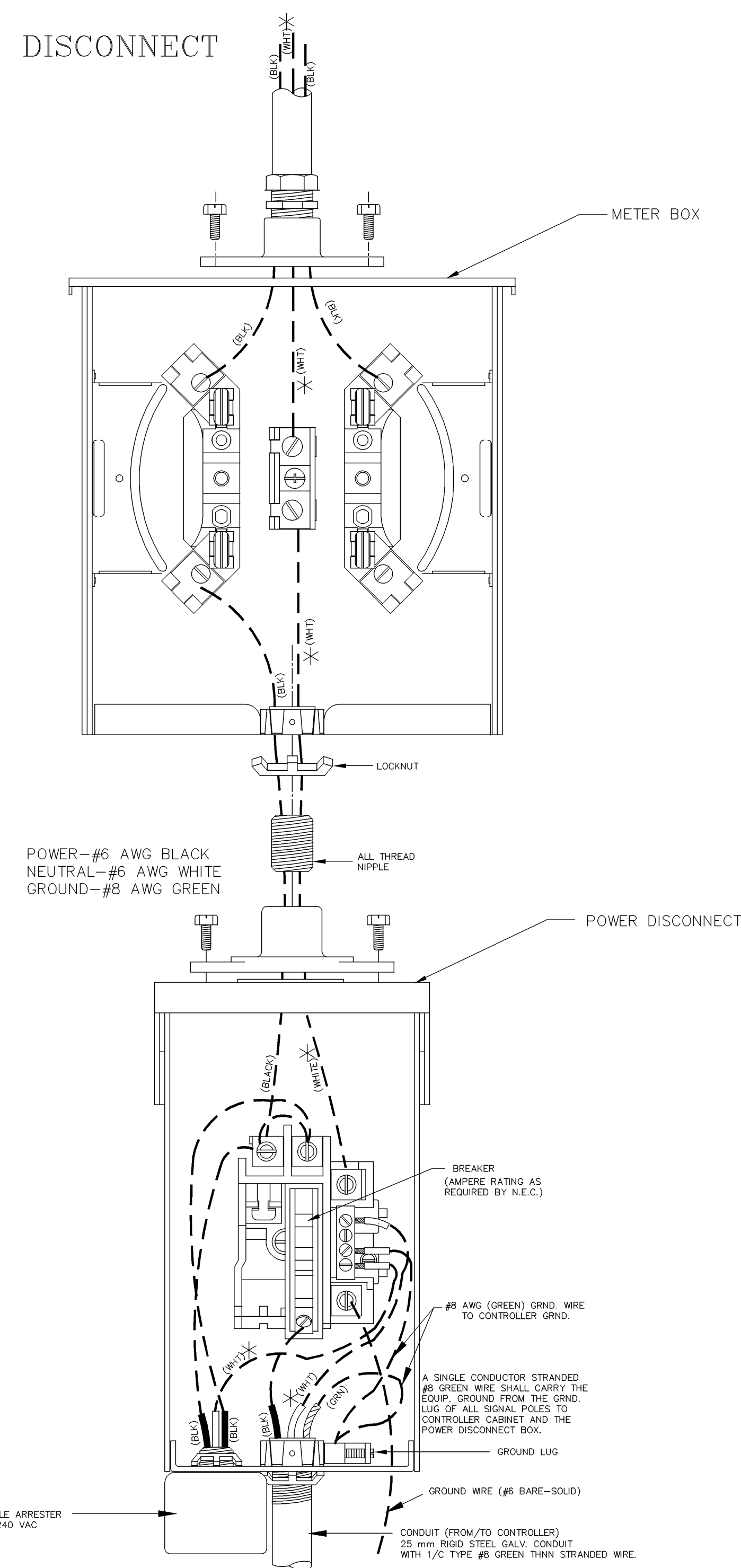
**SPANWIRE ASSEMBLY DETAILS**

1. MAX. SAG = 5% OF SPAN.
2. STANDARD BACKRAKE = 1.5'
3. HEIGHT OF STRAIN WIRE HOOK-UP TO BE DETERMINED BY FIELD ENGINEER. TRAFFIC SIGNAL CABLE TO BE SECURED TO STRAIN (SPAN) WIRE WEATHERABLE NYLON CABLE HANGERS (300 mm CTR.) DETAIL 'B'
4. TETHER CLAMP TO BE DESIGNED TO RELEASE UNDER 'HIGH WIND LOAD' TO PERMIT SIGNAL 'FREE SWING'.



**METER BOX & POWER DISCONNECT DETAILS**

\* TO BE MARKED WITH WHITE TAPE



PROJECT DESCRIPTION			
<b>POWER POLE AND SPAN POLE ASSEMBLY DETAILS</b>			
STANDARD APPLICATIONS :			
PROJECT NUMBER			
DRAWN BY: TM	APPROVED BY:	REVISED: LRB	
DATE: Feb. 96		DATE: 2/26/99	
CITY OF WICHITA DEPARTMENT OF PUBLIC WORKS			
TRAFFIC ENGINEERING DIVISION		SCALE	
RANDALL W. HOSKINS, P.E., TRAFFIC ENGINEER		NO SCALE	

T. MASON, TRAFFIC ENGINEER, 2/4/97. FILE: D-2 - PRSP-MET