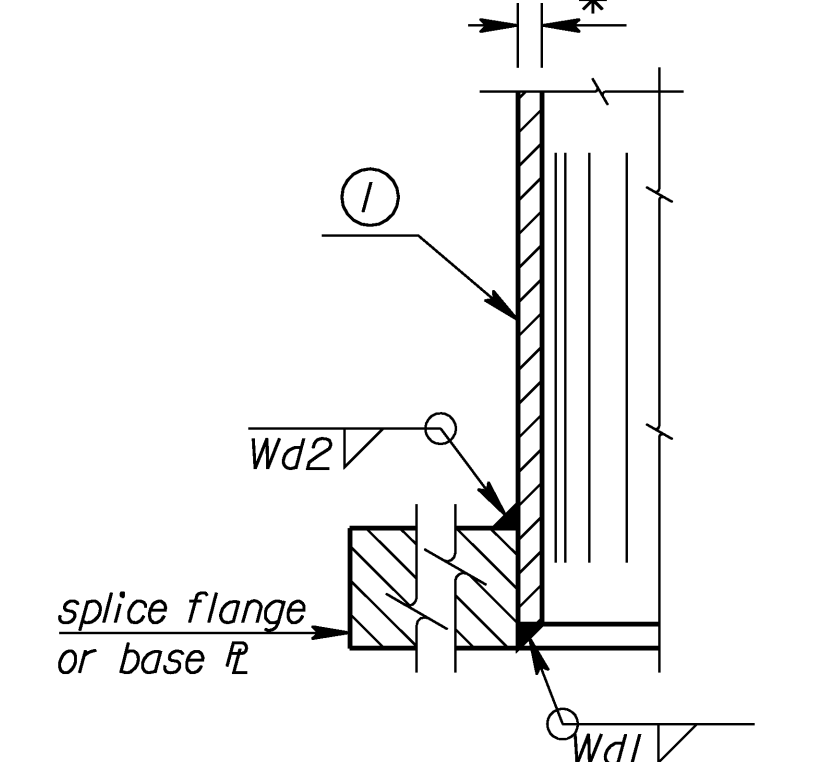
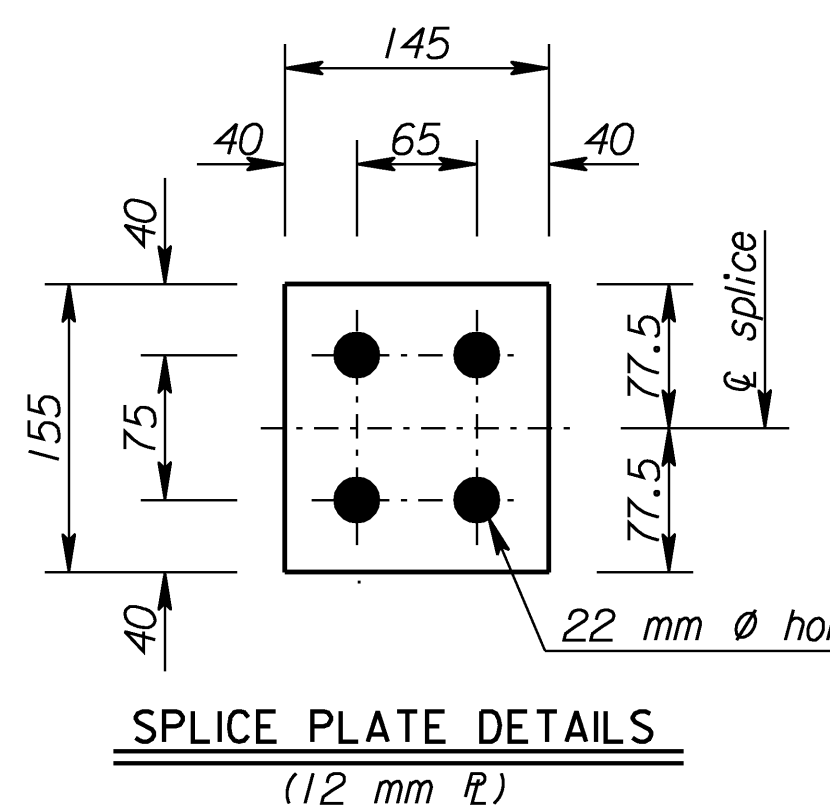
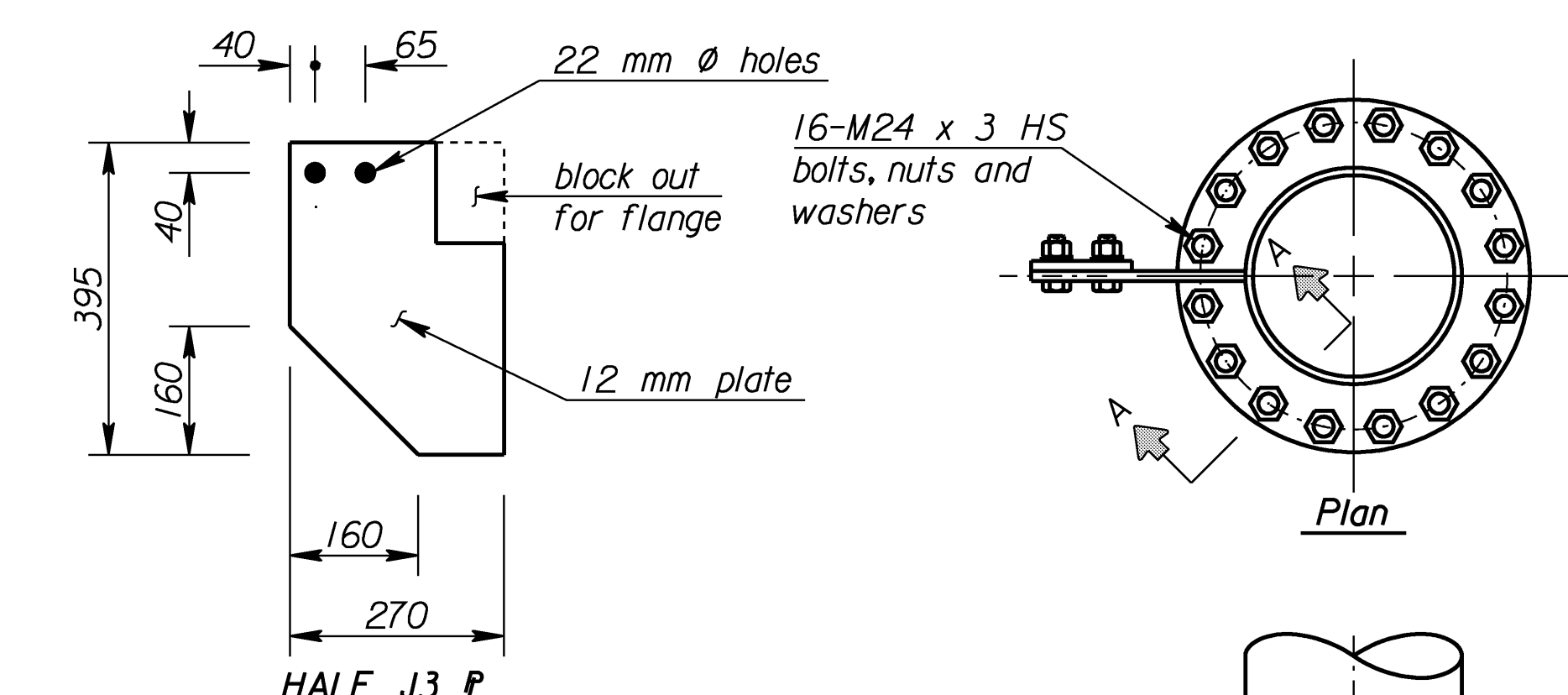
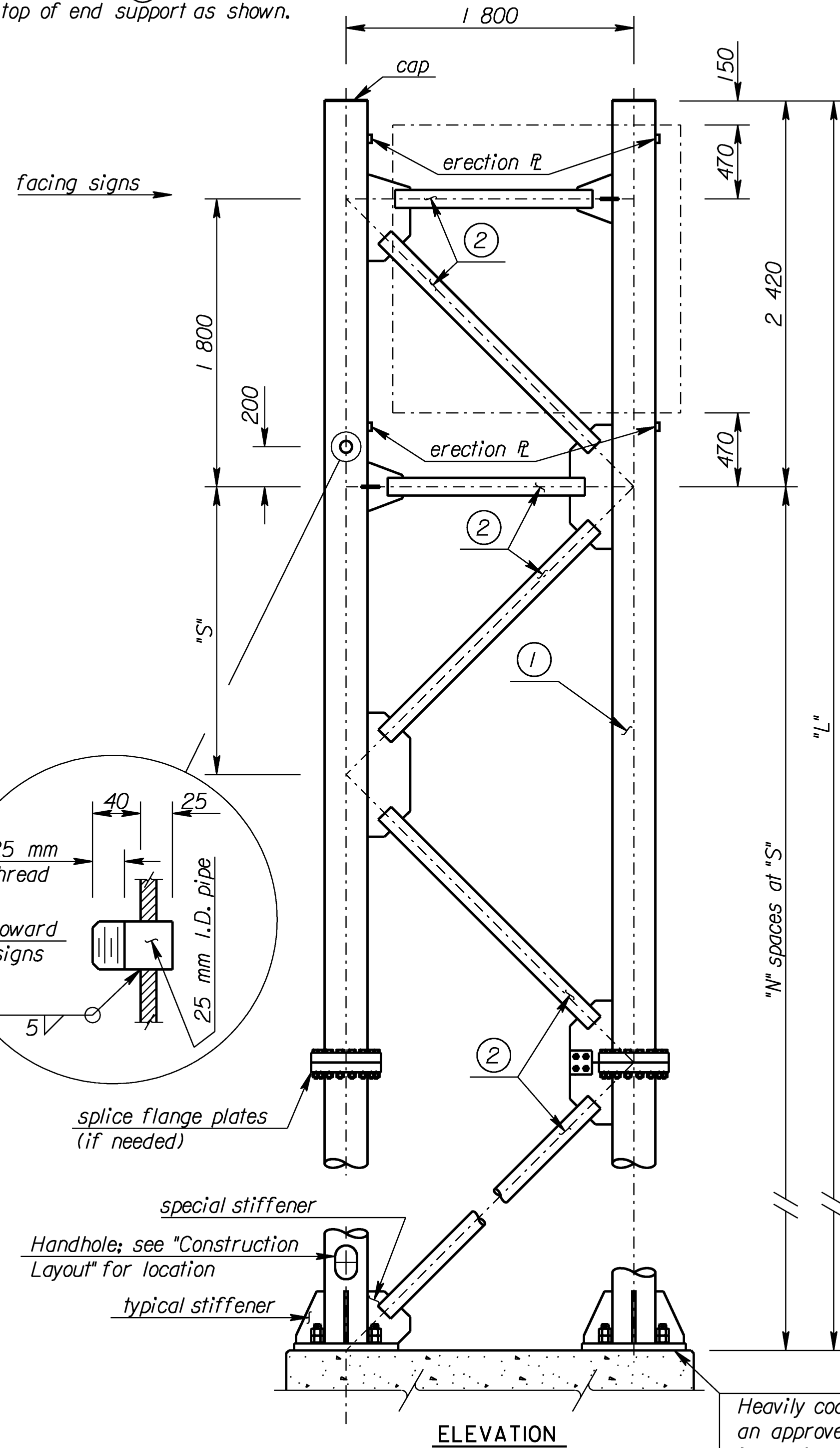
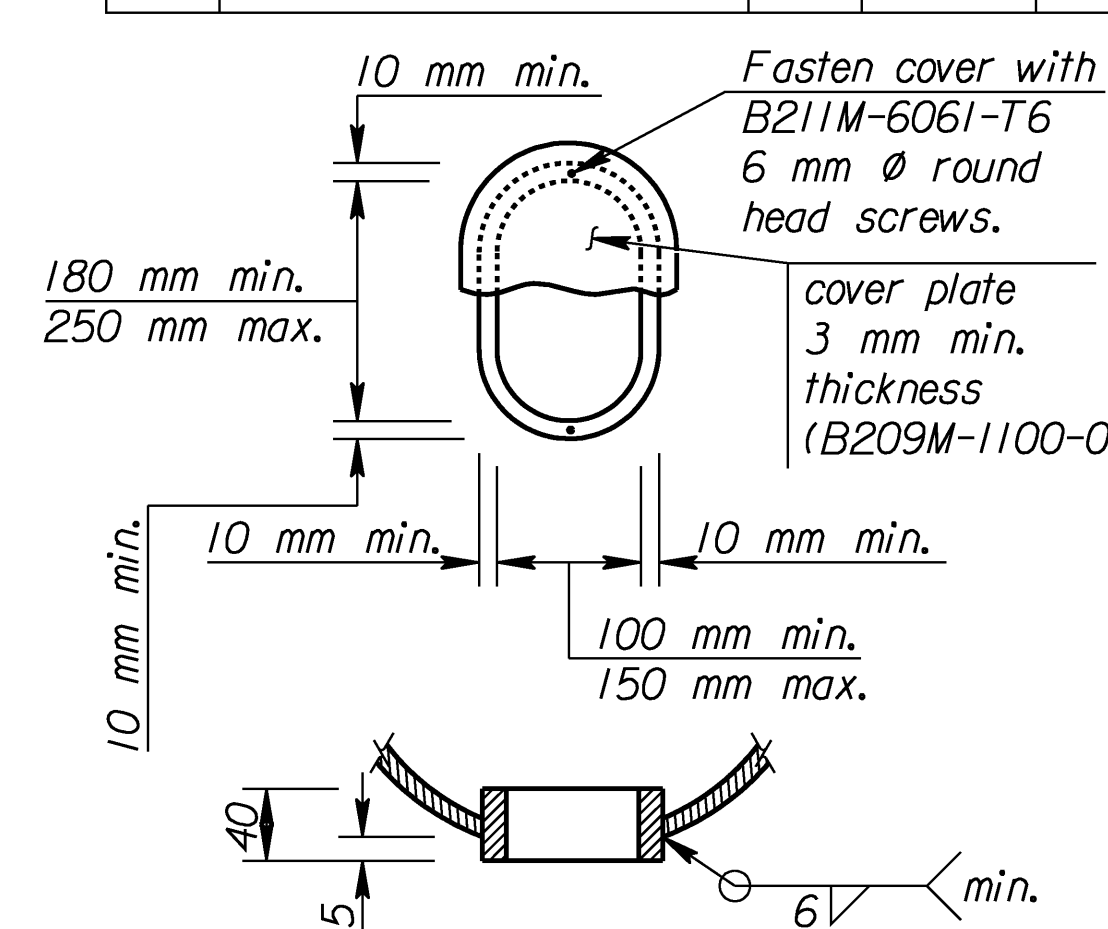
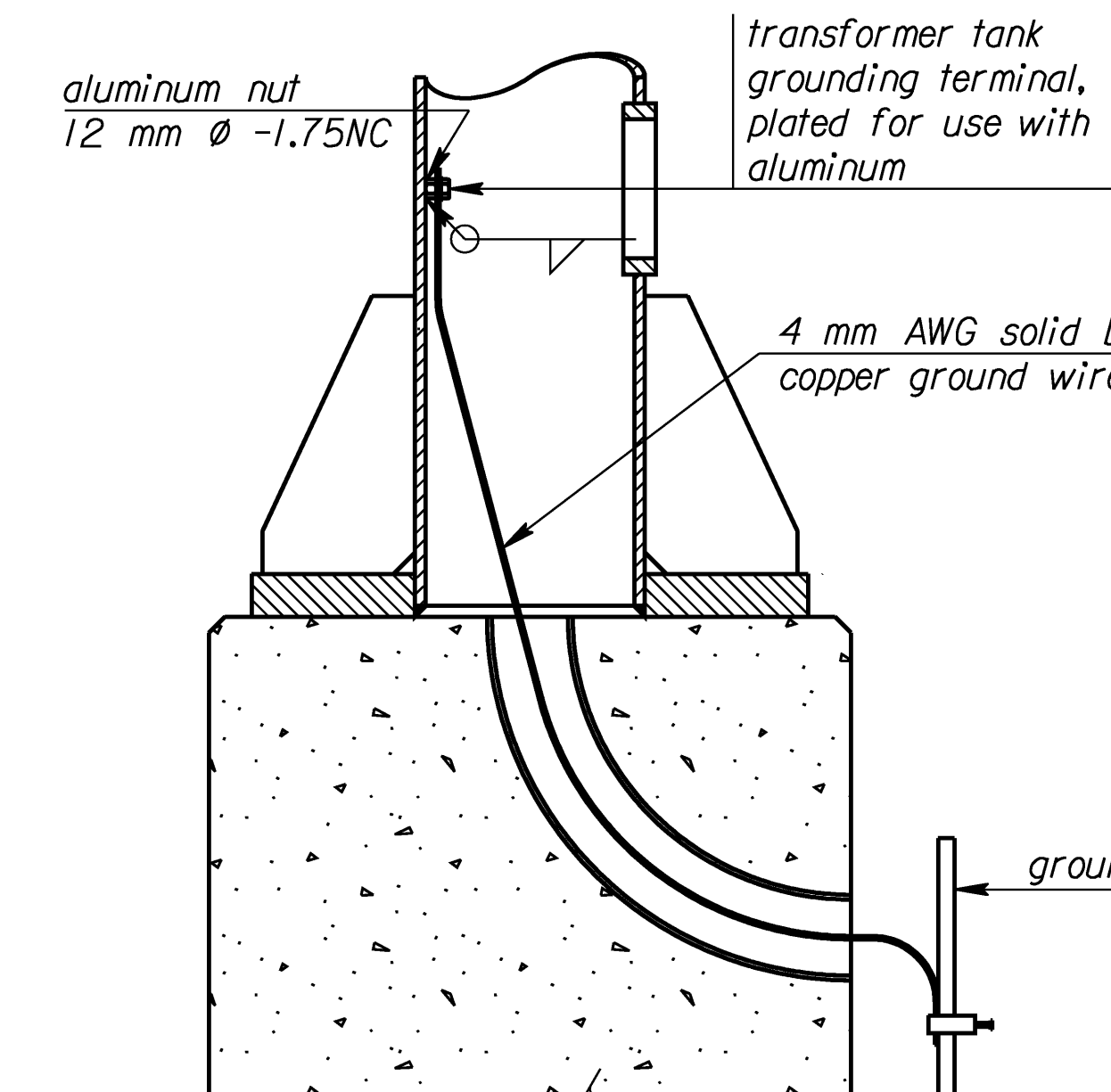
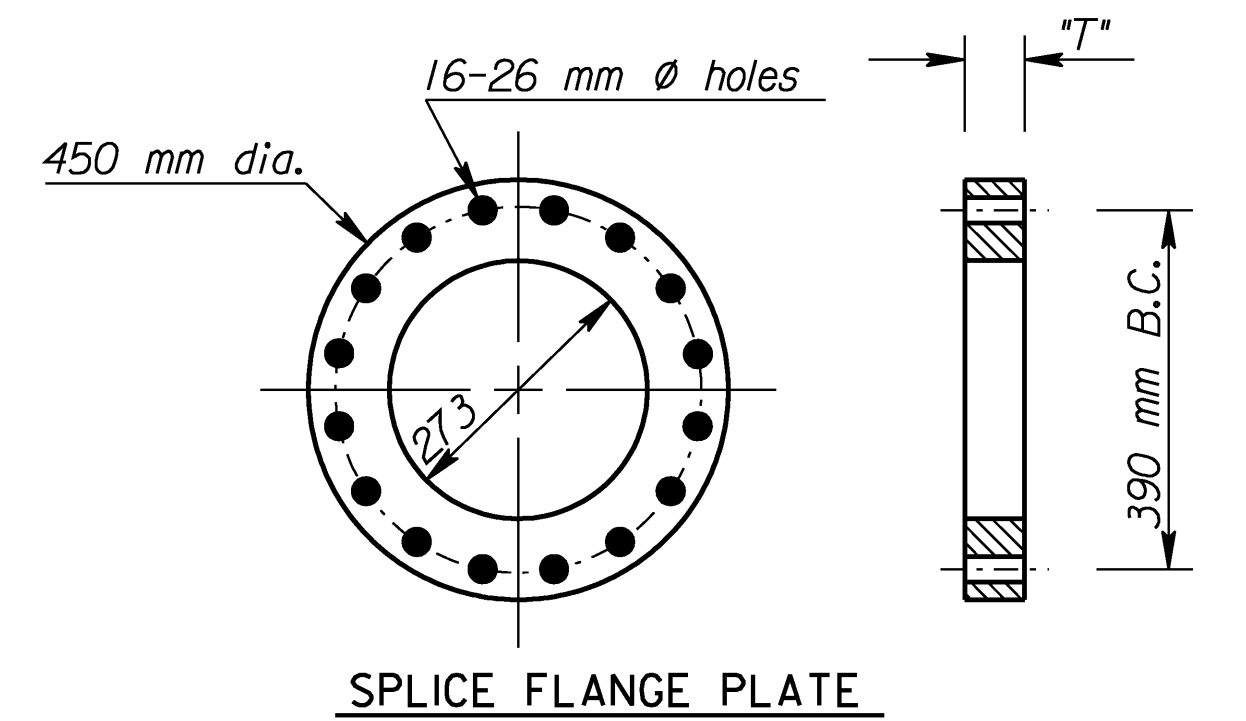


Note: Always start ② diagonal from top of end support as shown.

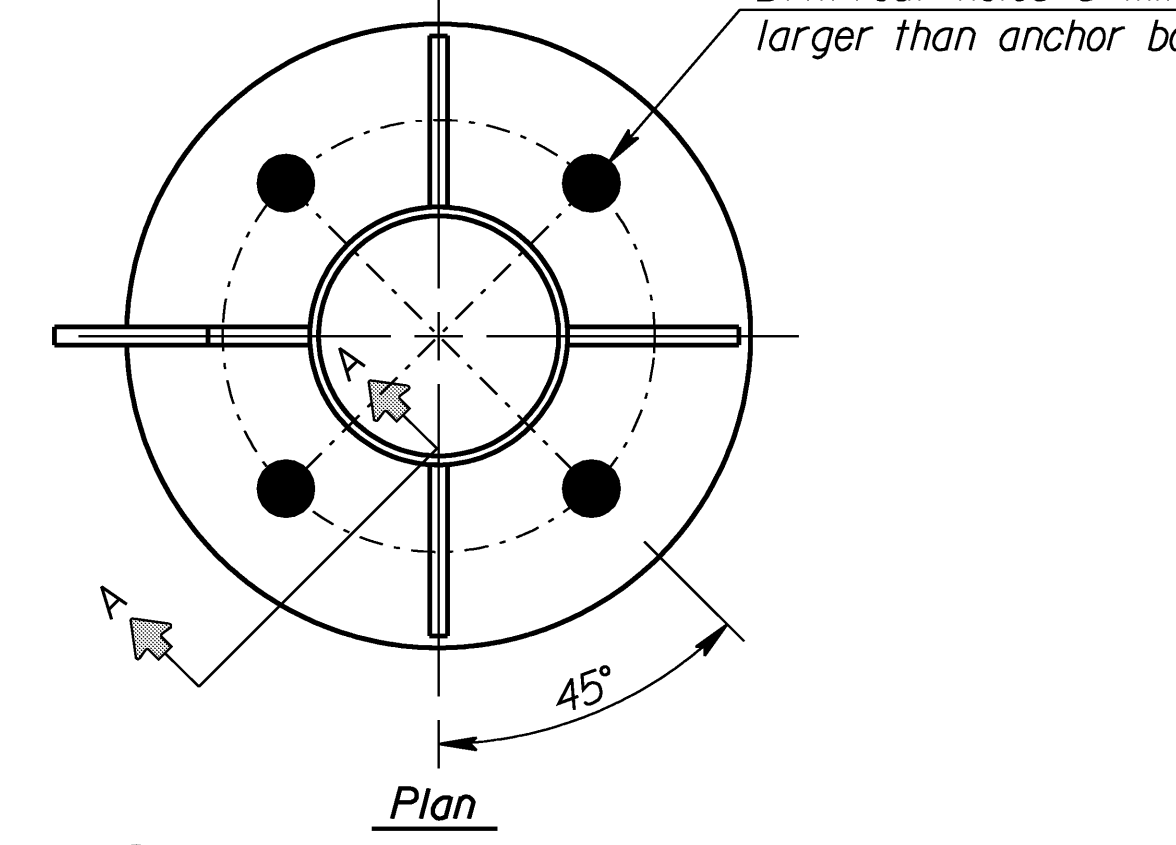
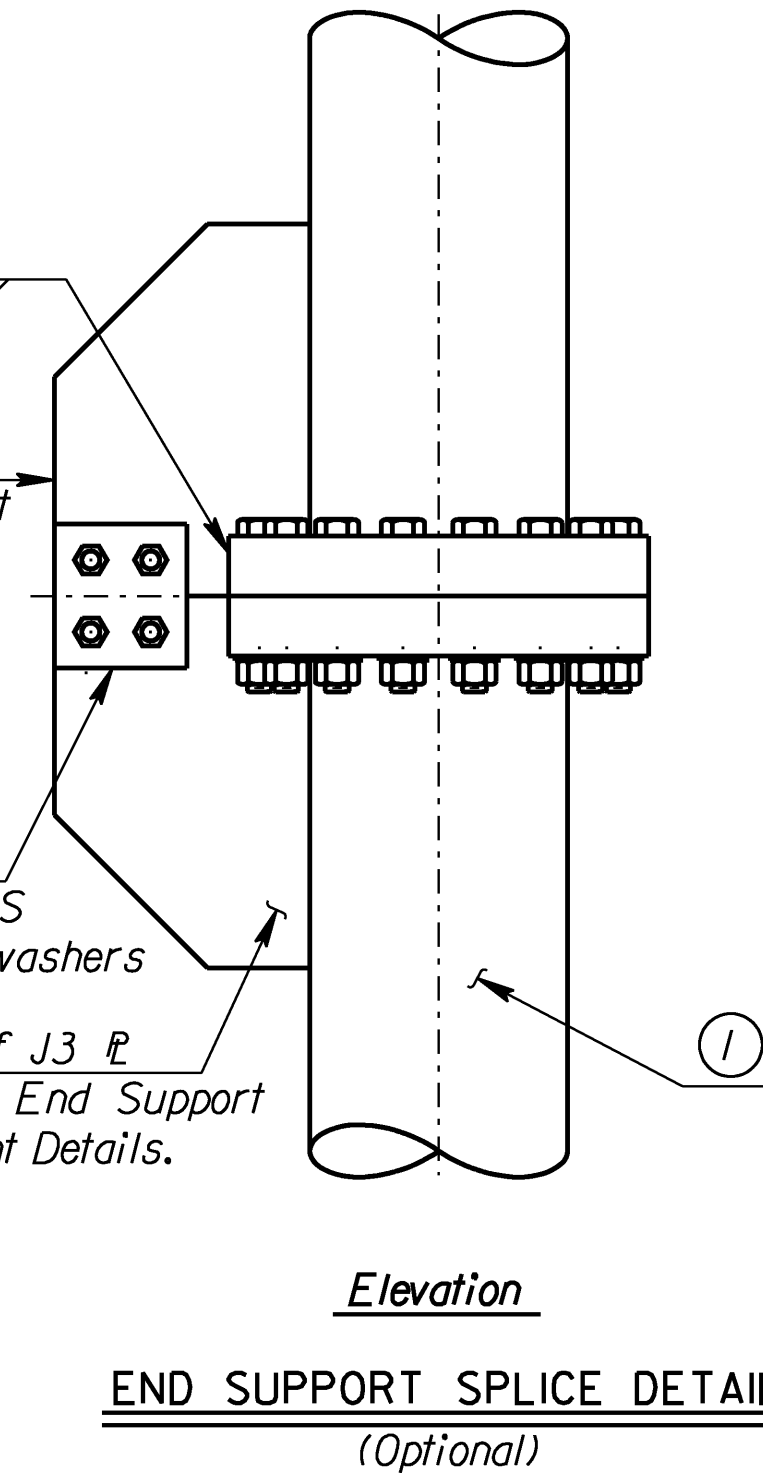


Section A-A
Make Wd1 depth equal to pipe wall thickness, build out to obtain full throat.



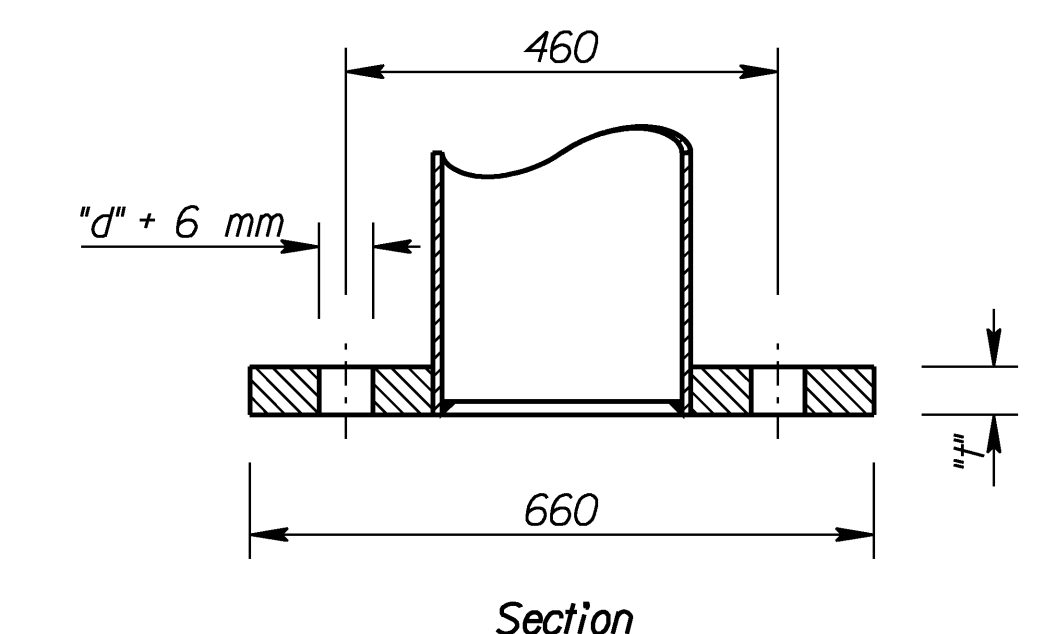
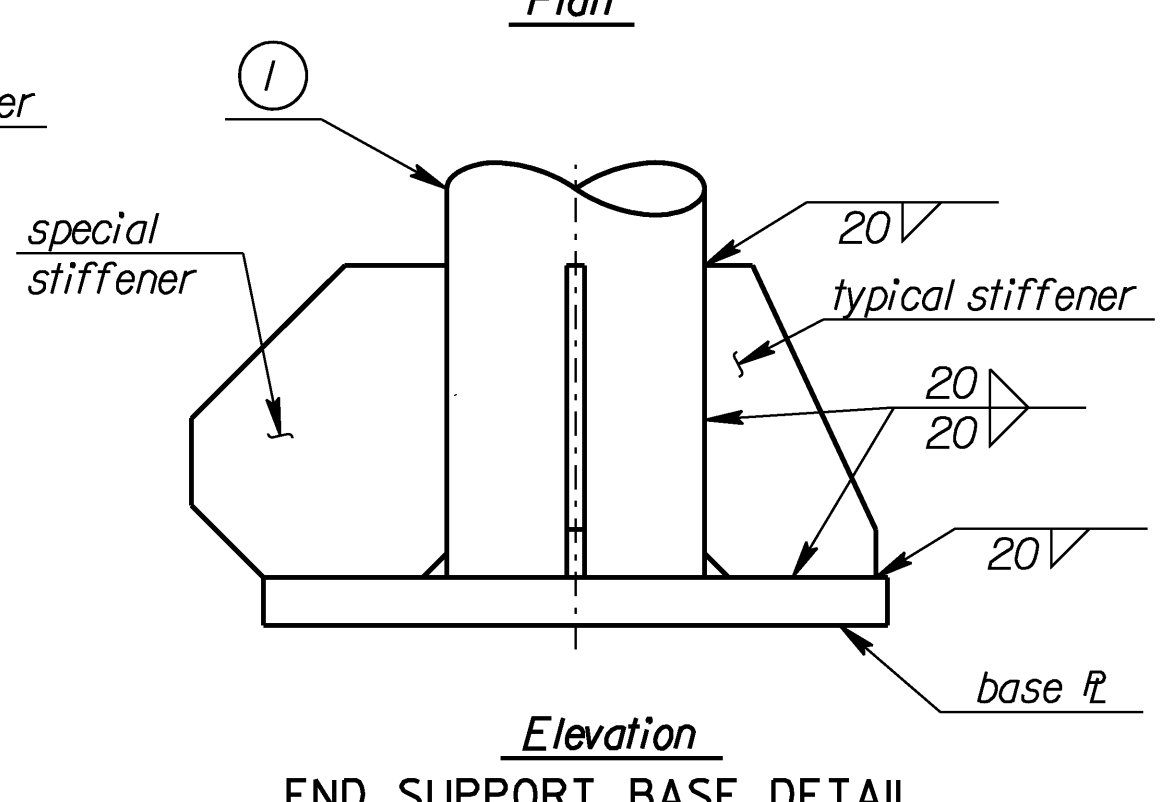
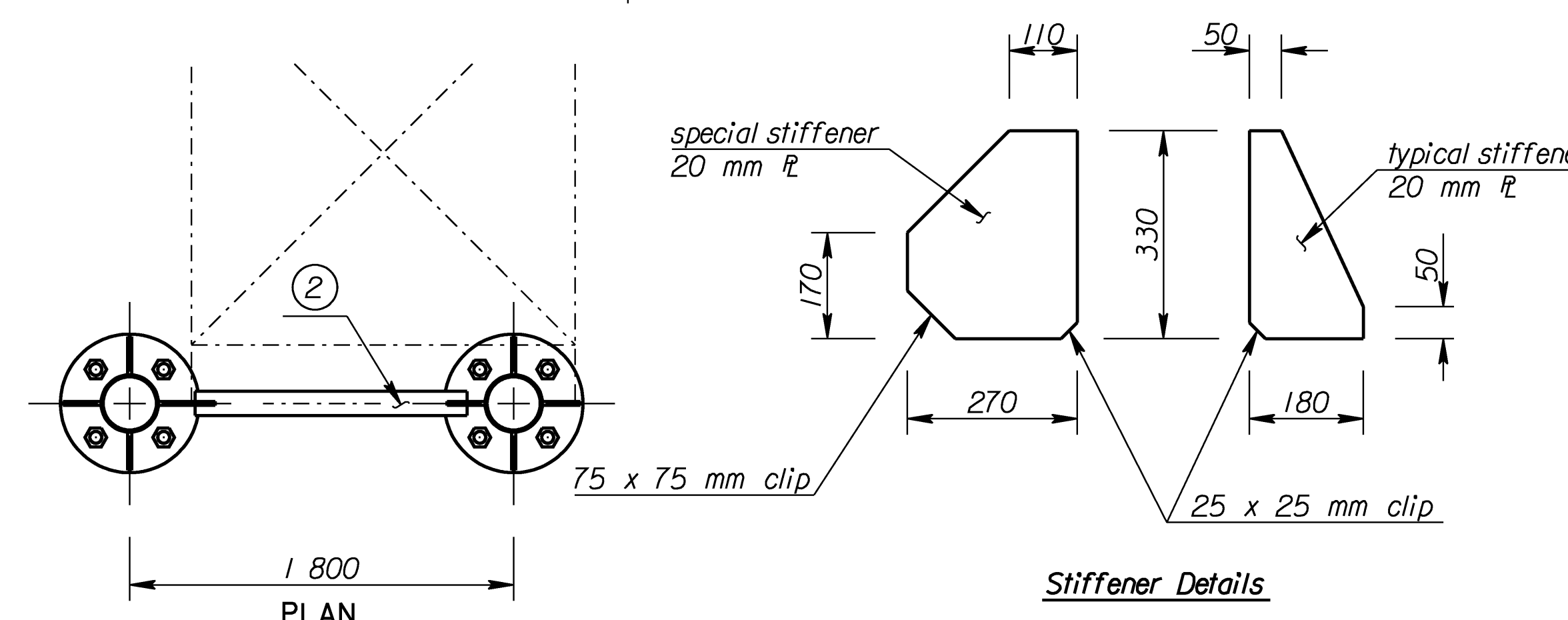
HANDHOLE DETAIL
Note: Use a handhole frame bar whose net area is at least 60 percent of the pole section removed. Maintain the pole section properties at the handhole. Build the frame from a bar conforming to ASTM B209M-6061-T6 or a casting conforming to ASTM B26-356-T6.

Member ① is 273 mm O.D. pipe.
Member ② is 114 mm O.D. pipe.



| Member ① * wall thickness | Fillet Weld size Wd2 | Anchor Bolt "d" | Base flange "t" | Splice flange "T" |
|---------------------------|----------------------|-----------------|-----------------|-------------------|
| 4.19 | 6 | 30 | 30 | 40 |
| 7.80 | 10 | 36 | 45 | 50 |
| 9.27 | 11 | 42 | 50 | 55 |
| 12.7 | 14 | 48 | 50 | 65 |
| 15.1 | 16 | 56 | 60 | 70 |
| 18.2 | 20 | 56 | 70 | 80 |

* See "Construction Layout" for wall thickness, "N", "S", and "L".



Std. Base File: sl15ibsi.dgn - Plot 1
 Plotted By: bond
 File: F:\Working\82580\SL_Structures\SL-825801-15ibsi.dgn
 Plot Date: 6/29/2005

| NO. | DATE | REVISIONS | BY | APP'D |
|--|------|------------|-----|------------|
| KANSAS DEPARTMENT OF TRANSPORTATION STANDARD STRUCTURAL SIGN SUPPORTS SPAN TYPE OVERHEAD ALUMINUM ALTERNATE END SUPPORT FRAMING PLAN AND SPLICE DETAILS SL15IB-01SI | | | | |
| DESIGNED | BFM | DETAILED | DDP | QUANTITIES |
| DESIGN CK. | RDH | DETAIL CK. | RDH | QUAN. CK. |