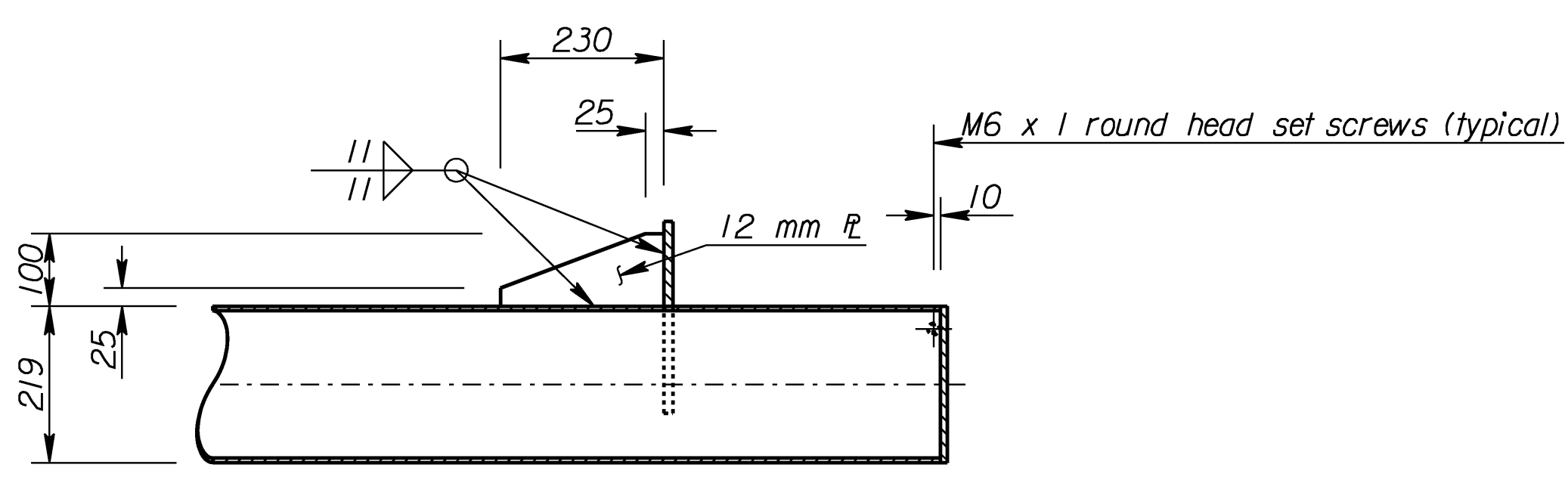
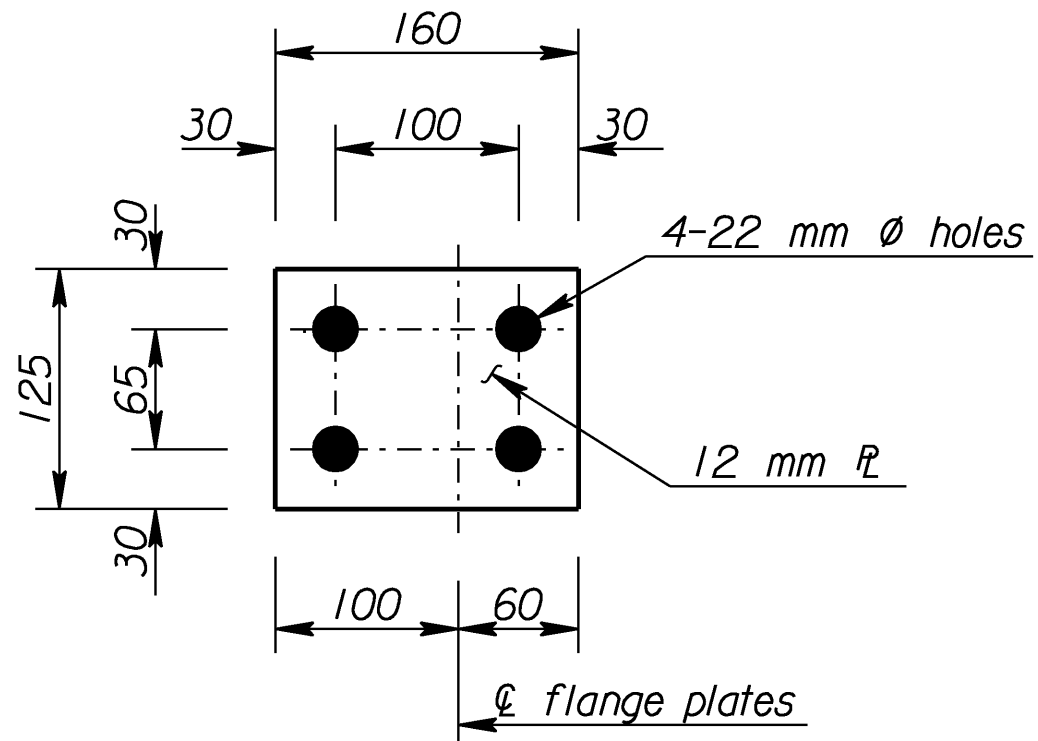


End View

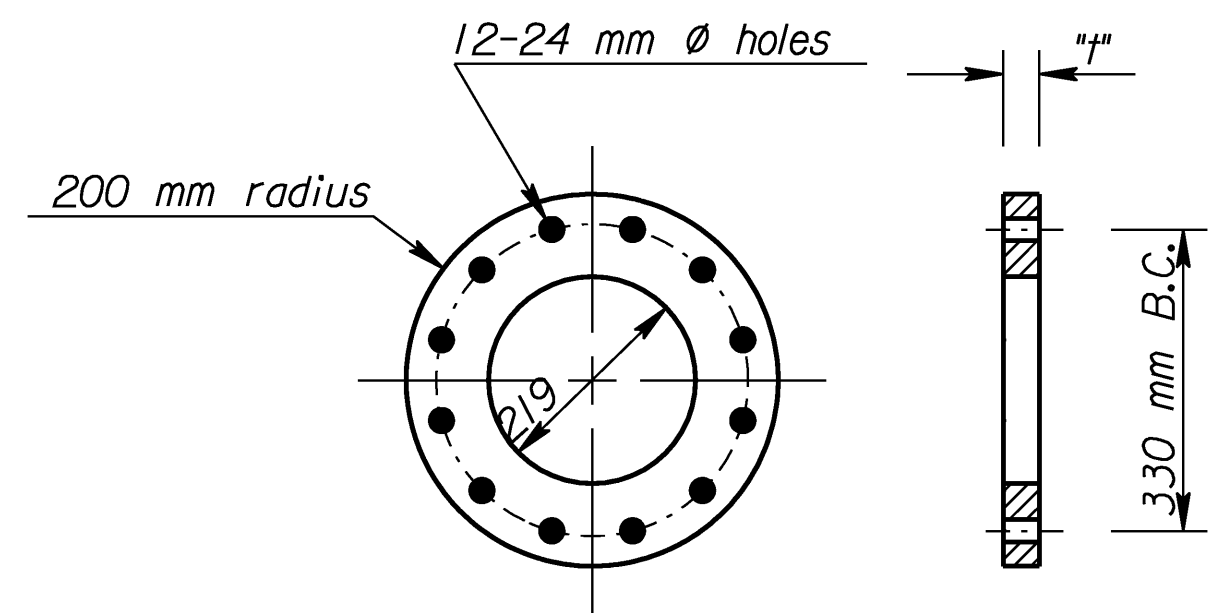


Section A-A

TYPE I JOINT DETAILS

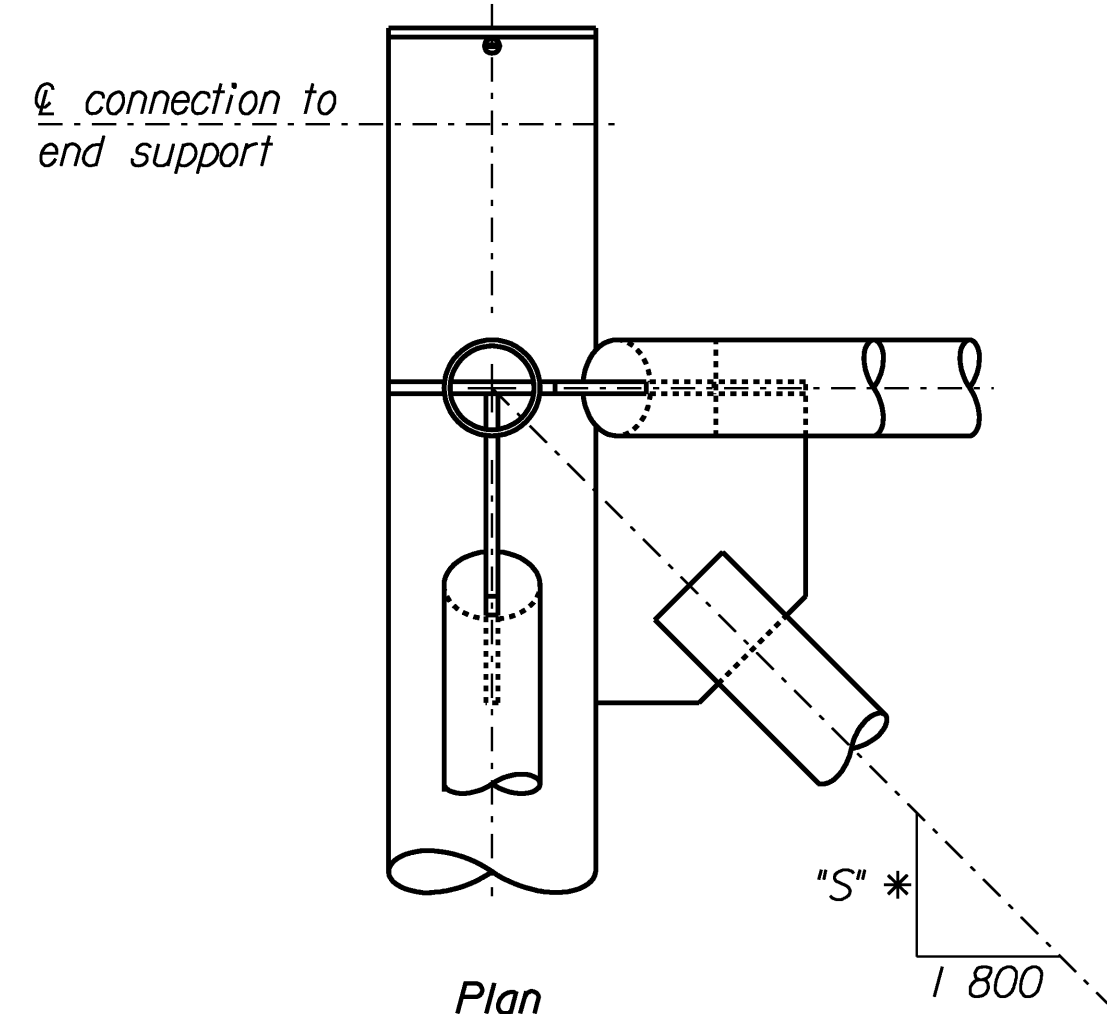


SPLICE PLATE DETAILS

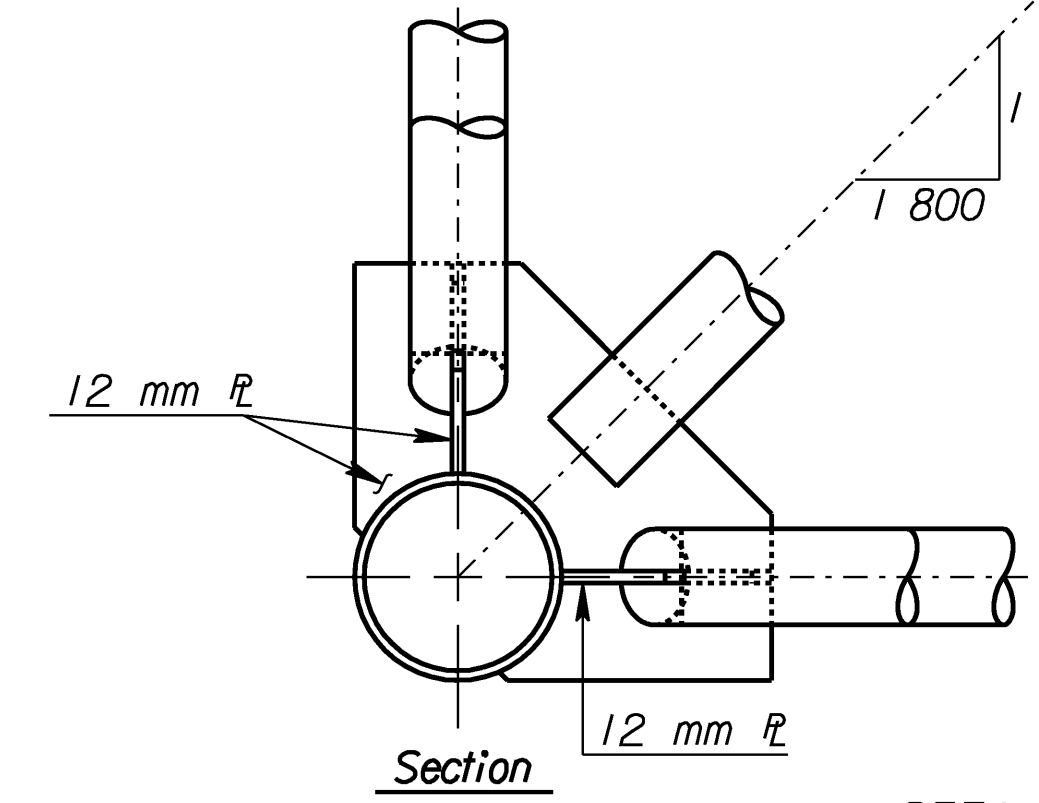


ALTERNATE FLANGE SPLICE PLATE

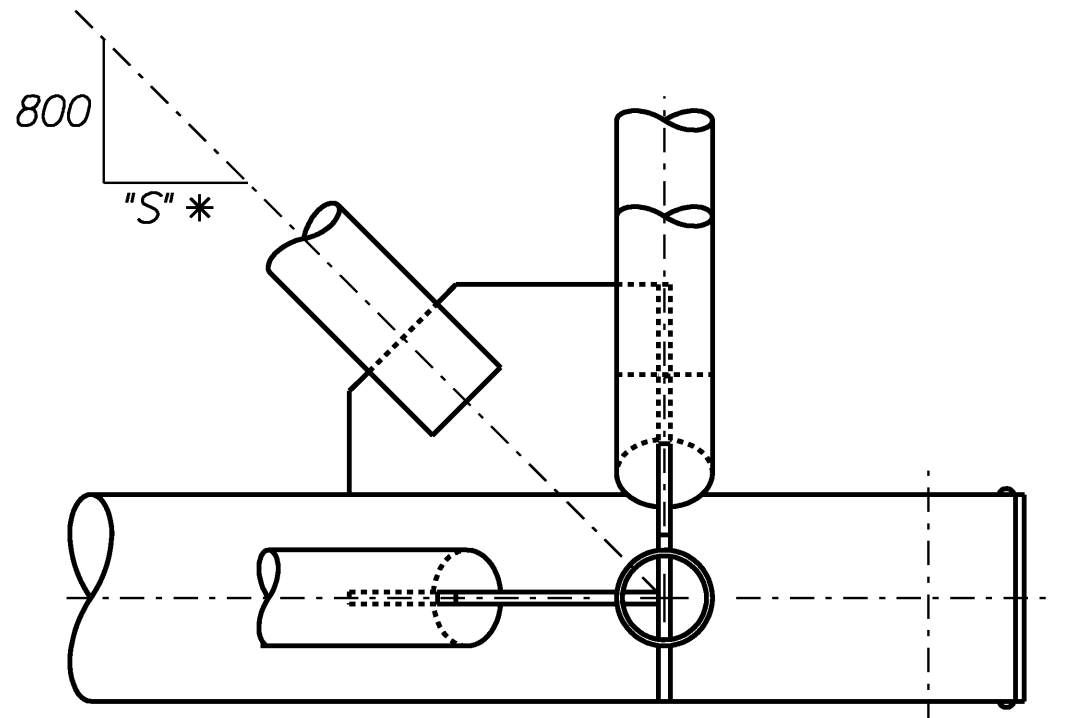
Material: ASTM B209M Alloy 6061-T6



Plan

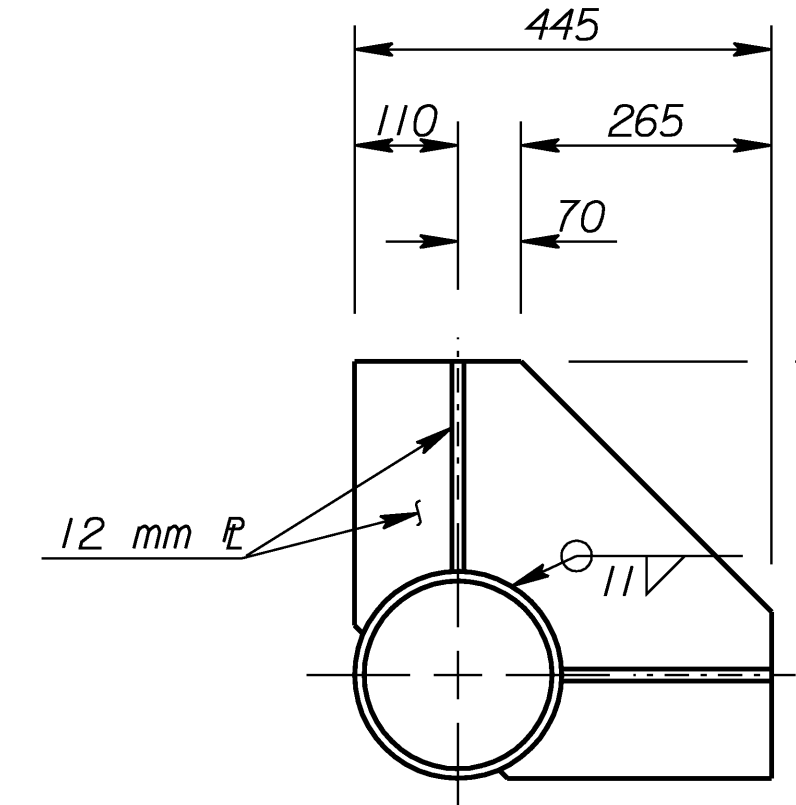


Section

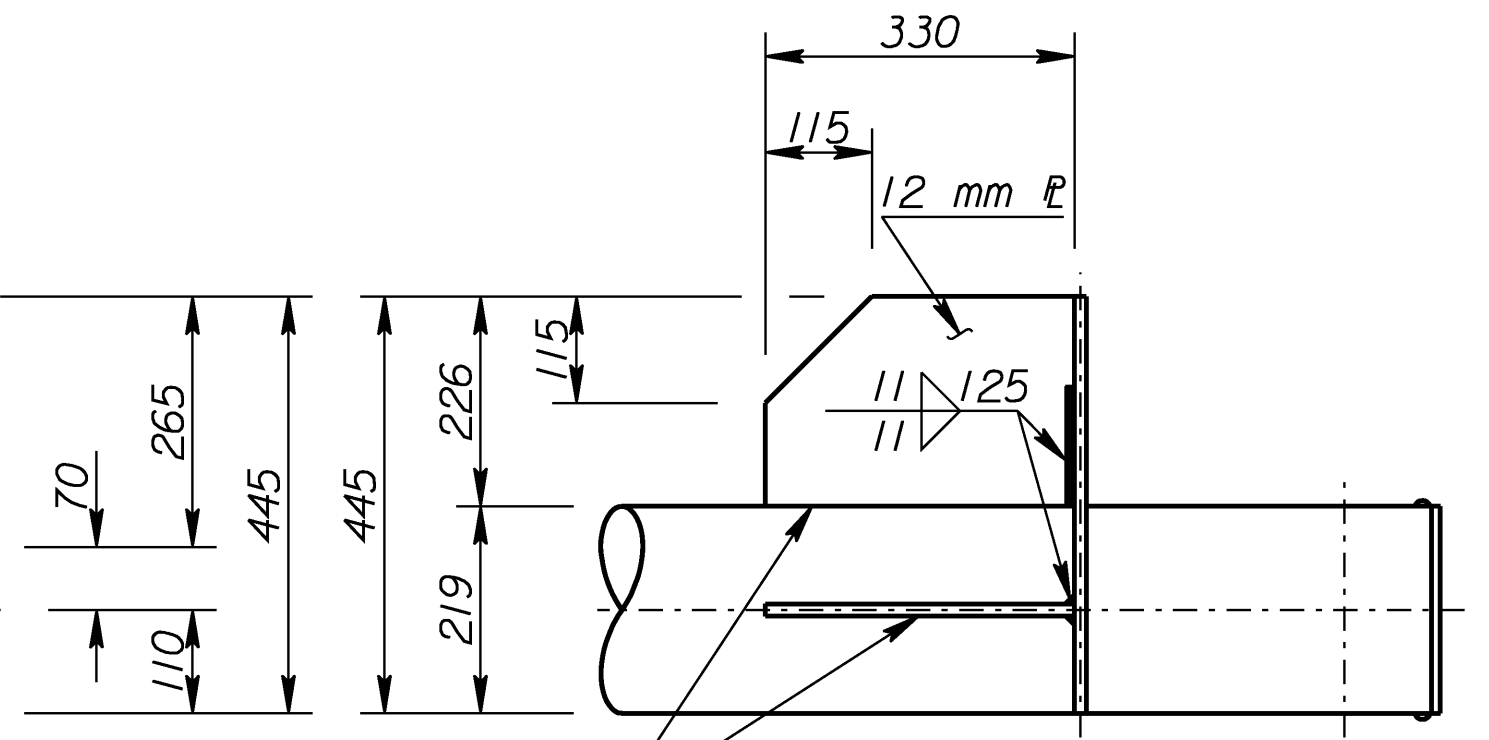


Side Elevation

DETAILS END JOINT TYPE II

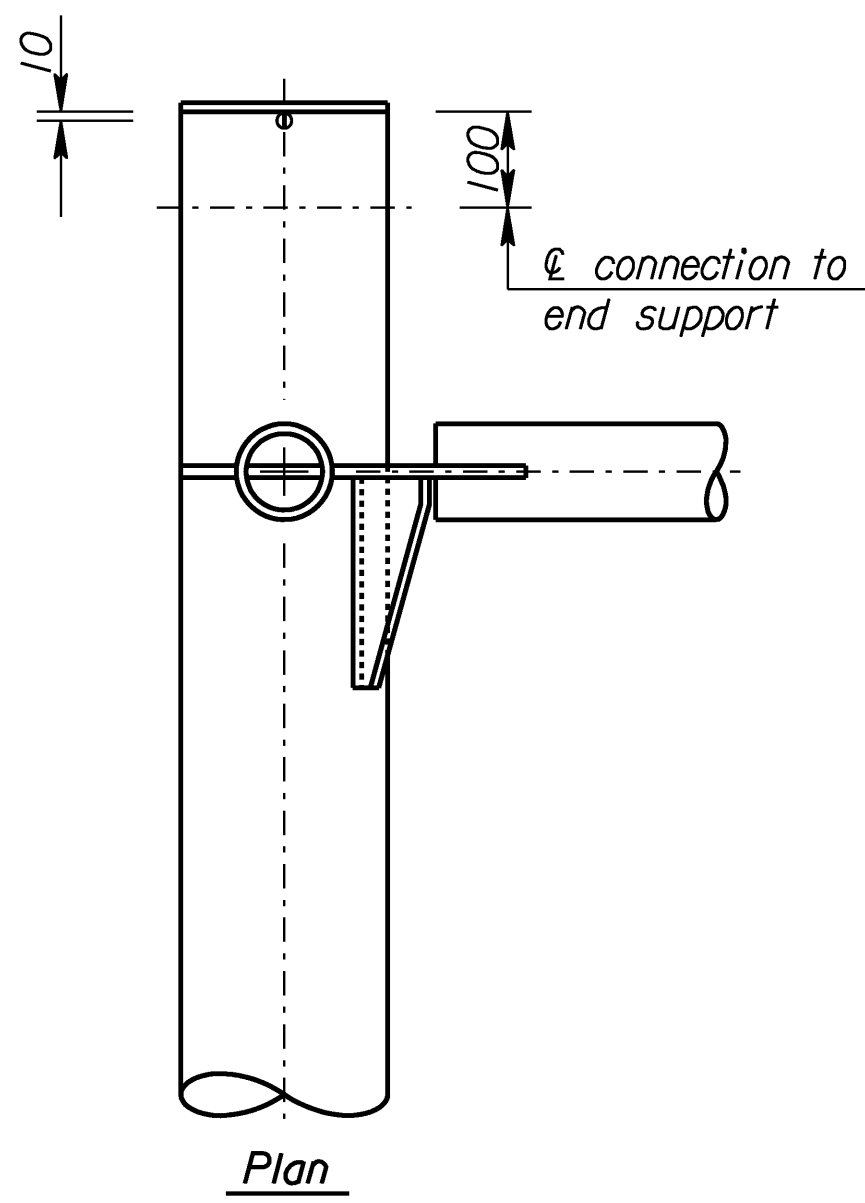


End View

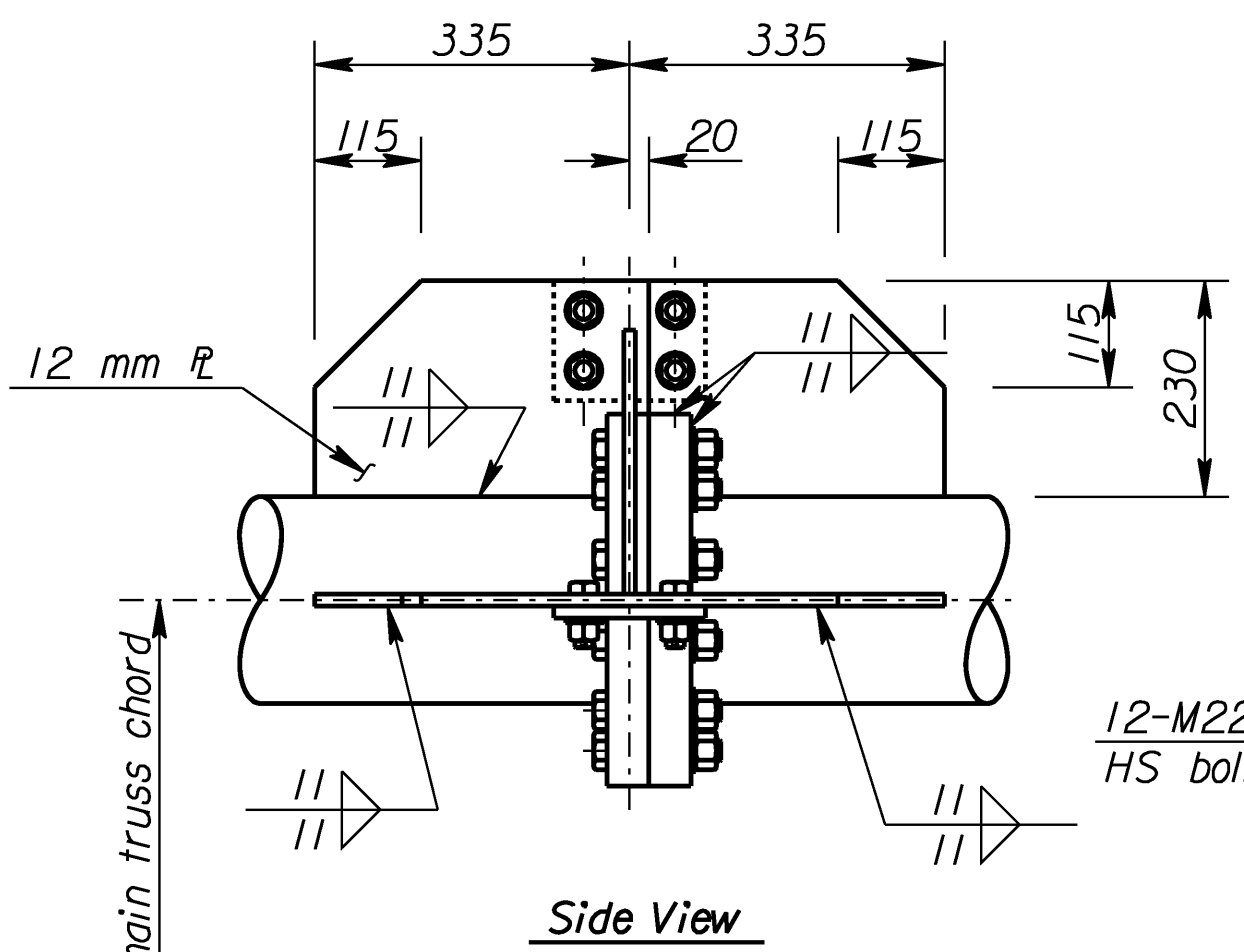


Side View

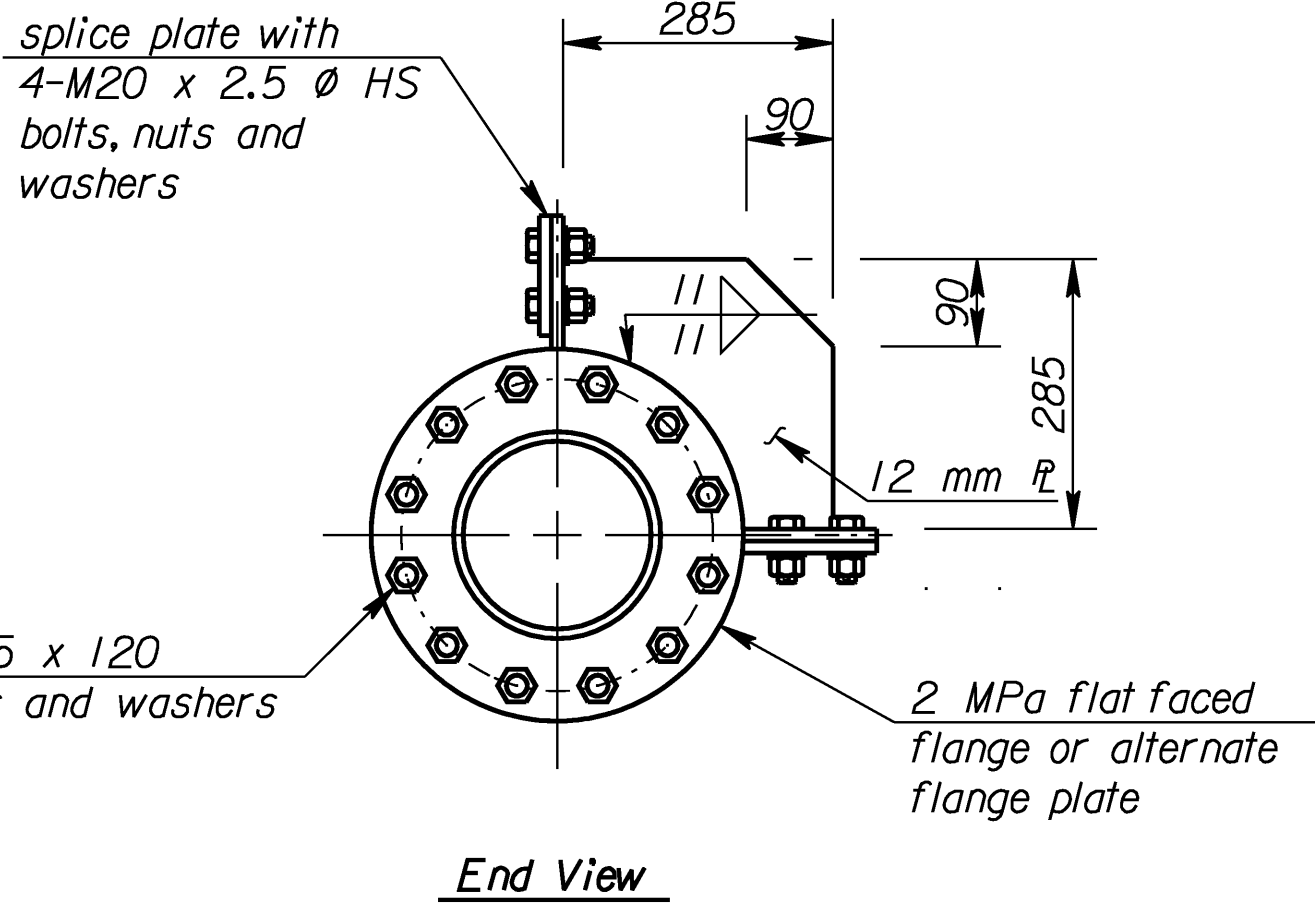
TYPE II JOINT DETAILS



Plan



Side View



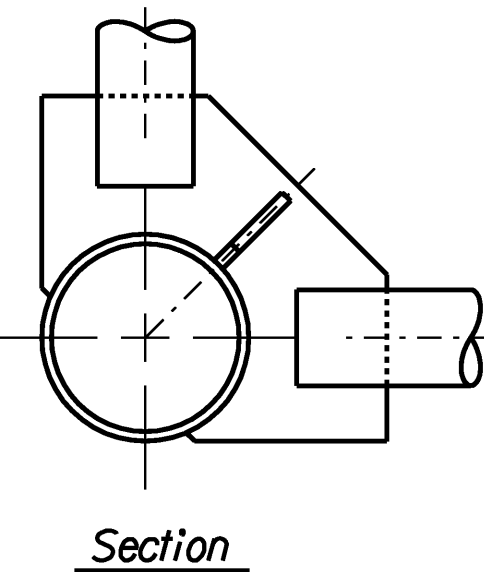
End View

TRUSS SPLICE DETAILS

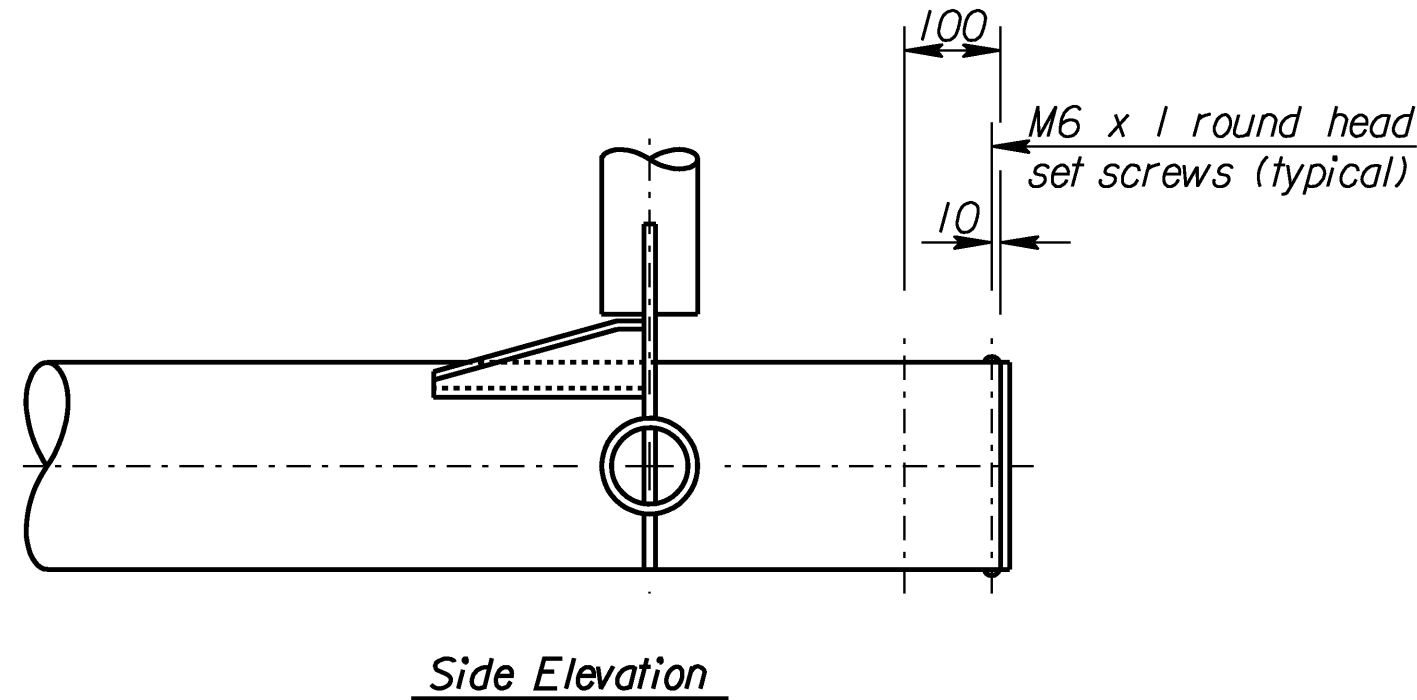
12-M22 x 2.5 x 120 HS bolts, nuts and washers

2 MPa flat faced flange or alternate flange plate

Std. Base File: sl151bsi.dgn - Plot 4
 Plotted By: bond
 File: F:\Working\825801\SL_Structures\SL-825801-151bsi.dgn
 Plot Date: 6/29/2005



Section

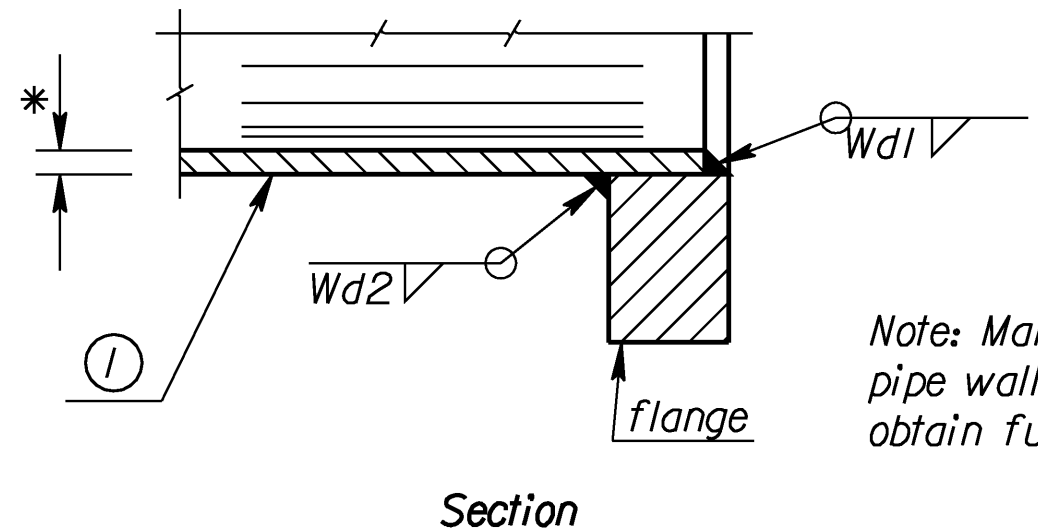


Side Elevation

DETAILS END JOINT TYPE I

Member (1)* wall thickness	Fillet Weld size Wd2	Splice R "r"
3.76	5	38
6.35	8	45
8.18	10	50
10.3	11	60
12.7	14	70

* See "Construction Layout" for wall thickness and "S"



Section

Note: Make Wd1 depth equal to pipe wall thickness, build out to obtain full throat.

NO.	DATE	REVISIONS	BY	APP'D
KANSAS DEPARTMENT OF TRANSPORTATION STANDARD STRUCTURAL SIGN SUPPORTS SPAN TYPE OVERHEAD ALUMINUM ALTERNATE TRUSS END JOINT AND SPLICE DETAILS SL151B-04 SI				
FHWA APPROVAL		4-10-97	APP'D	Kenneth F. Hurst
DESIGNED	BFM	DETAILED	DDP	QUANTITIES
DESIGN CK.	RDH	DETAIL CK.	RDH	QUAN. CK.
			CADD	DJE
			CADD CK.	LES