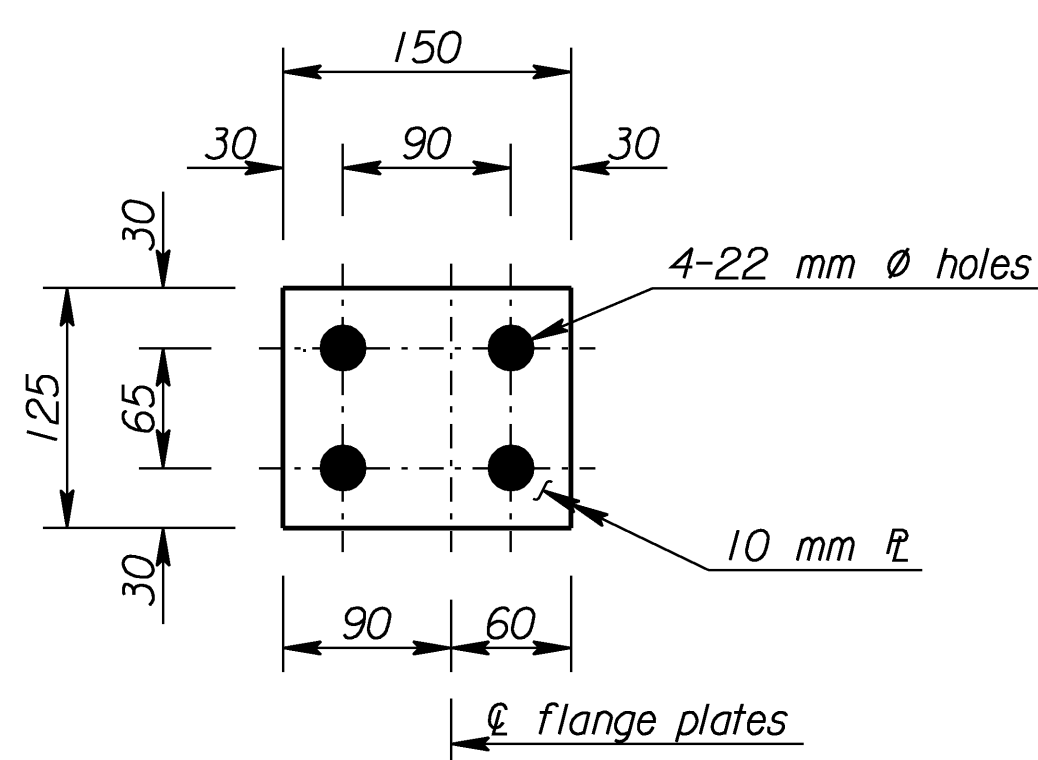
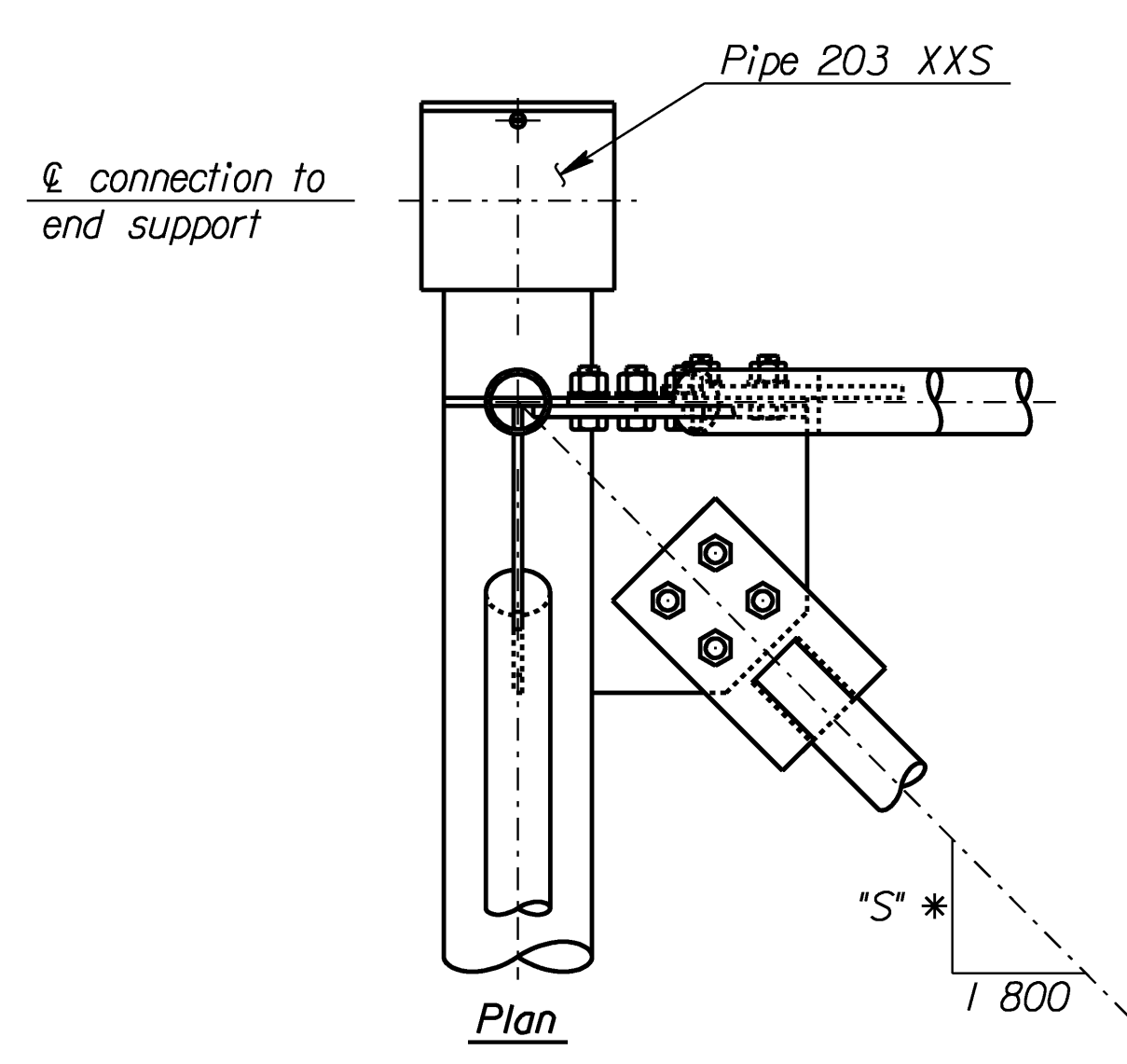


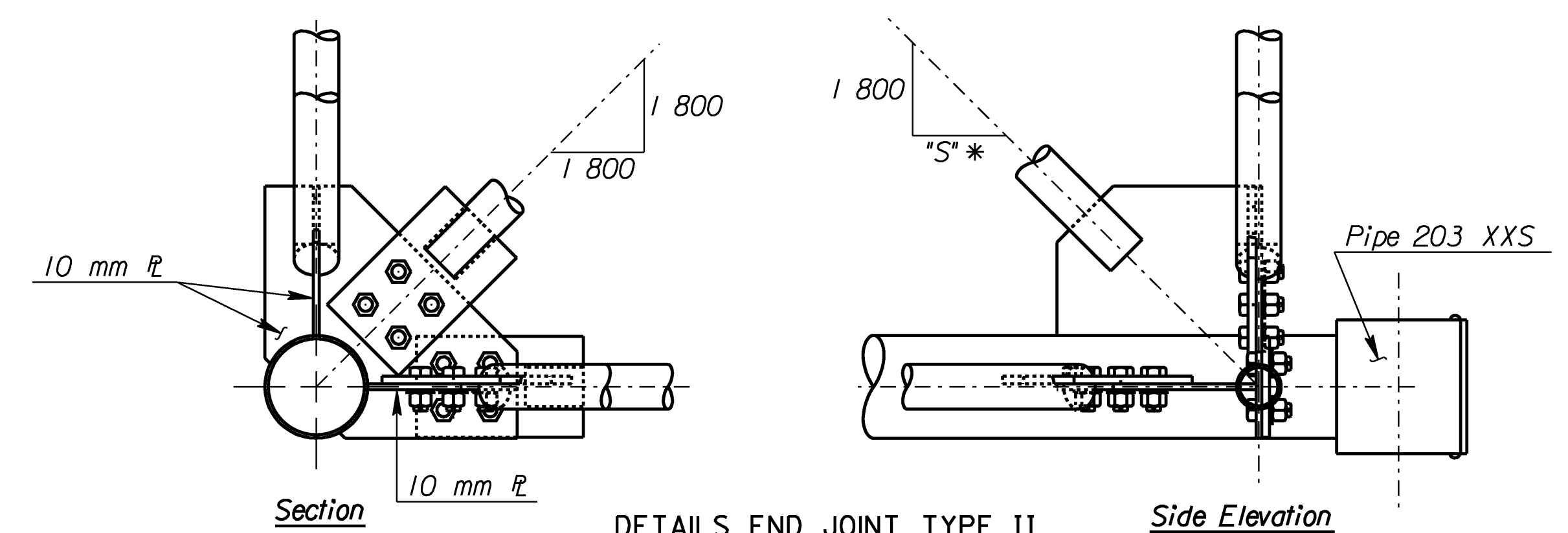
TYPE I JOINT DETAILS



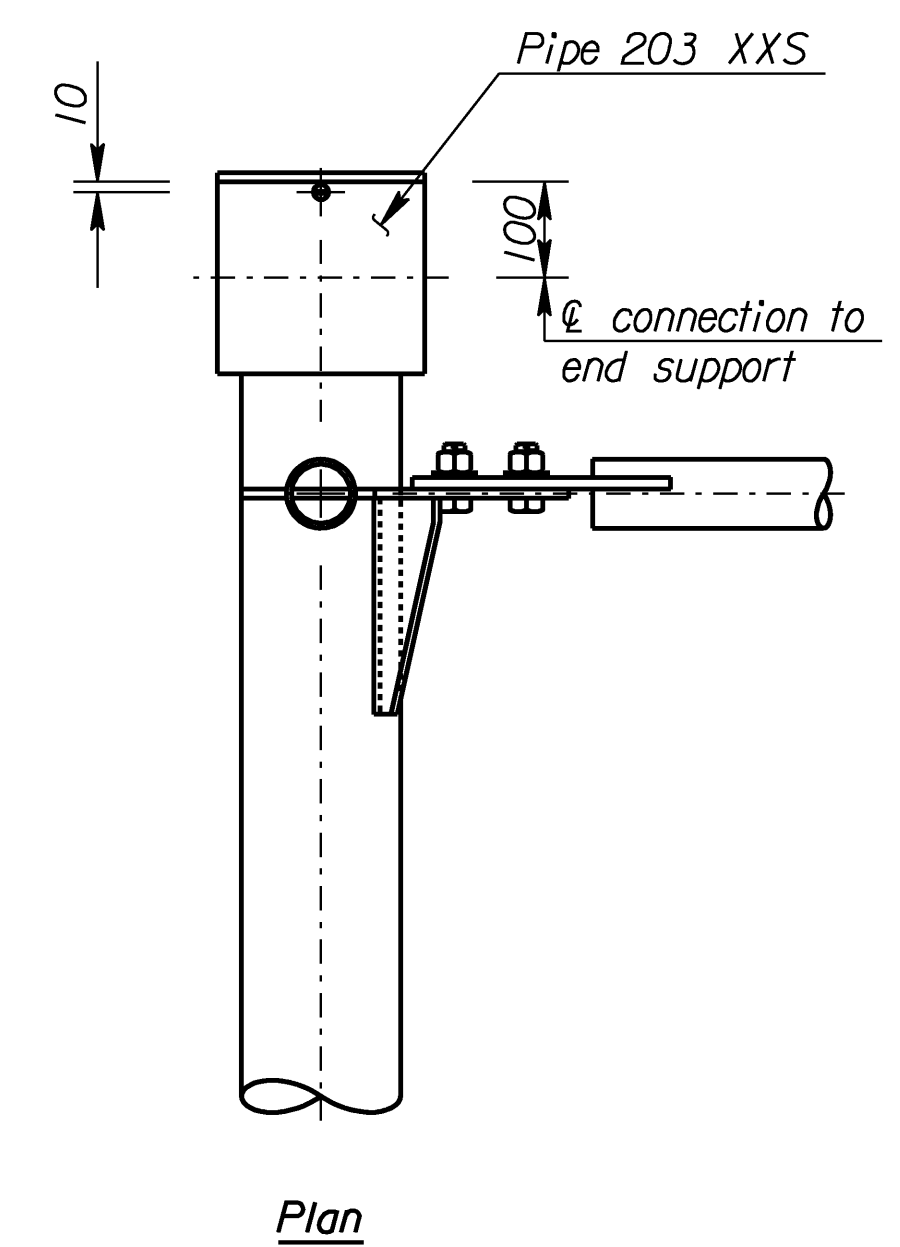
SPLICE PLATE DETAILS



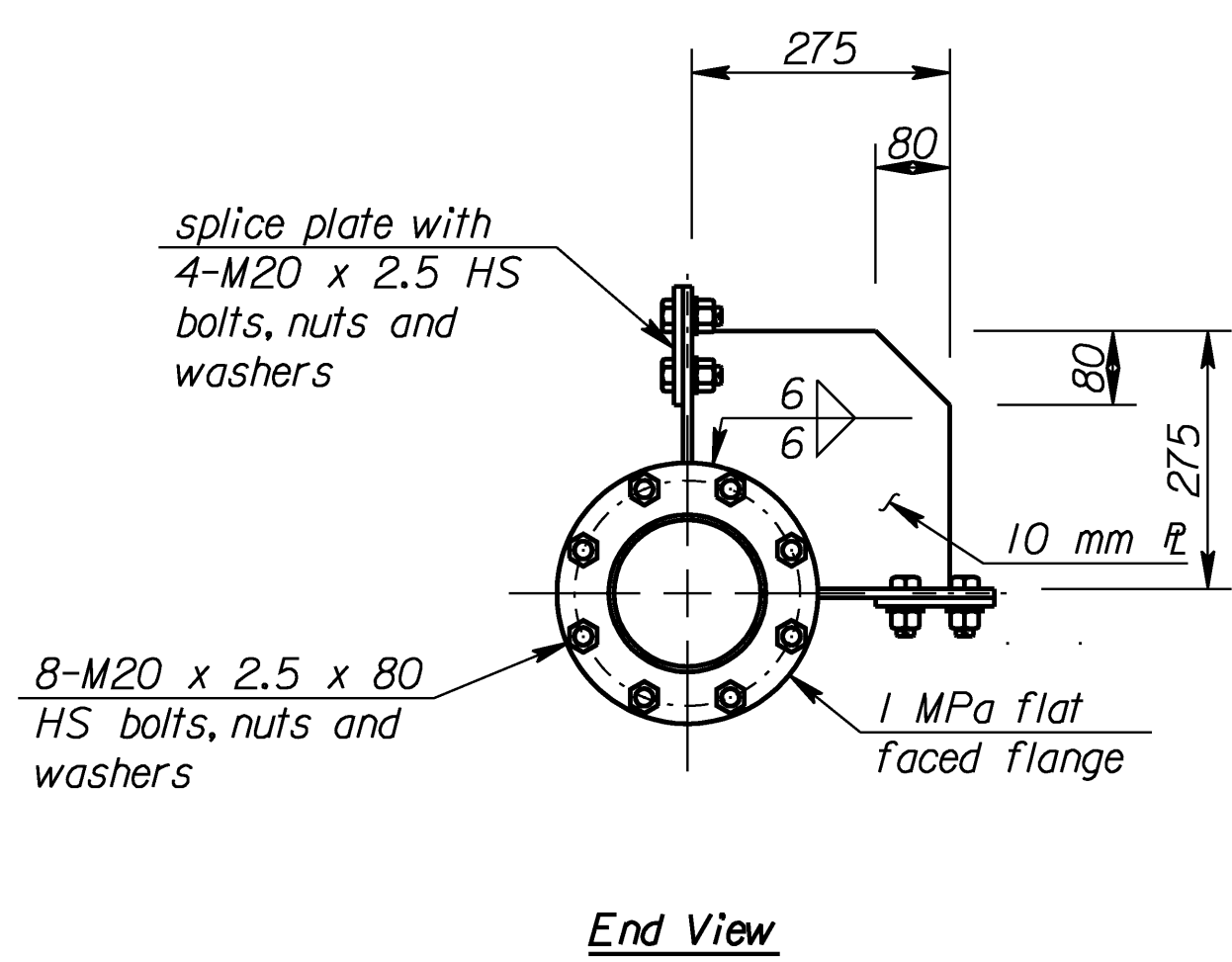
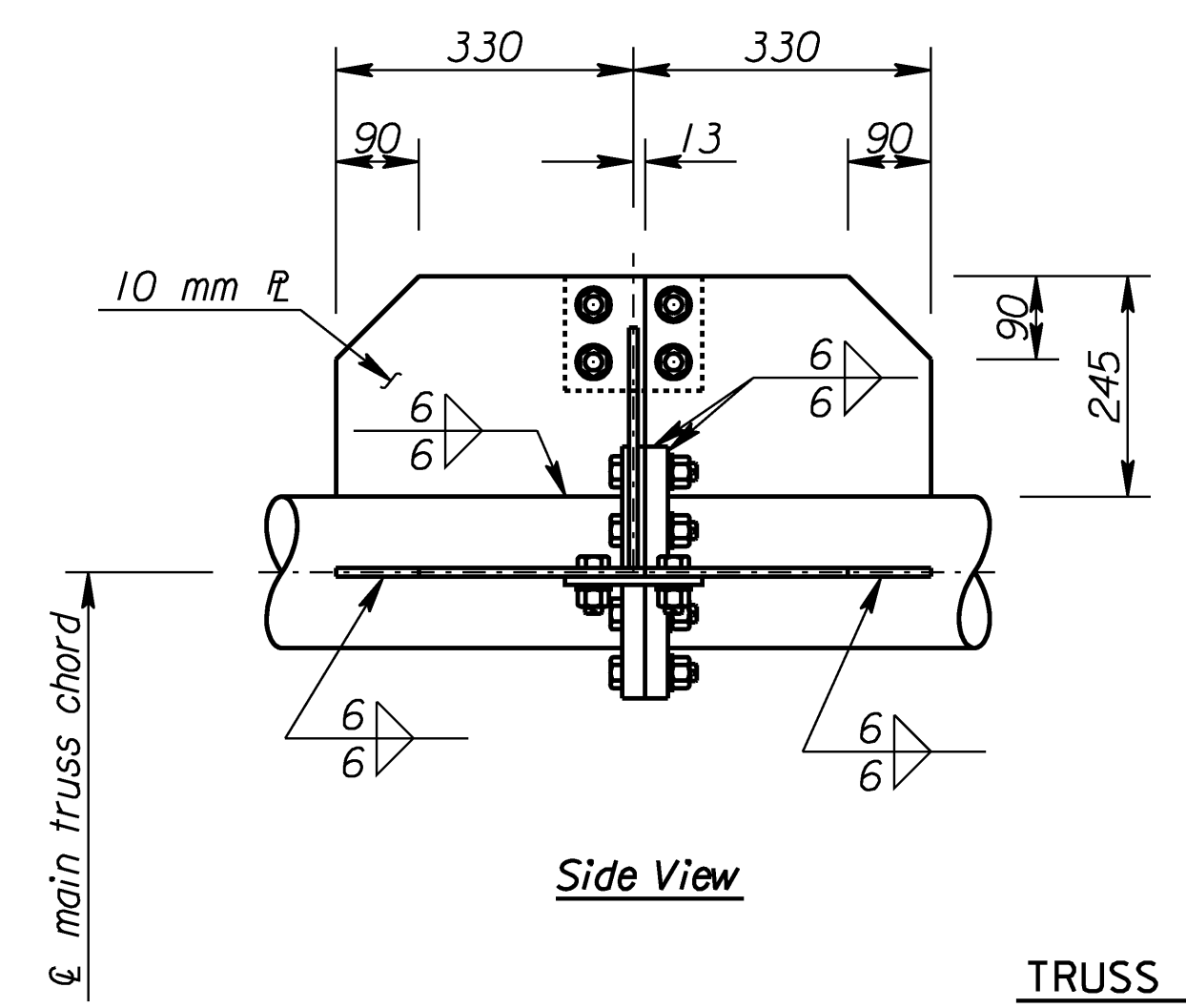
NOTE: Clip 3 mm from the washers for the M24 x 3 bolts in the Type II joints to clear weld.



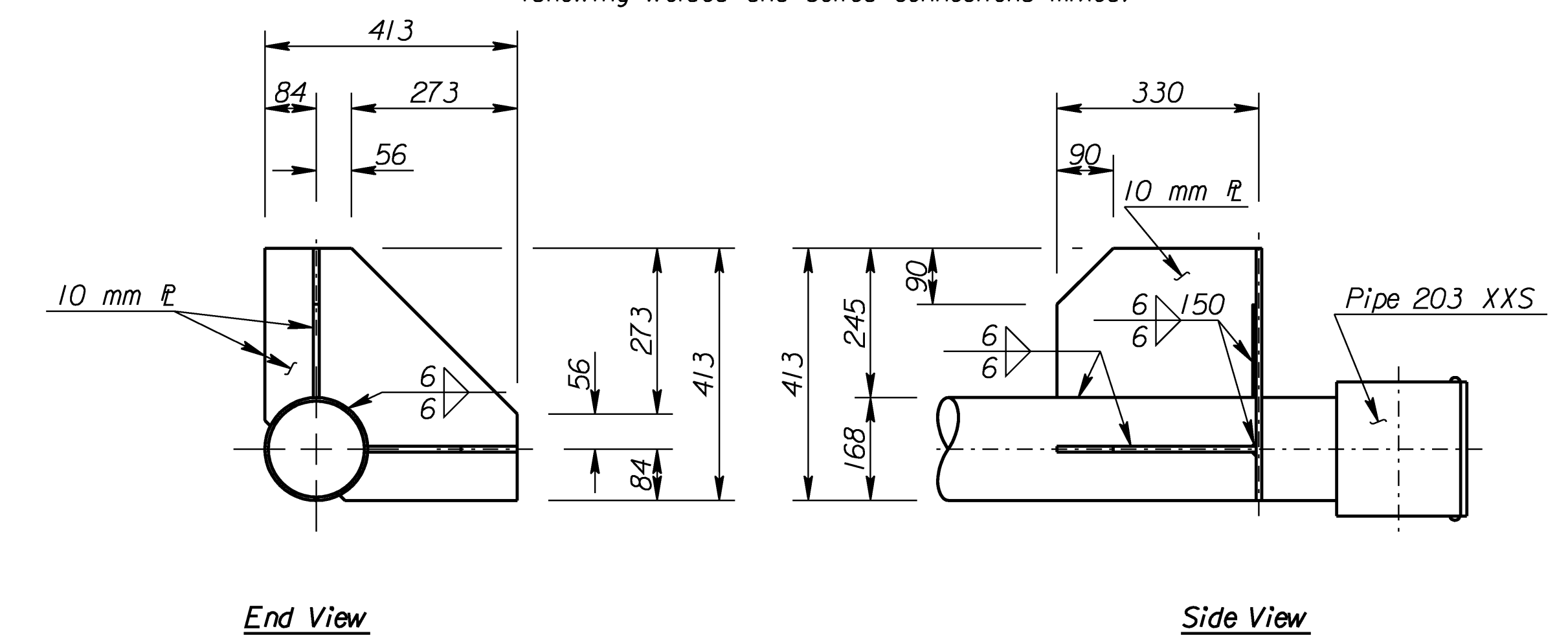
DETAILS END JOINT TYPE II
(showing welded and bolted connections mixed)



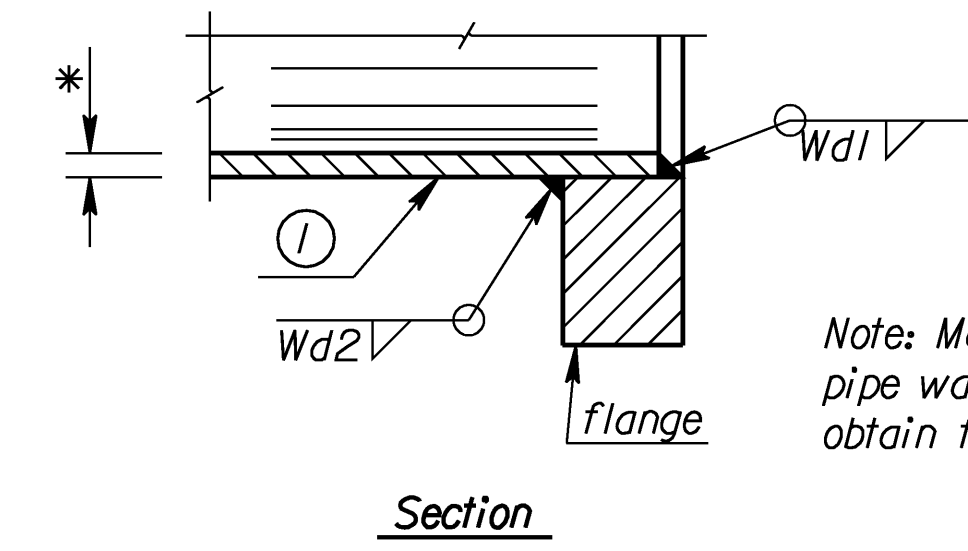
DETAILS END JOINT TYPE I
(showing welded and bolted connections mixed)



TRUSS SPLICE DETAILS



TYPE II JOINT DETAILS



Note: Make Wd1 depth equal to pipe wall thickness, build out to obtain full throat.

Member ① * wall thickness	Fillet Weld size Wd2
4.78	5
5.56	6
7.11	8
8.74	8
11.0	10

* See "Construction Layout" for wall thickness and "S"

Std. Base File: sl15icsi.dgn - Plot 4
 Plotted By: bond
 File: F:\Working\82580\NSL_Structures\SL-825801-15\icsi.dgn
 Plot Date: 6/29/2005

NO.	DATE	REVISIONS	BY	APP'D
KANSAS DEPARTMENT OF TRANSPORTATION STANDARD STRUCTURAL SIGN SUPPORTS SPAN TYPE OVERHEAD STEEL ALTERNATE TRUSS END JOINT AND SPLICE DETAILS SL15IC-04 SI				
DESIGNED	BFM	DETAILED	KFH	QUANTITIES
DESIGN CK.	RDH	DETAIL CK.	RDH	QUAN. CK.
				Kenneth F. Hurst
				CADD
				DJE
				CADD CK.
				LES