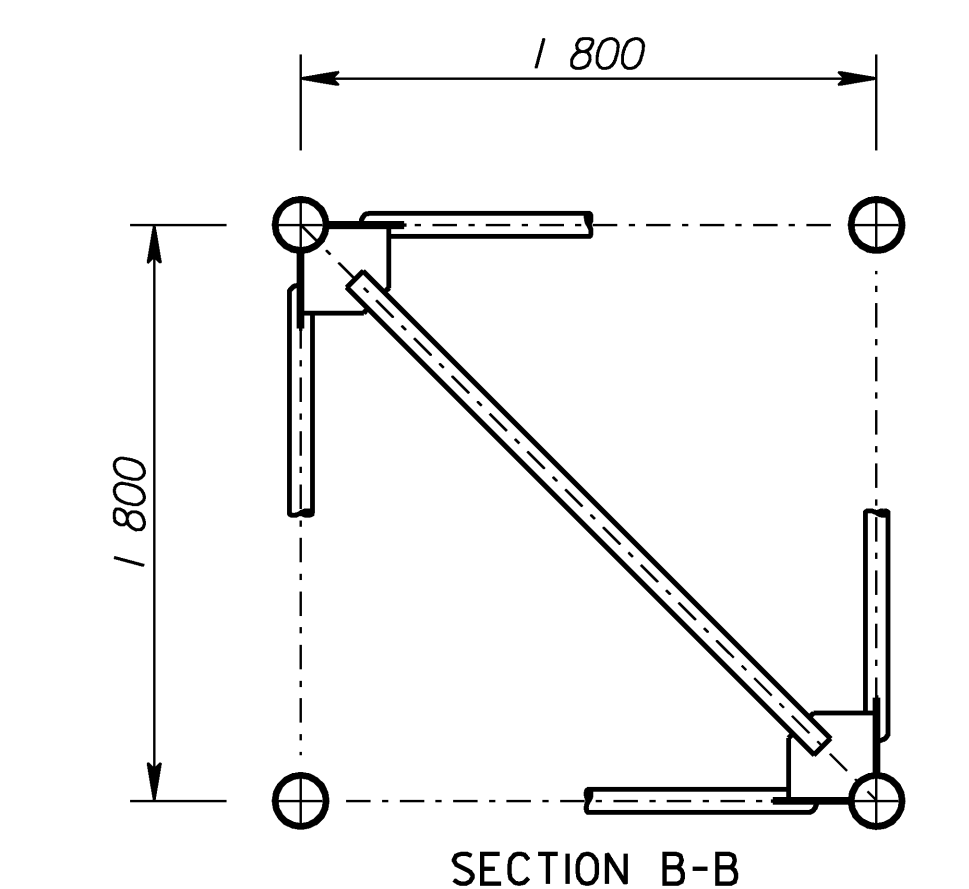
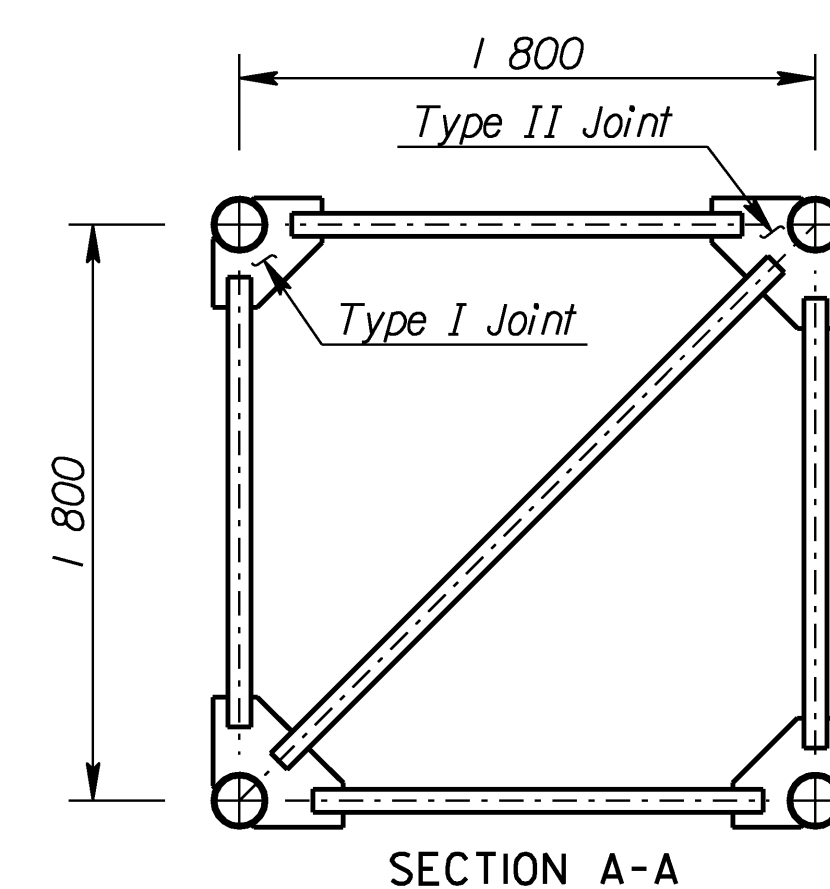
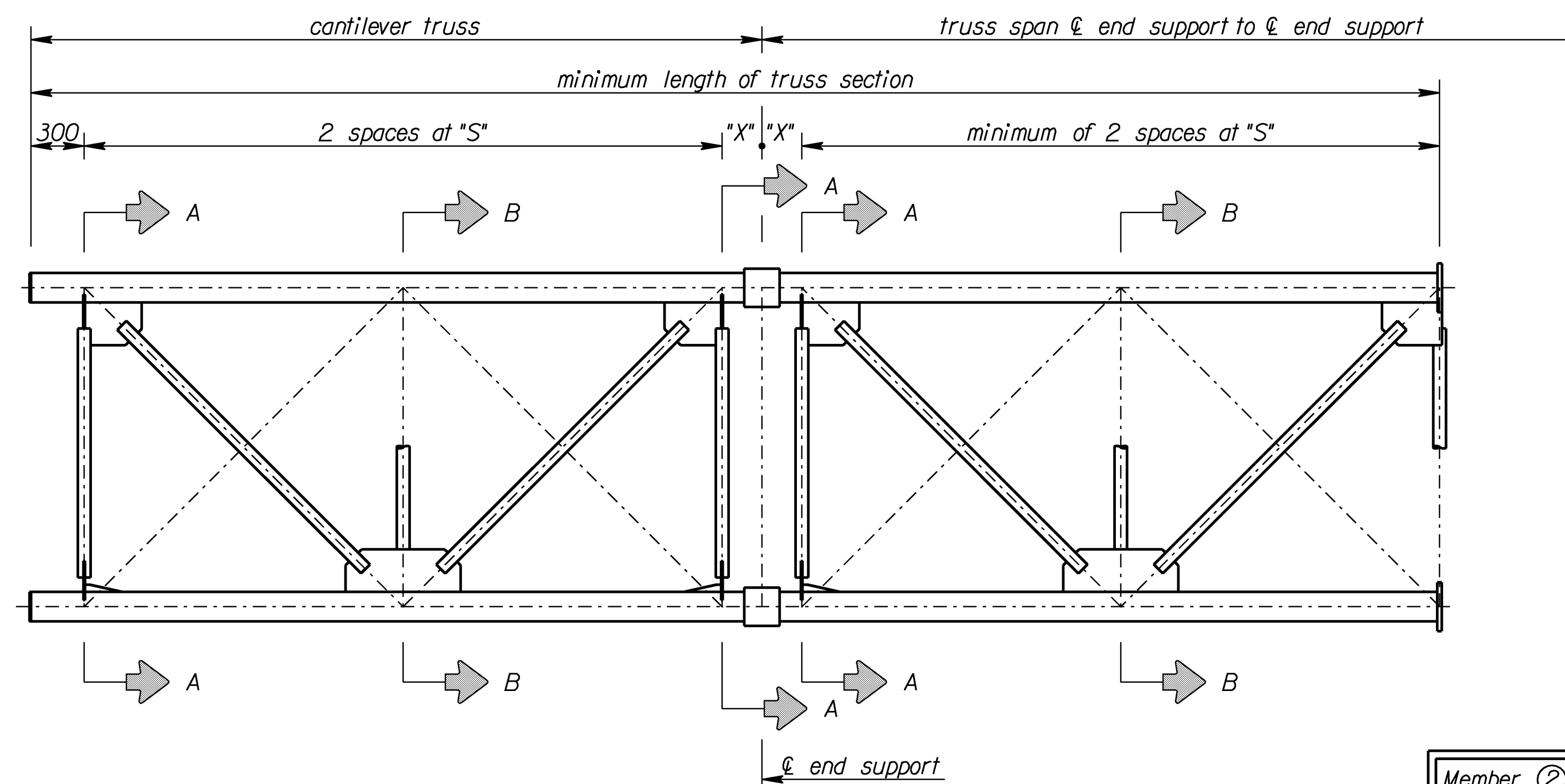
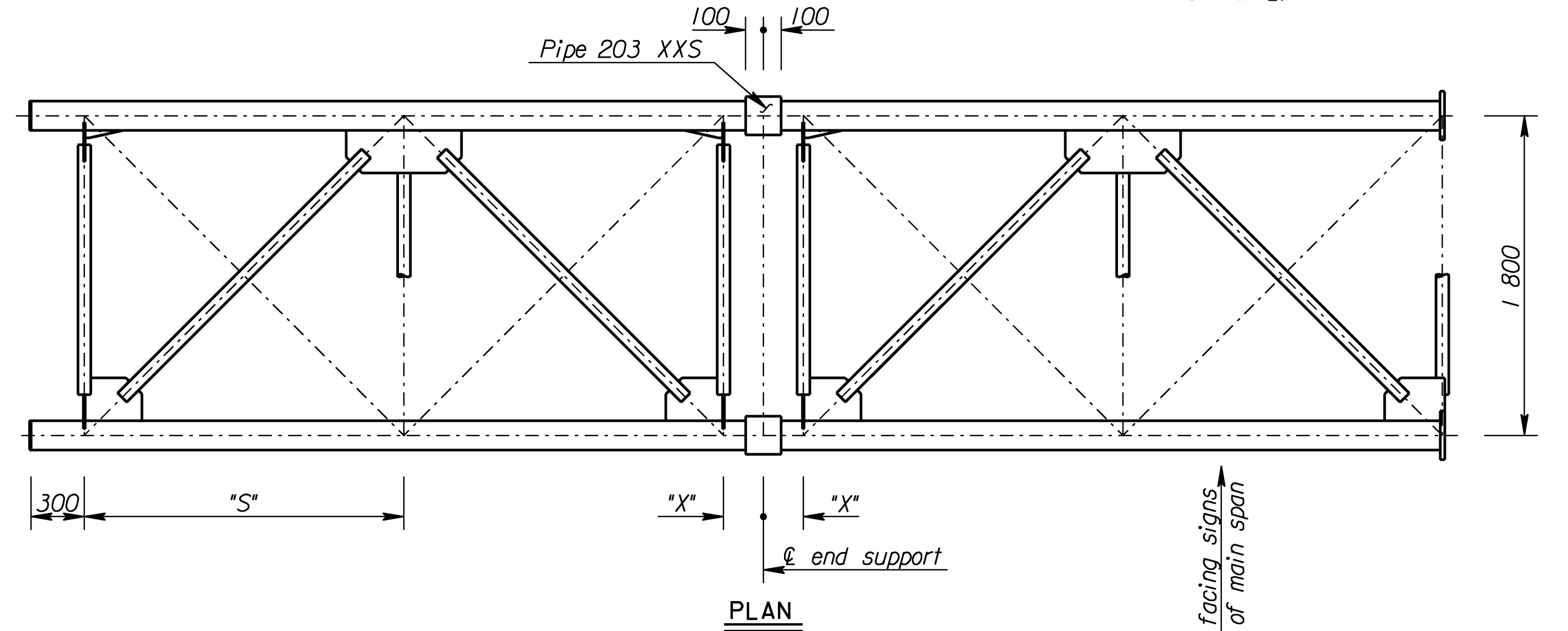
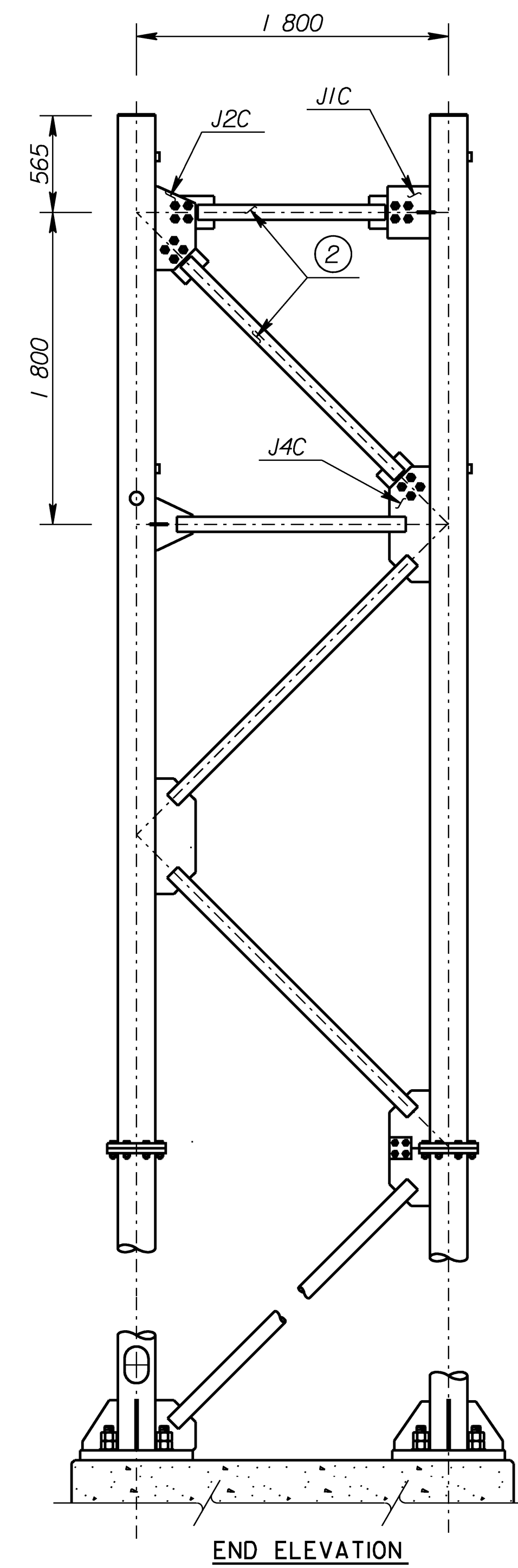
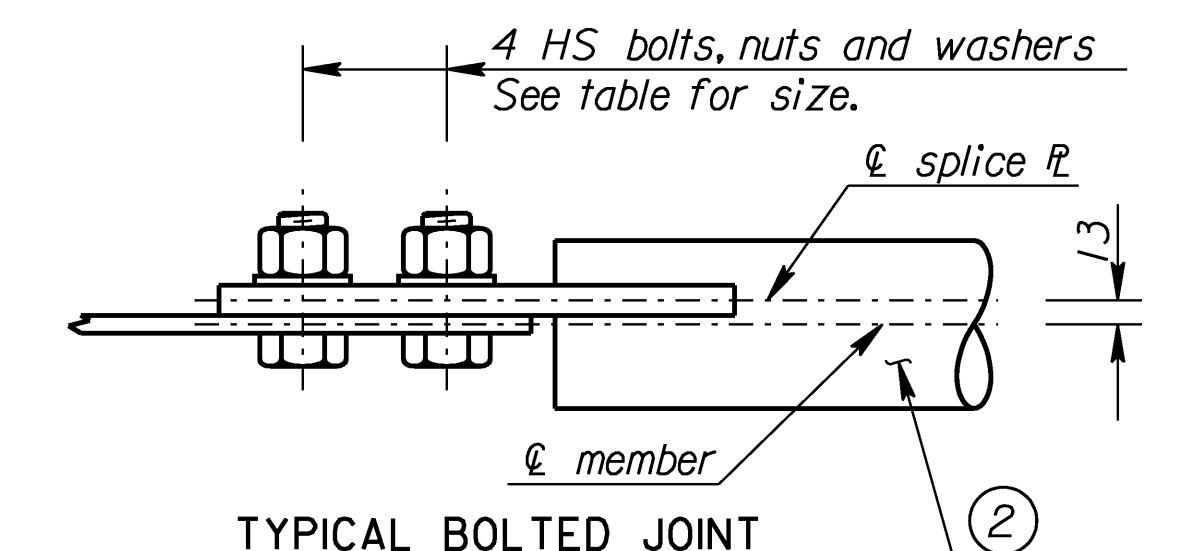
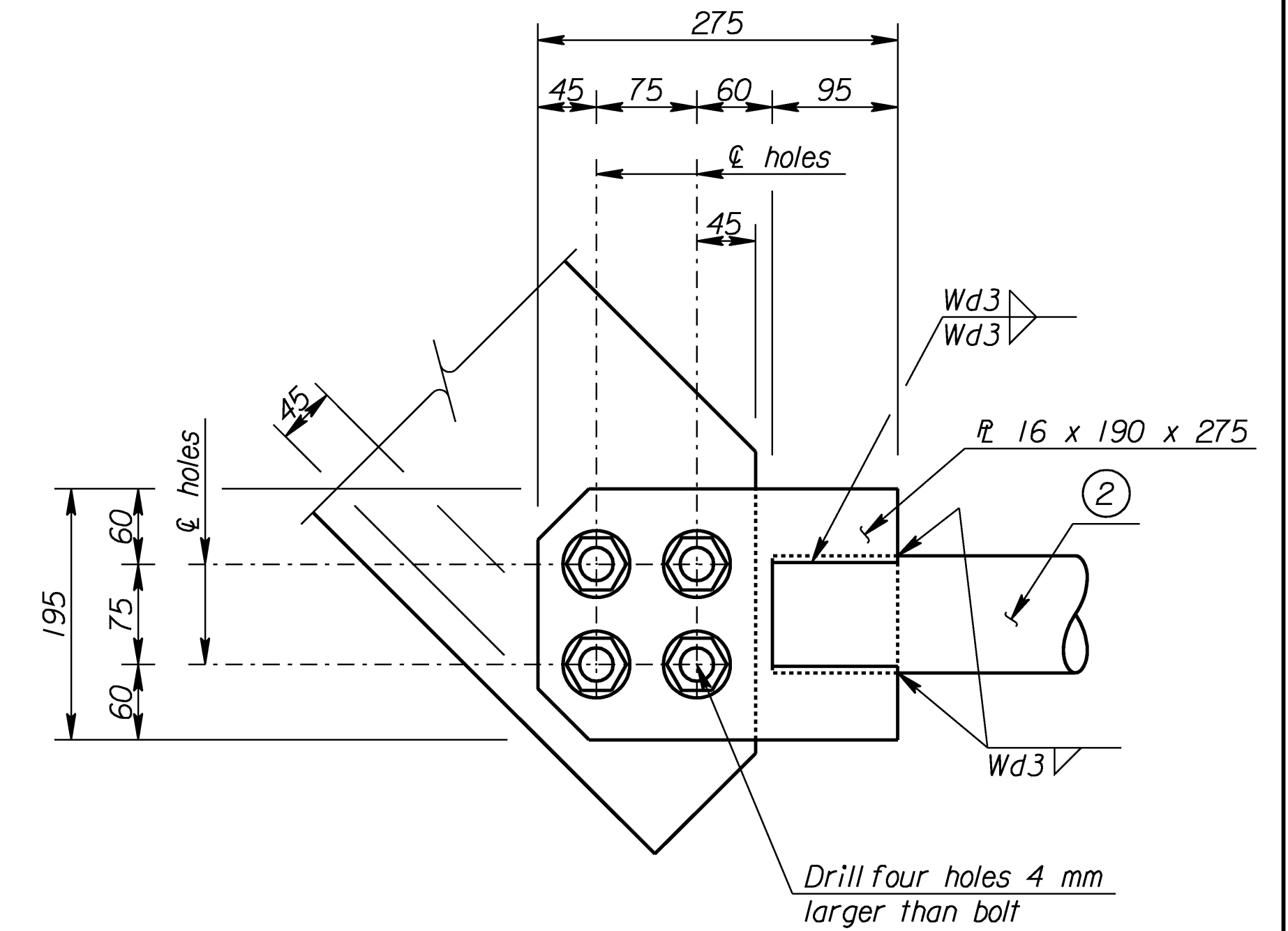
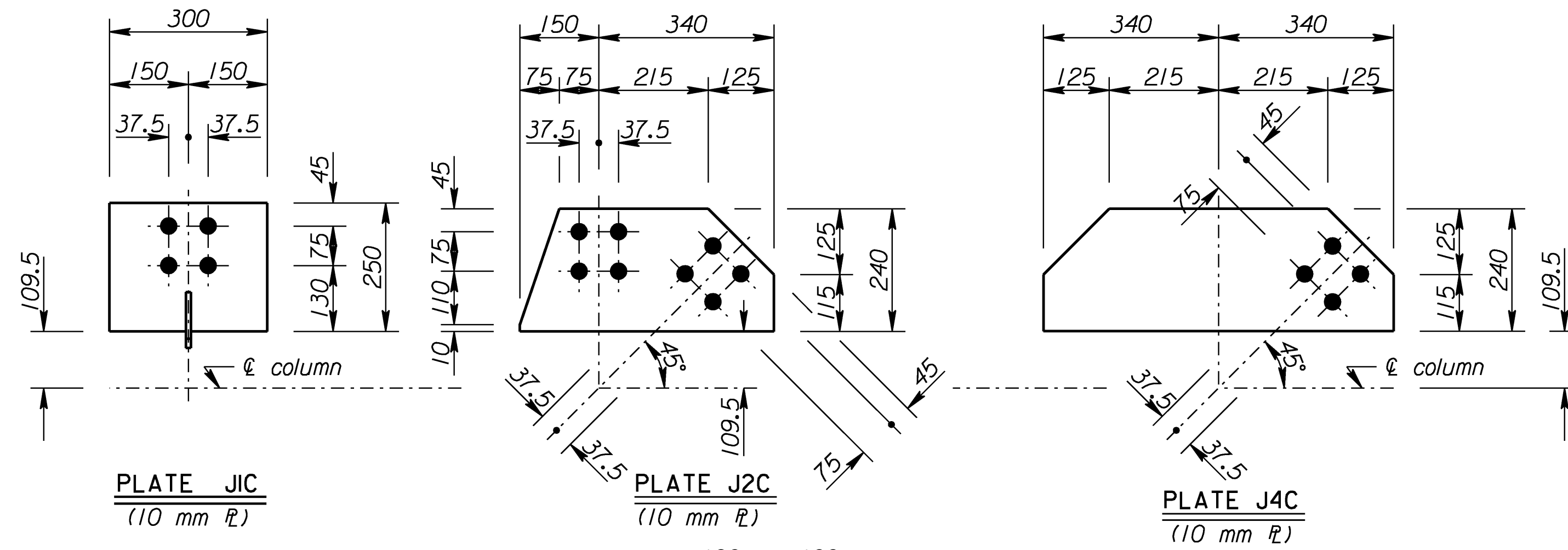


Note: This sheet shows only those details of the cantilever-truss that differ from the standard truss details. Refer to the standard truss details for any details not shown on this sheet.

Note: This sheet shows the bolted option for the cantilever end support. The Contractor may choose to fabricate the end support exactly as shown for the standard truss, except that the top two secondary members would be welded into place in the field after the truss is erected. Give the areas around these field welds two coats of "Zinc Rich Coating".



| Member ② * wall thickness | Fillet Weld size Wd3 | Bolt Size |
|------------------------------|-------------------------|----------------|
| 3.18 | 5 | M20 x 2.5 x 60 |
| 5.49 | 6 | M24 x 3 x 65 |
| 7.62 | 8 | M27 x 3 x 70 |

* See "Construction Layout" for wall thickness, "S" and "X".

Std. Base File: sl151csi.dgn - Plot 8
 Plotted By: bond
 File: F:\Working\825801\SL Structures\SL-825801-151csi.dgn
 Plot Date: 6/29/2005

| NO. | DATE | REVISIONS | BY | APP'D |
|---|------|---------------|-----|--------------------------|
| KANSAS DEPARTMENT OF TRANSPORTATION STANDARD STRUCTURAL SIGN SUPPORTS CANTILEVER-SPAN TYPE OVERHEAD STEEL ALTERNATE TRUSS END SUPPORT AND SPECIAL DETAILS SL151C-08 SI | | | | |
| | | | | SEDGWICK CO. |
| FHWA APPROVAL | | 4-10-97 APP'D | | Kenneth F. Hurst |
| DESIGNED | LES | DETAILED | LES | QUANTITIES |
| DESIGN CK. | LRR | DETAIL CK. | LRR | QUAN. CK. |
| | | | | CADD DJE CADD CK. LES |