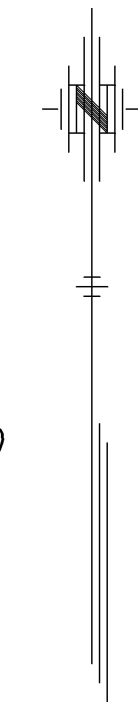


STATE	PROJECT NO.	YEAR	SHEET NO.	TOTAL SHEETS
KANSAS	54-87 K-8258-08	2005	200	223

GENERAL SEQUENCE OF CONSTRUCTION:

STAGE 2

- A. Shift westbound Kellogg from the North Frontage Road to the completed south section of the proposed improvements.
- B. Complete the north section of the proposed improvements including Ramps J and L.
- C. Remove the existing transitions of westbound Kellogg to and from the North Frontage Road.
- D. Construct access road from the north frontage road to westbound Kellogg near ϕ Kellogg Sta. 4+000.

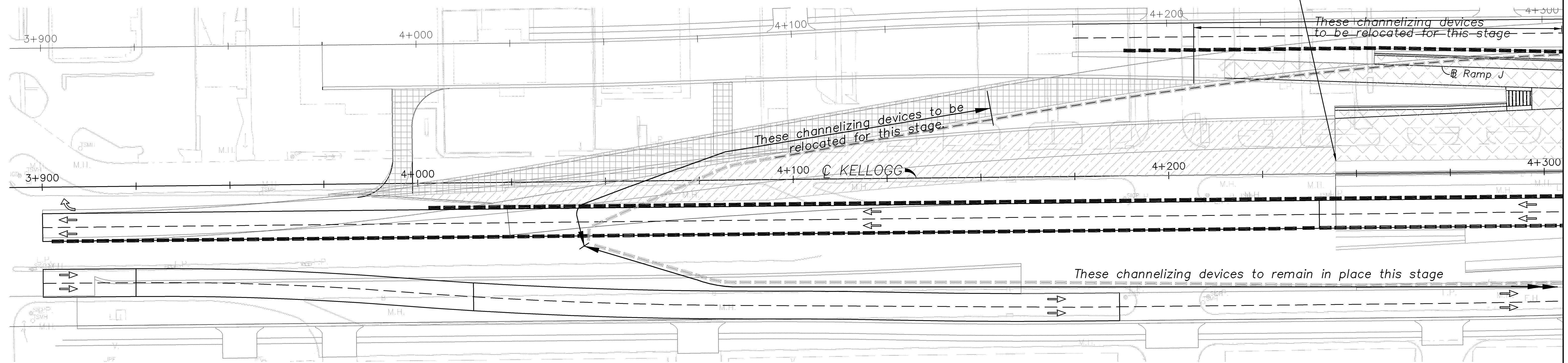


Scale: 1:500

DATE	BY






REFERENCE NOTED	REFERENCE CHECKED

STA. 4+244.422 BEGIN W.B. CONST.
PROJ. 54-87 K-8258-08



STAGE 2

LEGEND

-  PERMANENT CONCRETE CONSTRUCTION THIS STAGE
-  TEMPORARY ASPHALT CONST. THIS PHASE
-  CHANNELIZING DEVICES THIS STAGE
-  CHANNELIZING DEVICES PREVIOUS STAGE
-  TEMPORARY ASPHALT TO BE REMOVED

KANSAS DEPARTMENT OF TRANSPORTATION
TRAFFIC CONTROL
KELLOGG (US-54) AVENUE
STAGE 2