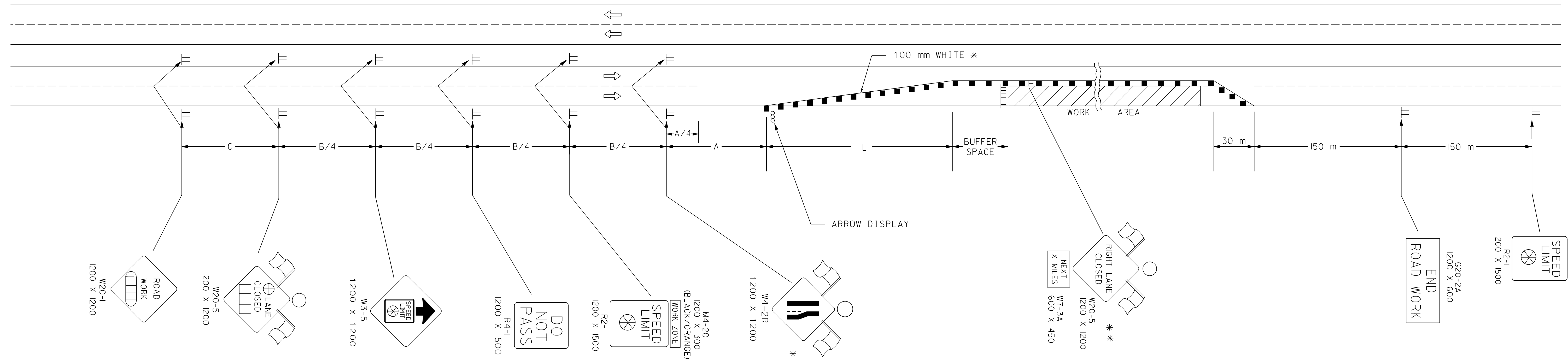


STATE	PROJECT NO.	YEAR	SHEET NO.	TOTAL SHEETS
KANSAS	54-87 K-8258-08	2005	210	223

REFER TO STD. TE7051 FOR ADDITIONAL INFORMATION ON TRAFFIC CONTROL SIGNS AND SIGN SPACING.
 REFER TO STD. TE7025 FOR INFORMATION ON TAPERS AND CHANNELIZING DEVICES.
 REFER TO STD. TE7005 FOR LENGTH OF BUFFER SPACE.



LEFT-SIDE SIGNS SHALL BE OMITTED FOR A FOUR-LANE UNDIVIDED HIGHWAY.

* FOR LEFT LANE CLOSURES USE W4-2L AND YELLOW EDGE LINE ALONG CHANNELIZING DEVICES.

** THE W20-5 (RIGHT LANE CLOSED) AND W7-3A (NEXT X MILES) SIGNS SHOULD BE PLACED AT 3.2 KILOMETER INCREMENTS ON A PROJECT OF 6.4 KILOMETERS OR LONGER.

- Channelizing Devices
- ||| Type III Barricades
- ⊞ AHEAD, 1500 FT Or 1 MILE
- ⊞ Speed To Be Determined By The Engineer
- ⊞ AHEAD, 1000 FT, 1500 FT Or 1/2 MILE
- ⊞ RIGHT OR LEFT
- X Length To The Nearest Whole Mile
- TYPE "A" LIGHT

Plotted By : @USER@NAME@
 Plot File : @@DGN@FEC@
 Plot Date : @@@@SY@TIME@@@

NO.	DATE	REVISIONS	BY	APP'D
3				
2	2-1-05	CLARIFIED NOTES, UPDATED WARNING SIGNS	B.H.	A.A.A.
1	9-26-02	REMOVED G20-1 SIGNS, ADDED W20-5 AND W7-3A	M.H.	S.A.B.

KANSAS DEPARTMENT OF TRANSPORTATION
TYPICAL TRAFFIC CONTROL
FOUR-LANE HIGHWAY
ONE LANE CLOSED

TE744SI 9/1/00

FHWA APPROVAL	2-1-2005	APP'D	Anthony A. Alrobairre
DESIGNED	B.A.H.	DETAILED	B.A.H.
QUANTITIES	TRACED	QUAN. CK.	TRACE CK.