

S 1/4 Cor. Sec 36-T27S-R2W
Found 1/2" bar @ Corner

1. S.S.W. to Spike in N face Power Pole, 21.77'
2. N.W. to "+" Cut on W. end RCP, 32.42'
3. N.E. to "+" Cut on E. end RCP, 28.45'
4. N. to Centerline TW Gravel Road, 4'

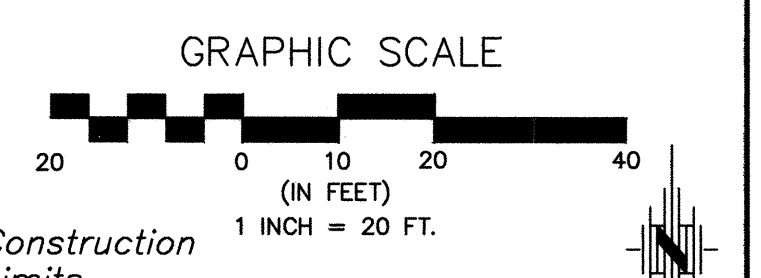
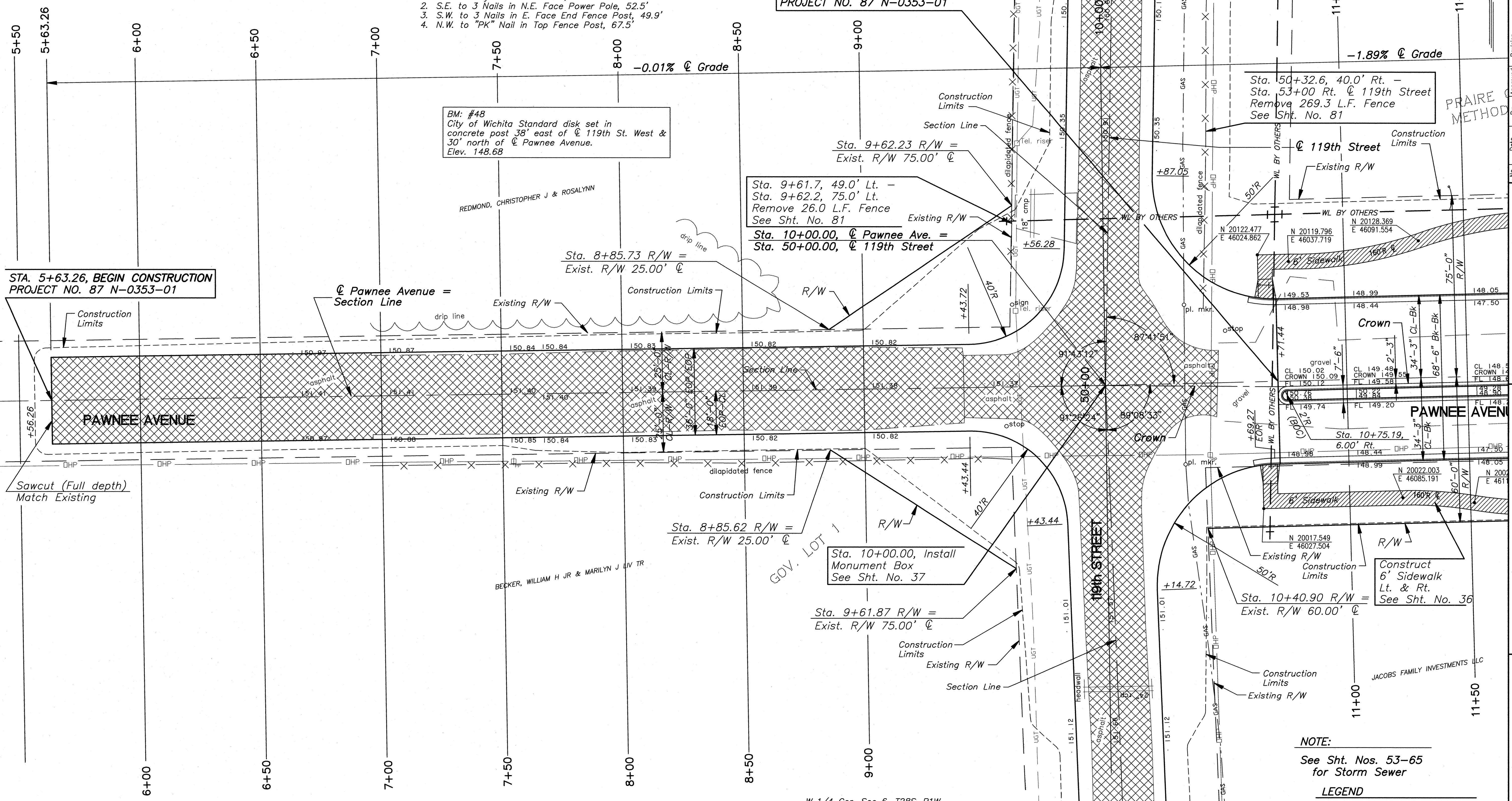
W 1/4 Cor. Sec 31-T27S-R1W
Found 1/2" IP in thimble @ corner

1. W. to 3 nails in S. face fence post, 39.8'
2. N.E. to 3 nails in N.W. face Power Pole, 78.2'
3. E. to 3 nails in S. face Power Pole, 42.0'
4. W. to Center top concrete witness post, 40.00'
5. @ Centerline asphalt pavement.

SW Cor. Sec 31-T27S-R1W
PI Sta. 10+00.00, ? Pawnee Avenue

1. N.E. to City Benchmark Disk, 49.1'
2. S.E. to 3 Nails in N.E. Face Power Pole, 52.5'
3. S.W. to 3 Nails in E. Face End Fence Post, 49.9'
4. N.W. to "PK" Nail in Top Fence Post, 67.5'

STA. 10+71.44, BEGIN PROJECT
PROJECT NO. 87 N-0353-01



BM: #48
City of Wichita Standard disk set in concrete post 38' east of @ 119th St. West & 30' north of @ Pawnee Avenue.
Elev. 148.68

STA. 5+63.26, BEGIN CONSTRUCTION
PROJECT NO. 87 N-0353-01

Sta. 9+61.7, 49.0' Lt. -
Sta. 9+62.2, 75.0' Lt.
Remove 26.0 L.F. Fence
See Sht. No. 81

Sta. 10+00.00, @ Pawnee Ave. =
Sta. 50+00.00, @ 119th Street

Sta. 50+32.6, 40.0' Rt. -
Sta. 53+00 Rt. @ 119th Street
Remove 269.3 L.F. Fence
See Sht. No. 81

Sta. 8+85.62 R/W =
Exist. R/W 25.00' @

Sta. 10+00.00, Install
Monument Box
See Sht. No. 37

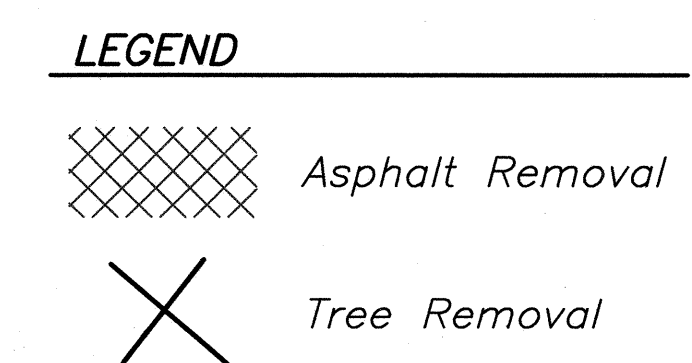
Sta. 9+61.87 R/W =
Exist. R/W 75.00' @

Sta. 10+40.90 R/W =
Exist. R/W 60.00' @

W 1/4 Cor. Sec 6-T28S-R1W
Found 1/2" IP 7" deep @ corner

1. E. to 3 nails in Power Pole, 38.55'
2. E. to PK nail in Power Pole, 52.8'
3. W.N.W. to "+" cut on top S. end RCP, 34.55'
4. Centerline asphalt pavement, 1'

NOTE:
See Sht. Nos. 53-65
for Storm Sewer



PAWNEE AVENUE
 119TH TO MAIZE ROAD
 CITY OF WICHITA, KANSAS
 PAVEMENT PLAN

POE & ASSOCIATES, INC.
 CONSULTING ENGINEERS
 5940 E. Central, Suite 200 • Wichita, KS 67208-4242
 Phone 316/685-4114 • FAX 316/685-4444

FINAL
 Engineer: P. FERGUSON
 Designer: J. UNRUH
 Proj. Job No.: 1793
 Date: JULY 2005
 Sheet
 4 of 162