

Sta. 42+54.6, 61.4' Lt. -
Sta. 42+76.9, 42.7' Lt.
Remove 4.4 L.F. Curb & Gutter
Remove 10.5 S.Y. Concrete Flume
See Sht. No. 81

Sta. 42+10.5, 44.6' Lt. -
Sta. 42+28.3, 61.6' Lt.
Remove 10.3 L.F. Curb & Gutter
Remove 8.1 S.Y. Concrete Flume
See Sht. No. 81

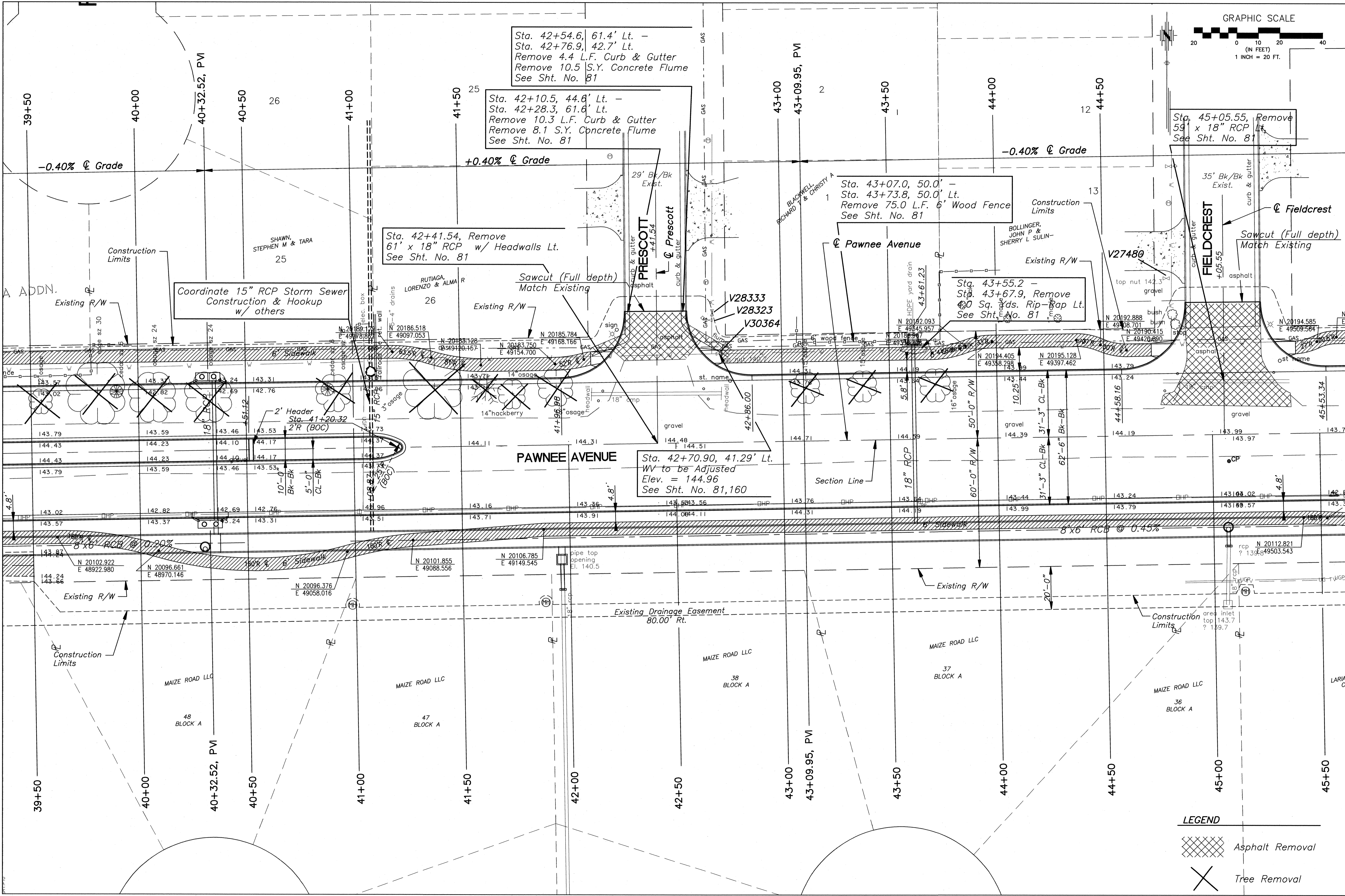
Sta. 42+41.54, Remove
6' x 18" RCP w/ Headwalls Lt.
See Sht. No. 81

Sta. 43+07.0, 50.0' -
Sta. 43+73.8, 50.0' Lt.
Remove 75.0 L.F. 6' Wood Fence
See Sht. No. 81

Sta. 45+05.55, Remove
59' x 18" RCP Lt.
See Sht. No. 81

Sta. 43+55.2 -
Sta. 43+67.9, Remove
40 Sq. Yds. Riprap Lt.
See Sht. No. 81

Sta. 42+70.90, 41.29' Lt.
WV to be Adjusted
Elev. = 144.96
See Sht. No. 81, 160



LEGEND

	Asphalt Removal
	Tree Removal

**PAWNEE AVENUE
19TH TO MAIZE ROAD
CITY OF WICHITA, KANSAS
PAVEMENT PLAN**

POE & ASSOCIATES, INC.
CONSULTING ENGINEERS
5940 E. Central, Suite 200 ■ Wichita, KS 67208-4422
Phone 316/685-4114 ■ FAX 316/685-4444

FINAL

Engineer: P. FERGUSON
Designer: J. UNRUH
Poe. Job No.: 1793
Date: JULY 2005

Sheet
10 of 162