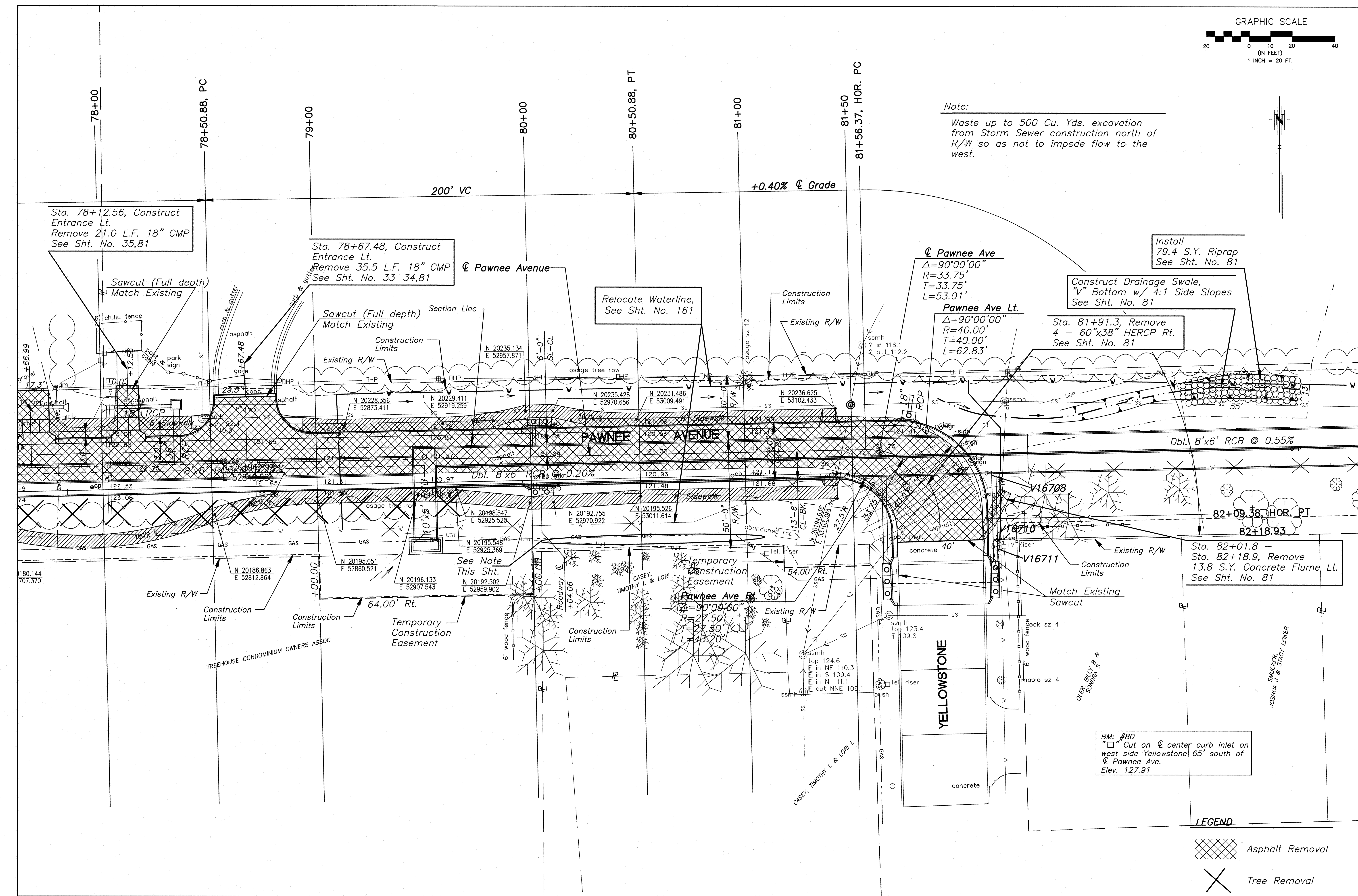


Note:  
Waste up to 500 Cu. Yds. excavation from Storm Sewer construction north of R/W so as not to impede flow to the west.



Sta. 78+12.56, Construct Entrance Lt. Remove 21.0 L.F. 18" CMP See Sht. No. 35,81

Sta. 78+67.48, Construct Entrance Lt. Remove 35.5 L.F. 18" CMP See Sht. No. 33-34,81

Relocate Waterline, See Sht. No. 161

Centerline Pawnee Ave  
 $\Delta=90^{\circ}00'00''$   
 $R=33.75'$   
 $T=33.75'$   
 $L=53.01'$

Pawnee Ave Lt.  
 $\Delta=90^{\circ}00'00''$   
 $R=40.00'$   
 $T=40.00'$   
 $L=62.83'$

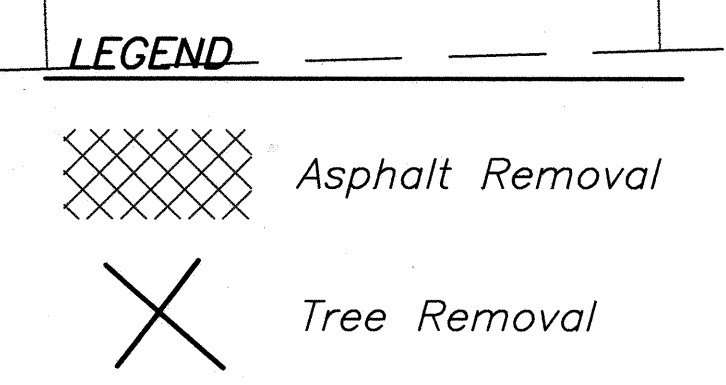
Install 79.4 S.Y. Riprap See Sht. No. 81

Construct Drainage Swale, "V" Bottom w/ 4:1 Side Slopes See Sht. No. 81

Sta. 81+91.3, Remove 4 - 60"x38" HERCP Rt. See Sht. No. 81

Sta. 82+01.8 - Sta. 82+18.9, Remove 13.8 S.Y. Concrete Flume Lt. See Sht. No. 81

BM: #80  
"□" Cut on center curb inlet on west side Yellowstone 65' south of centerline Pawnee Ave. Elev. 127.91



NO.	DATE	BY	APPROVED	REVISION

PAWNEE AVENUE  
119TH TO MAIZE ROAD  
CITY OF WICHITA, KANSAS  
PAVEMENT PLAN

POE & ASSOCIATES, INC.  
CONSULTING ENGINEERS  
5940 E. Central, Suite 200 • Wichita, KS 67208-4242  
Phone 316/685-4114 • FAX 316/685-4444

**PE**

FINAL

Engineer: P. FERGUSSON  
Designer: J. UNRUH  
Poe Job No.: 1793  
Date: JULY 2005

Sheet 17 of 162