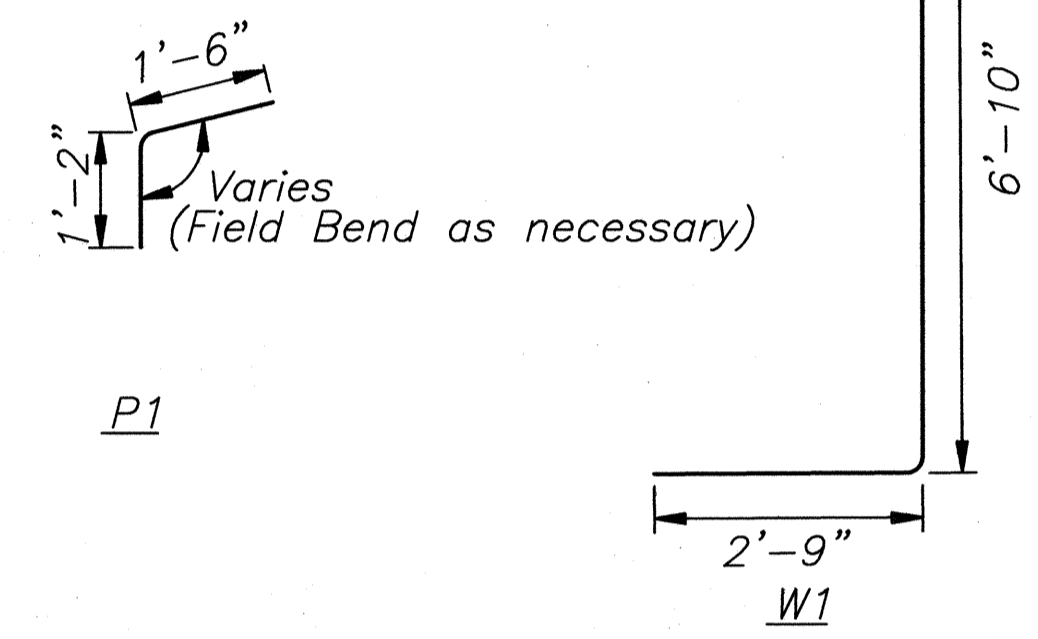
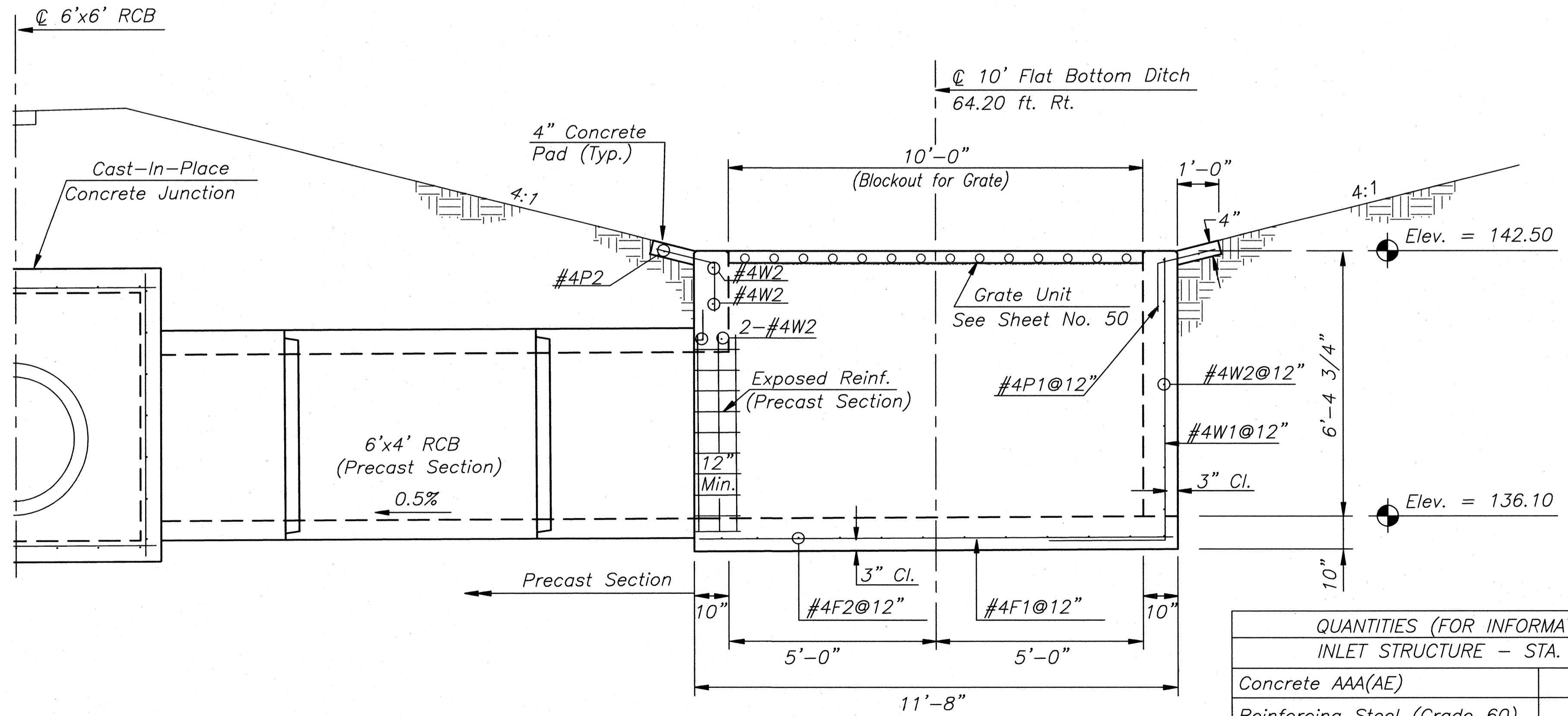


PLAN - INLET STRUCTURE
STA. 21+52.50 1/2"=1'

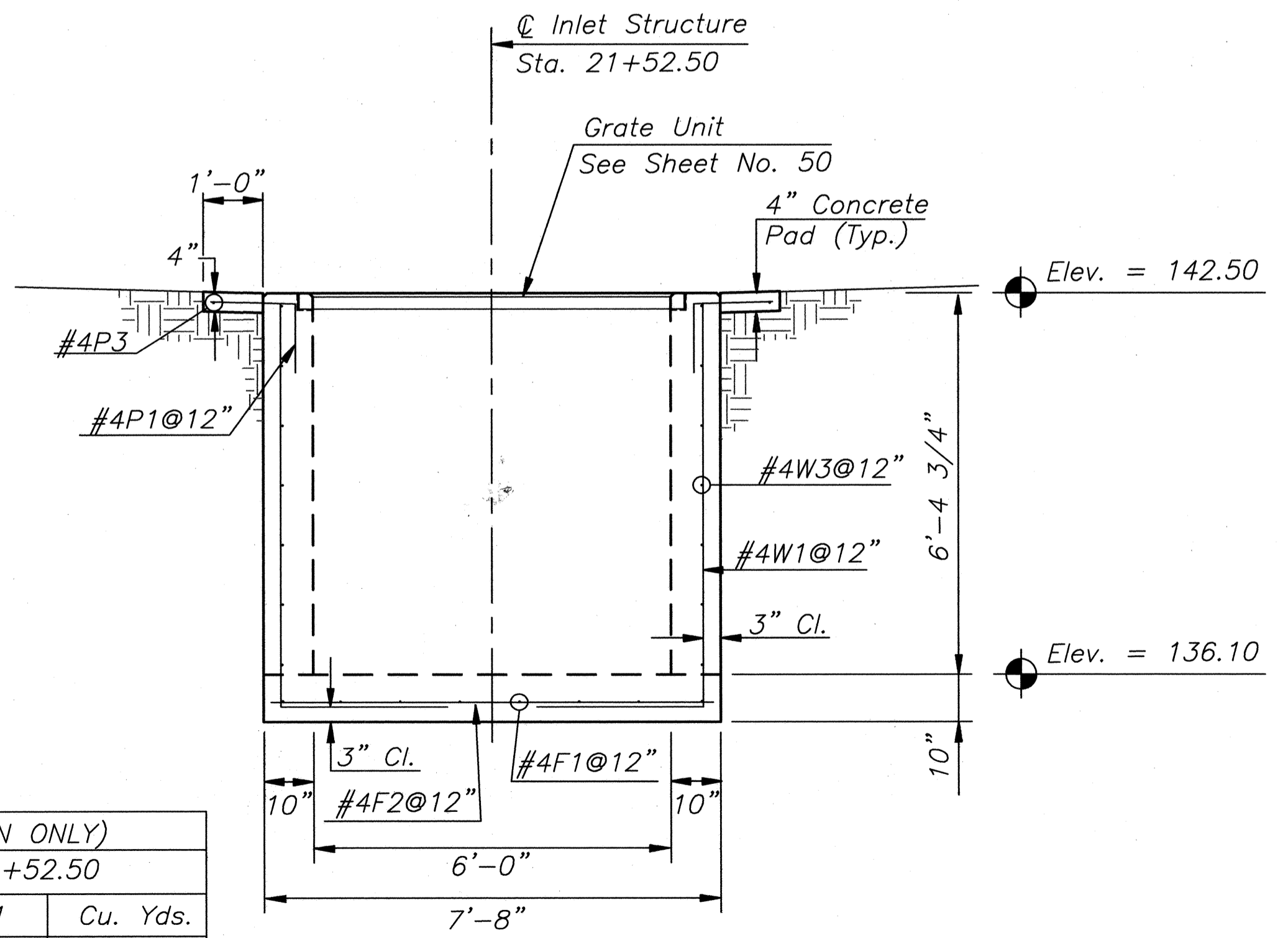
BILL OF REINFORCING STEEL Non-Epoxy Coated - Grade 60							
Straight Bars				Bent Bars			
Mark	Size	Number	Length	Mark	Size	Number	Length
F1	#4	8	11'-5"	P1	#4	40	2'-7"
F2	#4	12	7'-5"	W1	#4	32	9'-8"
W2	#4	11	7'-5"				
W3	#4	14	11'-5"				
P2	#4	2	9'-4"				
P3	#4	2	13'-4"				



Bending Diagrams
(All dimensions are out to out of bars.)



SECTION A-A
1/2"=1'



SECTION B-B
1/2"=1'

QUANTITIES (FOR INFORMATION ONLY)		
INLET STRUCTURE - STA. 21+52.50		
Concrete AAA(AE)	9.1	Cu. Yds.
Reinforcing Steel (Grade 60)	590	Lbs.
Grate Unit	1	Each

Note:
All labor, materials and equipment shall be subsidiary to the bid item "Reinforced Concrete Inlet Structure".

GENERAL NOTE:
Use Concrete Class AAA (AE) throughout or mix used in concrete pavement. All exposed edges shall be bevelled with a 3/4" triangular molding.

Note:
See Sheet No. 50 for Grate Unit Details.

By	Approved	Revision
Date		
No.		

PAWNEE AVENUE
19TH TO MAIZE ROAD
CITY OF WICHITA, KANSAS
INLET STRUCTURE - STA. 21+52.50

POE & ASSOCIATES, INC.
CONSULTING ENGINEERS
5940 E. Central, Suite 200 ■ Wichita, KS 67208-4242
Phone 316/685-4114 ■ FAX 316/685-4444

PE

Engineer: P. FERGUSON
Designer: P. FERGUSON
Poe Job No.: 1793
Date: JULY 2005

Sheet
44 of 162