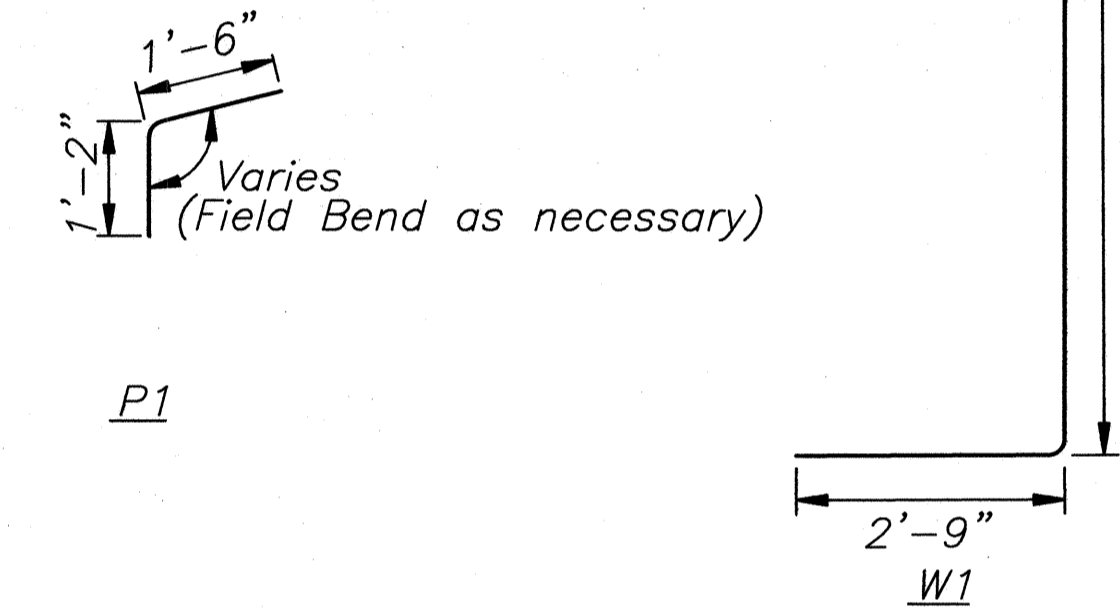


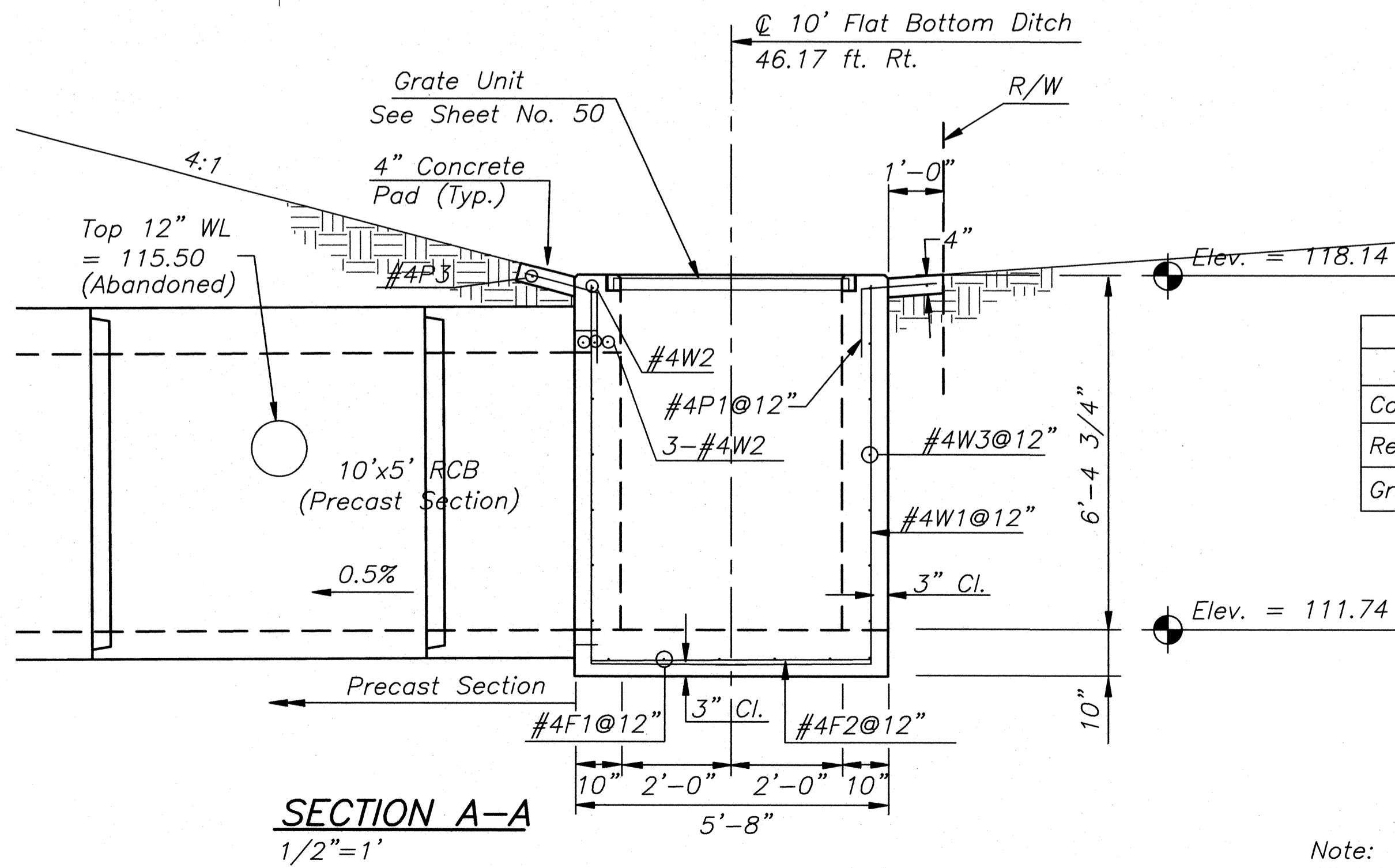
PLAN - INLET STRUCTURE
STA. 79+50.00 1/2"=1'

GENERAL NOTE:
Use Concrete Class AAA (AE) throughout or mix used in concrete pavement. All exposed edges shall be bevelled with a 3/4" triangular molding.

| BILL OF REINFORCING STEEL Non-Epoxy Coated - Grade 60 | | | | | | | |
|--|------|--------|--------|-----------|------|--------|--------|
| Straight Bars | | | | Bent Bars | | | |
| Mark | Size | Number | Length | Mark | Size | Number | Length |
| F1 | #4 | 5 | 13'-5" | P1 | #4 | 40 | 2'-7" |
| F2 | #4 | 13 | 5'-0" | W1 | #4 | 42 | 9'-8" |
| W2 | #4 | 14 | 5'-0" | | | | |
| W3 | #4 | 14 | 13'-5" | | | | |
| P2 | #4 | 2 | 7'-2" | | | | |
| P3 | #4 | 2 | 15'-0" | | | | |



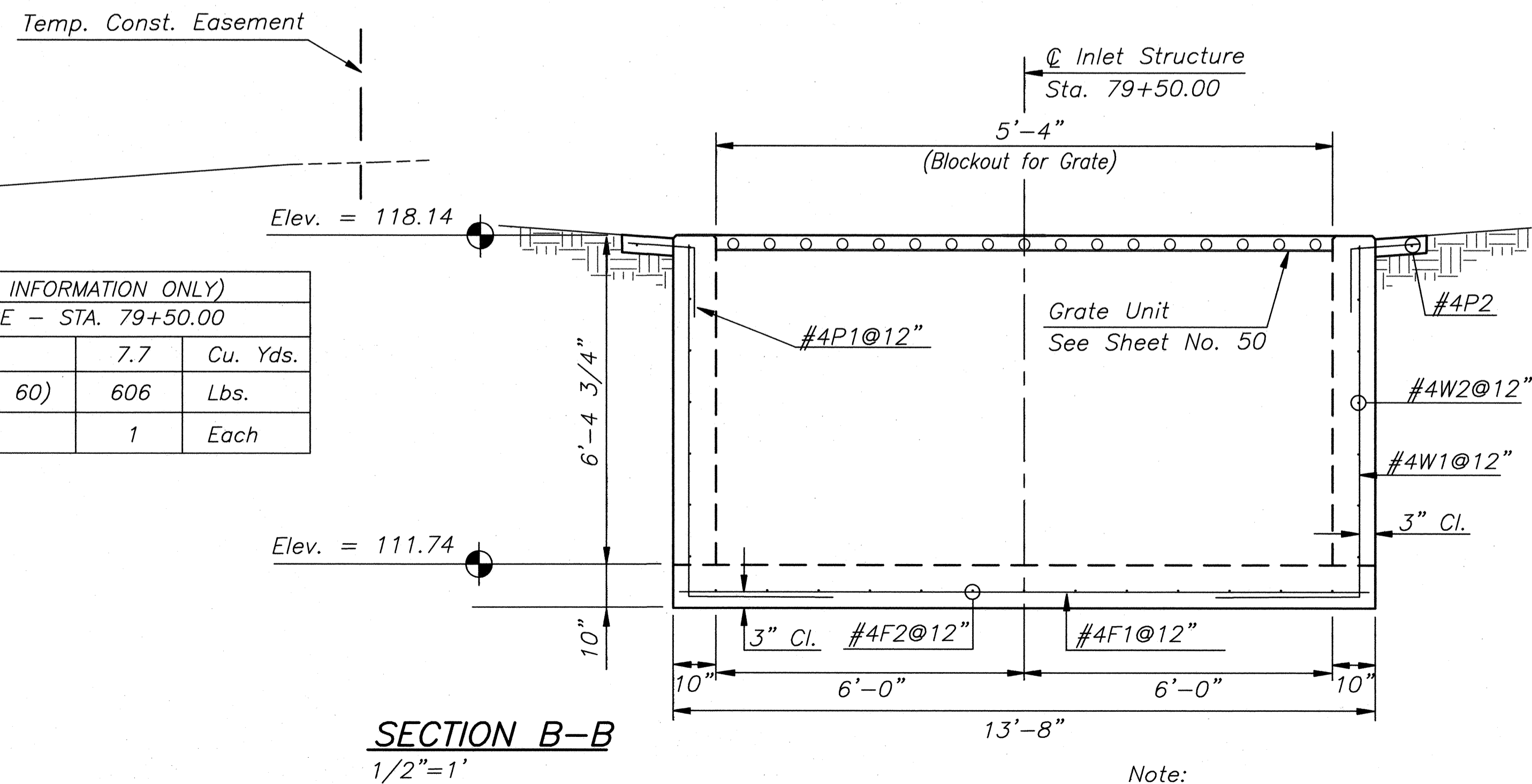
Bending Diagrams
(All dimensions are out to out of bars.)



SECTION A-A
1/2"=1'

| QUANTITIES (FOR INFORMATION ONLY) | | |
|-----------------------------------|-----|----------|
| INLET STRUCTURE - STA. 79+50.00 | | |
| Concrete AAA(AE) | 7.7 | Cu. Yds. |
| Reinforcing Steel (Grade 60) | 606 | Lbs. |
| Grate Unit | 1 | Each |

Note:
All labor, materials and equipment shall be subsidiary to the bid item "Reinforced Concrete Inlet Structure".

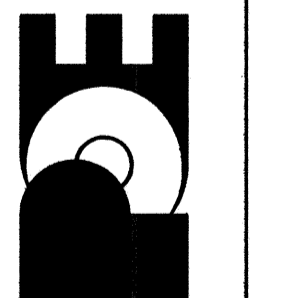


SECTION B-B
1/2"=1'

Note:
See Sheet No. 50 For Grate Unit details.

PAWNEE AVENUE
119TH TO MAIZE ROAD
CITY OF WICHITA, KANSAS
INLET STRUCTURE - STA. 79+50.00

POE & ASSOCIATES, INC.
CONSULTING ENGINEERS
5940 E. Central, Suite 200
Wichita, KS 67208-4242
Phone 316/685-4114 FAX 316/685-4444



FINAL
Engineer: P. FERGUSON
Designer: P. FERGUSON
Poe Job No.: 1793
Date: JULY 2005