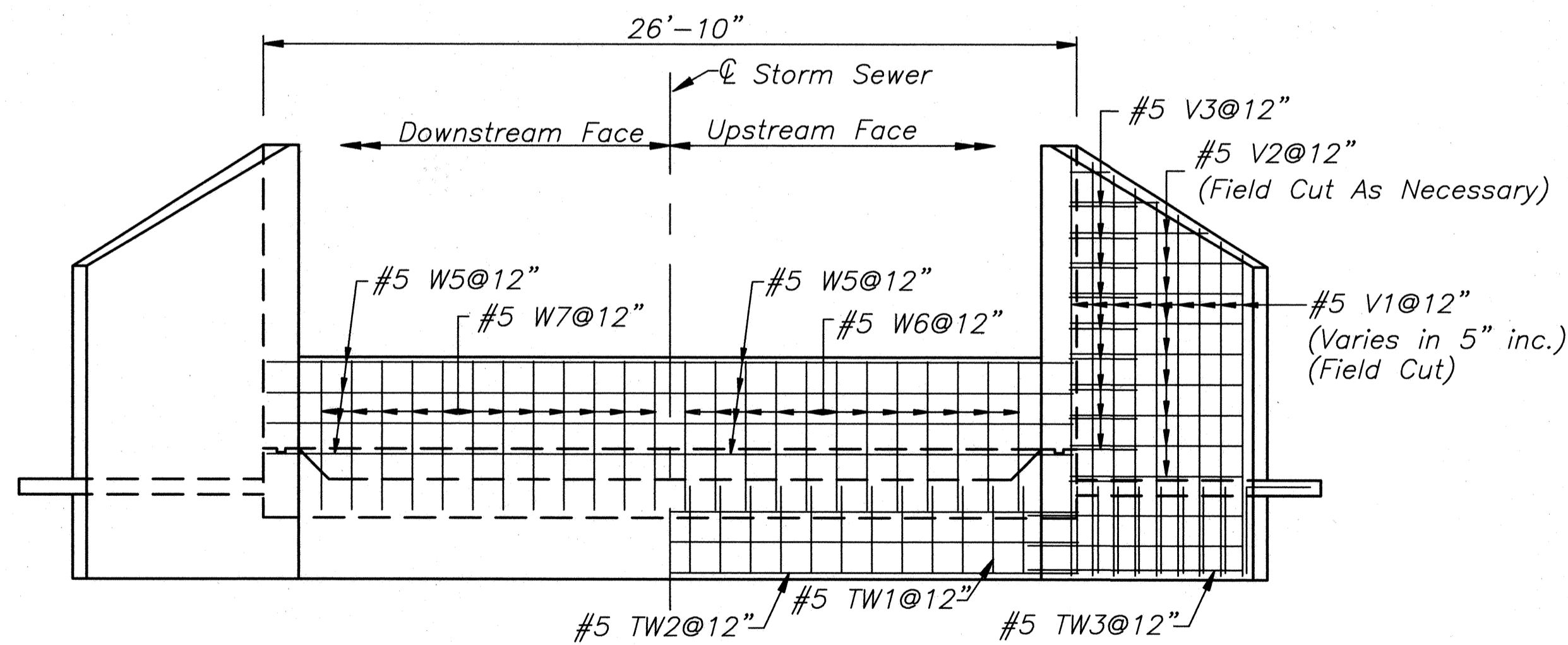
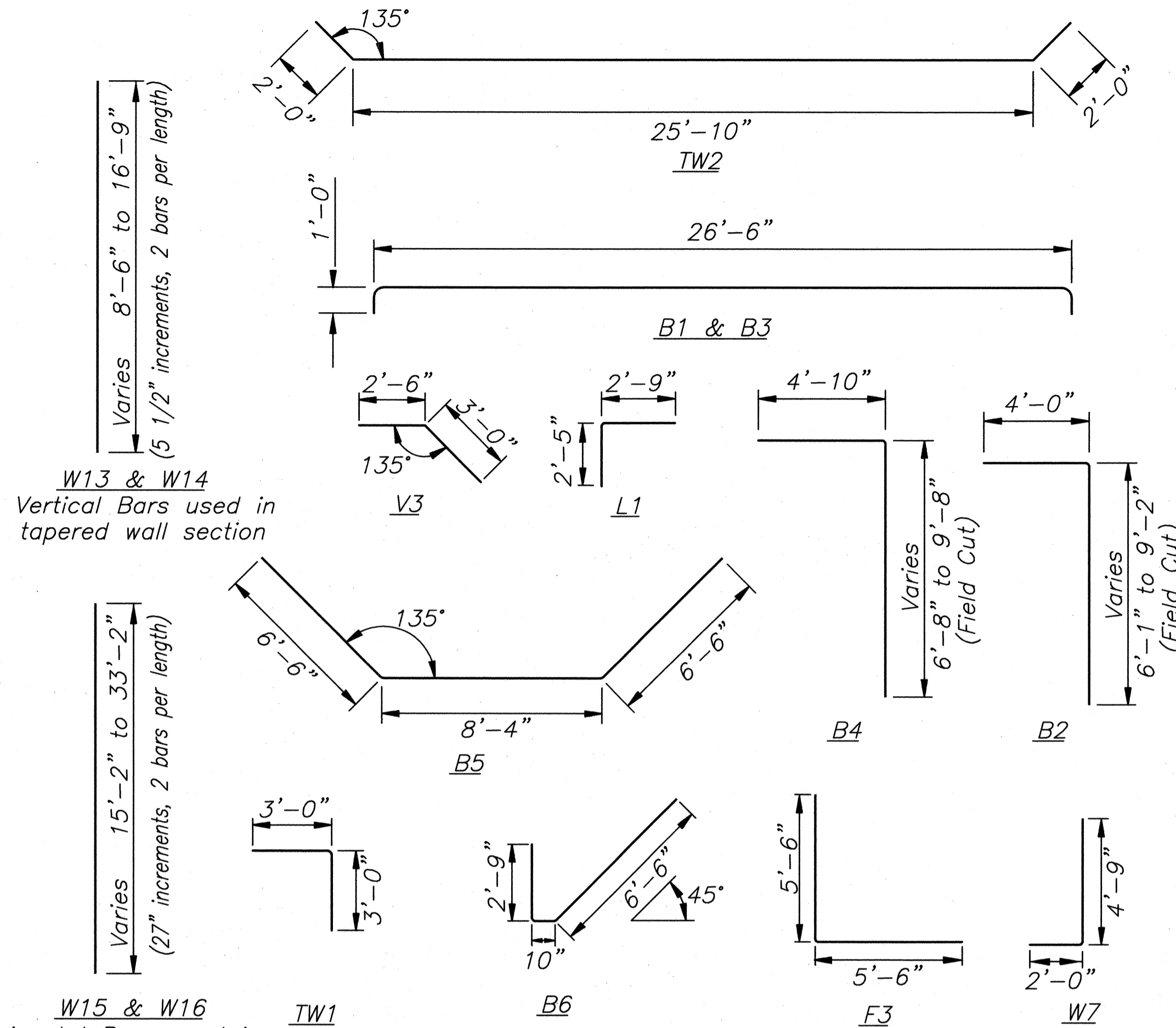


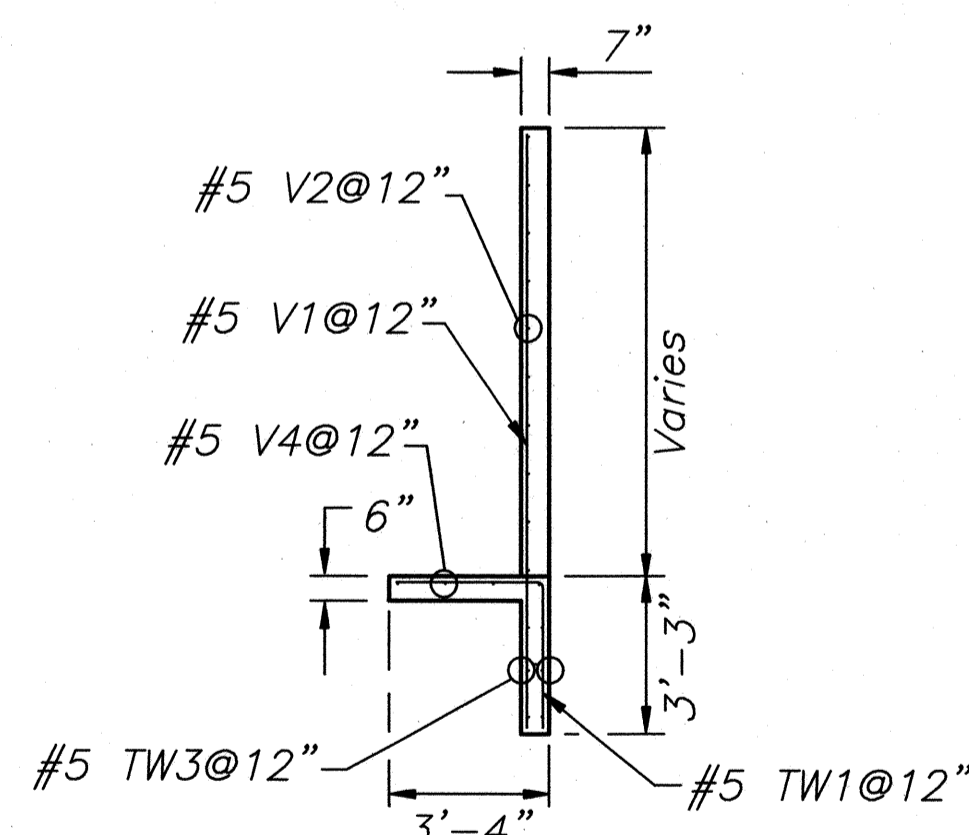
UPSTREAM ELEVATION
1/4"=1'



DOWNSTREAM ELEVATION
1/4"=1'



Bending Diagrams
(All dimensions are out to out of bars.)



WINGWALL SECTION
1/4"=1'

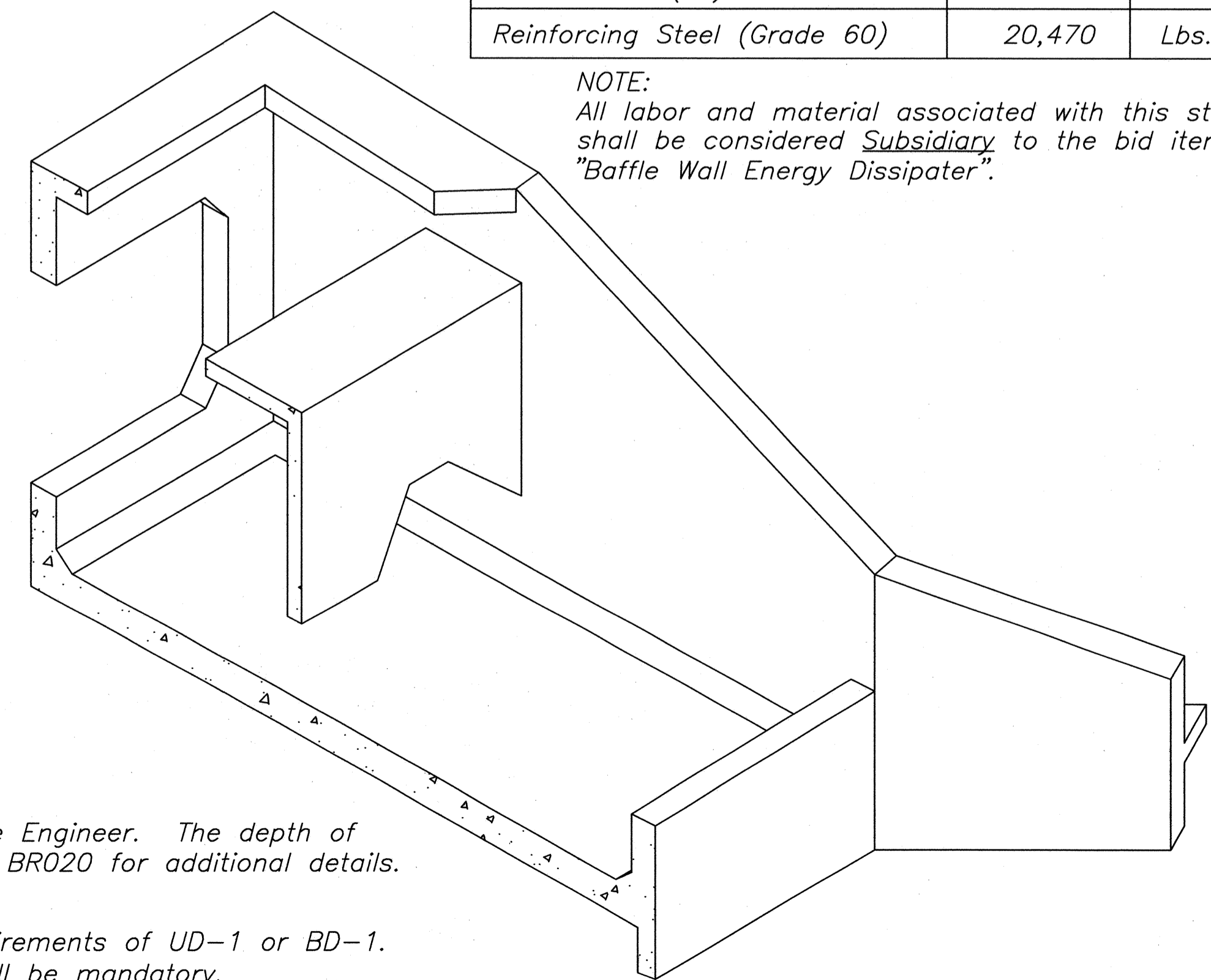
(FOR INFORMATION ONLY)
BILL OF REINFORCING STEEL
Non-Epoxy Coated - Grade 60

Straight Bars			Bent Bars				
Mark	Size	Number	Length	Mark	Size	Number	Length
W1	#8	38	16'-9"	W7	#5	24	6'-7"
W2	#8	20	34'-1"	F3	#8	92	11'-0"
W3	#5	38	16'-9"	B1	#6	6	28'-6"
W4	#5	20	34'-1"	B2	#4	24	Varies
W5	#5	8	26'-7"	B3	#4	22	28'-6"
W6	#5	50	5'-6"	B4	#4	24	Varies
W8	#7	17	26'-7"	B5	#5	2	21'-3"
W9	#8	17	26'-7"	B6	#5	4	10'-1"
W10	#8	18	6'-1"	TW1	#5	44	6'-0"
W11	#5	18	6'-1"	TW2	#5	3	29'-10"
W12	#5	24	11'-0"	V3	#5	18	5'-6"
W13	#8	38	Varies	L1	#5	40	5'-2"
W14	#5	38	Varies				
W15	#8	18	Varies				
W16	#7	18	Varies				
F1	#5	70	26'-7"				
F2	#5	54	34'-1"				
TW3	#5	20	9'-0"				
V1	#5	18	12'-3"				
V2	#5	20	9'-0"				
V4	#5	8	13'-6"				
L2	#5	6	14'-0"				
L3	#5	3	26'-7"				

QUANTITIES
(FOR INFORMATION ONLY)
USBR TYPE VI - BAFFLE WALL ENERGY DISSIPATER

Material	Quantity	Units
Concrete AAA(AE)	128.2	Cu. Yds.
Reinforcing Steel (Grade 60)	20,470	Lbs.

NOTE:
All labor and material associated with this structure shall be considered *Subsidiary* to the bid item "Baffle Wall Energy Dissipater".



HALF PERSPECTIVE

UNIT STRESSES:
Concrete Class AAA(AE) $f'c = 4,000$ psi
Reinforcing Steel (Grade 60) $f_y = 60,000$ psi

GENERAL NOTES

CONCRETE:
Concrete to be Class AAA(AE). Bevel all exposed edges of concrete with a 3/4" triangular molding, except as otherwise noted on the plans.

REINFORCING STEEL:
All Reinforcing Steel dimensions are out to out unless otherwise noted. All reinforcing steel shall conform to the requirements of ASTM A615-96, Grade 60.

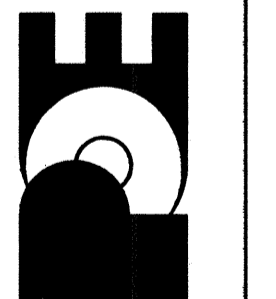
FOUNDATION STABILIZATION:
Foundation Stabilization may be required as directed by the Engineer. The depth of Foundation Stabilization shall be determined by the Engineer. See BRO20 for additional details.

GRANULAR BACKFILL (WINGWALLS):
Material for Granular Backfill (Wingwalls) shall conform to the requirements of UD-1 or BD-1. See BRO20 for additional details. Granular Backfill (Wingwalls) shall be mandatory.

No.	Date	By	Approved	Revision

PAWNEE AVENUE
119TH TO MAIZE ROAD
CITY OF WICHITA, KANSAS
USBR TYPE VI - BAFFLE WALL ENERGY DISSIPATER

POE & ASSOCIATES, INC.
CONSULTING ENGINEERS
5940 E. Central, Suite 200 ■ Wichita, KS 67208-4242
Phone 316/685-4114 ■ FAX 316/685-4444



FINAL
Engineer: P. FERGUSON
Designer: P. FERGUSON
Poe Job No.: 1793
Date: JULY 2005