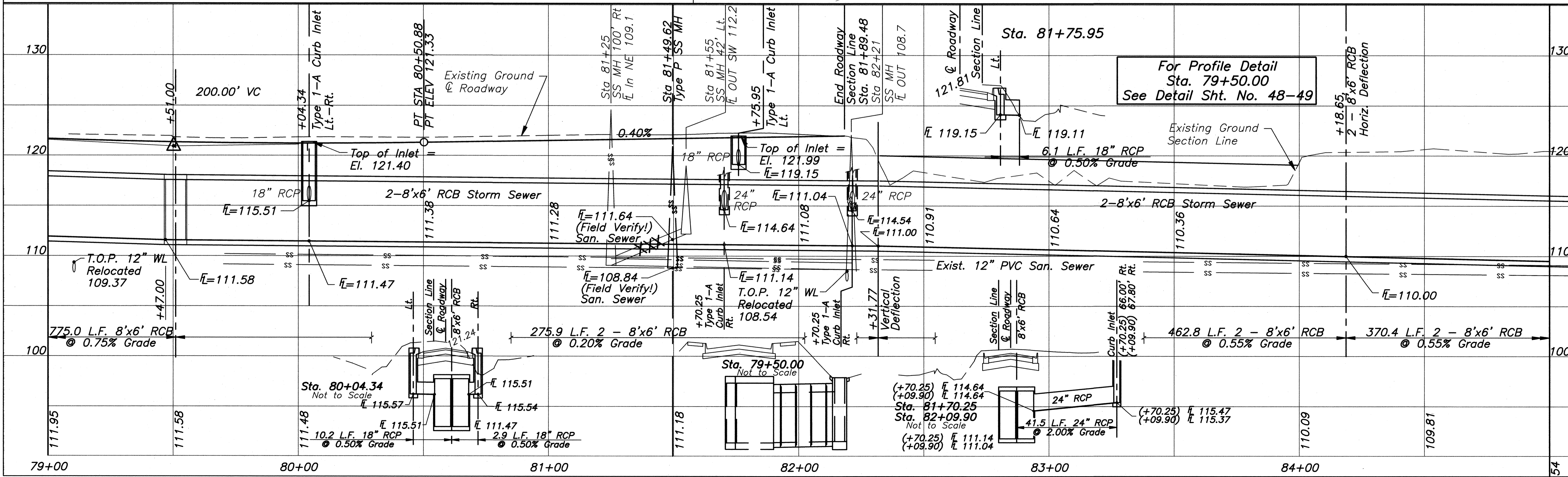


Note:
Waste up to 500 Cu. Yds. excavation from Storm Sewer construction north of R/W so as not to impede flow to the west.



Pawnee Avenue
 119th to Maize Road
 City of Wichita, Kansas
 RCP Storm Sewer Plan/Profile

POE & ASSOCIATES, INC.
 CONSULTING ENGINEERS
 5940 E. Central, Suite 200 • Wichita, KS 67208-4492
 Phone 316/685-4114 • FAX 316/685-4444

Engineer: P. FERGUSON
 Designer: J. UNRUH
 Proj. Job No.: 1793
 Date: JULY 2005

Sheet
 64 of 162