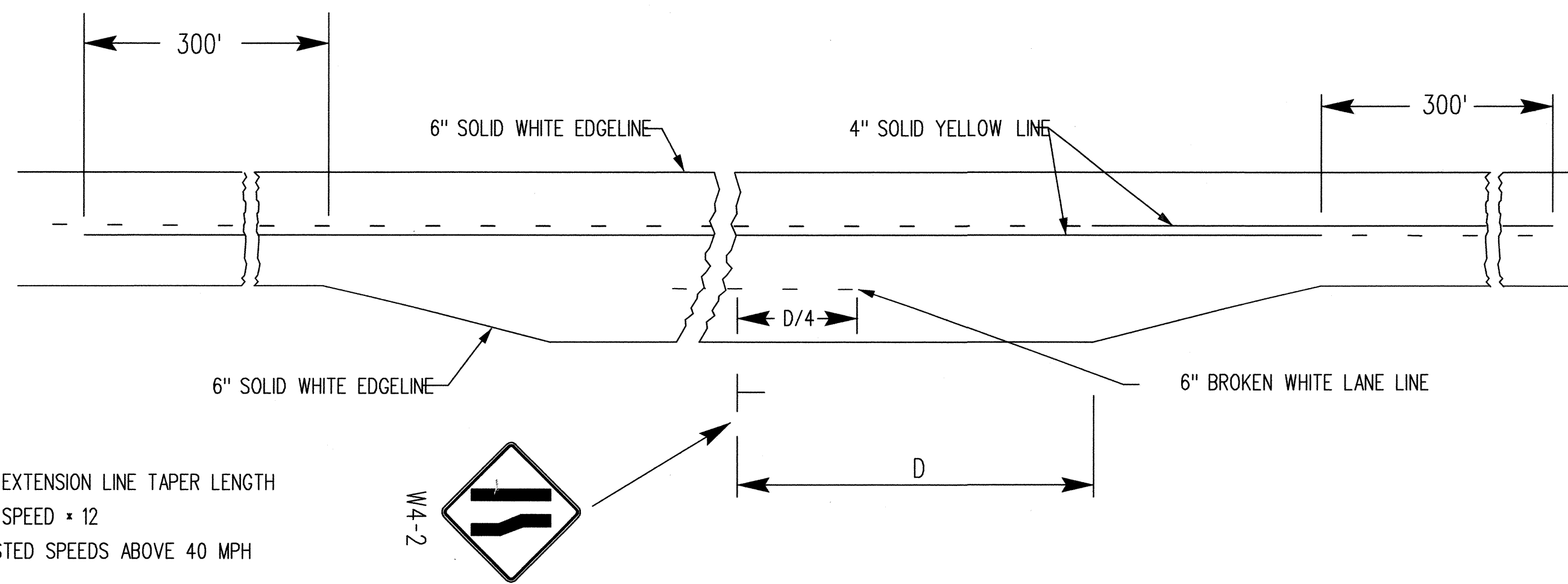
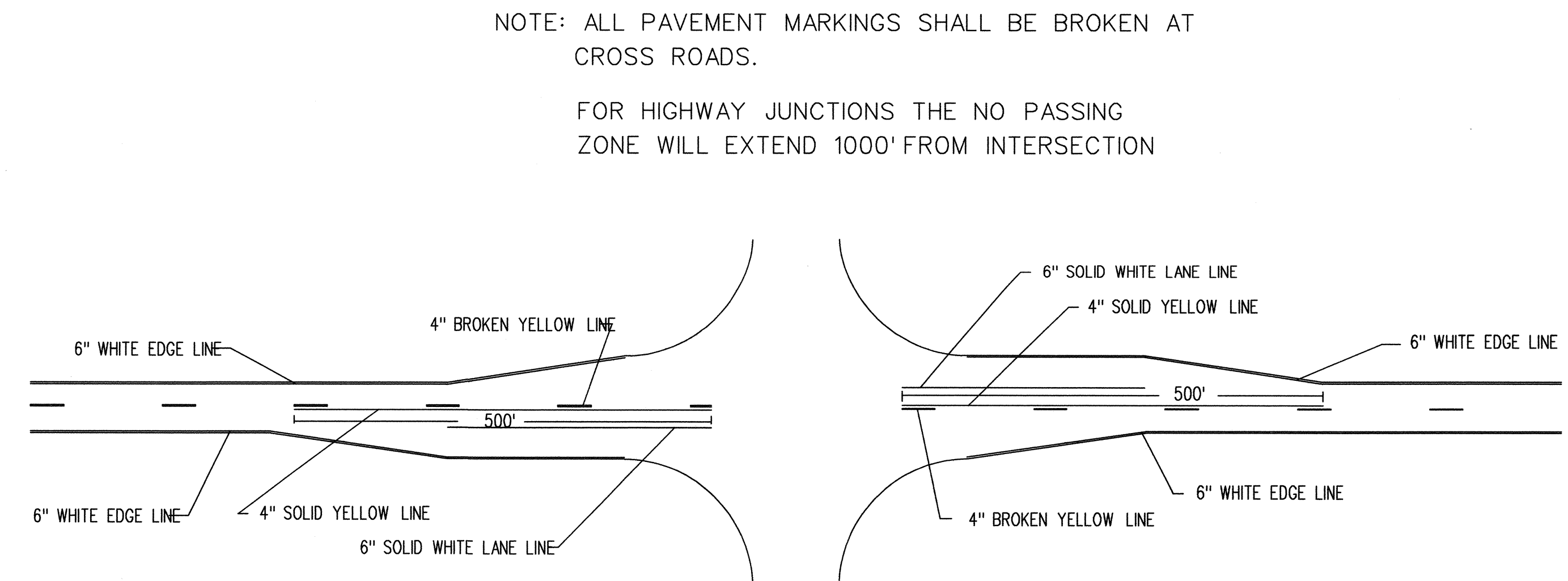


STATE	PROJECT NO.	YEAR	SHEET NO.	TOTAL SHEETS
KANSAS	87 N-0353-01	2005	95	162



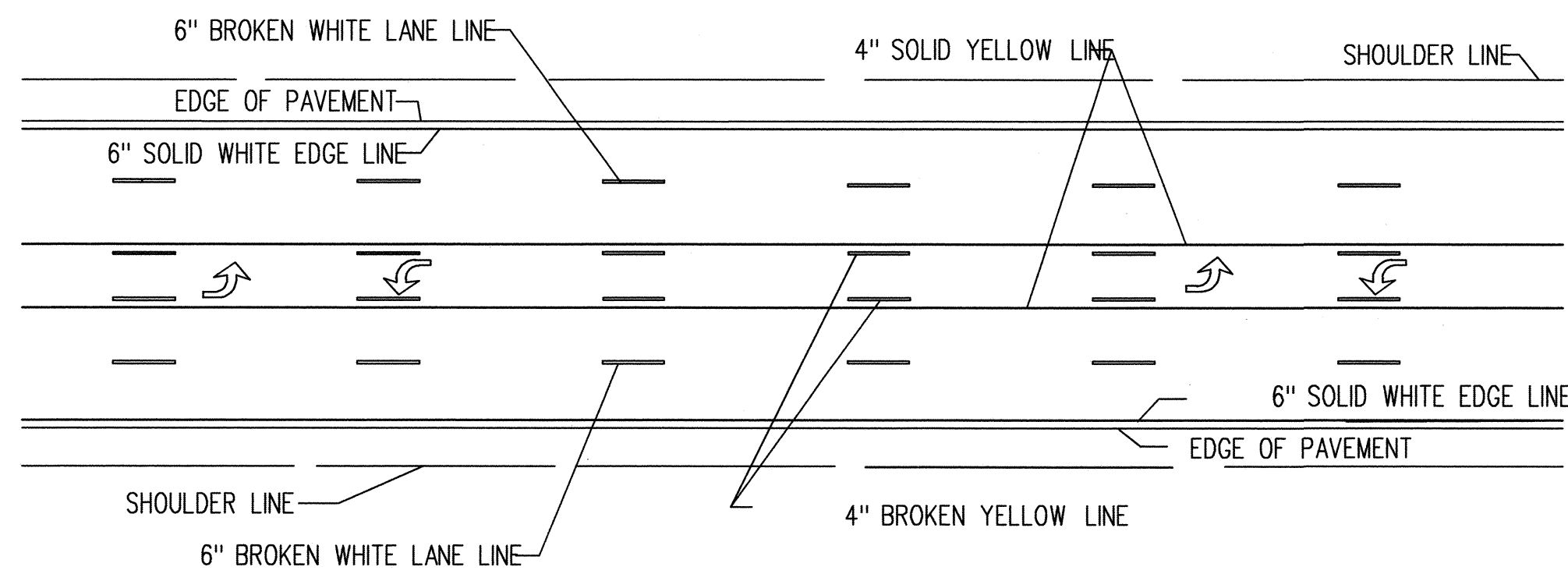
NOTE:
 DOTTED EXTENSION LINE TAPER LENGTH
 POSTED SPEED * 12
 FOR POSTED SPEEDS ABOVE 40 MPH

TYPICAL MARKING FOR AUXILIARY PASSING LANE

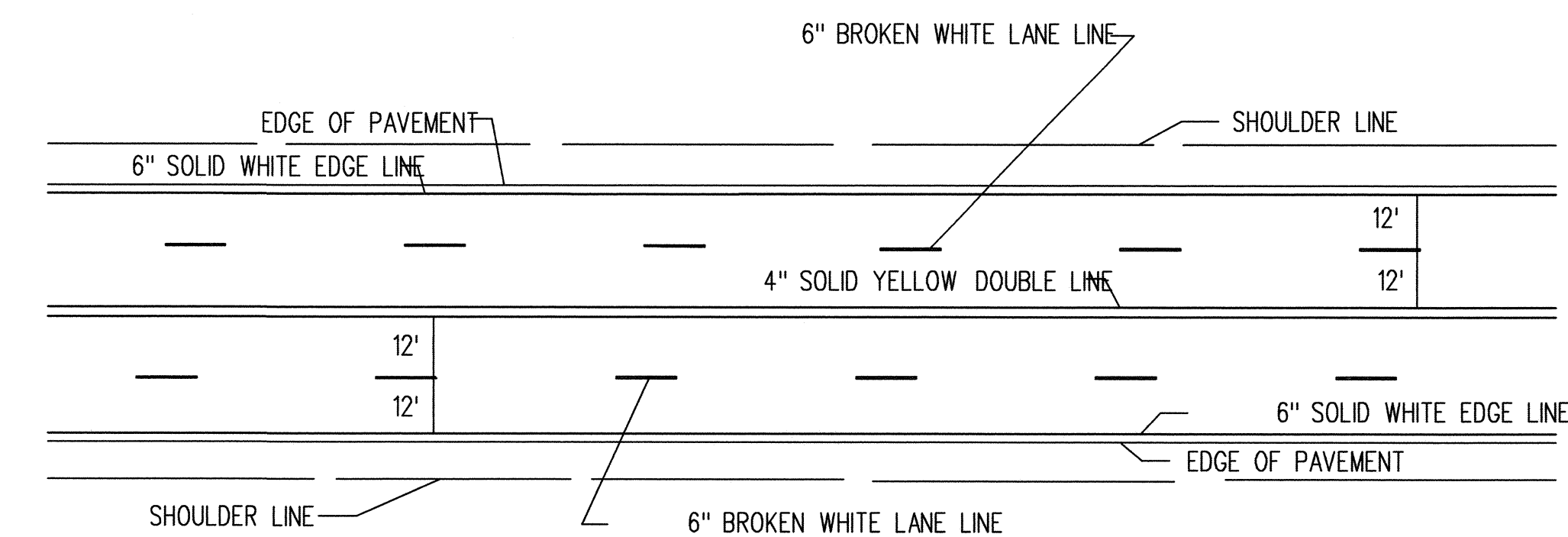


NOTE: ALL PAVEMENT MARKINGS SHALL BE BROKEN AT
 CROSS ROADS.
 FOR HIGHWAY JUNCTIONS THE NO PASSING
 ZONE WILL EXTEND 1000' FROM INTERSECTION

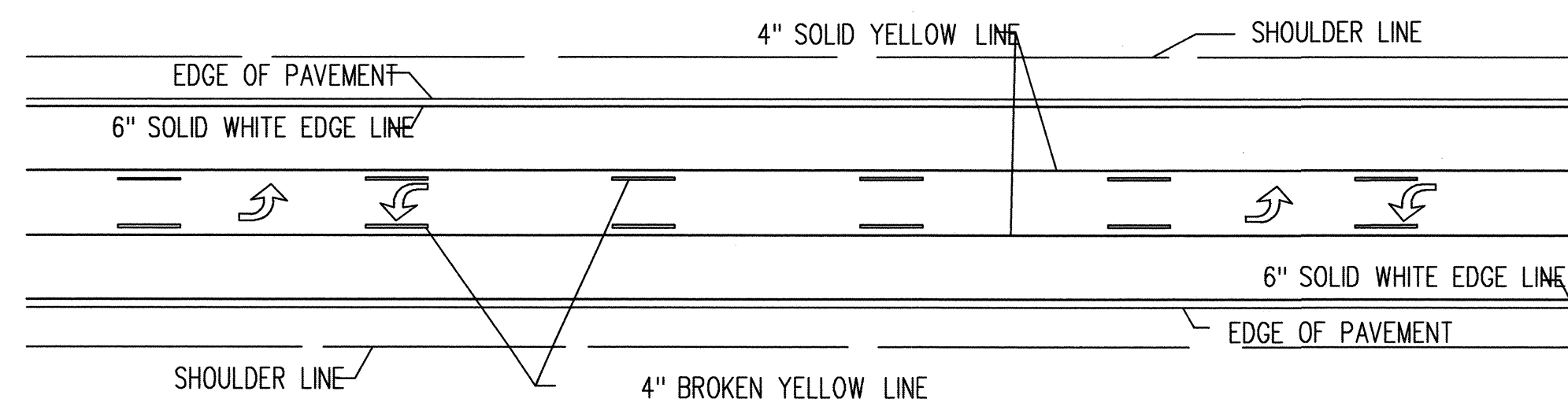
TYPICAL ROAD JUNCTION MARKINGS WITH BYPASS LANES



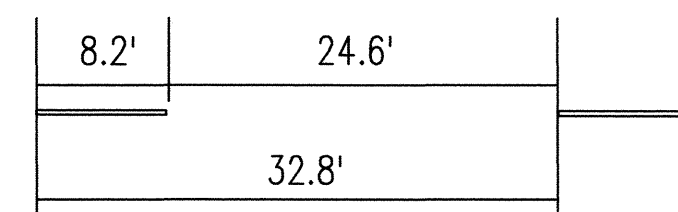
TWO-WAY LEFT TURN DETAIL FOR FIVE LANE ROADWAY



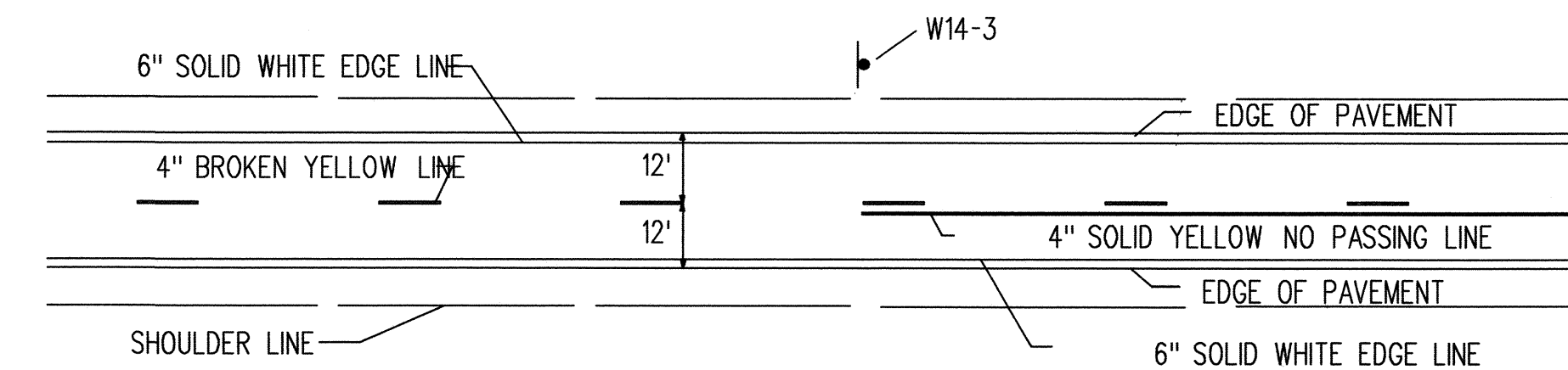
TYPICAL MARKINGS FOR FOUR LANE ROADWAY



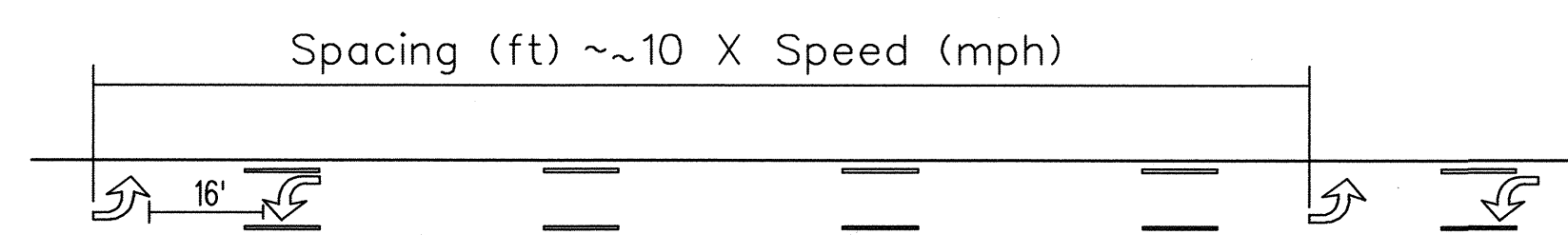
TWO-WAY LEFT TURN DETAIL FOR THREE LANE ROADWAY



TYPICAL SPACING
 FOR BROKEN LINES
 UNLESS OTHERWISE
 NOTED ON PLANS

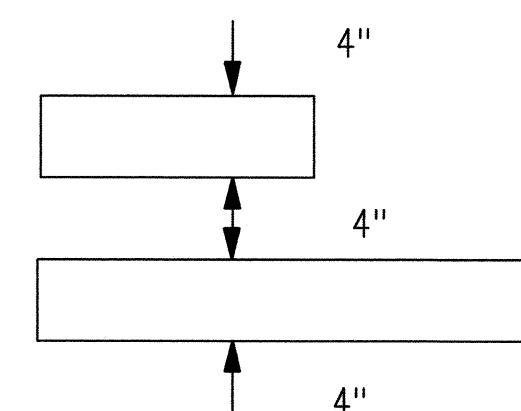


TYPICAL TWO LANE MARKINGS



TWO-WAY LEFT TURN ARROW SPACING DETAIL

NOTE: If arrows are used space the arrows as shown in
 the spacing detail



TYPICAL SPACING
 FOR NO PASSING LINES
 UNLESS OTHERWISE NOTED
 ON PLANS

NOTE:
 LONGITUDINAL PAVEMENT MARKING LINES SHALL BE OFFSET
 A MINIMUM OF 2" FROM LONGITUDINAL PAVEMENT JOINTS.

NOTE:
 ON NON I, US, AND K ROUTES, 4" EDGE LINES MAY BE INSTALLED.
 6" EDGE LINES ARE NOT REQUIRED ON NON I, US, AND K ROUTES.

Plotted By : \$\$\$USERNAME\$\$\$
 Plot File : \$\$\$DGNFILE\$\$\$
 Plot Date : \$\$\$SYTIME\$\$\$

NO.	DATE	BY	APPD
3			
2	09/20/2005	JFF	BDG
1	07/26/2005	JFF	BDG

DESIGNED: JFF, DETAILED: JFF, QUANTITIES: JFF, TRACED: JFF
 DESIGN CK: BDG, DETAIL CK: BDG, QUAN. CK: JFF, TRACE CK: JFF

KANSAS DEPARTMENT OF TRANSPORTATION
 TYPICAL PAVEMENT MARKING DETAILS FOR UNDIVIDED ROADWAYS
 TE308
 FHWA APPROVAL: 07/26/2005, APPD: Brian D. Gower