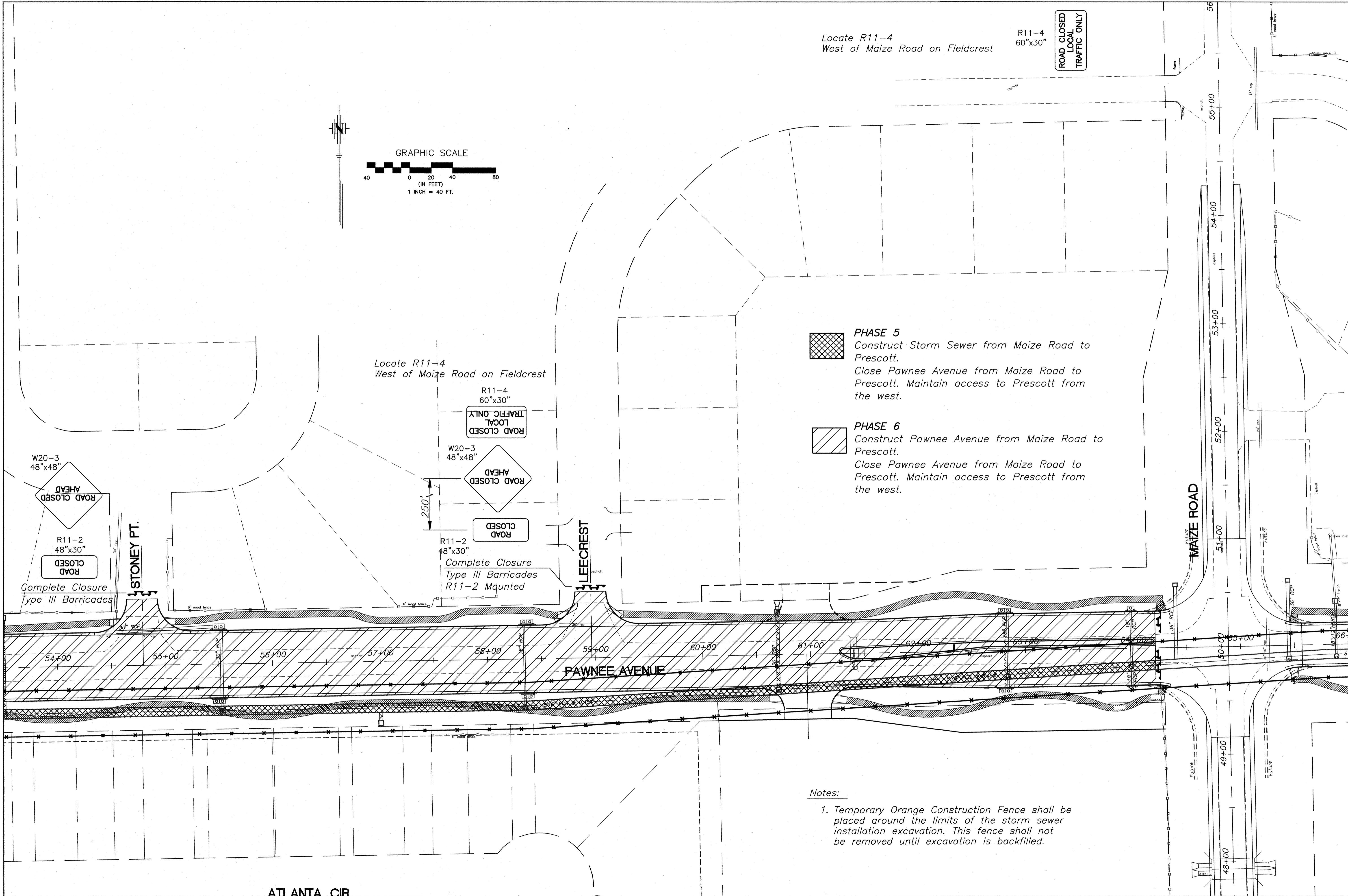


Locate R11-4
 West of Maize Road on Fieldcrest

R11-4
 60"x30"

ROAD CLOSED
 LOCAL
 TRAFFIC ONLY

- PHASE 5**
 Construct Storm Sewer from Maize Road to Prescott.
 Close Pawnee Avenue from Maize Road to Prescott. Maintain access to Prescott from the west.
- PHASE 6**
 Construct Pawnee Avenue from Maize Road to Prescott.
 Close Pawnee Avenue from Maize Road to Prescott. Maintain access to Prescott from the west.



Notes:
 1. Temporary Orange Construction Fence shall be placed around the limits of the storm sewer installation excavation. This fence shall not be removed until excavation is backfilled.

ATLANTA CIR

No.	Date	By	Approved	Revision

**PAWNEE AVENUE
 119TH TO MAIZE ROAD
 CITY OF WICHITA, KANSAS
 TRAFFIC CONTROL**

**POE & ASSOCIATES, INC.
 CONSULTING ENGINEERS
 5940 E. Central, Suite 200 ■ Wichita, KS 67208-4942
 Phone 316/685-4114 ■ FAX 316/685-4444**

FINAL

Engineer: P. FERGUSON
 Designer: J. UNRUH
 Pce. Job No.: 1793
 Date: JULY 2005

Sheet
 104 of 162