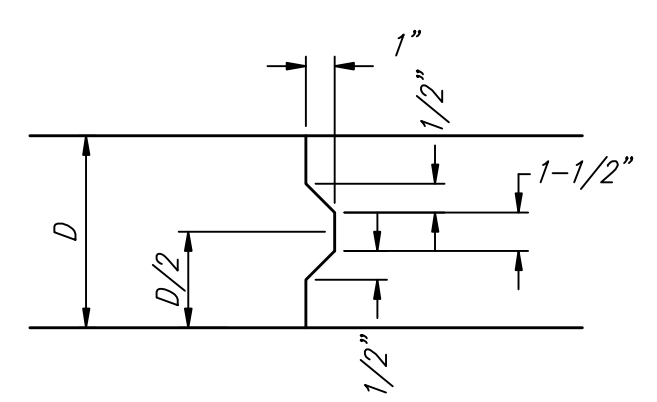
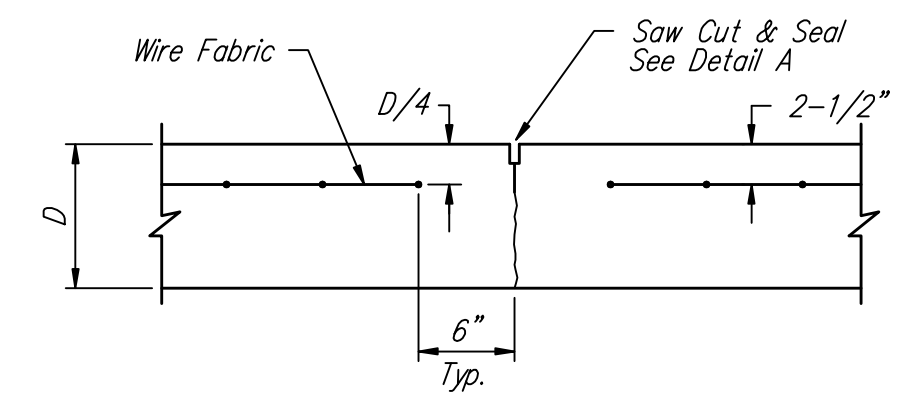


**EXPANSION JOINT**

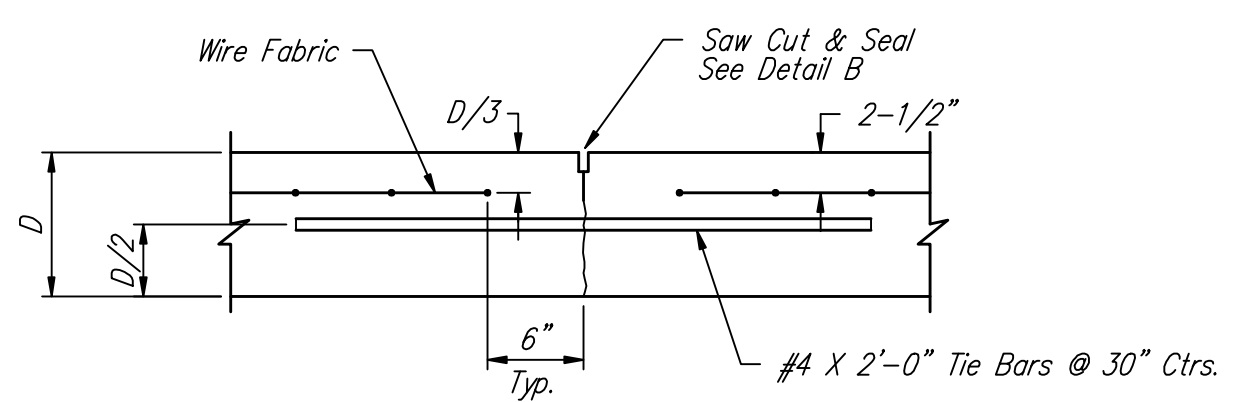
NOTE: Extra Thickness to be Subsidiary to Price of Square Yards Pavement



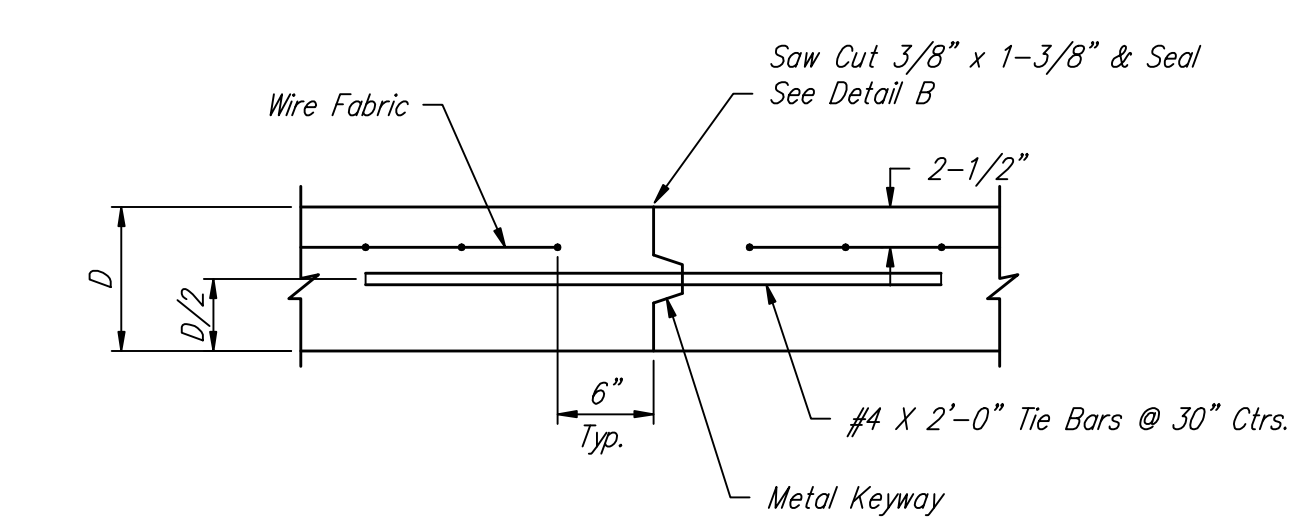
**KEYWAY DETAIL**



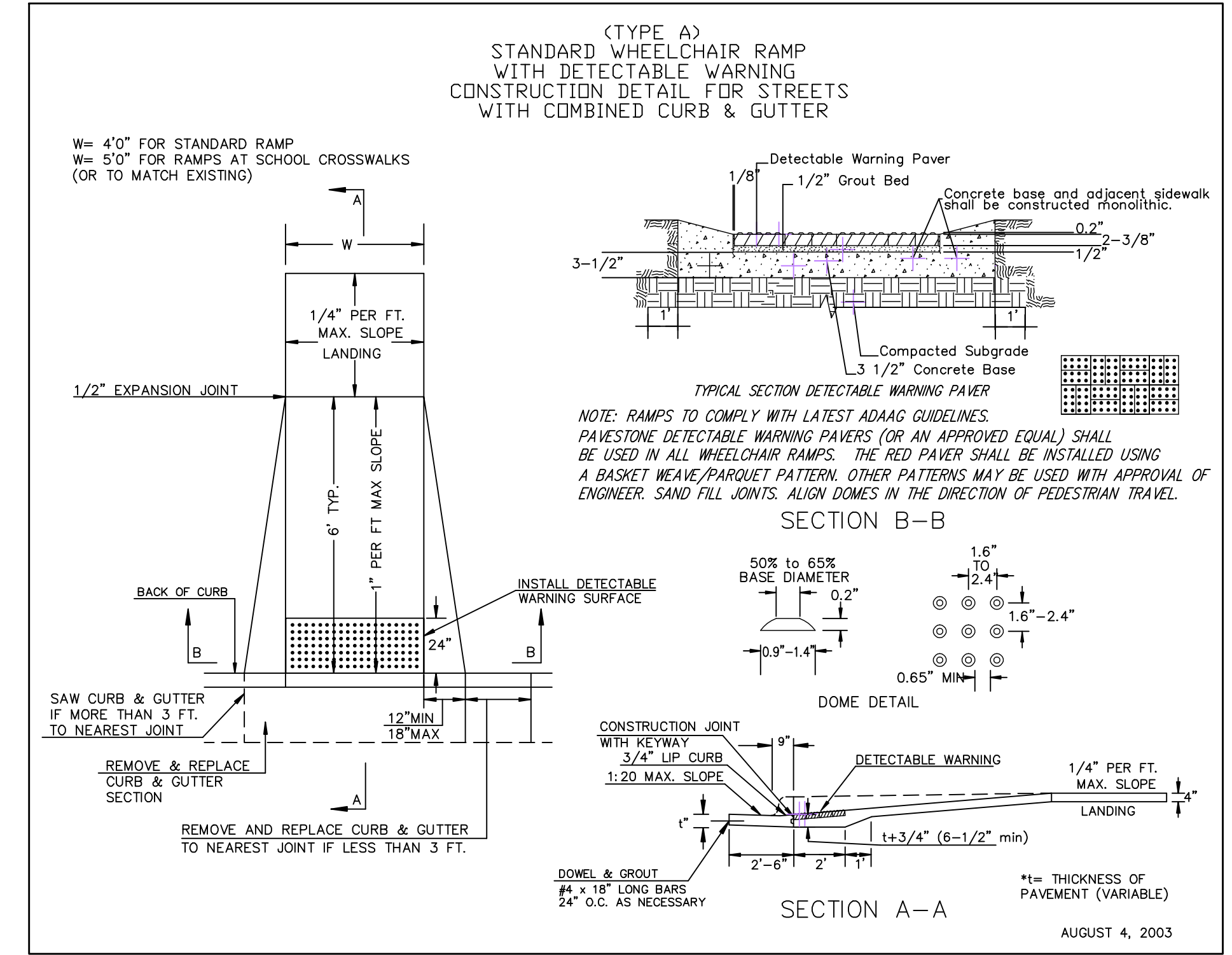
**CONTRACTION JOINT DETAIL (C.J.)**



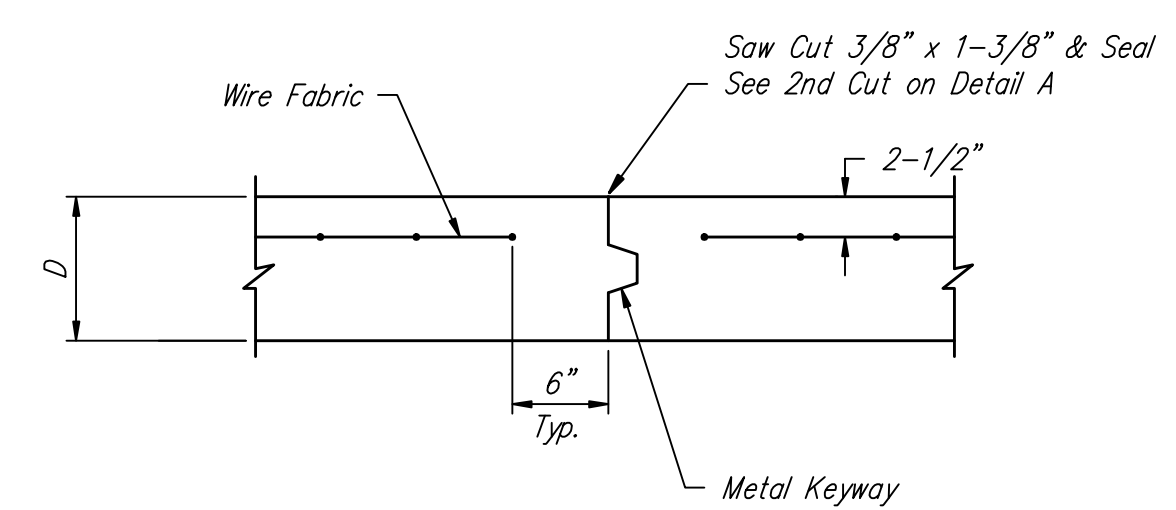
**LONGITUDINAL JOINT DETAIL (L.J.)**



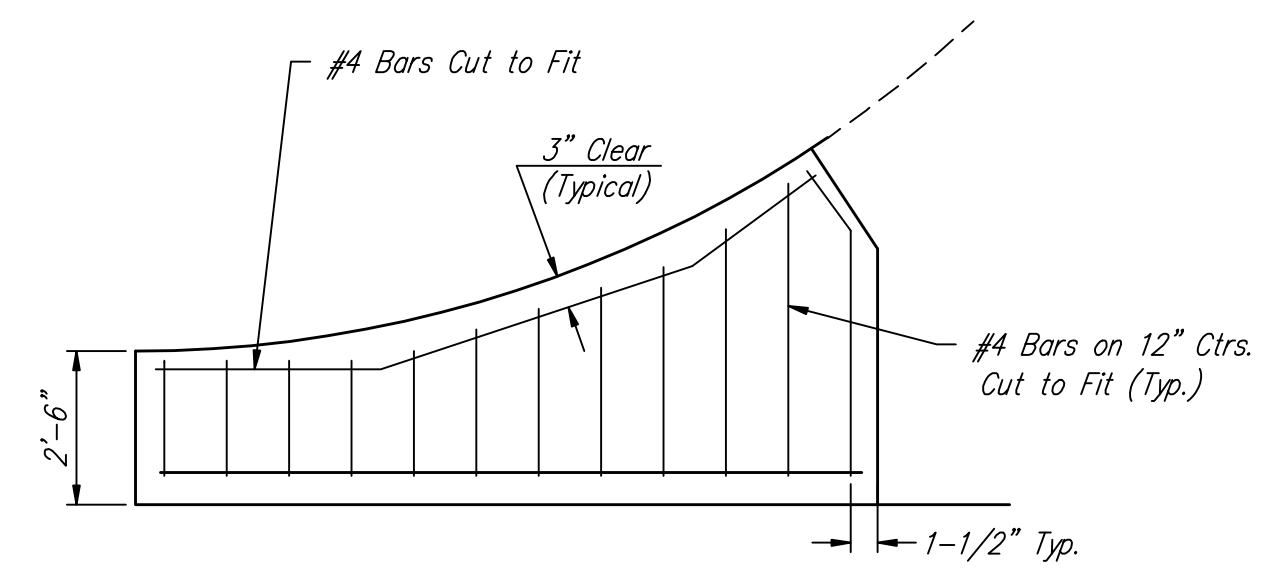
**OPTIONAL LONGITUDINAL JOINT DETAIL (L.J.) (CONSTRUCTION JOINT)**



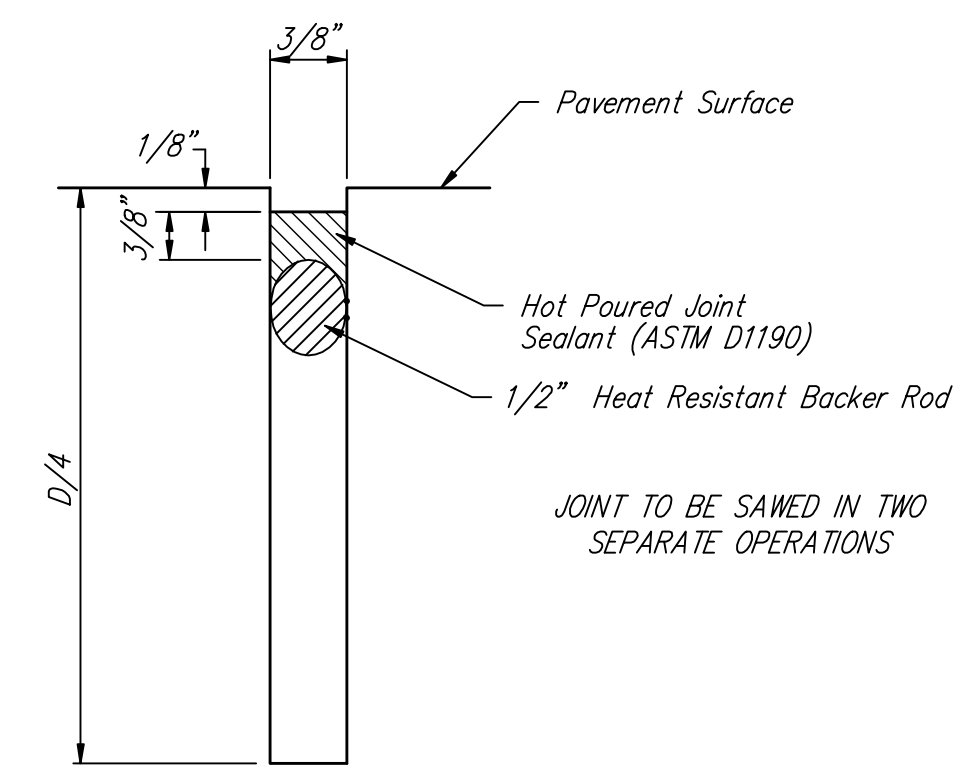
**WHEELCHAIR RAMP DETAIL**



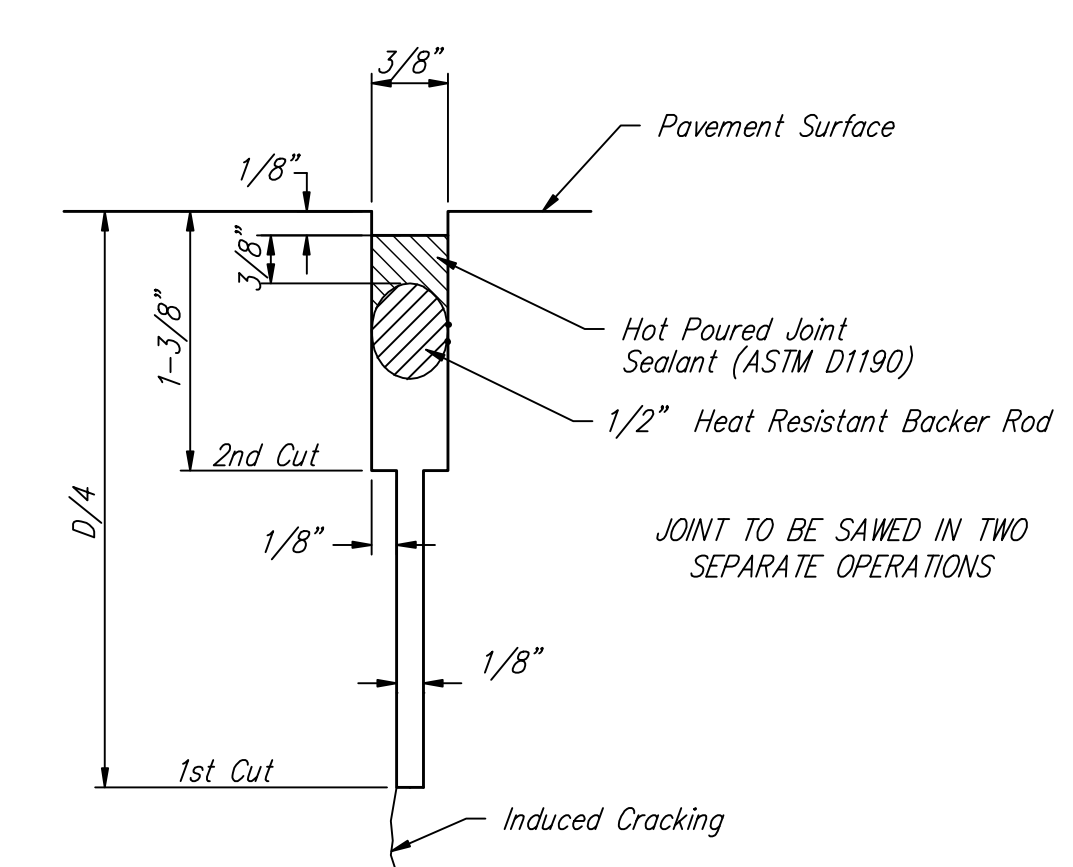
**OPTIONAL CONTRACTION JOINT (CONSTRUCTION JOINT)**



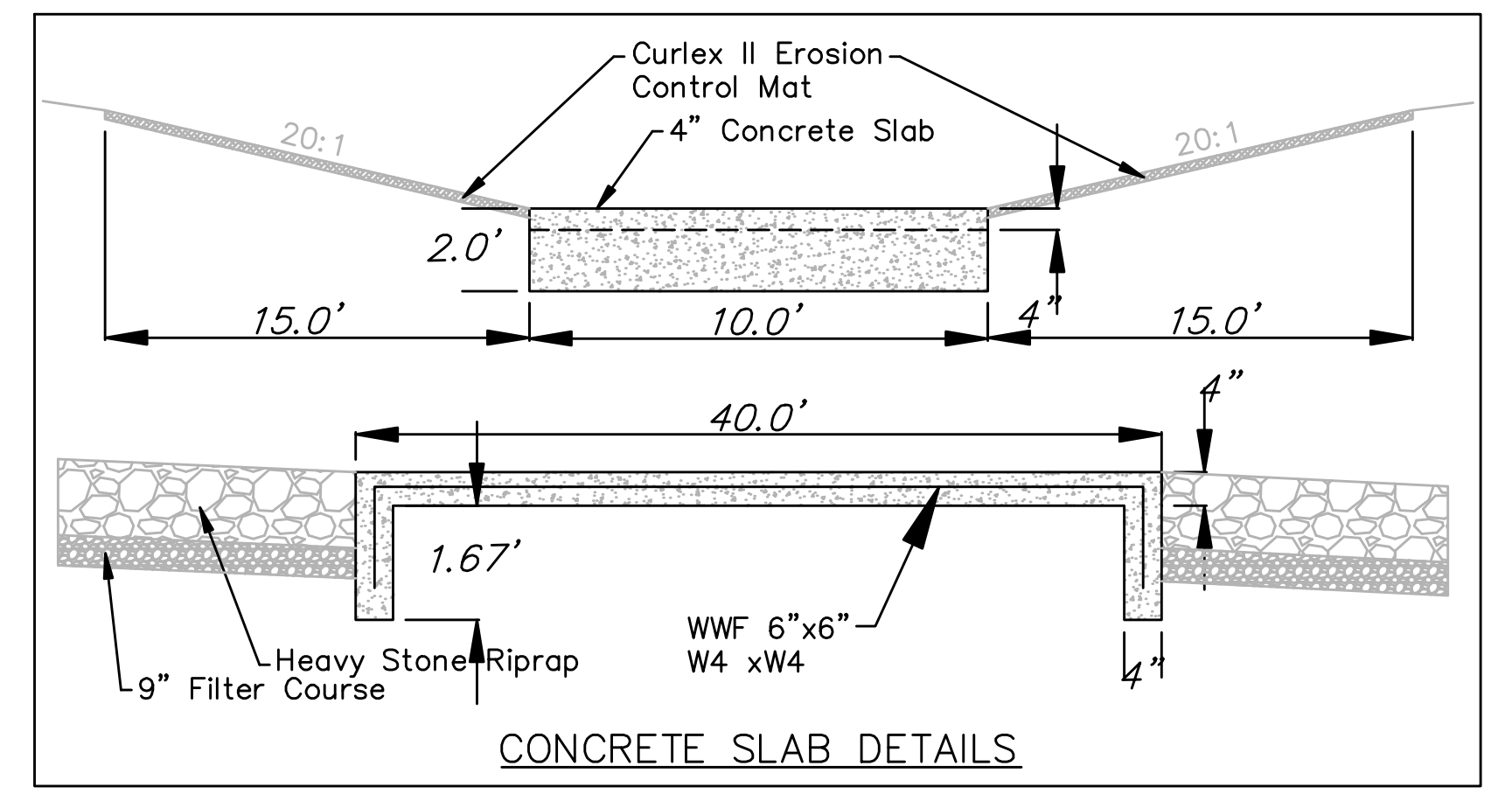
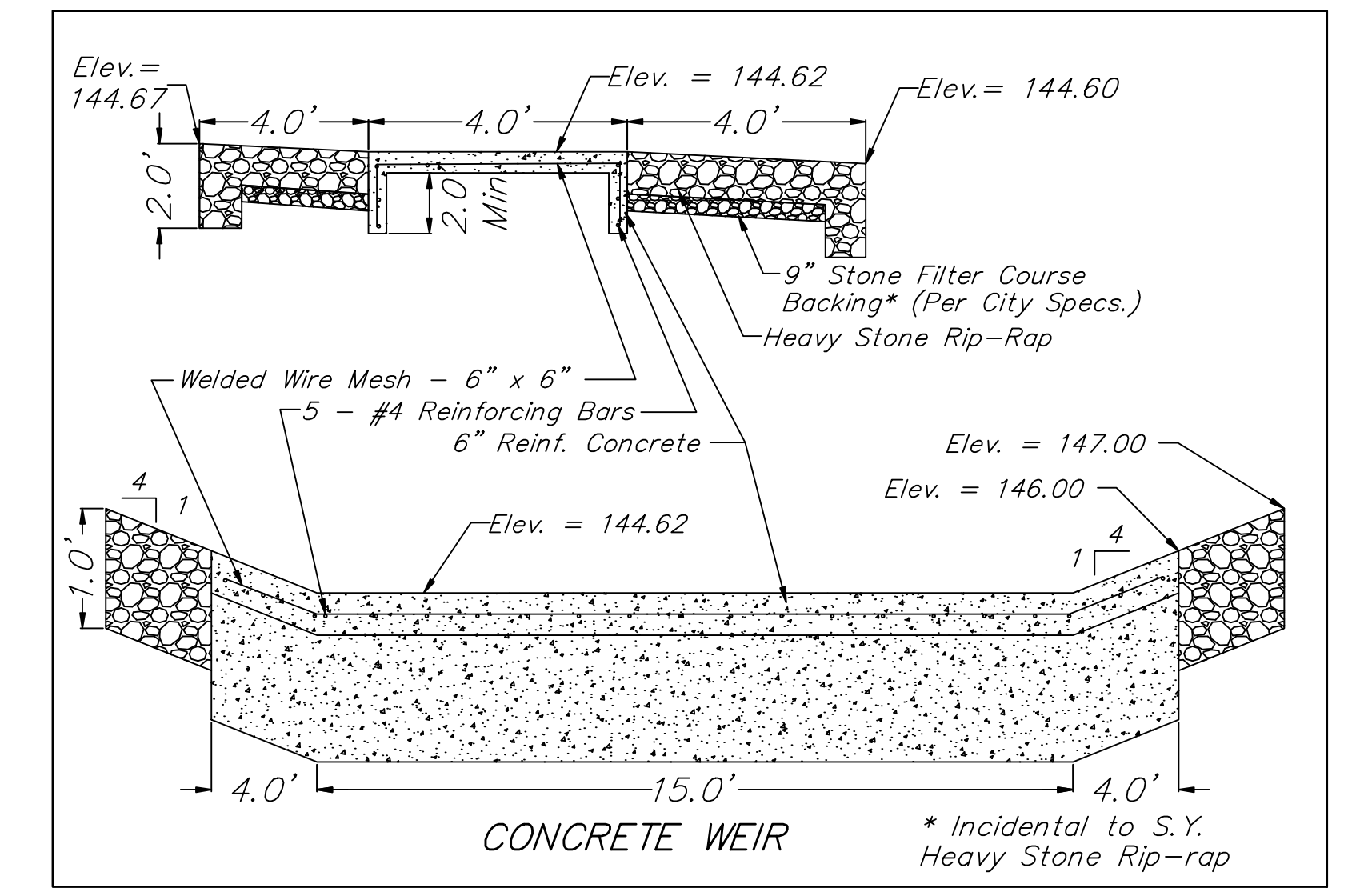
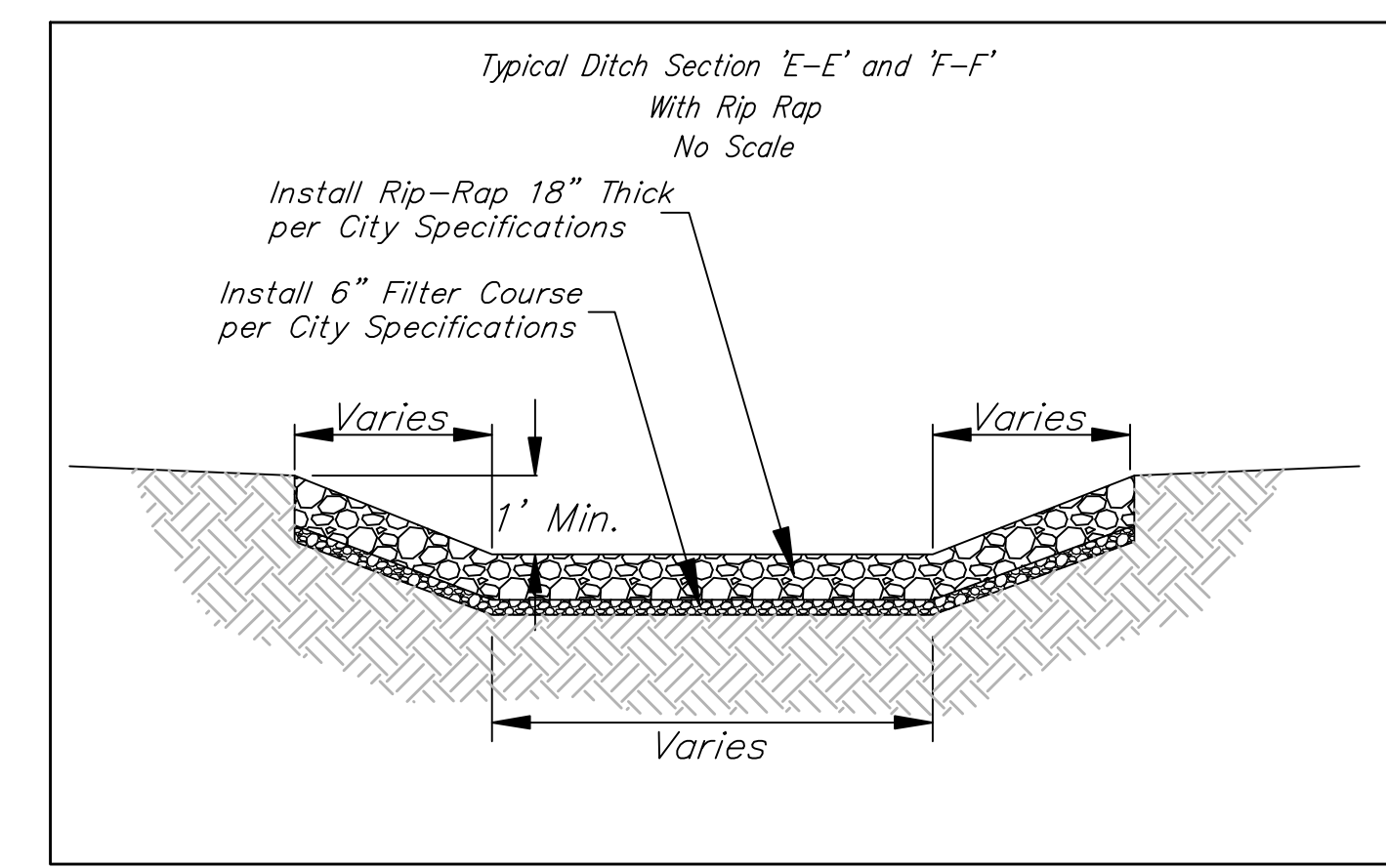
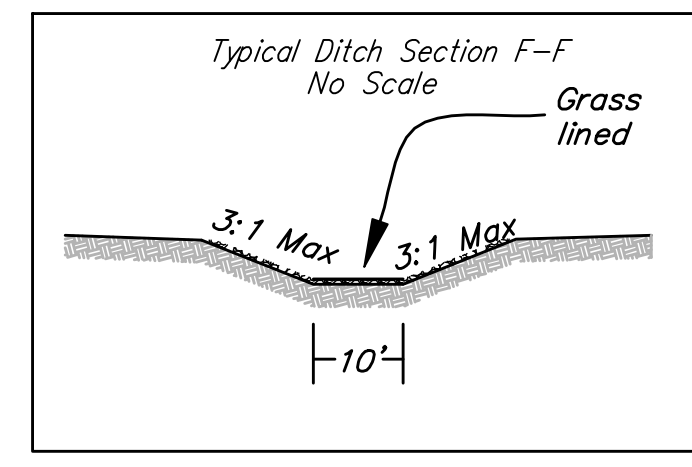
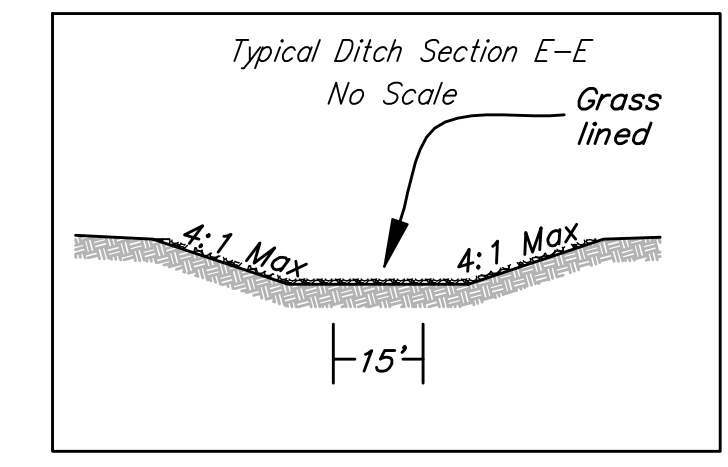
**WING REINFORCING DETAIL**



**SAW JOINT DETAIL "B"**



**SAW JOINT DETAIL "A"**



NOTE: 6" X 12" W4XW4 Wire Fabric Reinforcing Shall Be Placed So That The Wires With The 6" Spacing Will Run Parallel With The Longitudinal Joints.

		<b>RAY COUNTY 2ND</b>	
		<b>MISCELLANEOUS DETAILS</b>	
Baughman Company, P.A. 315 Elm St. White, NJ 07191 P116302721 P116302010			
ENGINEERING   SURVEYING   PLANNING   LANDSCAPE ARCHITECTURE			
PROJECT NUMBER	DESIGN	DRAWN	TNT
REVISIONS:	APPROVED	DATE	2/21/2010
	SCALE		NONE
	SHEET		<b>3 OF 21</b>
RAY County 2nd - Building CENTER 6609th Main Building 09-05-2121			