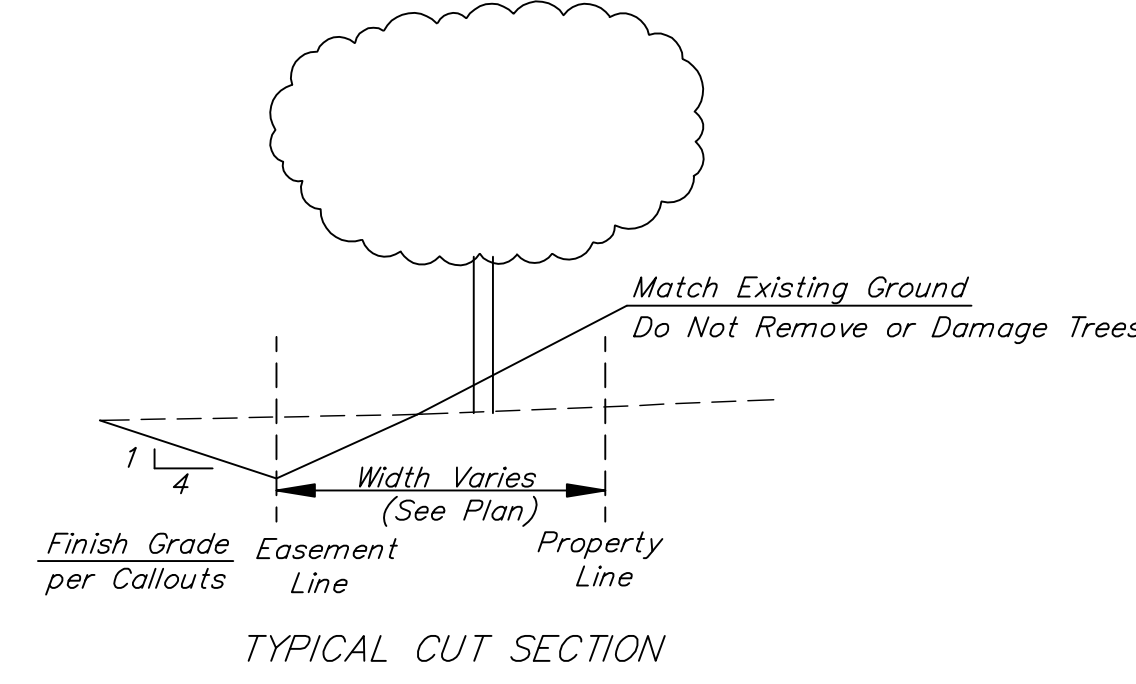
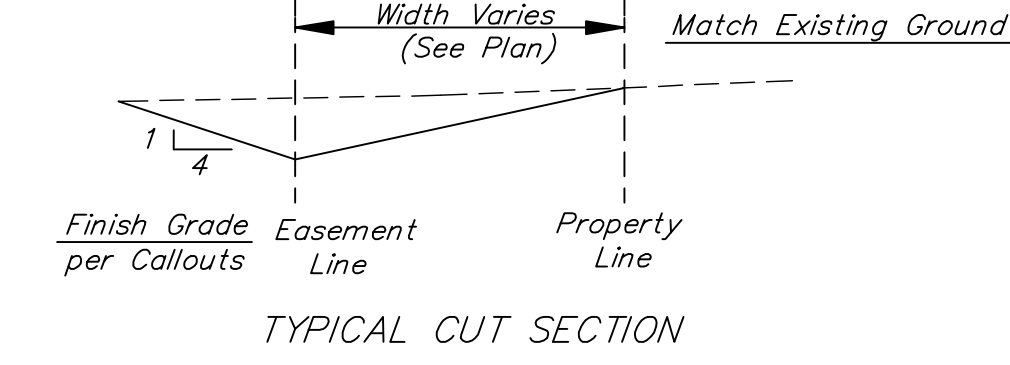
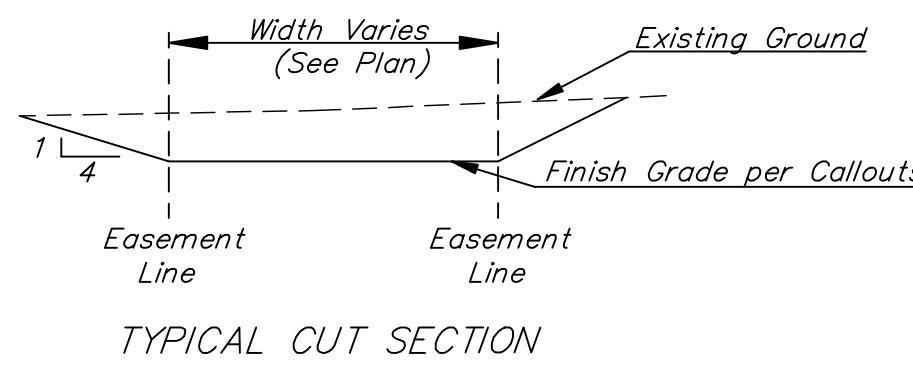
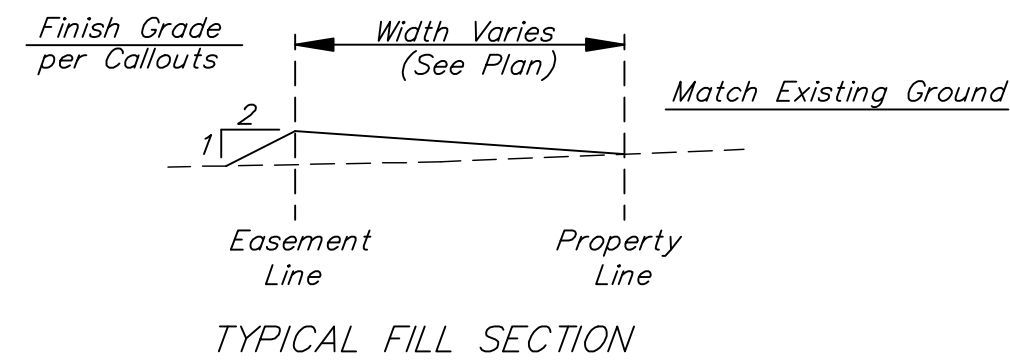
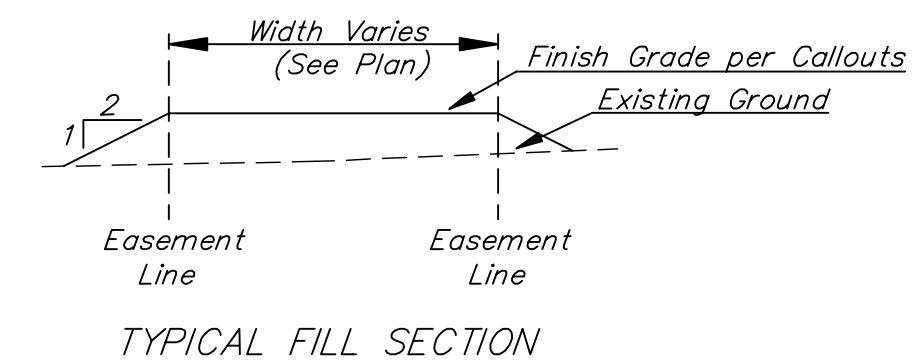


**BENCHMARK:**

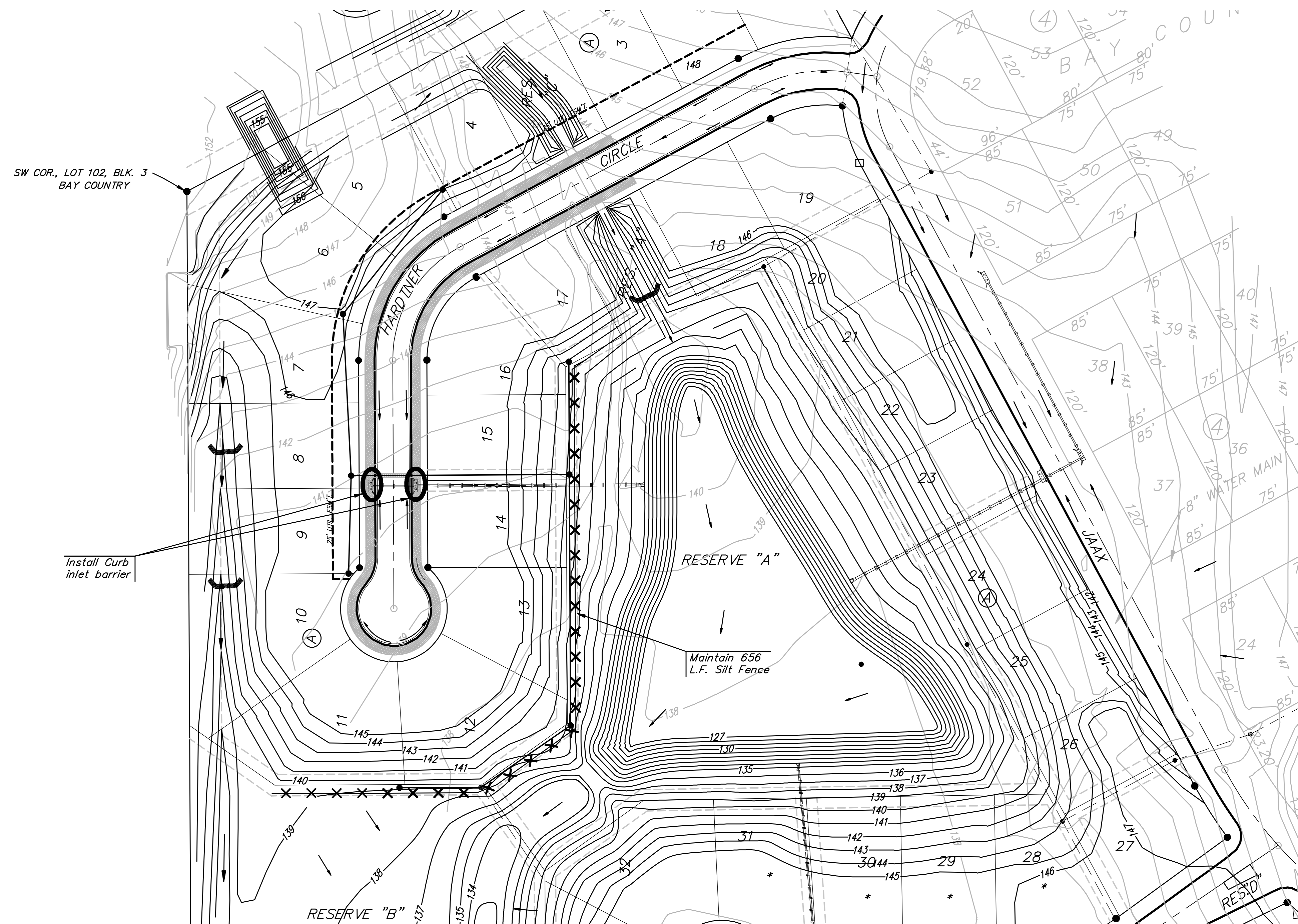
1. City of Wichita Disc 40' East and 46' South of Intersection of X's of 119th Street West and Central.  
Elev. = 156.93 (City Datum)
2. Railroad Spike in High Line Pole Located at the Northeast Corner of Lot 30, Block 1, Bay Country.  
Elevation = 154.44 (City Datum)
3. " " Cut in Top of Curb Located at the Northwest Corner of Lot 45, Block 1, Bay Country.  
Elevation = 153.87 (City Datum)



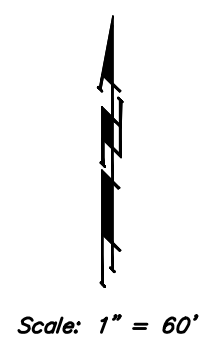
SECTION A-A

SECTION B-B

SECTION C-C



Easements have been rough graded with mass grading. Contractor shall fine grade the easements as shown to within  $\pm 0.2'$  of the elevations given on plan. The contractor shall 'straight' grade the easements between the elevations given. Where a callout designates 'Match,' the contractor will grade to the existing ground elevation. All costs for easement grading shall be included in lump sum bid item "Easement Grading."



	Existing Grade
	Proposed Grade
	Silt Fence
	Ditch Checks
	Curb Inlet Barrier
	Back of Curb Protection

EROSION CONTROL MEASURE	UNITS	QUANTITY
Install Silt Fence	Ea.	N/A
Maintain Silt Fence	L.F.	656
Install Erosion Control Berm	L.F.	N/A
Maintain Erosion Control Berm	L.F.	N/A
Install Curb Inlet Barrier	Ea.	2
Intall Ditch Checks	Ea.	3
Install Back of Curb Protection	S.Y.	1,072
Maintain Construction Entrance	Ea.	N/A
Install Curlex Erosion Control Mat	S.Y.	N/A

Quantities are For Information Only. Contractor shall verify quantities per final bid quantity sheet.

**B** **Baughman** **BAY COUNTRY 2ND**  
**Erosion Control Plan**  
**STREET IMPROVEMENT PLANS**

Baughman Company, P.A. 313 8th St. Wichita, KS 67211 P 316-262-7271 F 316-262-0149  
ENGINEERING | SURVEYING | PLANNING | LANDSCAPE ARCHITECTURE

<b>PROJECT NUMBER</b>	<b>DESIGN</b>
	NBW
<b>REVISIONS</b>	<b>DRAWN</b>
	TNT
	<b>DATE</b>
	2/22/2010
	<b>SCALE</b>
	NOTED
	<b>12 OF 21</b>

E:\eng\Bay Country 2nd\Hardner Ctr\BCP (6-508).dwg 08-05-E121