

BENCHMARKS:
 C.O.W. Disc SE Corner West St. & 47th S.
 Elev. = 92.29 (City Datum)

RR Spike in N. face of power pole, SE
 Corner 47th So. & Kessler
 Elev. = 91.74 (City Datum)

1" Cut in Top of Curb Adjacent to the NW
 Corner Lot 27, Block C.
 Elev. = 93.57 (City Datum)

SHEET INDEX

Title Sheet	1
35' Pavement Detail	2
29' Pavement Detail	3
Median Detail	4
Sign Detail	5
Miscellaneous Details	6
Traffic Control Details	7-10
Angel	11-15
Angel Ct.	16
Kessler	17
Kessler Ct.	18
SWS Line 1, 1A, 1B	19-22
SWS Line 2	23
SWS Line 3	24
SWS Line 4	25
SWS Line 5	26
Std. Type 1A Double Inlet Detail	27
Standard Drop Inlet Detail	28
Special Yard Inlet Detail	29
Inlet Manhole Detail	30
Manhole Ring & Cover Detail	31
Erosion Control/Easement Grading	32-33
Erosion Control BMPs	34-37
Street X-Sections	38-44
Coordinate Sheet	45
Copy of Plat	46

**PAVING FOR ANGEL, KESSLER,
 KESSLER CT. & ANGEL CT.**

to serve

ANGEL FIRE - PHASE II

Angel (Lots 1-17, Block E & Lots 42-48 & 49 & 54, Block B)
 from the west line of the plat, east to the west line of Kessler.
 Kessler (Lot 42, Block B & Lots 42 & 47, Block C, & Lot 17, Block E)
 from the north line of Lot 42, Block C, south to the south line of the plat;
 Kessler Ct. (Lots 42-49, Block C)
 from the east line of Kessler, east to and including the cul-de-sac.
 Angel Ct. (Lots 49-54, Block B)
 from the north line of Angel, north to and including the cul-de-sac.

CITY OF WICHITA, KANSAS



Jim Armour, P.E. City Engineer

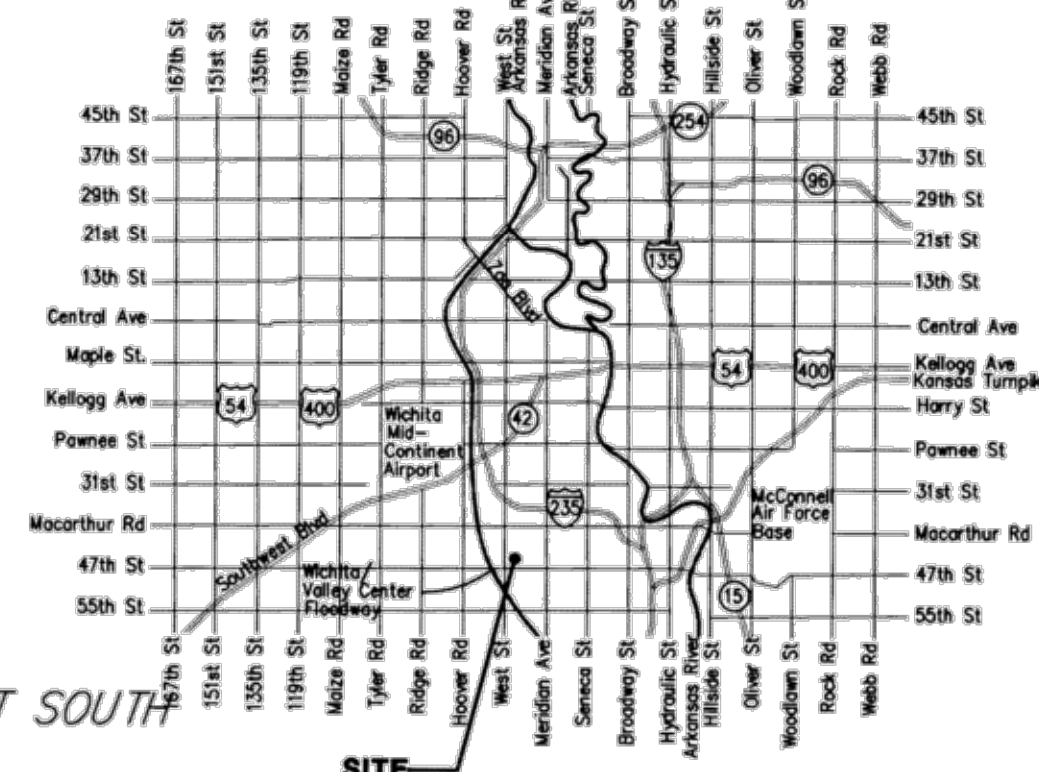
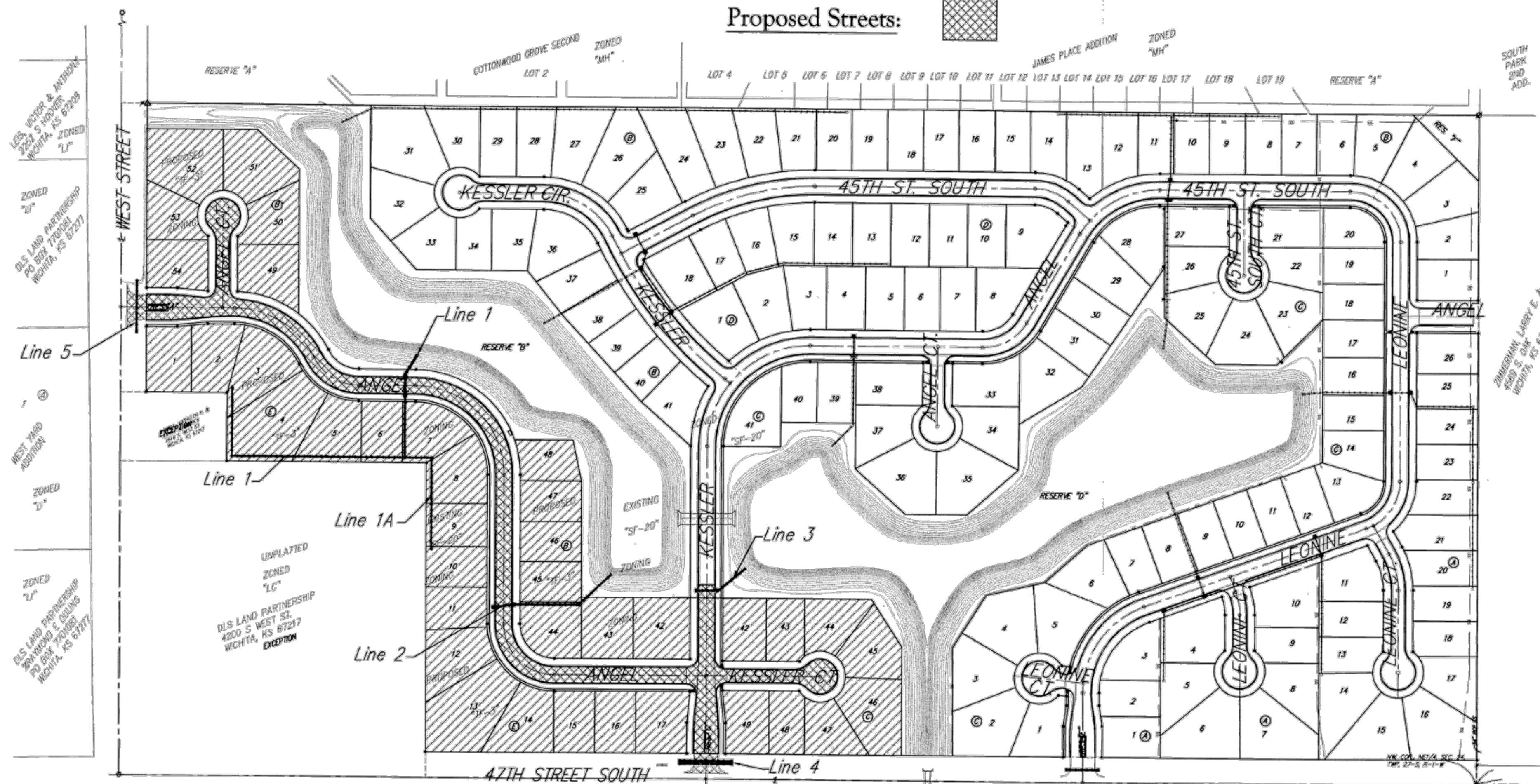
Project Number
 472-84886
 O.C.A. Number:
 766251

GENERAL NOTES:

- Contractor will be required to provide notice to utility companies a minimum of forty-eight (48) hours prior to any excavation, as follows:
 Kansas One-Call 687-2470
 The Contractor must notify the following in case of an emergency:
 Cox Communications 262-4270
 Kansas Gas Service 1-888-432-4950
 Westar Energy 393-8650
 Black Hills Energy 1-800-303-0357
 AT&T 268-2245
 City of Wichita Water Dept. 268-4563
 City of Wichita Sewer Maint. 268-4024
 City of Wichita Storm Sewer Maint. 268-4090
 City of Wichita Traffic Maint. 268-4034
- Utility service lines, poles, valve boxes, meters, and etcetera are to be adjusted as necessary by others prior to construction unless the plans specifically call for their adjustment by the Contractor or unless the plans specifically identify a utility to be adjusted by its owner during construction. Existing utilities and their location, as shown on the plans, represent the best information obtainable for design. The Contractor will be required to work around existing utilities within the right-of-way which do not conflict with proposed construction.
- Rubble from the removal of miscellaneous structures and excess excavation which is to be wasted shall be disposed of on sites to be provided by the Contractor. These sites shall be approved by the Engineer as to suitability, appearance and site location. Locations, in the opinion of the Engineer, that will leave an unsightly appearance will not be approved. All disposal sites must be approved by the Kansas Department of Health and Environment. Material either stockpiled or disposed of in a flood plain would require a Kansas State Board of Agriculture permit. Any material dumped in waters of the United States or wetlands is subject to U.S. Corps. of Engineers permitting regulations. Any material buried or stockpiled beyond approved construction limits would require additional archaeological investigations unless buried in a previously approved borrow location.
- Trees and shrubs in public right-of-way which are in direct conflict with proposed new construction shall be removed by the Contractor ONLY with the Developer or Baughman Company approval. Trees and shrubs which are not in direct conflict with proposed new construction shall be saved and protected from damage.
- The Contractor shall give all property owners and/or tenants of developed property abutting the construction of this project a minimum of ten (10) days notice prior to start of construction.
- The Contractor shall be responsible for preserving property irons. The Contractor will be required to re-establish any property irons which are damaged or destroyed by his construction operations. Such irons shall be re-established by a licensed land surveyor in accordance with state laws.
- Cross Sections Reflect earthwork topography as of 02/15/2010. Contractor shall satisfy himself with the earthwork quantities as bid for excavation and compacted fill prior to bidding. No additional payments or change orders for dirtwork will be accepted.
- All excess excavation shall remain on-site and shall be stockpiled or spread at a location determined by the Engineer.
- All existing and proposed erosion control measures including silt fencing, erosion control mat, straw bales, inlet barriers, and const. entrance shall be maintained throughout construction by the Contractor and until project is accepted by the City of Wichita. The on-site Engineer shall complete weekly reports on the status of erosion control measures. The Contractor shall be required to comply with maintenance and/or replacement of erosion control measures as determined by the on-site Engineer until project is accepted by City of Wichita. Maintenance and/or replacement of erosion control measures to be paid by L.S. bid item "Maintain Existing BMP's."
- A saw cut of at least one-half the depth of existing surface courses or one-fourth the depth of the existing total pavement thickness shall be provided at locations where proposed construction abuts the existing surface course or pavement for which partial removal of that surface or pavement is required. Sawed joint to facilitate removal within three (3) feet of existing joints will not be permitted and for such instances the limits of removal shall extend to the existing joint. Such saw cuts will not be paid for directly and this cost shall be considered as subsidiary to the removal of the surface or pavement.
- Limits of earthwork shall match existing ground elevations at the right-of-way line unless otherwise noted on the plans with a new finished grade elevation. When a new finished grade elevation is shown, the earthwork shall extend one foot beyond the right-of-way line and then slope up or down using permissible slopes to match the existing ground surface.
- Permanent seed all disturbed areas in the following locations: 47th St. S. R/W, West St. R/W, Res. "B", & Res. "D". These areas shall be seeded, mulched, and fertilized as follows (Permanent Seeding). All other areas that are disturbed shall be temporary seeded:
 Seed: Kansas Premium Fescue Blend: 8 lbs./1000 sq. ft.
 Mulch: Prairie Hay: 2 tons/acre
 Fertilizer: 12-24-12: 850 lbs./acre
 All costs associated with seeding, mulching, and fertilizing shall be included in bid item "Seeding." All seeding operations shall conform to City of Wichita Standard Specifications.
- The developer for this project is Mike Brand (316)942-2306

Scale: 1" = 150'

Benefit District: 
 Proposed Streets: 



EARTH WORK TOTALS	(UNADJUSTED)		
	Excavation	Compacted Fill	Loose Fill
Street R/W's	1996	123	1379
Easements	240	0	3010
Total	2236	123	4389

TOTAL PROJECT LENGTH
 2,475.43 L.F. = 0.47 Miles

* Cost of Easement Grading Loose Fill (Contractor Borrow) to be subsidiary to Bid Item "Easement Grading."



Baughman Company, P.A. 315 Ellis St. Wichita, KS 67211 P 316-262-2271 F 316-262-0149
 ENGINEERING | SURVEYING | PLANNING | LANDSCAPE ARCHITECTURE