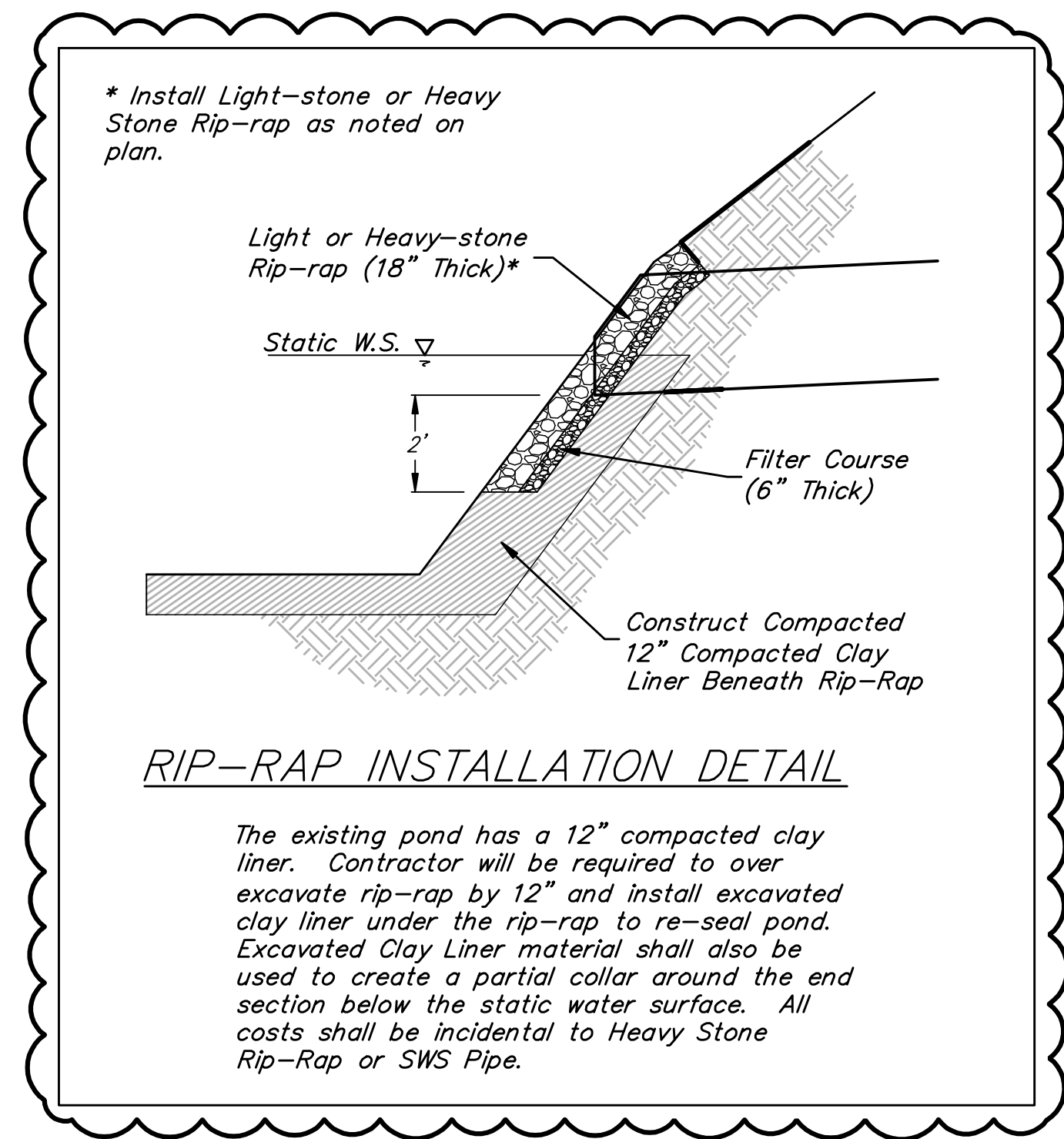
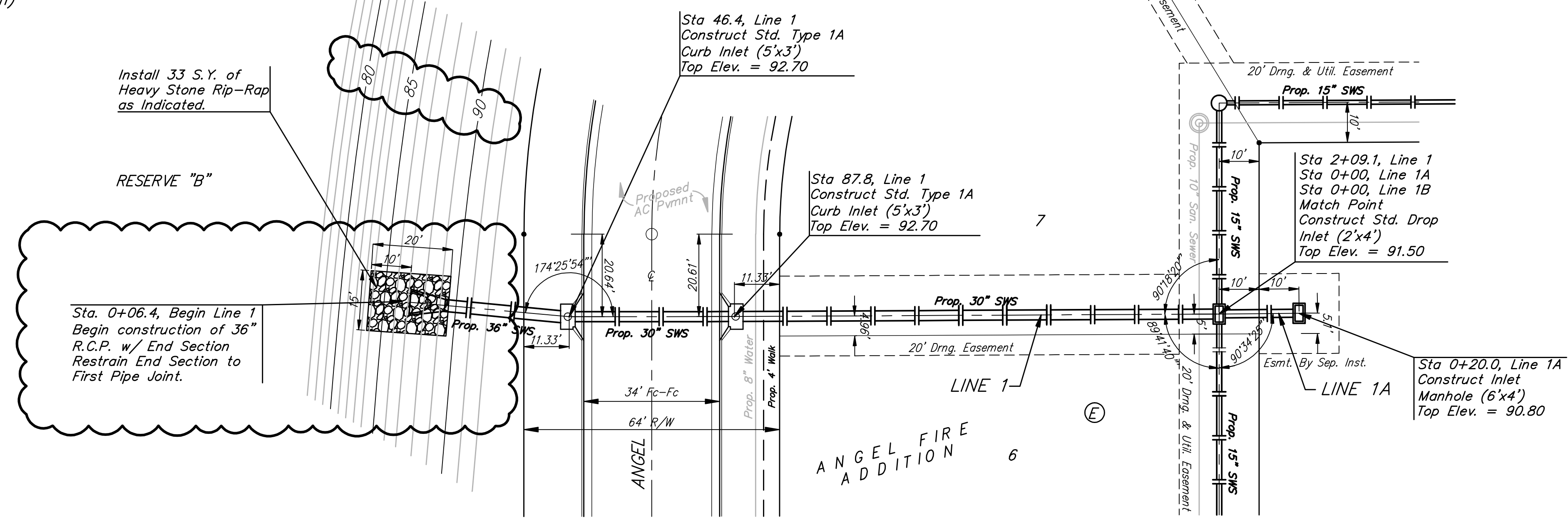
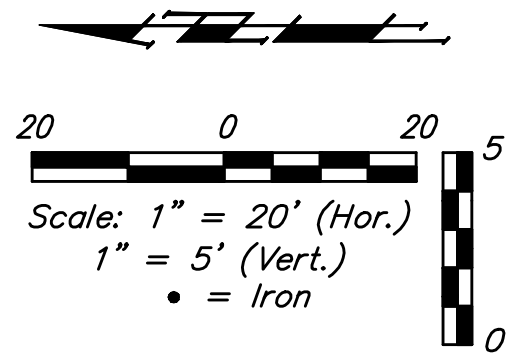


BENCHMARKS:
 C.O.W. Disc SE Corner West St. &
 47th S.
 Elev. = 92.29 (City Datum)

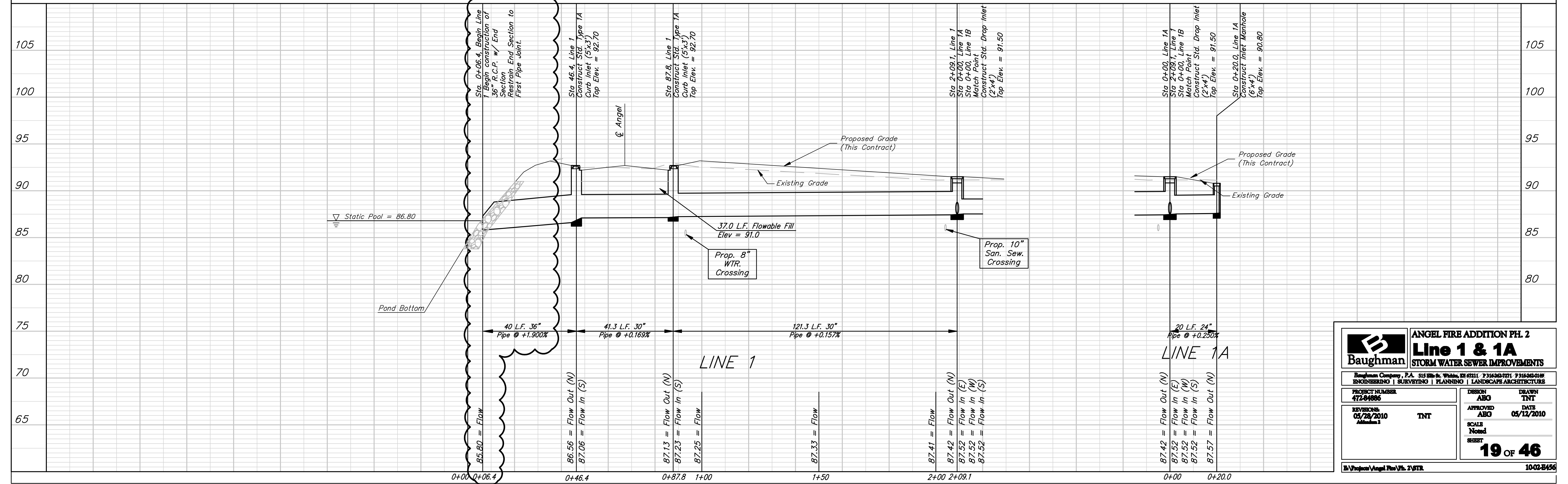
RR Spike in N. face of power pole,
 SE Corner 47th So. & Kessler
 Elev. = 91.74 (City Datum)

"□" Cut in Top of Curb Adjacent
 to the NW Corner Lot 27, Block C.
 Elev. = 93.57 (City Datum)



RIP-RAP INSTALLATION DETAIL

The existing pond has a 12" compacted clay liner. Contractor will be required to over excavate rip-rap by 12" and install excavated clay liner under the rip-rap to re-seal pond. Excavated Clay Liner material shall also be used to create a partial collar around the end section below the static water surface. All costs shall be incidental to Heavy Stone Rip-Rap or SWS Pipe.



		ANGEL FIRE ADDITION PH. 2 Line 1 & 1A STORM WATER SEWER IMPROVEMENTS	
		<small>Baughman Company, P.A. 315 9th St. W. Suite 103 07211 P 3163607271 F 3163607199 ENGINEERING SURVEYING PLANNING LANDSCAPE ARCHITECTURE</small>	
<small>PROJECT NUMBER</small> 472-84886	<small>DESIGN</small> ABG	<small>DRAWN</small> TNT	<small>APPROVED</small> ABG
<small>REVISIONS</small> 05/28/2010 <small>Modifications</small>	<small>DATE</small> 05/12/2010	<small>SCALE</small> Noted	<small>DATE</small> 05/12/2010
<small>REVISIONS</small> 05/28/2010 <small>Modifications</small>	<small>DATE</small> 05/12/2010	<small>SCALE</small> Noted	<small>DATE</small> 05/12/2010
<small>PROJECT VERTICAL FILE NO.</small> 24578			19 OF 46
<small>PROJECT VERTICAL FILE NO.</small> 24578			1002-8456