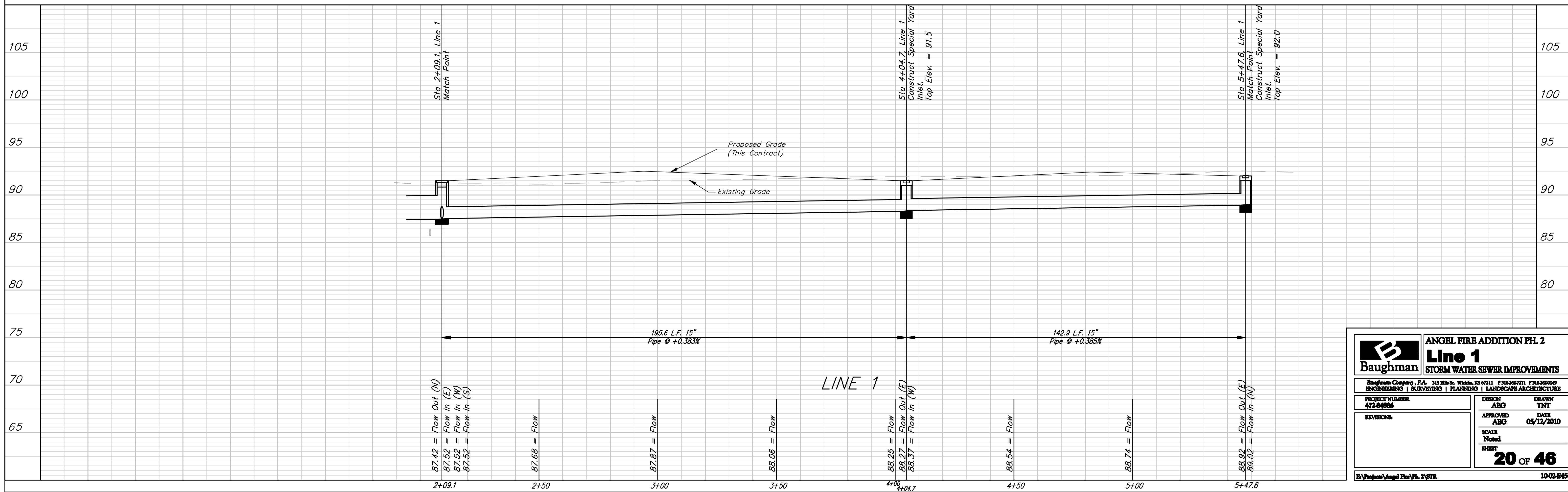
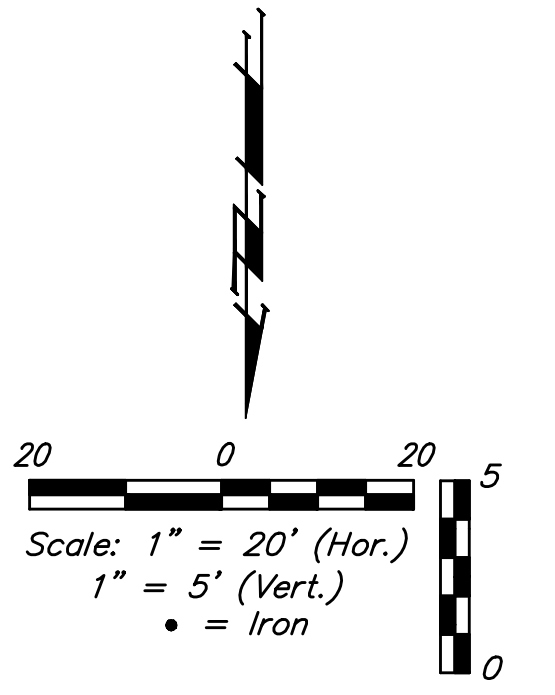
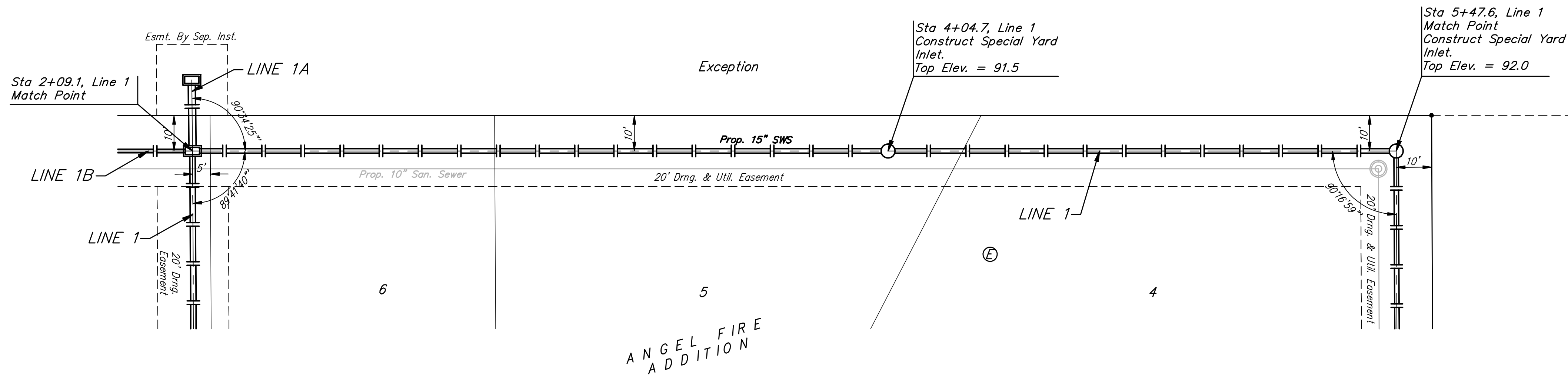


**BENCHMARKS:**  
 C.O.W. Disc SE Corner West St. & 47th S.  
 Elev. = 92.29 (City Datum)  
 RR Spike in N. face of power pole, SE Corner 47th So. & Kessler  
 Elev. = 91.74 (City Datum)  
 "□" Cut in Top of Curb Adjacent to the NW Corner Lot 27, Block C.  
 Elev. = 93.57 (City Datum)



		<b>ANGEL FIRE ADDITION PH. 2</b> <b>Line 1</b> <b>STORM WATER SEWER IMPROVEMENTS</b>	
		<small>Baughman Company, P.A., 315 9th St. W., Minneapolis, MN 55412   P: 612.338.2721   F: 612.338.2722</small>	
<b>PROJECT NUMBER</b> 472-0406	<b>DESIGN</b> ABG	<b>DATE</b> TMT	<b>APPROVED</b> ABG
<b>REVISIONS</b>	<b>SCALE</b> Noted	<b>DATE</b> 05/12/2010	<b>DATE</b> 05/12/2010
		<b>20 OF 46</b>	
<small>Project: Angel Fire Ph. 2 2/07R</small>		<small>10-02-B456</small>	