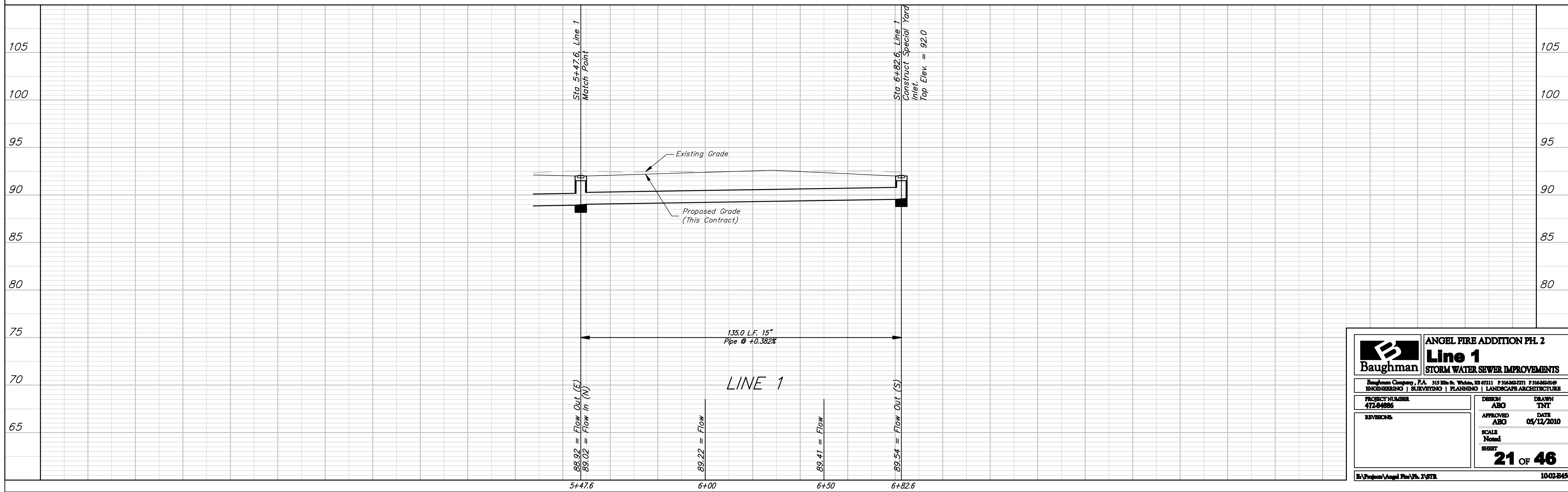
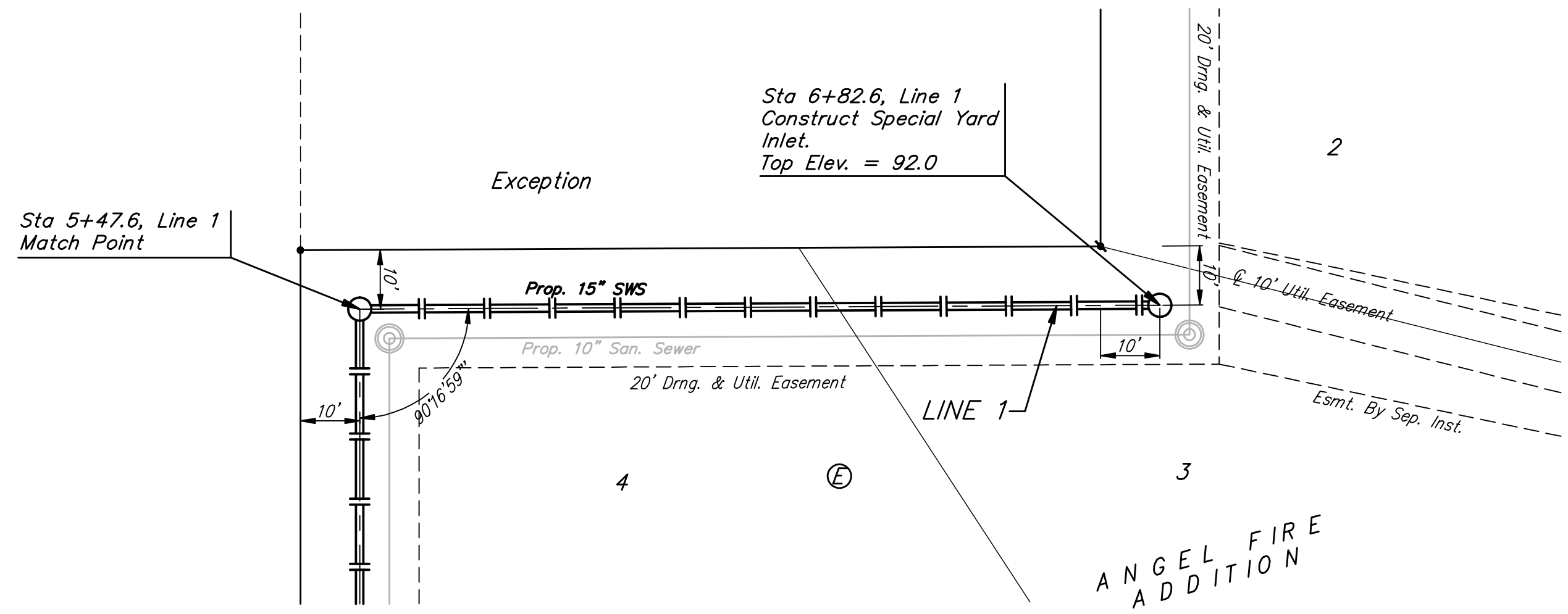
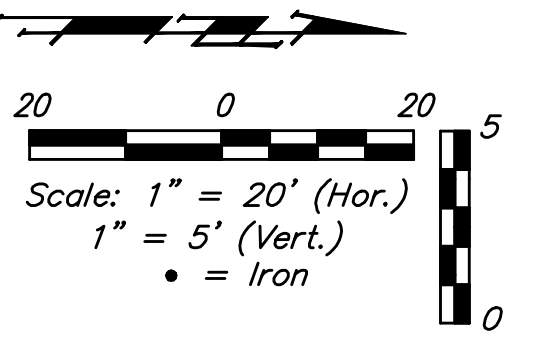


BENCHMARKS:
 C.O.W. Disc SE Corner West St. & 47th S.
 Elev. = 92.29 (City Datum)
 RR Spike in N. face of power pole, SE Corner 47th So. & Kessler
 Elev. = 91.74 (City Datum)
 "□" Cut in Top of Curb Adjacent to the NW Corner Lot 27, Block C.
 Elev. = 93.57 (City Datum)



		ANGEL FIRE ADDITION PH. 2 Line 1 STORM WATER SEWER IMPROVEMENTS	
		<small>Baughman Company, P.A. 315 9th St. W. Minn. 55 67111 P 316.883.7271 F 316.883.0149 ENGINEERING SURVEYING PLANNING LANDSCAPE ARCHITECTURE</small>	
PROJECT NUMBER 472-0-006	DESIGN ABG	DRAWN TNT	DATE 05/12/2010
REVISIONS	APPROVED ABG	SCALE Noted	SHEET 21 OF 46
<small>Project: Angel Fire Ph. 2 2/07R</small>			<small>10-02-0456</small>