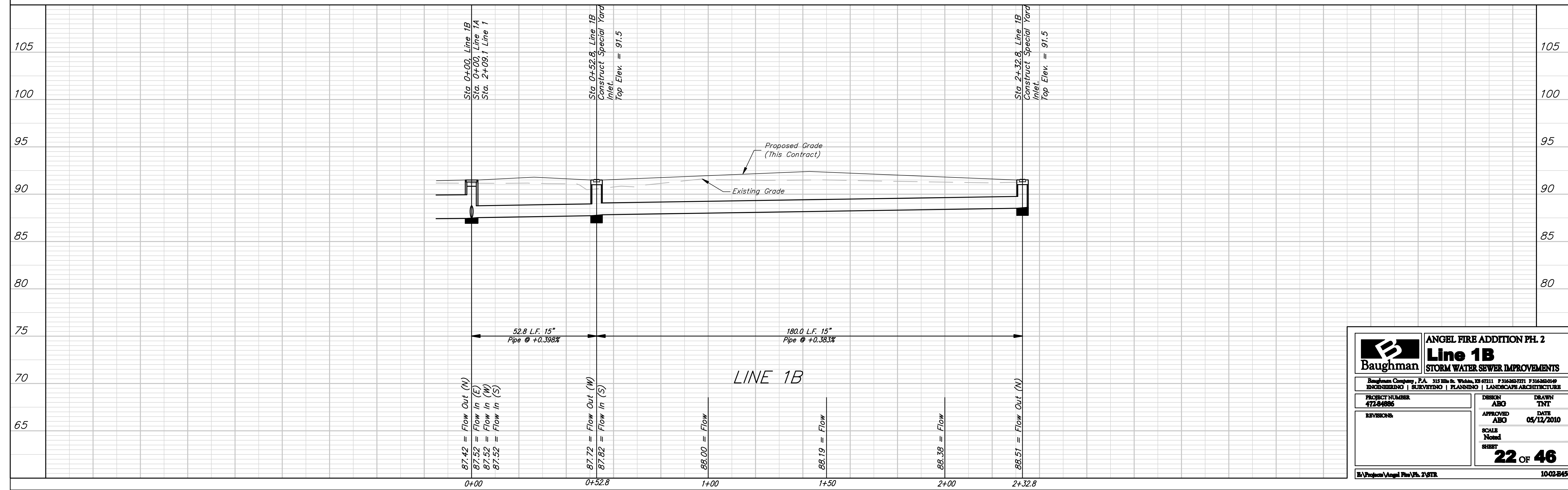
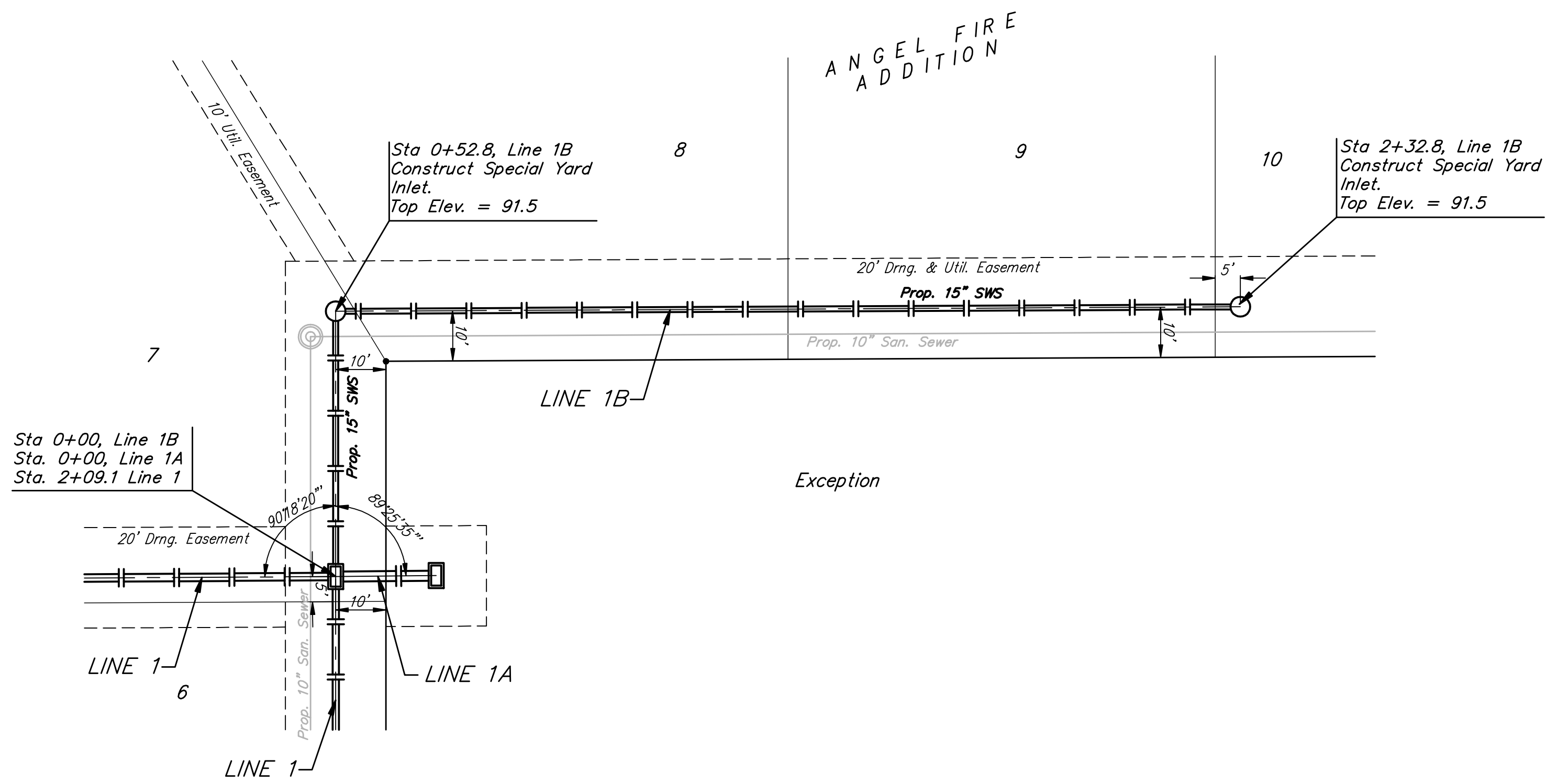
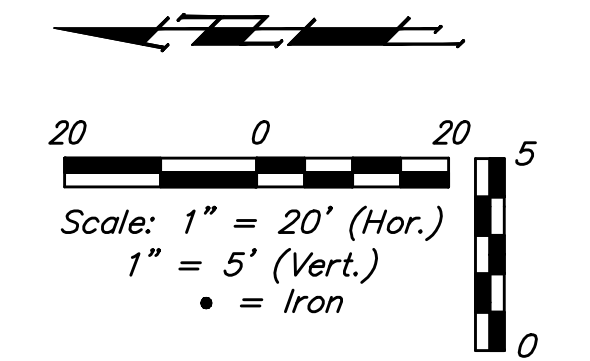


**BENCHMARKS:**  
 C.O.W. Disc SE Corner West St. & 47th S.  
 Elev. = 92.29 (City Datum)  
 RR Spike in N. face of power pole, SE Corner 47th So. & Kessler  
 Elev. = 91.74 (City Datum)  
 "□" Cut in Top of Curb Adjacent to the NW Corner Lot 27, Block C.  
 Elev. = 93.57 (City Datum)



		<b>ANGEL FIRE ADDITION PH. 2</b> <b>Line 1B</b> <b>STORM WATER SEWER IMPROVEMENTS</b>	
		<small>Baughman Company, P.A. 315 2nd St. W. Suite 100, St. Petersburg, FL 33713 P: 727.343.7771 F: 727.343.7772</small>	
<b>PROJECT NUMBER</b> 472-0-006	<b>DESIGN</b> ABG	<b>DRAWN</b> TNT	<b>DATE</b> 05/12/2010
<b>REVISIONS</b>	<b>APPROVED</b> ABG	<b>SCALE</b> Noted	<b>SHEET</b> <b>22 OF 46</b>
<small>Project: Angel Fire Ph. 2 2/07R</small>			<small>10-02-B456</small>