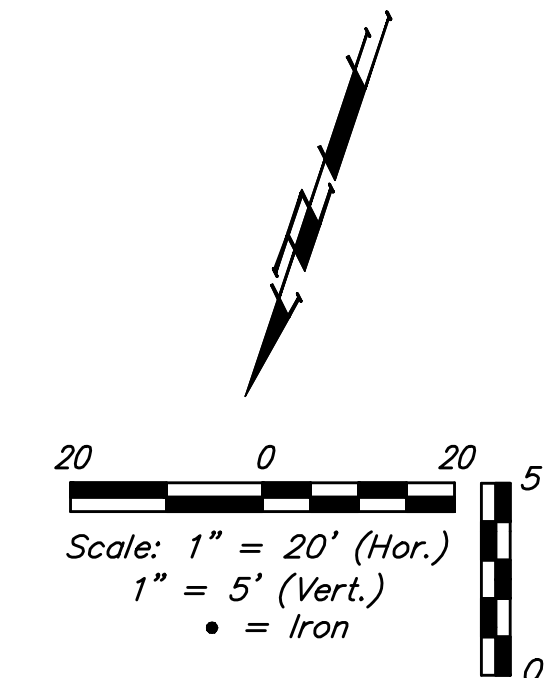
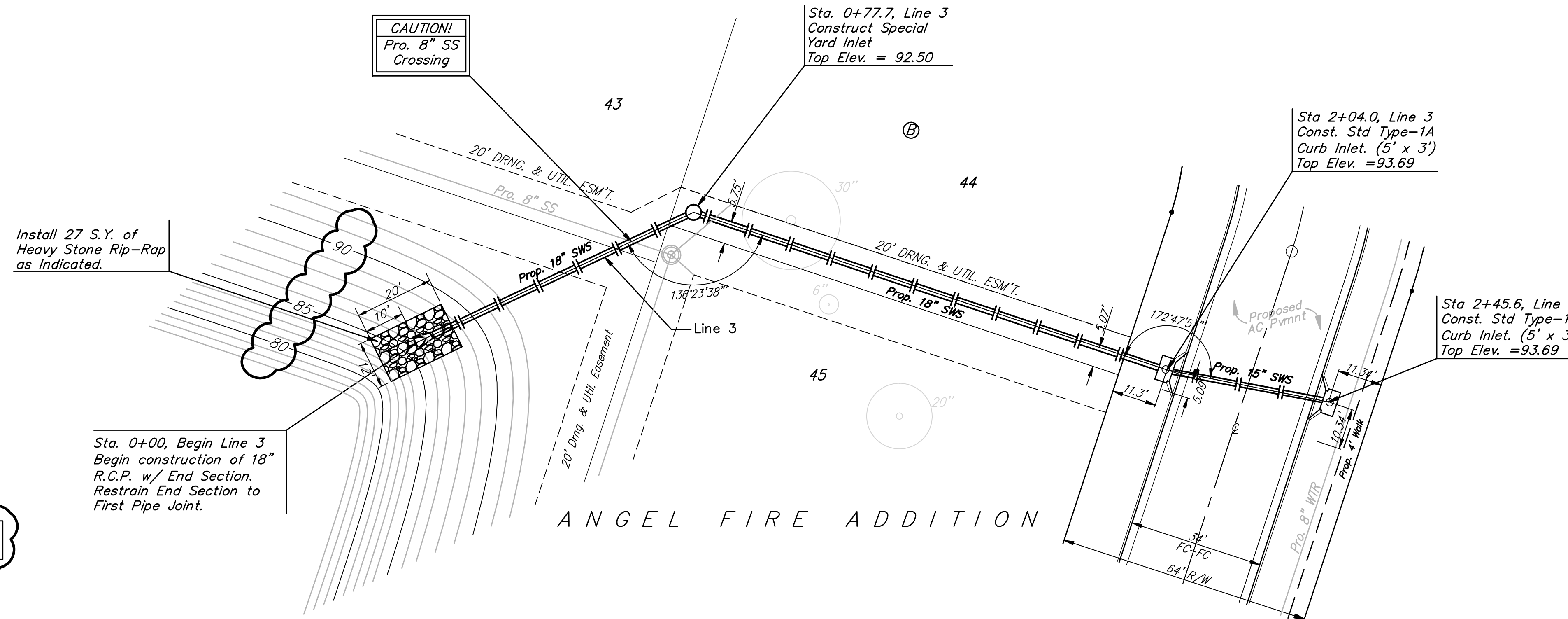


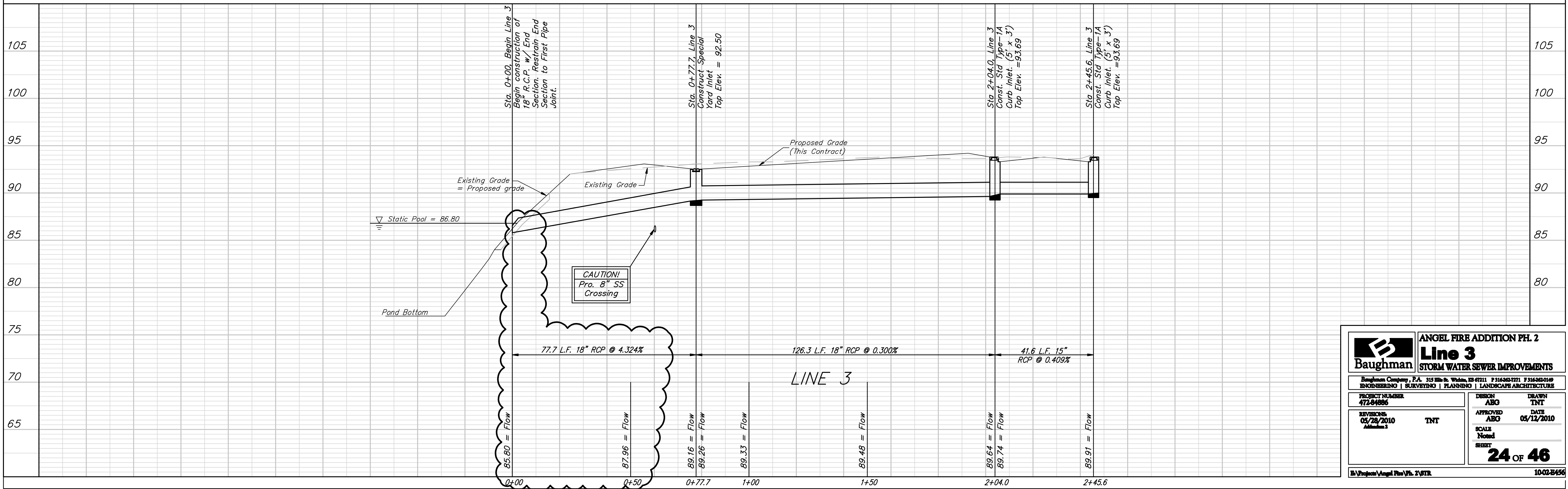
BENCHMARKS:
 C.O.W. Disc SE Corner West St. &
 47th S.
 Elev. = 92.29 (City Datum)

RR Spike in N. face of power pole,
 SE Corner 47th So. & Kessler
 Elev. = 91.74 (City Datum)

"□" Cut in Top of Curb Adjacent
 to the NW Corner Lot 27, Block C.
 Elev. = 93.57 (City Datum)



See Sheet 19 for
 Rip-Rap Detail



Baughman		ANGEL FIRE ADDITION PH. 2	
		Line 3	
		STORM WATER SEWER IMPROVEMENTS	
Baughman Company, P.A. 515 Billie St. Wichita, KS 67211 P 316-962-7271 F 316-962-0149			
ENGINEERING SURVEYING PLANNING LANDSCAPE ARCHITECTURE			
PROJECT NUMBER 472-84886	DESIGN ABO	DRAWN TNT	
REVISIONS: 05/28/2010 Addendum 1	TNT	APPROVED ABO	DATE 05/12/2010
		SCALE Noted	
		24 OF 46	
		Project: Angel Fire Ph. 2 WTR	
		1002-8456	