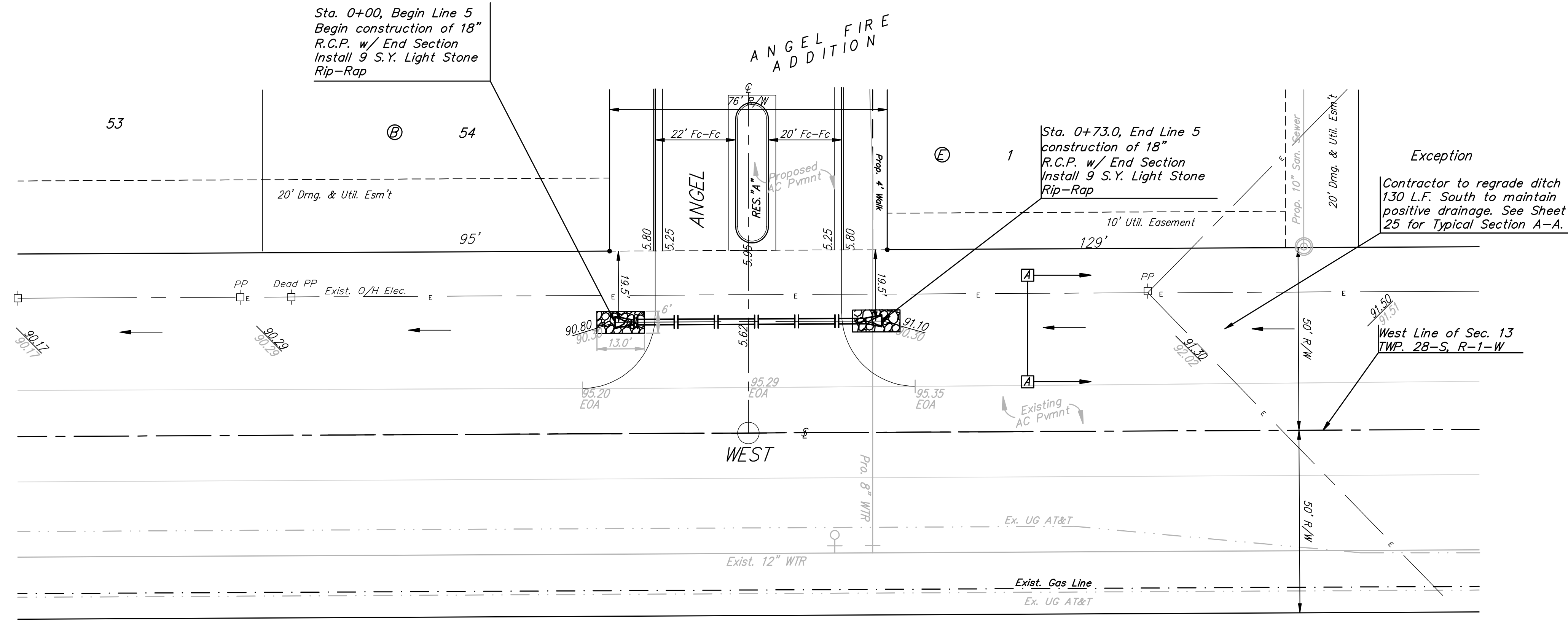
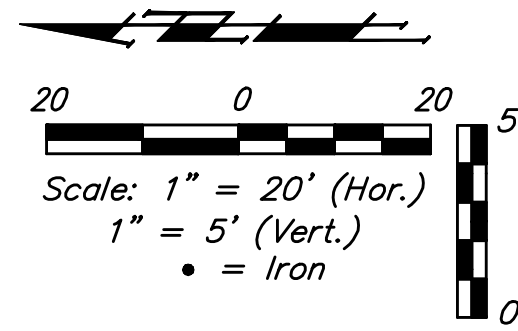


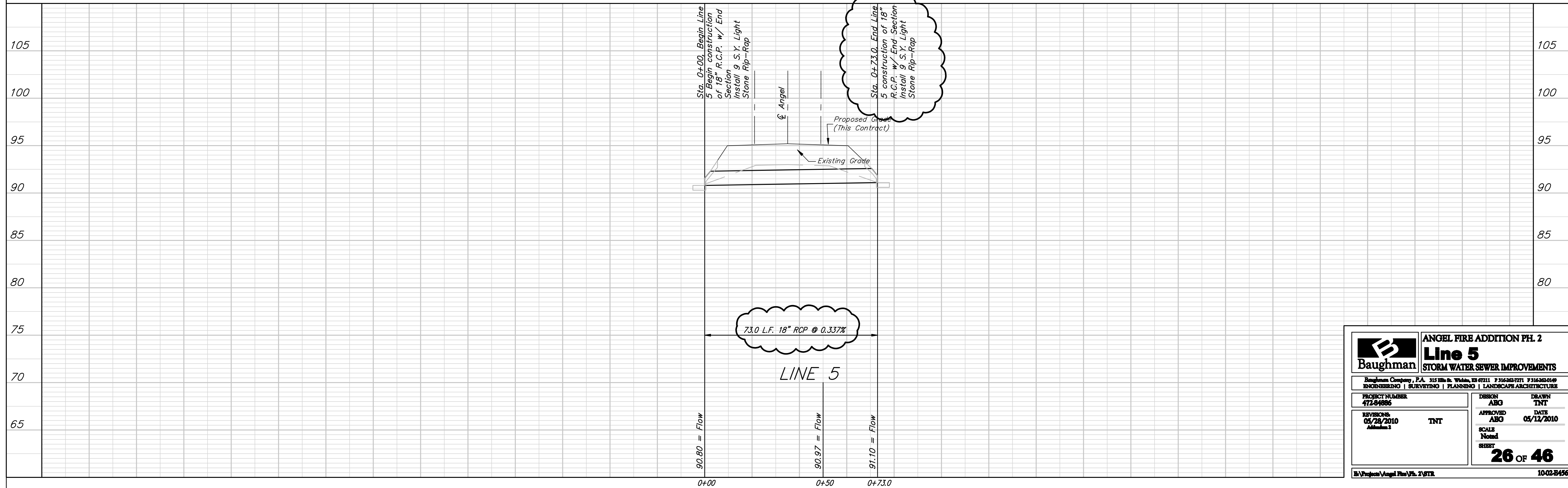
BENCHMARKS:
 C.O.W. Disc SE Corner West St. &
 47th S.
 Elev. = 92.29 (City Datum)

RR Spike in N. face of power pole,
 SE Corner 47th So. & Kessler
 Elev. = 91.74 (City Datum)

"□" Cut in Top of Curb Adjacent
 to the NW Corner Lot 27, Block C.
 Elev. = 93.57 (City Datum)



Ditch Grade Labels
 Proposed Grade
 Existing Grade



Baughman		ANGEL FIRE ADDITION PH. 2	
		Line 5	
		STORM WATER SEWER IMPROVEMENTS	
Baughman Company, P.A. 315 1/2 St. W. Tallahassee, FL 32302-7771 P 904-202-7771 F 904-202-0169			
ENGINEERING SURVEYING PLANNING LANDSCAPE ARCHITECTURE			
PROJECT NUMBER 472-04886	DESIGN ABG	DRAWN TNT	
REVISIONS: 05/28/2010 Addition 3	TNT	APPROVED ABG	DATE 05/12/2010
		SCALE Noted	
		26 OF 46	
		SHEET	
		1002-8456	