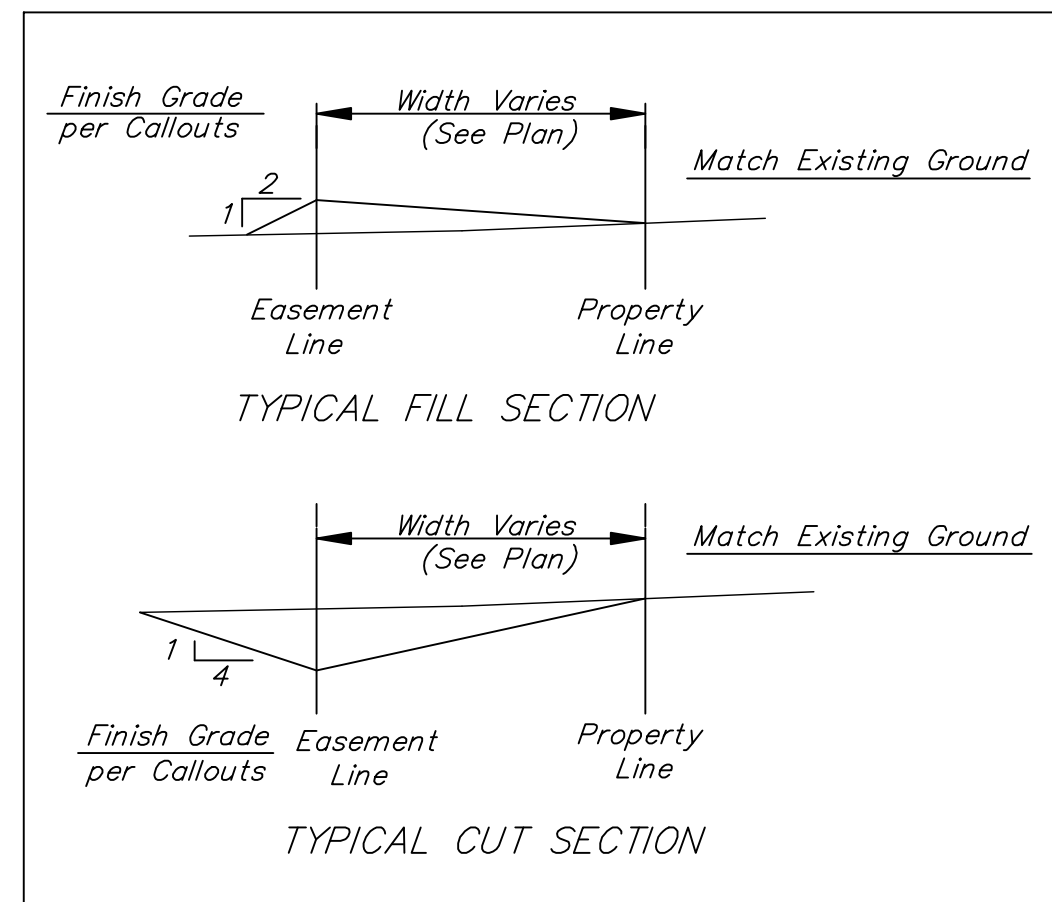
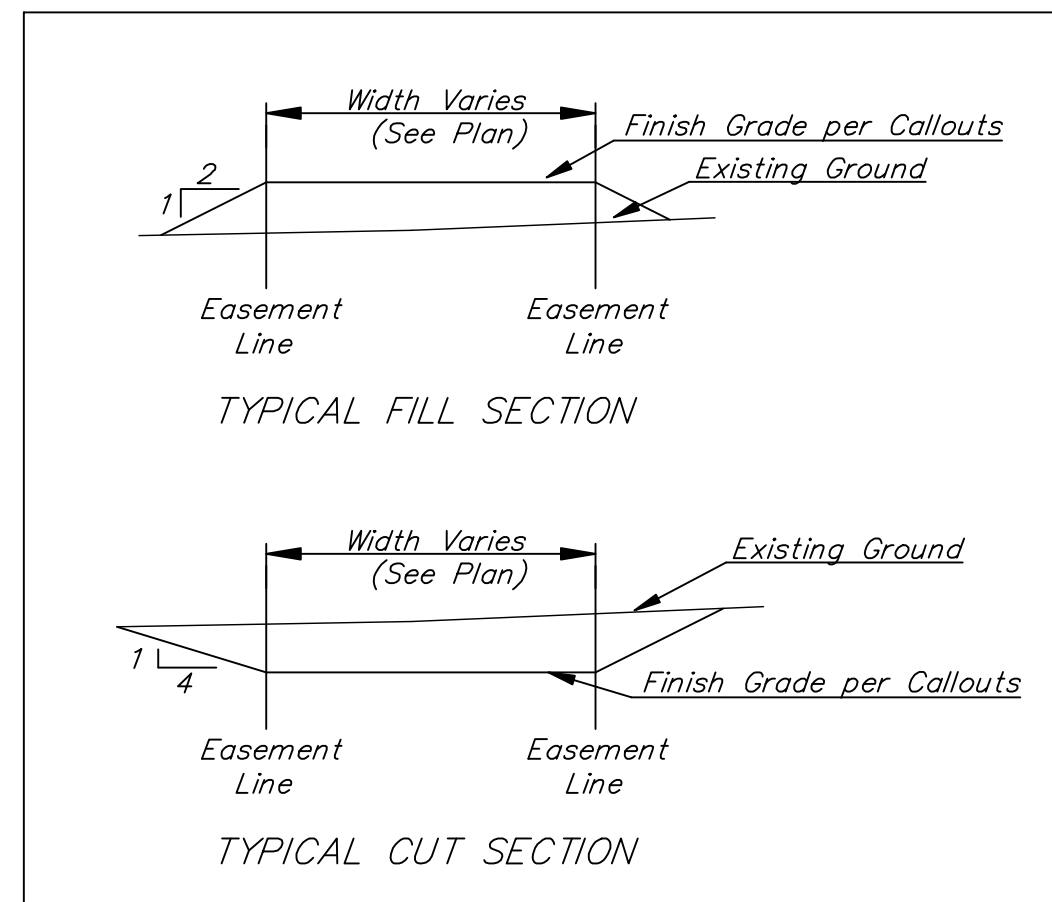


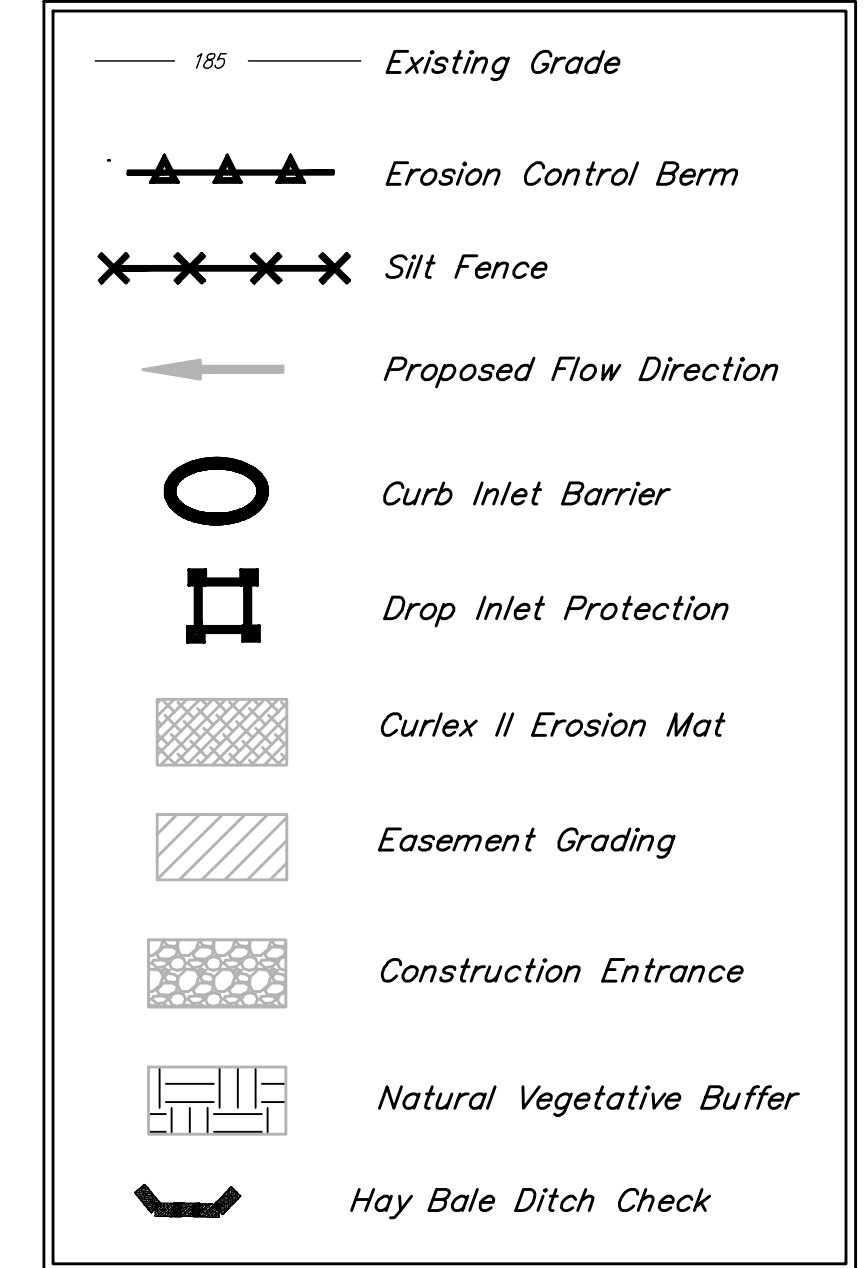
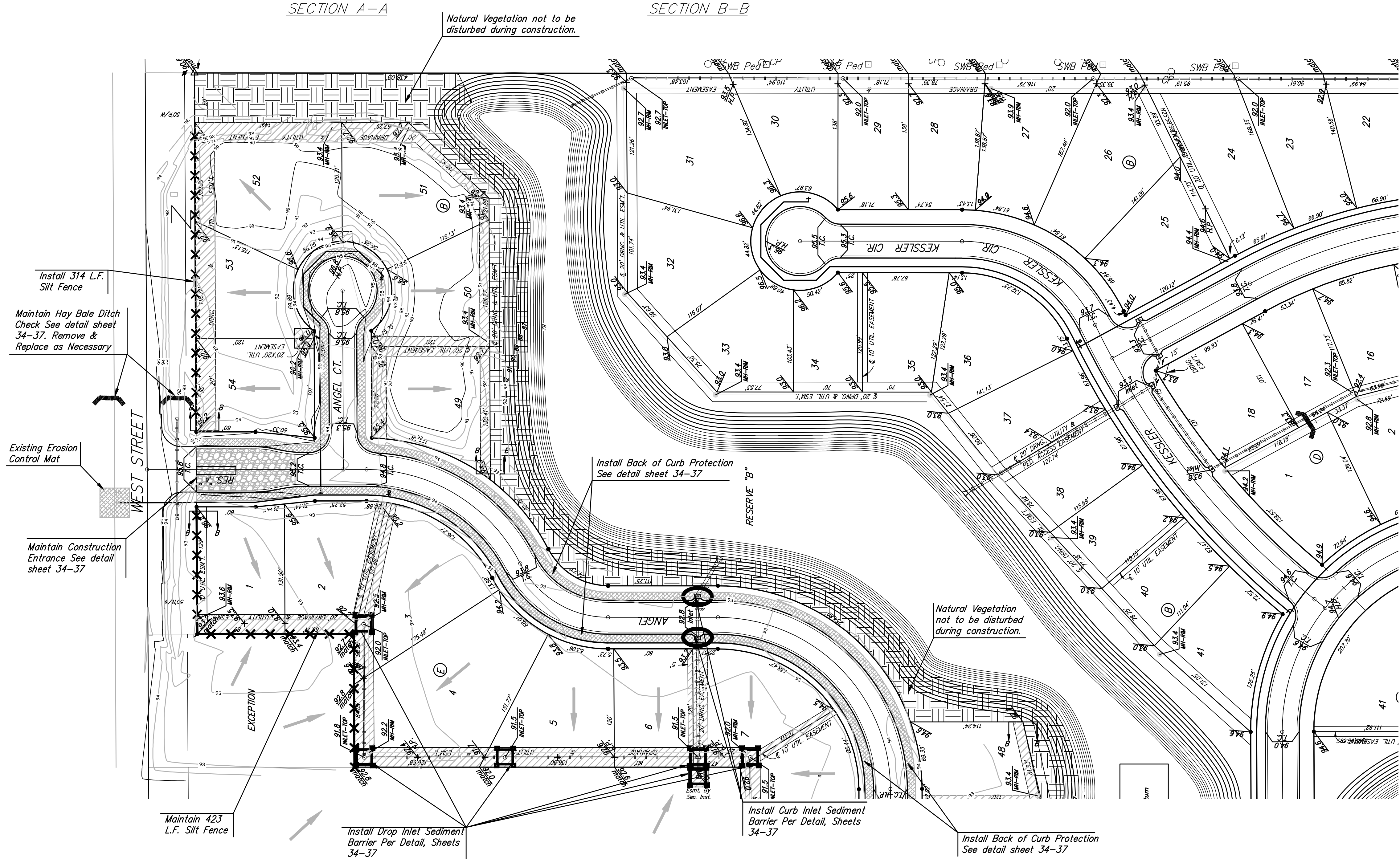
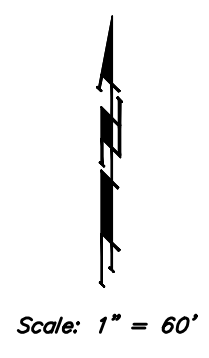
BENCHMARKS:
 C.O.W. Disc SE Corner West St. & 47th S.
 Elev. = 92.29 (City Datum)

RR Spike in N. face of power pole, SE Corner 47th So. & Kessler
 Elev. = 91.74 (City Datum)

"□" Cut in Top of Curb Adjacent to the NW Corner Lot 27, Block C.
 Elev. = 93.57 (City Datum)



The contractor shall fill and grade the easements as shown to the elevations given on the easement grading plan. All easement grading costs including contractor furnished import material shall be incidental to the Easement Grading Bid Item. The contractor shall 'straight' grade the easements between the elevations given. Where a callout designates 'Match', the contractor will grade to the existing ground elevation.



See Sheet 33 for Quantities

		ANGEL FIRE ADDITION PH. 2 EASEMENT GRADING & EROSION CONTROL PLAN Street/SWS Improvements	
		<small>Baughman Company, P.A. 315 9th St. W. Suite 207 67211 P 316282-7271 F 316282-0149 ENGINEERING SURVEYING PLANNING LANDSCAPE ARCHITECTURE</small>	
PROJECT NUMBER 472-04886	DESIGN AEG	DRAWN TNT	
REVISIONS	APPROVED AEG	DATE 05/12/2010	
		SCALE NOTED	
		SHEET 32 OF 46	