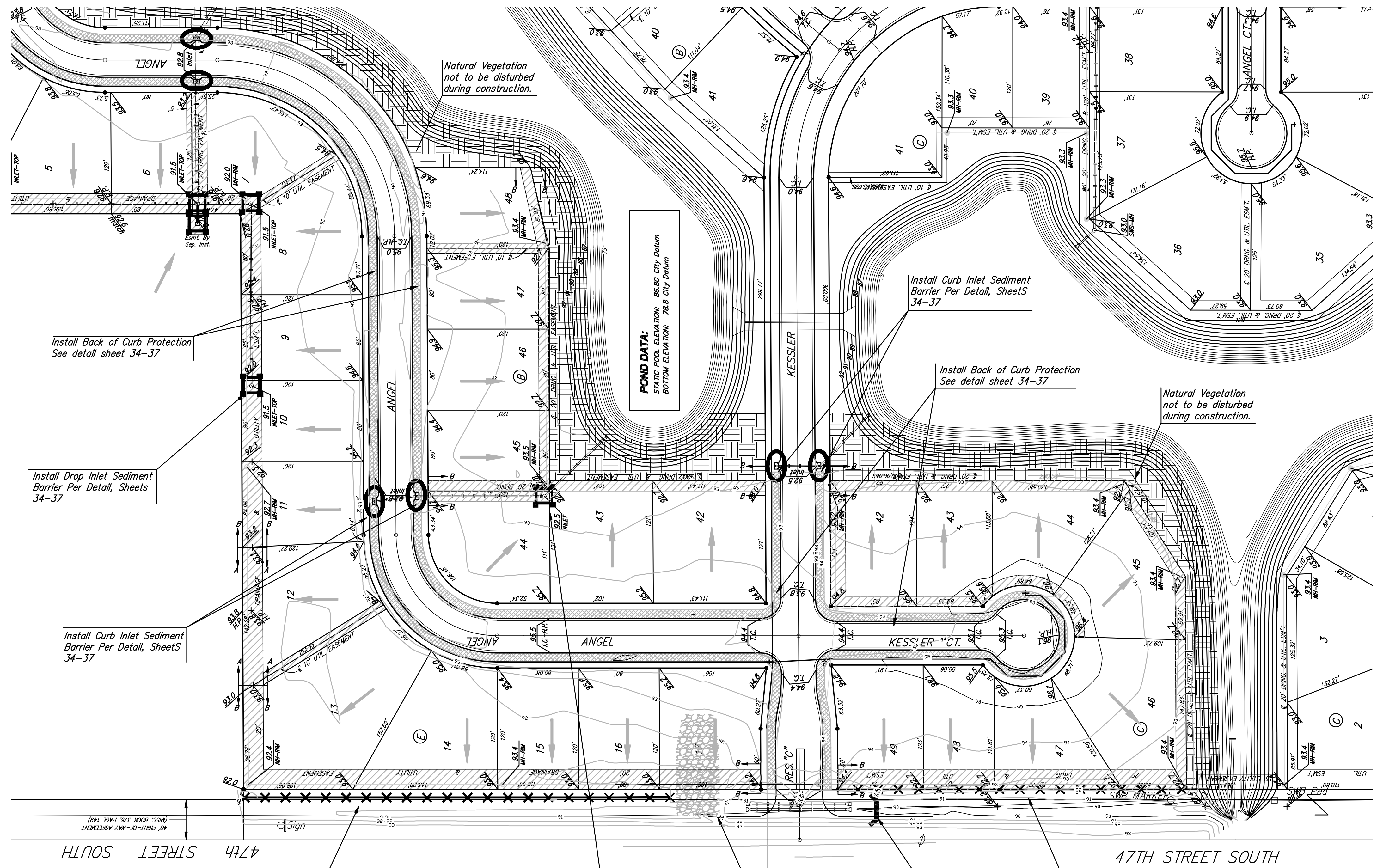
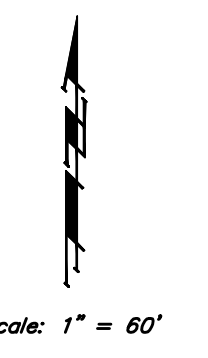


BENCHMARKS:
 C.O.W. Disc SE Corner West St. & 47th S.
 Elev. = 92.29 (City Datum)

RR Spike in N. face of power pole, SE Corner 47th So. & Kessler
 Elev. = 91.74 (City Datum)

"□" Cut in Top of Curb Adjacent to the NW Corner Lot 27, Block C.
 Elev. = 93.57 (City Datum)



Legend

- 185 — Existing Grade
- ▲▲▲▲ Erosion Control Berm
- ×××× Silt Fence
- Proposed Flow Direction
- Curb Inlet Barrier
- Drop Inlet Protection
- ▨ Curlex II Erosion Mat
- ▨ Easement Grading
- ▨ Construction Entrance
- ▨ Natural Vegetative Buffer

EROSION CONTROL MEASURE	UNITS	QUANTITY
Install Drop Inlet Barrier	Ea.	8
Install Curb Inlet Barrier	Ea.	6
Install Back of Curb Protection	L.F.	4,683
Install Silt Fence	L.F.	669

Quantities are For Information Only! Contractor shall verify quantities per final bid quantity sheet.

Easement Grading Quantities (Information only)		
Excavation (Cu. Yd.) Loose Fill (Cu. Yd.)		
Easement Grade	240	3,010

Install One Construction Entrance onto site per Details, Sheets 34-37

Baughman **ANGEL FIRE ADDITION PH. 2**
EROSION CONTROL PLAN
 Street/SWS Improvements

Baughman Company, P.A. 313 9th St. W. Suite 207 72111 P 313-893-7271 F 313-893-0149
 ENGINEERING | SURVEYING | PLANNING | LANDSCAPE ARCHITECTURE

PROJECT NUMBER 472-04886	DISCUSS AEG	DRAWN TNT
REVISIONS	APPROVED AEG	DATE 05/12/2010
SCALE NOTED		SHEET 33 OF 46

E:\Angel Fire\Erosion Control Plan.dwg 1002E456