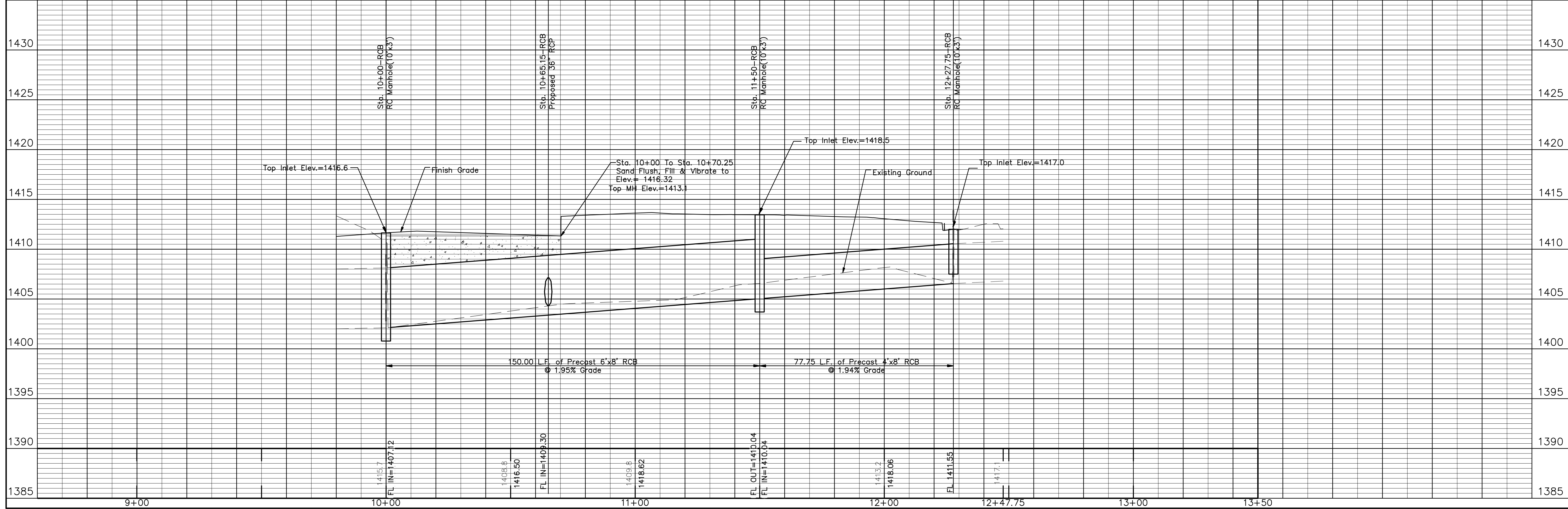


Grade To Daylight From  
 Proposed R/W Elev. To  
 Daylight @ Elev. 1417



MEDITERRANEAN PLAZA ADDITION  
 STREET IMPROVEMENTS  
 8'x6' RCB EXTENSION

CITY OF WICHITA, KANSAS  
 JAMES L. ARMOUR, P.E. - CITY ENGINEER  
 PROJECT NO. 472-84885 OCA NO. 786250

POE & ASSOCIATES, INC.  
 CONSULTING ENGINEERS  
 5940 E. Central, Suite 200 in Wichita, KS 67208-4242  
 Phone 316.666-4114 • FAX 316.666-4444

Engineer: T. AUSTIN  
 Designer: S. SCHMIDT  
 P.O. Job No.: 1949-00156  
 Date: MARCH 2010

Sheet 4 of 19