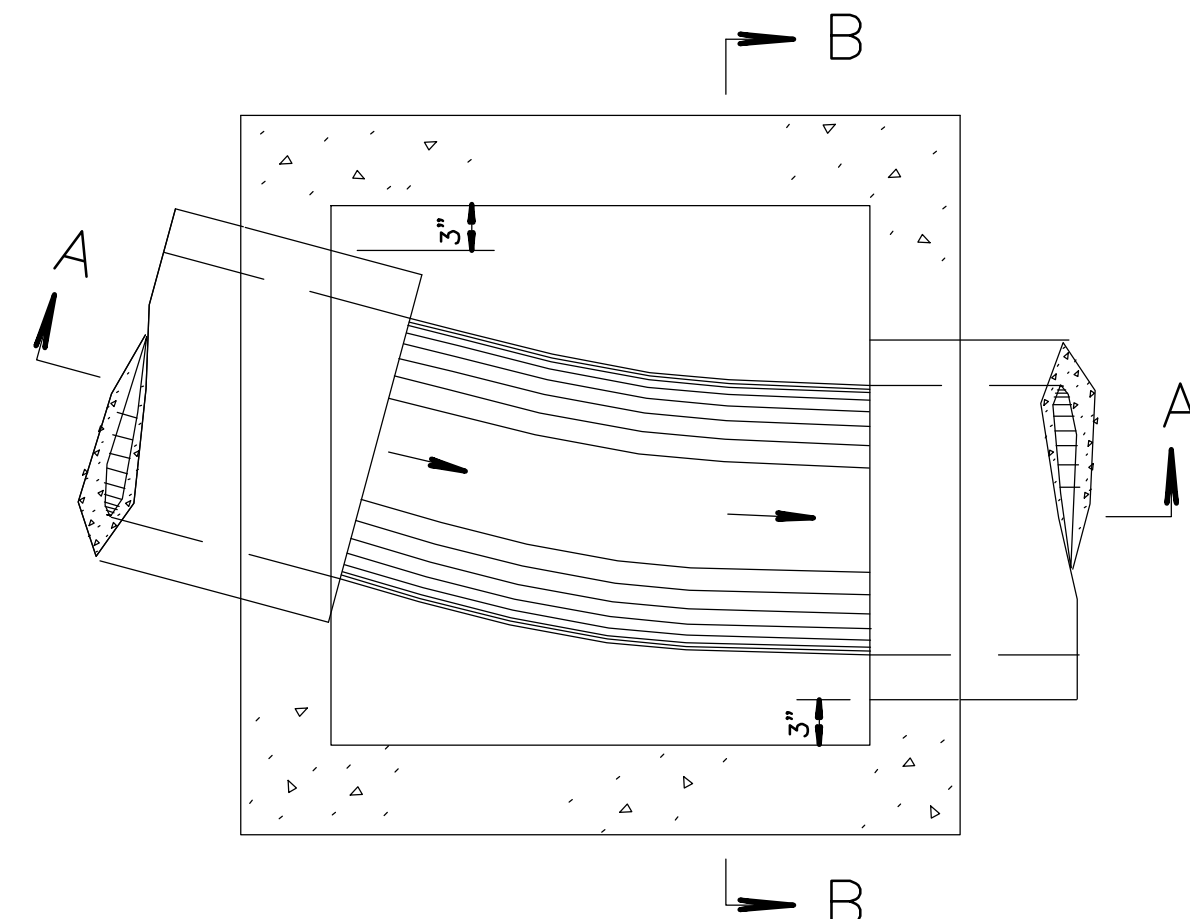
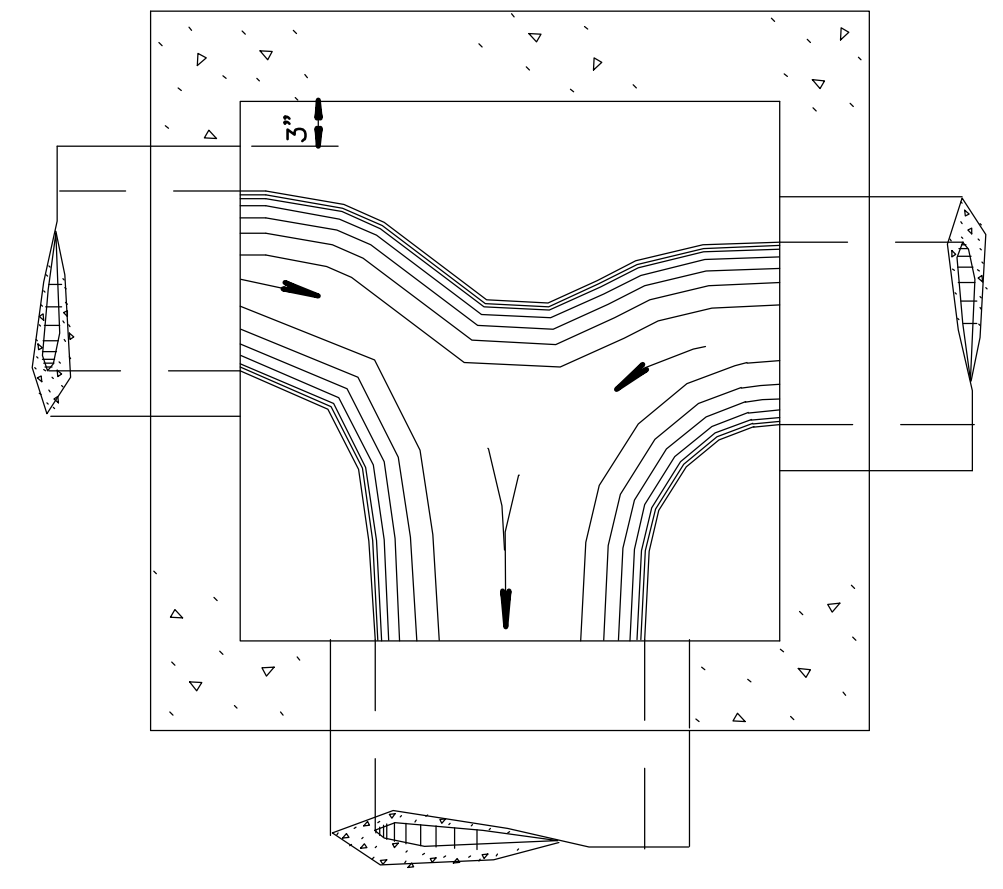


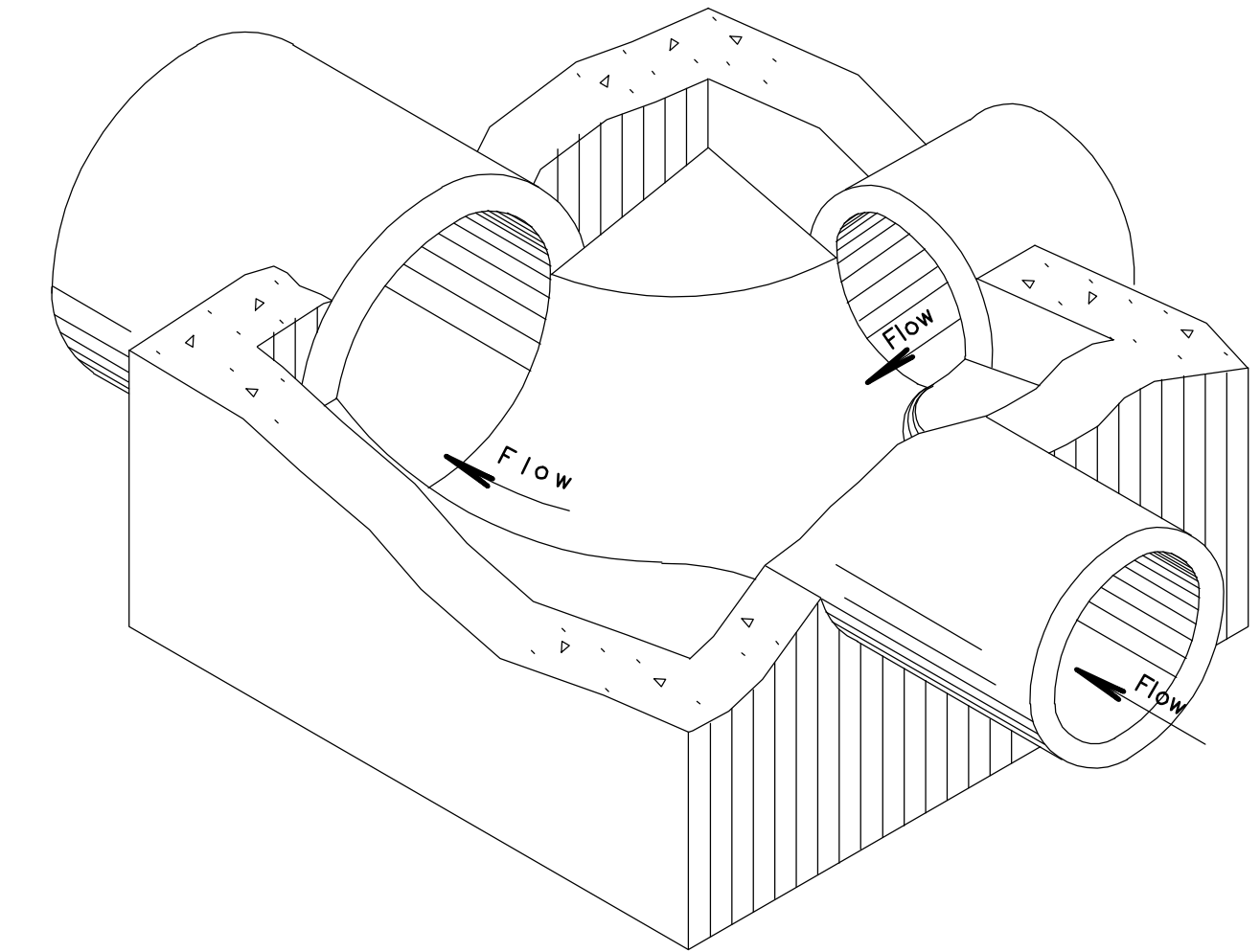
FHWA REGION NO.	STATE	PROJECT NO.	YEAR	SHEET NO.	TOTAL SHEETS
7	KANSAS	472-84885	2009	17	19



PLAN - FLOOR (Example I)

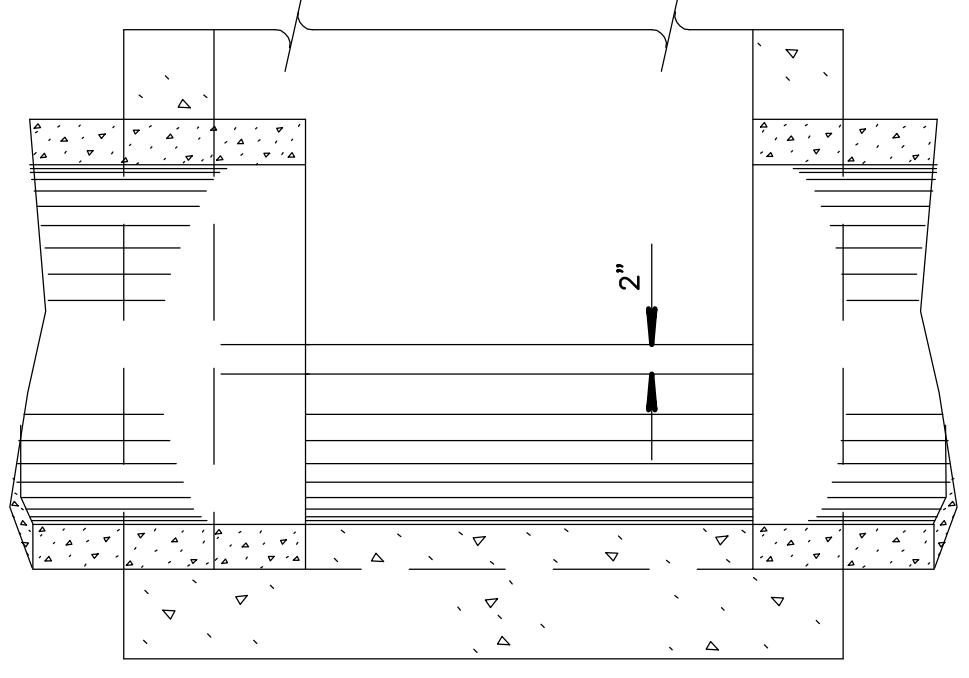


PLAN - FLOOR (Example III)

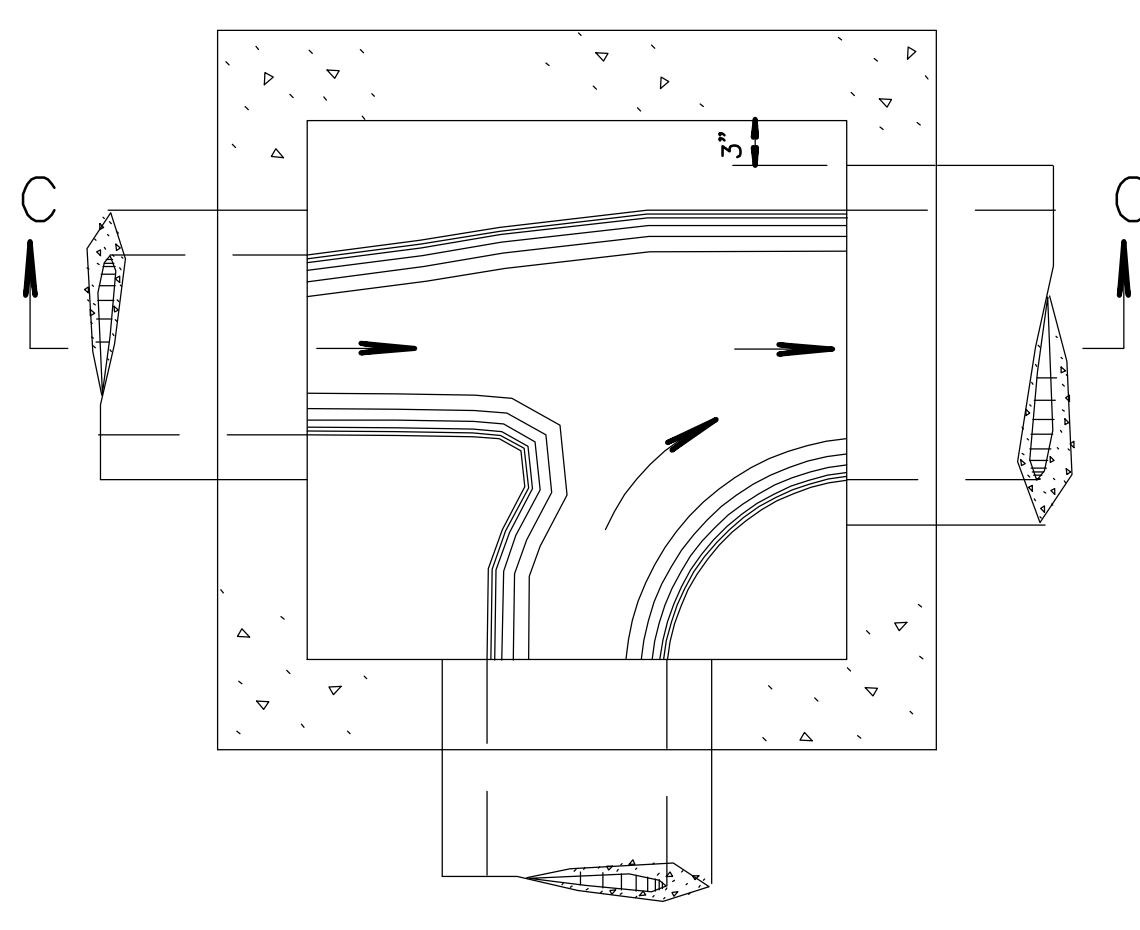


ISOMETRIC VIEW (Example IV)

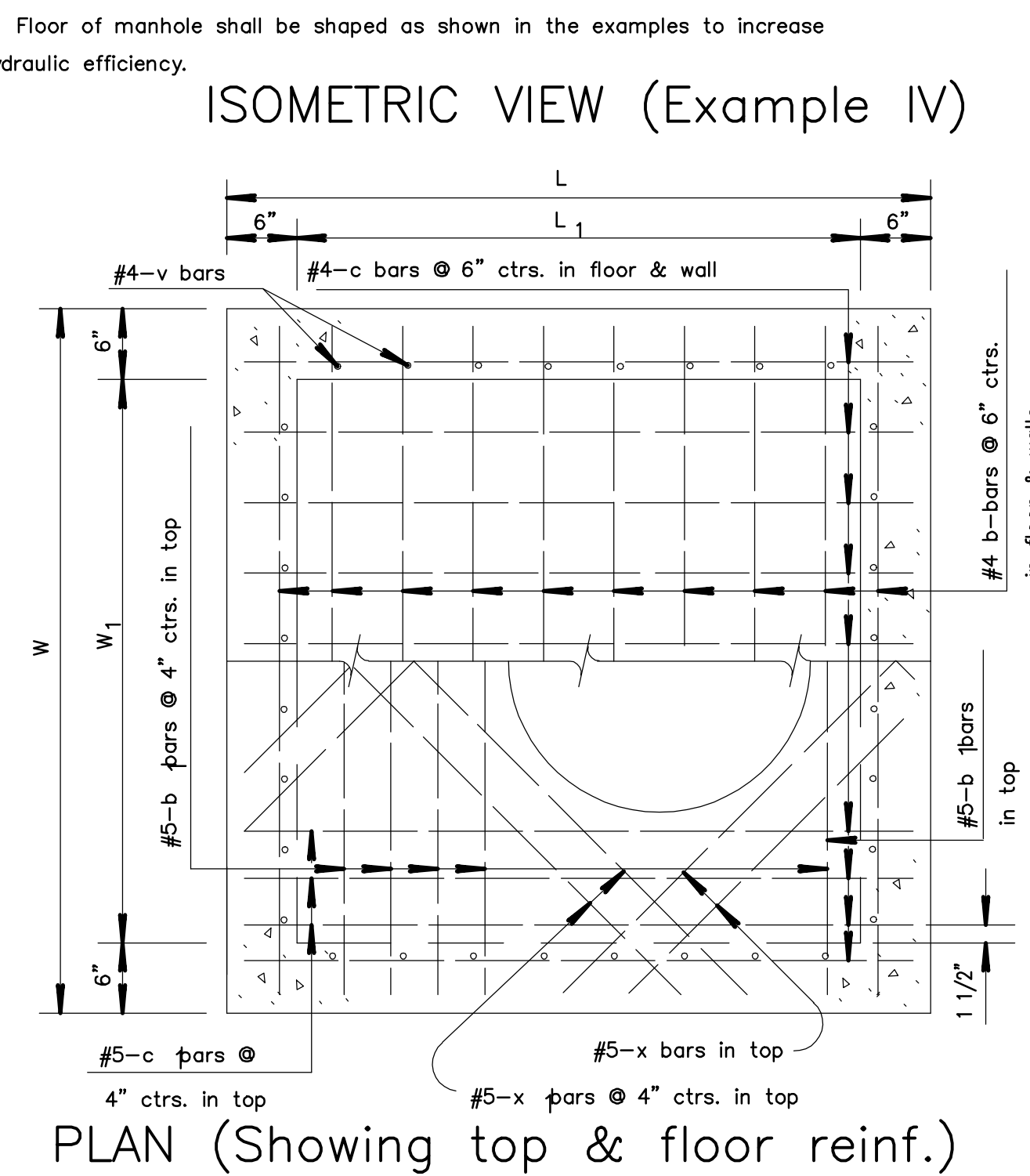
Note: Use Class A Concrete throughout. All exposed edges shall be finished with an edging tool.
 At the contractor's option Class A Concrete (AE) or mix used in concrete pavement may be used throughout.
 In general, pipes will enter and leave manhole at various positions. Where possible bend bars around pipes.
 Floor of manhole shall be shaped as shown in various "EXAMPLES" with unreinforced Class "A" Concrete.
 Manhole opening and steps, where used, shall be placed to afford easy access to top of shaped invert.
 Top reinforcing bars shall be adjusted accordingly.
 All castings shall be gray iron and shall comply with the KDOT Standard Specifications.
 No deductions in concrete quantities shall be made for pipe openings or additions to concrete quantities shall be made for shaping floor of manholes.
 The top of the manhole shall be sloped slightly to approximately fit the ground line or other condition as directed by the Engineer.
 Dimensions and weights of cast iron as shown on this sheet are minimum. Larger dimensions and/or heavier weights of cast iron may be used.
 The Contractor has the option of using precast manholes, as approved by the Engineer.
 Steps shall be installed in all manholes when specified in the plans or when "H" is equal to or greater than six feet. Steps shall comply with the requirements of the KDOT Standard Specification.



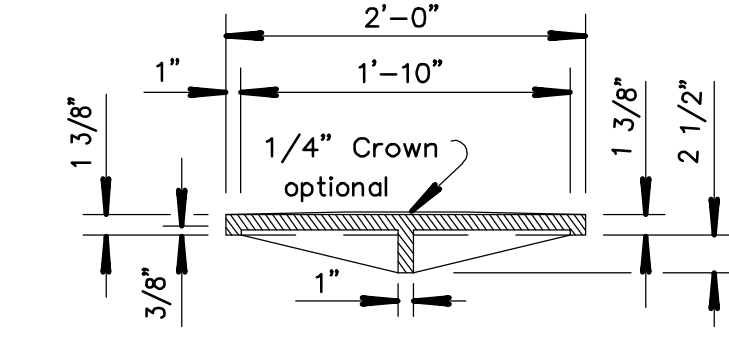
SECTION A-A (Example I)



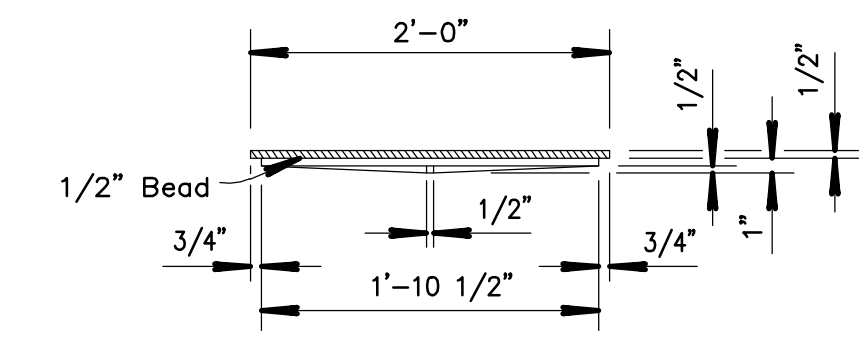
PLAN - FLOOR (Example IV)



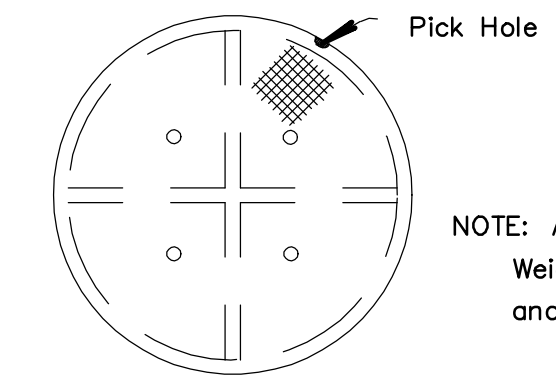
PLAN (Showing top & floor reinf.)



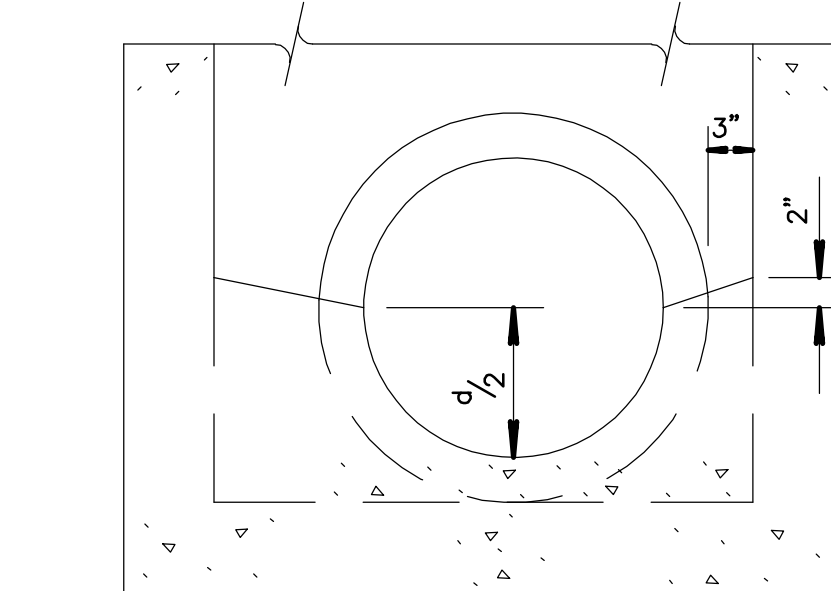
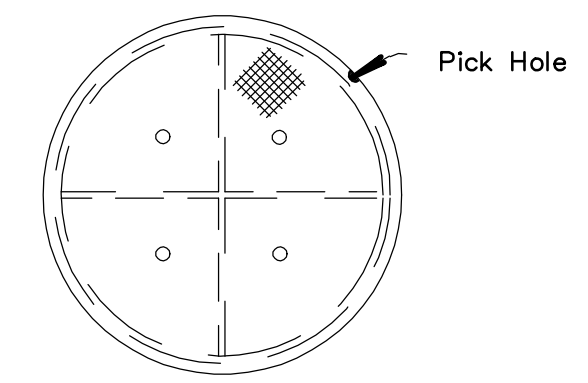
MANHOLE COVER TYPE A & B
(Weight=134 lbs.; without 1/4" Crown= 125 lbs.)



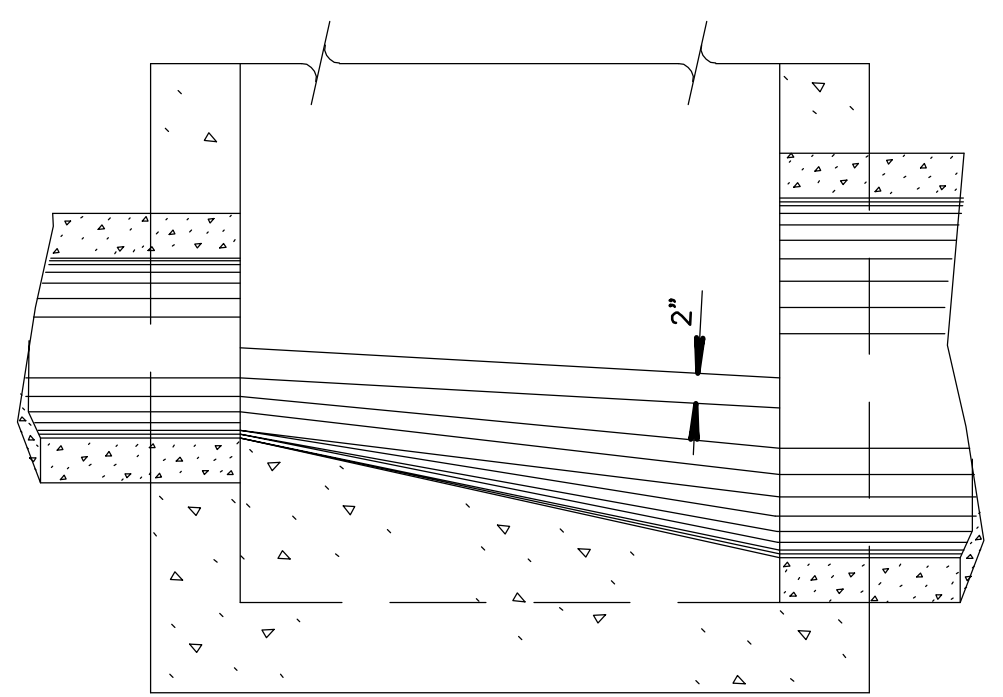
MANHOLE COVER TYPE C
(Weight= 64 lbs.)



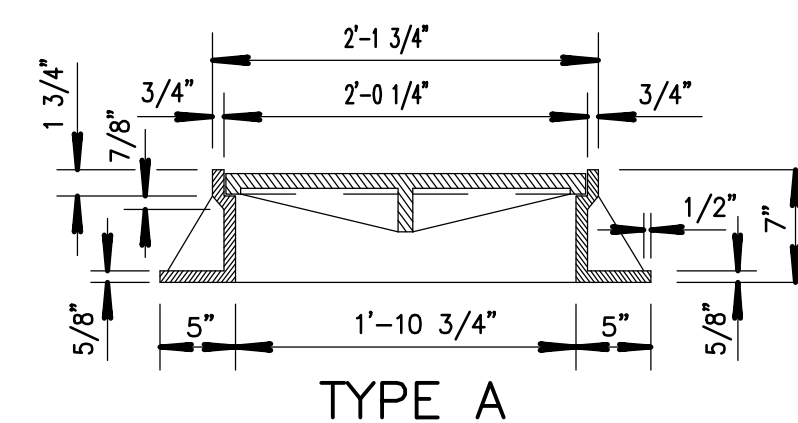
NOTE: All manhole castings are cast iron.
 Weight of castings includes no allowance for fillets and overruns.



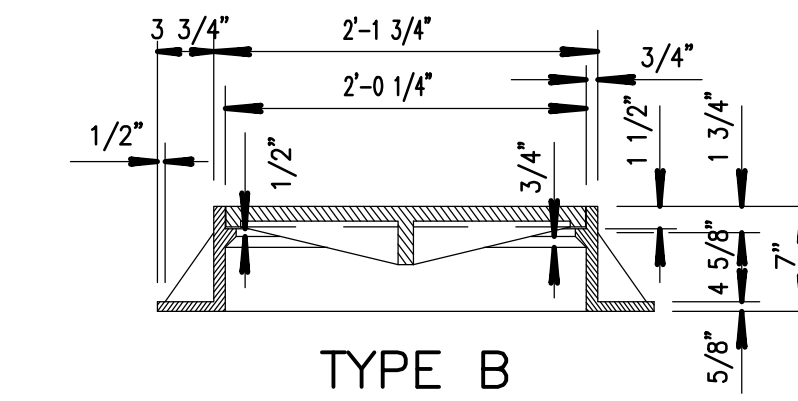
SECTION B-B (Example I)



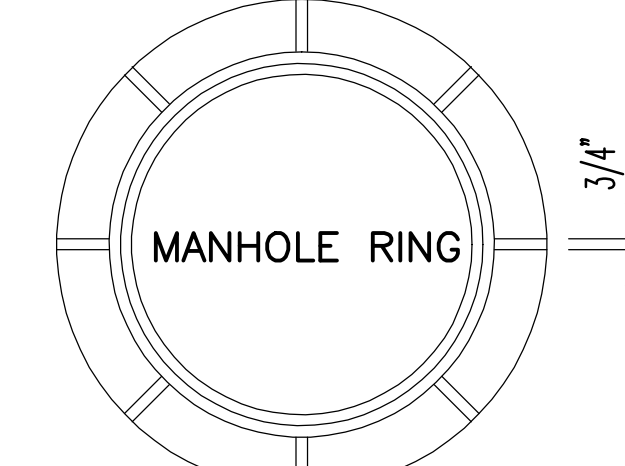
SECTION C-C (Example IV)



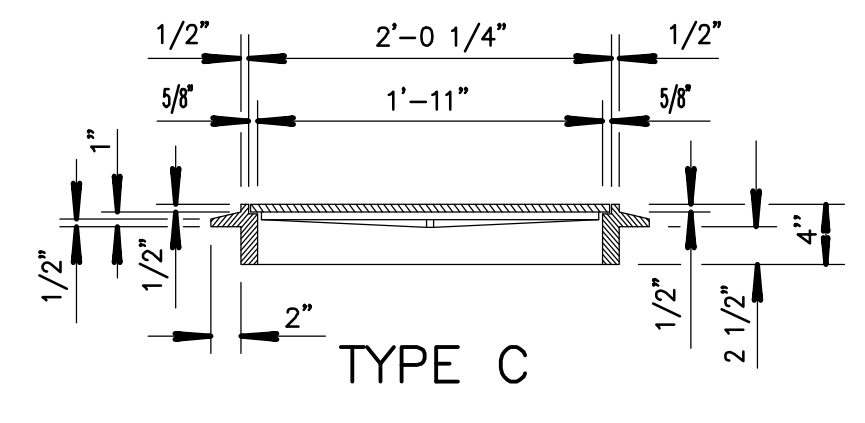
TYPE A



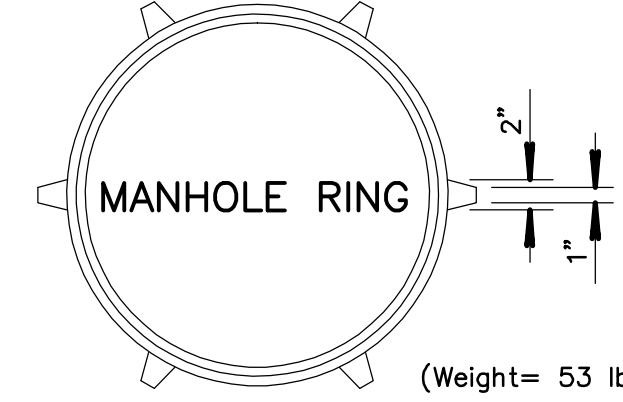
TYPE B



HEAVY TYPE MANHOLE COVER AND RING
(Type A Ring= 192 lbs., Type B Ring= 198 lbs.)

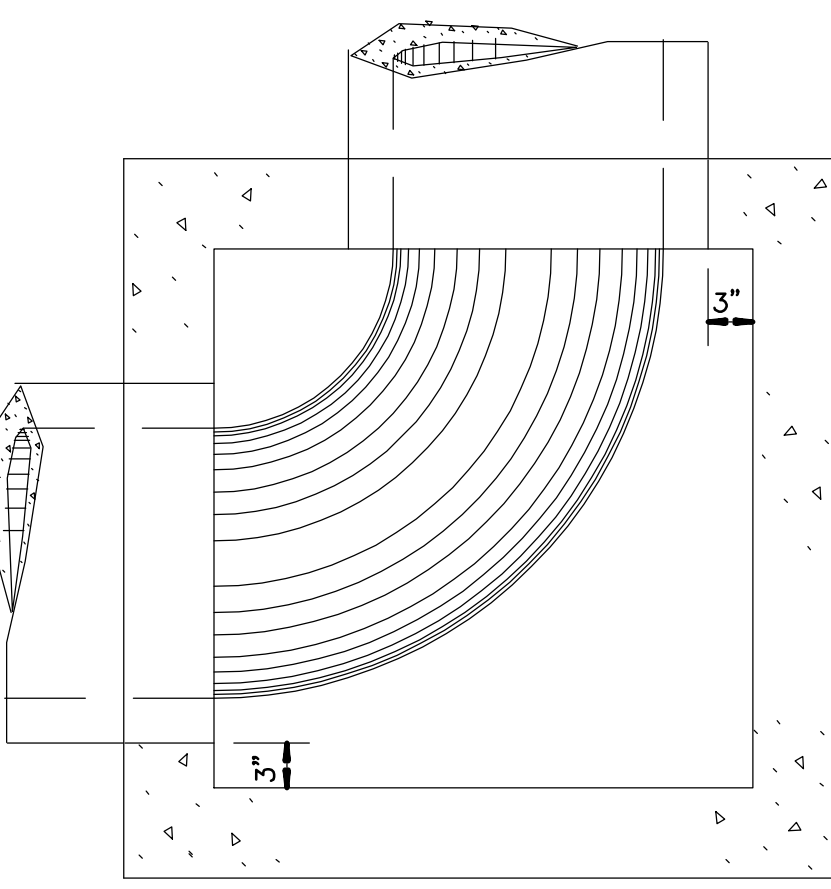


TYPE C

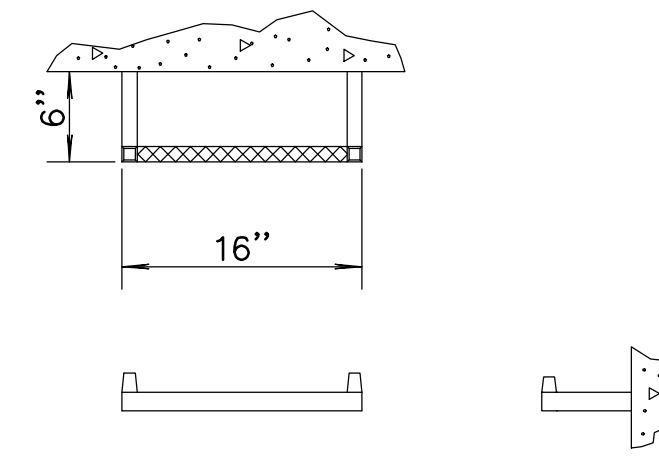


MANHOLE RING
(Weight= 53 lbs.)

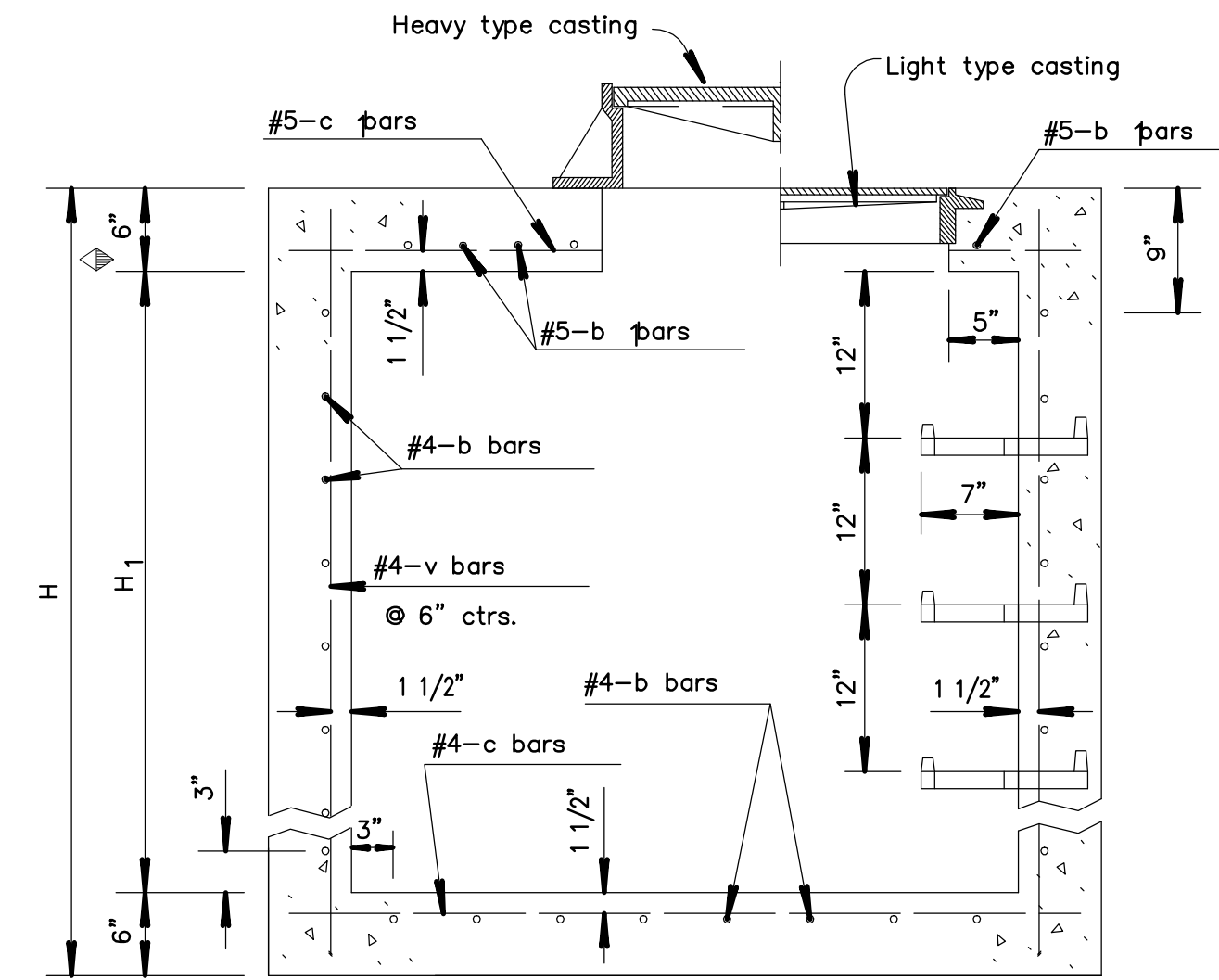
* LIGHT TYPE MANHOLE COVER & RING
 * Rings with four equally spaced lugs will be permitted.



PLAN - FLOOR (Example II)



STEP DETAILS



SECTION (Exclusive of floor shaping)

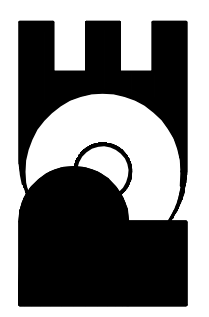
Where dimension "L" or "W" is greater than 6'-0" use 8" slab thickness.

Drawn By: USER NAMES Plotted: 11/15/2009 10:00 AM
 File: C:\Users\jonespec\Documents\472-84885\RD633.dwg

29	12-27-93	Delete paint note	R.J.S.	J.O.B.
28	1-30-92	Rev. paint&step notes, ent. on CADD	R.J.S.	J.O.B.
NO.	DATE	REVISIONS	BY	APP'D
KANSAS DEPARTMENT OF TRANSPORTATION				
REINFORCED CONCRETE MANHOLE				
RD633				
FHWA APPROVAL	2-15-94	APP'D James O. Brewer		
DESIGNED	DETAILED	QUANTITIES	TRACED	Bowser
DESIGN CK.	DETAIL CK.	QUAN.CK.	TRACE CK.	Seitz

MEDITERRANEAN PLAZA ADDITION
 STREET IMPROVEMENTS
 REINFORCED CONCRETE MANHOLE
 CITY OF WICHITA, KANSAS
 JAMES L. ARMOUR, P.E. - CITY ENGINEER
 PROJECT NO. 472-84885 OCA NO. 766250

POE & ASSOCIATES, INC.
 CONSULTING ENGINEERS
 5940 E. Central, Suite 200 • Wichita, KS 67208-0242
 Phone 316.686-4114 • FAX 316.686-4444



Engineer: T. AUSTIN
 Designer: S. SCHMIDT
 P.O. Job No.: 1949-00156
 Date: MARCH 2010