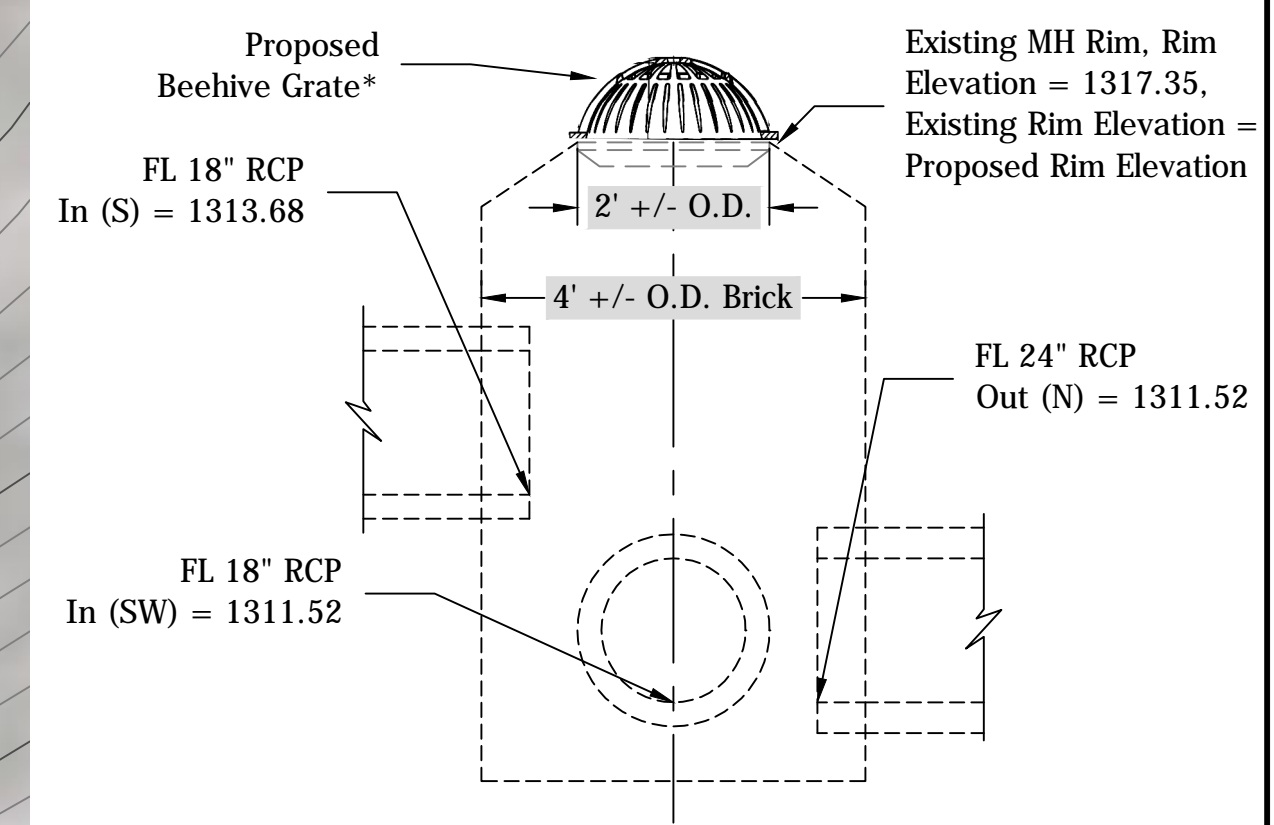
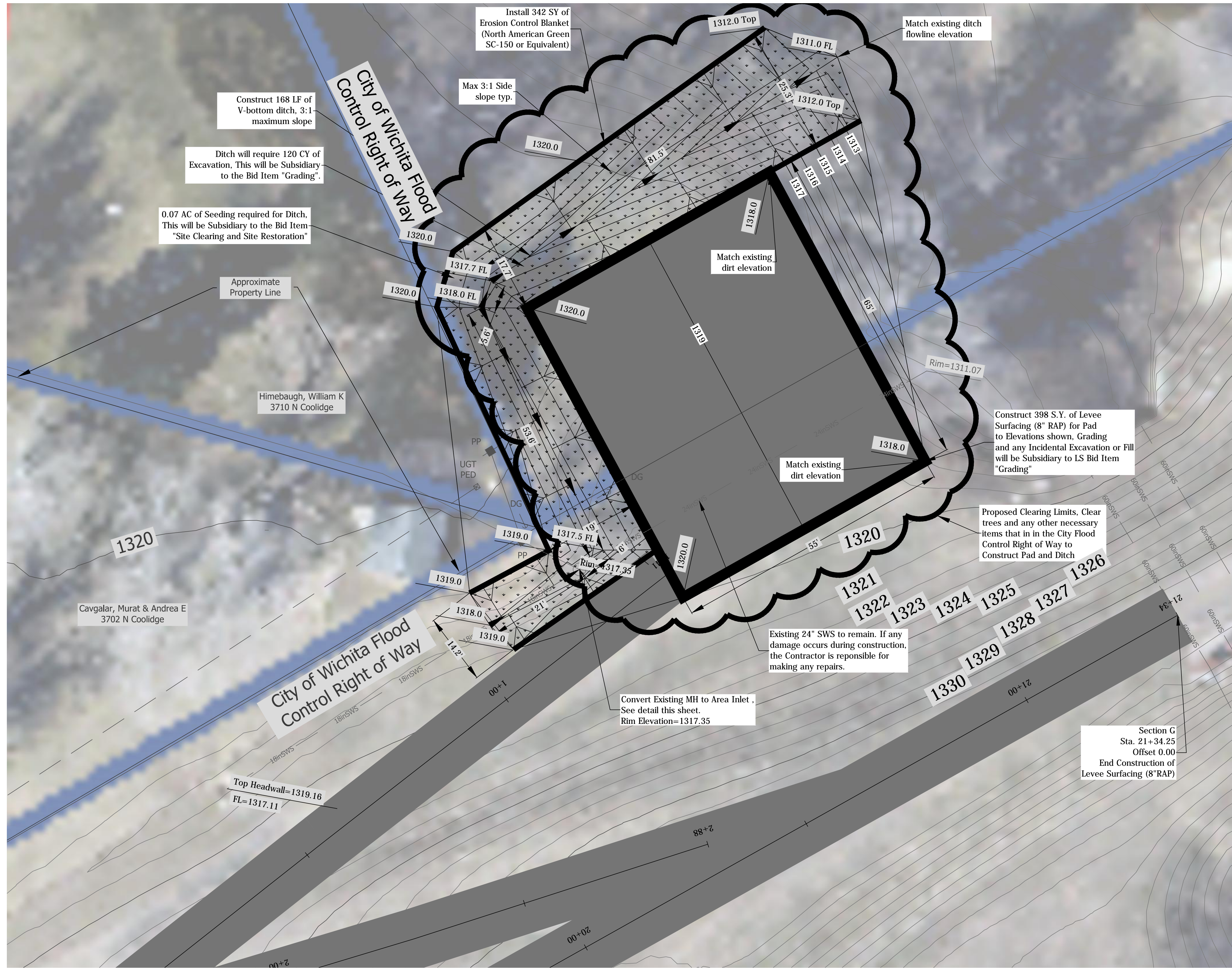
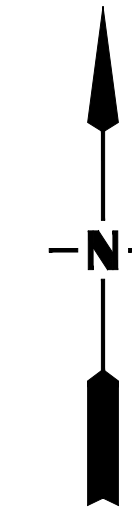
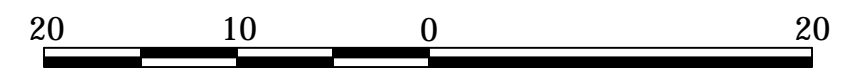


S:\Maintenance\Pump Stations\Pump Station #11\_37th & Woodrow\Mill road \_ levee\_top\Pump Station #11\_access\_road\_plans\PS\_#11\_access\_road\_plans\PS\_#11\_1:1



**Existing Brick Manhole**

\* Use East Jordan Iron Works Product Number 00120547 or approved equivalent. Contractor shall field verify the existing manhole to determine what is required to convert manhole to area inlet prior to construction.

East Jordan Iron Works:  
1-800-626-4653  
www.ejiw.com



<b>SWS IMPROVEMENTS</b>		
<b>Pump Station #11</b>		
Access Roads, Ditch & Pad		
STORM WATER ENGINEER		
Scott Lindebak, P.E.		
PROJECT #	OCA NUMBER	DATE
468-84684	660809	05/10
DESIGN	DRAWN	
TD/KSF	KSF	
STORM WATER MANAGEMENT		SHEET
CITY HALL - EIGHTH FLOOR		7 OF 11
455 NORTH MAIN STREET		
WICHITA, KANSAS 67202-1620		
(316) 268-4369		
(316) 337-9027 FAX		