

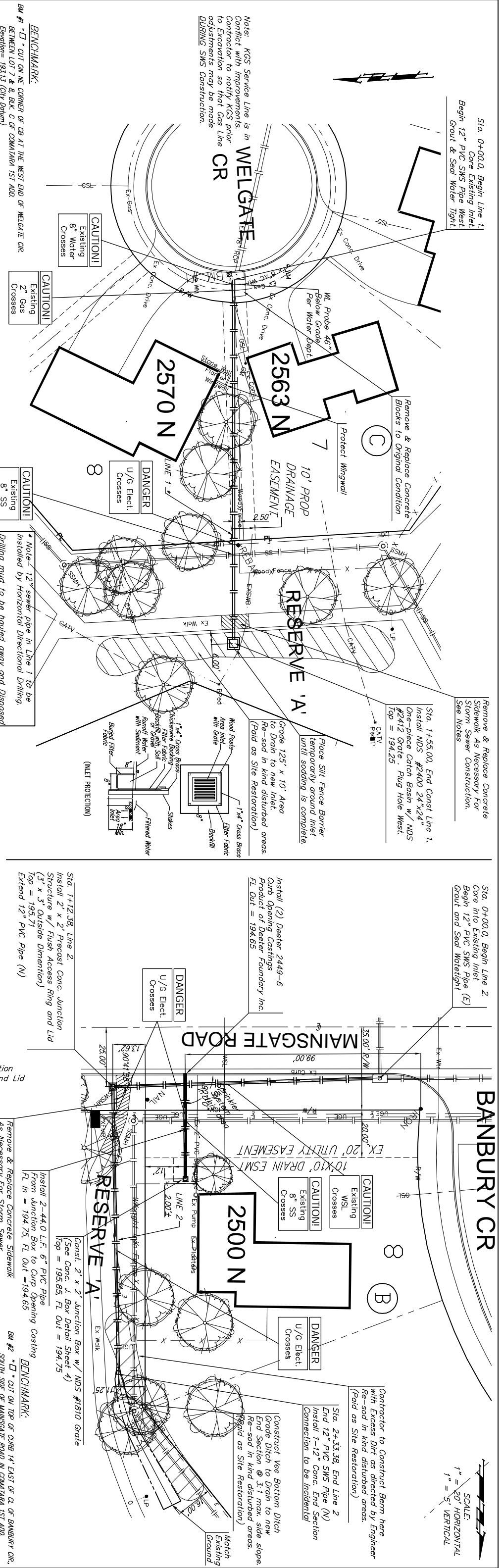
Sta. 0+00.0, Begin Line 1.
Core Existing Inlet.
Begin 12" PVC SWS Pipe West.
Grout & Seal Water Tight.

Remove & Replace Concrete
Sidewalk As Necessary For
Storm Sewer Construction.
See Notes

Sta. 0+00.0, Begin Line 2.
Core Into Existing Inlet.
Begin 12" PVC SWS Pipe (E)
Grout and Seal Watertight.

BANBURY CR

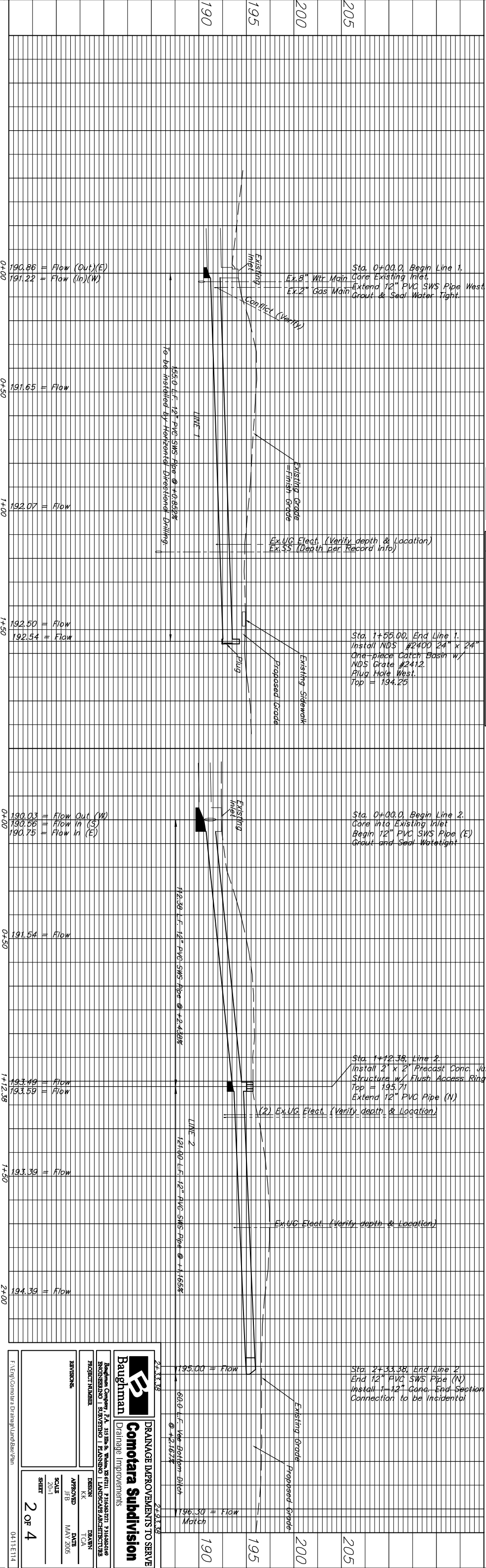
SCALE:
1" = 30' HORIZONTAL
1" = 5' VERTICAL



Note: KGS Service Line is in
WELGATE CR
Contractor to notify KGS prior
to Excavation so that Gas Line
adjustments may be made
DURING SWS Construction.

BENCHMARK:
BM #1 - "D" - CUT ON NE CORNER OF CB AT THE WEST END OF WELGATE CR
BETWEEN LOT 7 & 8, BLK. C OF COMATARA 1ST ADD.
Elevation = 193.13 (City Datum)

Note - Depth of Existing Electric Line is not Verified.



Sta. 0+00.0, Begin Line 1.
Core Existing Inlet.
Extend 12" PVC SWS Pipe West
Grout & Seal Water Tight.

Sta. 1+55.00, End Line 1.
Install NDS #2400 24" x 24"
One-piece Catch Basin w/
NDS Grate #2412.
Plug Hole West.
Top = 194.25

Sta. 0+00.0, Begin Line 2.
Core Into Existing Inlet
Begin 12" PVC SWS Pipe (E)
Grout and Seal Watertight

Sta. 1+12.38, Line 2.
Install 2' x 2' Precast Conc. Junction
Structure w/ Flush Access Ring and Lid
Top = 195.71
Extend 12" PVC Pipe (N)

Sta. 2+33.38, End Line 2.
End 12" PVC SWS Pipe (N)
Install 1-12" Conc. End Section
Connection to be Incidental

BENCHMARK:
BM #2 - "D" - CUT ON TOP OF CURB 14' EAST OF CL OF BANBURY CR,
SOUTH SIDE OF MAINSGATE ROAD IN COMATARA 1ST ADD.
Elev. = 193.82 (City Datum)

**Drainage Improvements to Serve
Comotara Subdivision**

Daughman
Engineering & Construction
1100 S. 10th St., Suite 200
Lincoln, NE 68502
Phone: (402) 441-1111
Fax: (402) 441-1112
www.daughman.com

PROJECT NUMBER: 2005-01
DATE: MAY 2005
SCALE: 3/8" = 1'-0"
SHEET: 2 OF 4

APPROVED: [Signature]
DATE: MAY 2005
SCALE: 3/8" = 1'-0"
SHEET: 2 OF 4