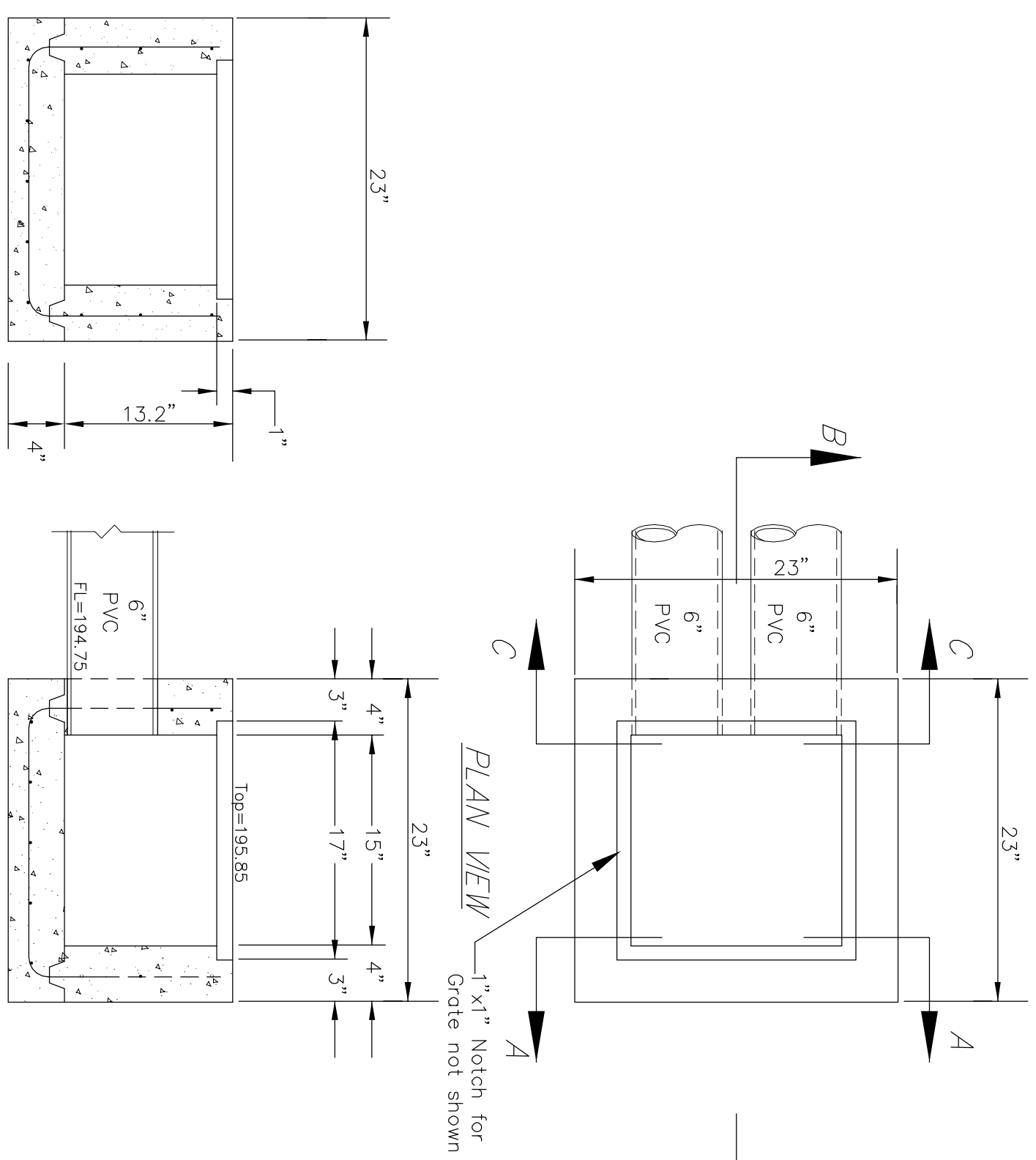


GENERAL NOTE

Use Class A Concrete throughout. All exposed edges shall be finished with an edging tool.

All bars are #4 @ 6" spacing and shall have a minimum clear-
once of 1 1/2" unless otherwise noted on the plans. Cut or bend bars
around wall openings.

Grates Not shown:
For Junction Box - NDS #1810 Grate (16 7/8"x16 7/8"x1")

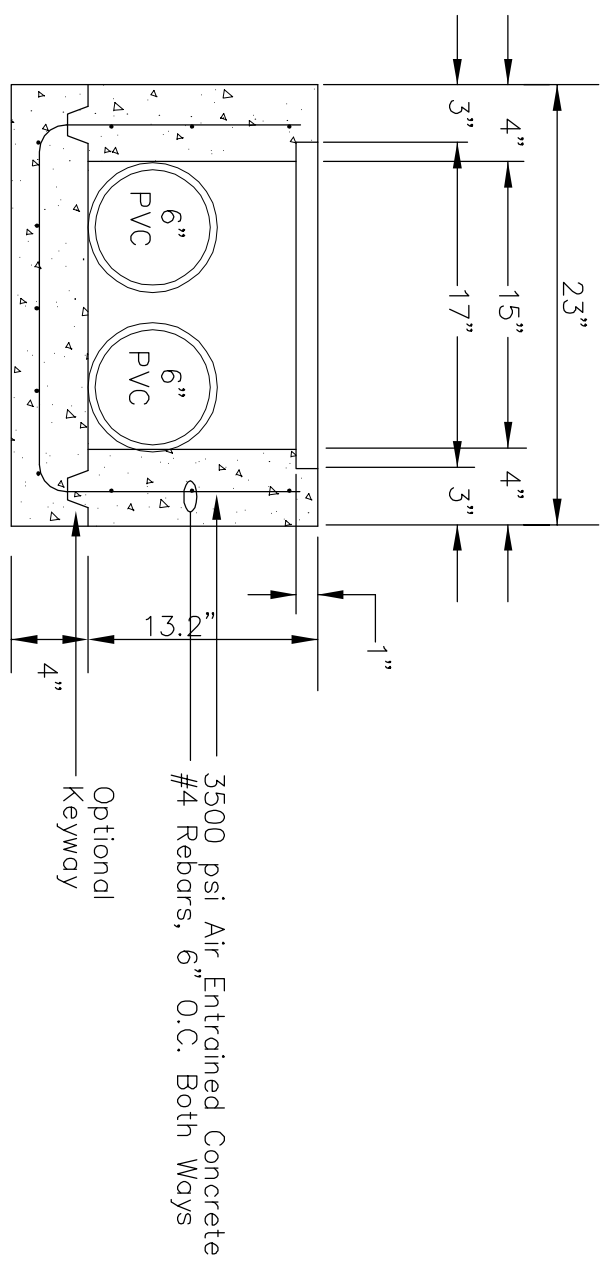


SECTION A-A

SECTION B-B

SECTION C-C

CONCRETE JUNCTION BOX DETAILS



3500 psi Air Entrained Concrete
#4 Rebars, 6" O.C. Both Ways

Optional
Keyway

Baughman
Concrete Junction Box
Area Drainage (Drain to PVC Pipe)

<p>PROJECT NUMBER 472XXXXX</p> <p>DESIGN KK</p> <p>APPROVED JFB</p> <p>SCALE 5'-1"</p> <p>SHEET 3 OF 4</p>	<p>DATE MAY 2005</p> <p>DESIGNER TCA</p> <p>SCALE 5'-1"</p> <p>SHEET 3 OF 4</p>
---	---